

3841 QUEST COURT UNITS 14 & 15 FOR SALE

Shingle Springs, CA

REDUCED PRICE!
\$749,000



TOM CONWELL 916-569-2380 tom.conwell@nmrk.com CA RE License #01394155
980 Ninth Street, #2500, Sacramento, Ca. 95814

The distributor of this communication is performing acts for which a real estate license is required. The information contained herein has been obtained from sources deemed reliable but has not been verified and no guarantee, warranty or representation, either express or implied, is made with respect to such information. Terms of sale or lease and availability are subject to change or withdrawal without notice. NMRK-NWMKTGOFFICES • 1/25

NEWMARK

3841 QUEST COURT UNITS 14 & 15

Shingle Springs, CA

PROJECT HIGHLIGHTS

- Offered at ~~\$800,000~~ \$749,000 (*must be sold together*)
- ±3,598 square foot building (per assessor)
- Part of a 15 unit industrial condo project known as Redbud Business Center
- Zoned Commercial General (CG)
- ±500 SF office/±3,098 warehouse
- 220 volts - 3 phase
- ±16' to 18' clear height
- One GL door (12'X14')
- APN# 109-510-014 & 015
- Built 2004

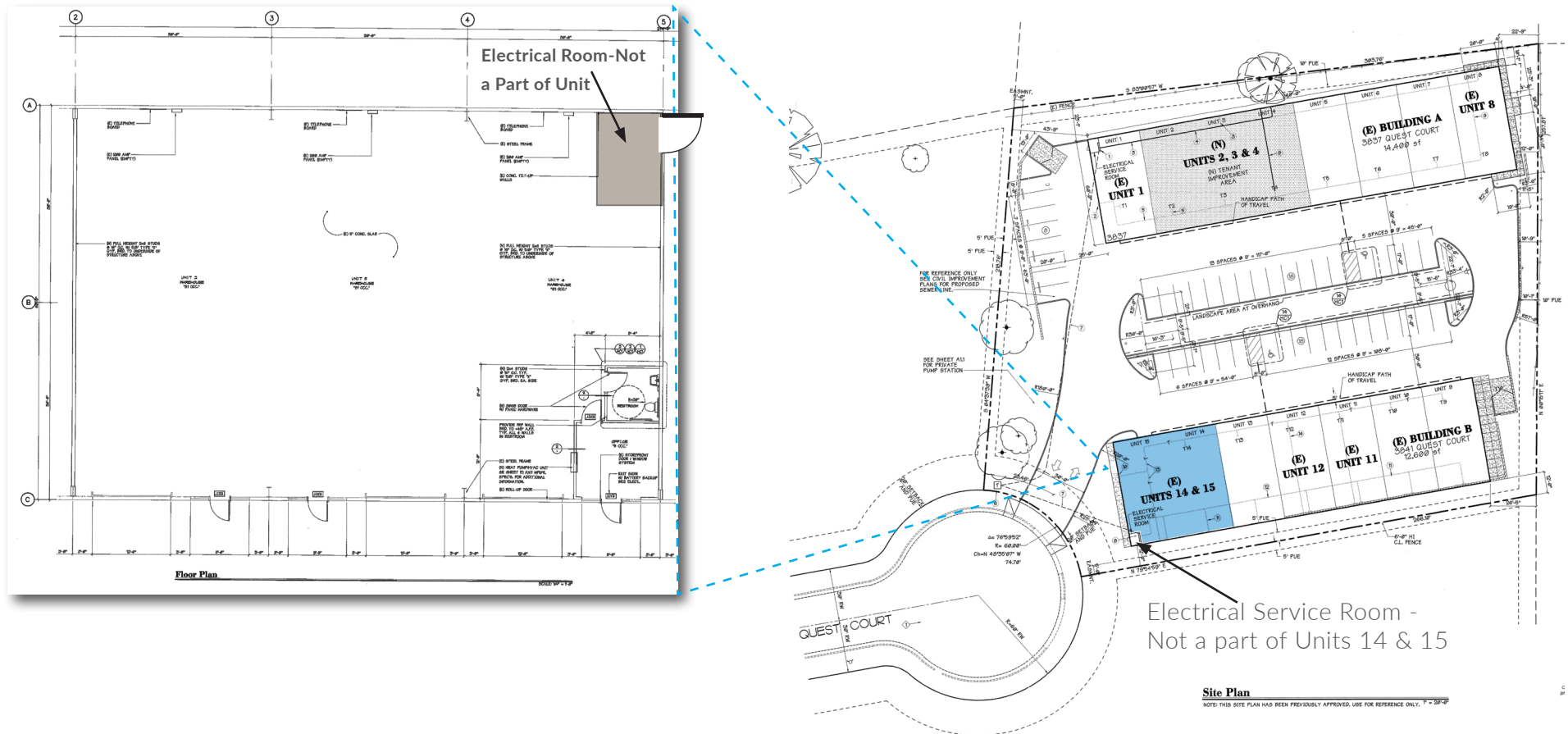
Part of an Owner's Association. Each unit pays approximately \$165 per month. The dues include exterior lighting/power, water, trash, sewer, parking lot, landscaping and a \$40 management fee.



3841 QUEST COURT UNITS 14 & 15

Shingle Springs, CA

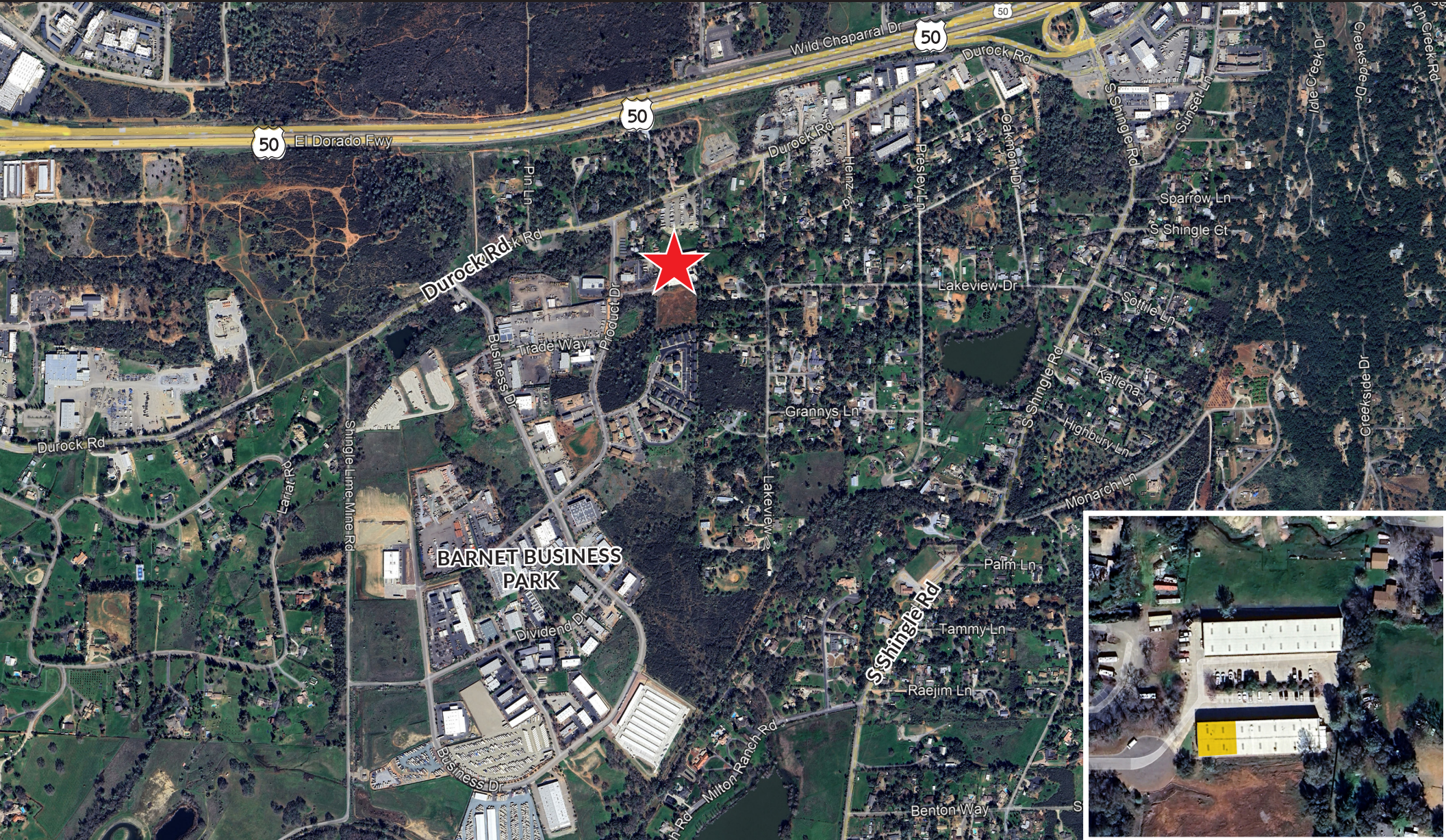
FLOOR PLAN/SITE PLAN



All images used are for illustrative purposes only and are intended to convey the concept and vision for the asset. They are for guidance only, and do not necessarily represent a true and accurate depiction of the asset. Floor plans are intended to give a general indication of the proposed layout only. All images and dimensions are not intended to form part any contract or warranty.

3841 QUEST COURT UNITS 14 & 15

Shingle Springs, CA



3841 QUEST COURT UNITS 14 & 15

Shingle Springs, CA

