



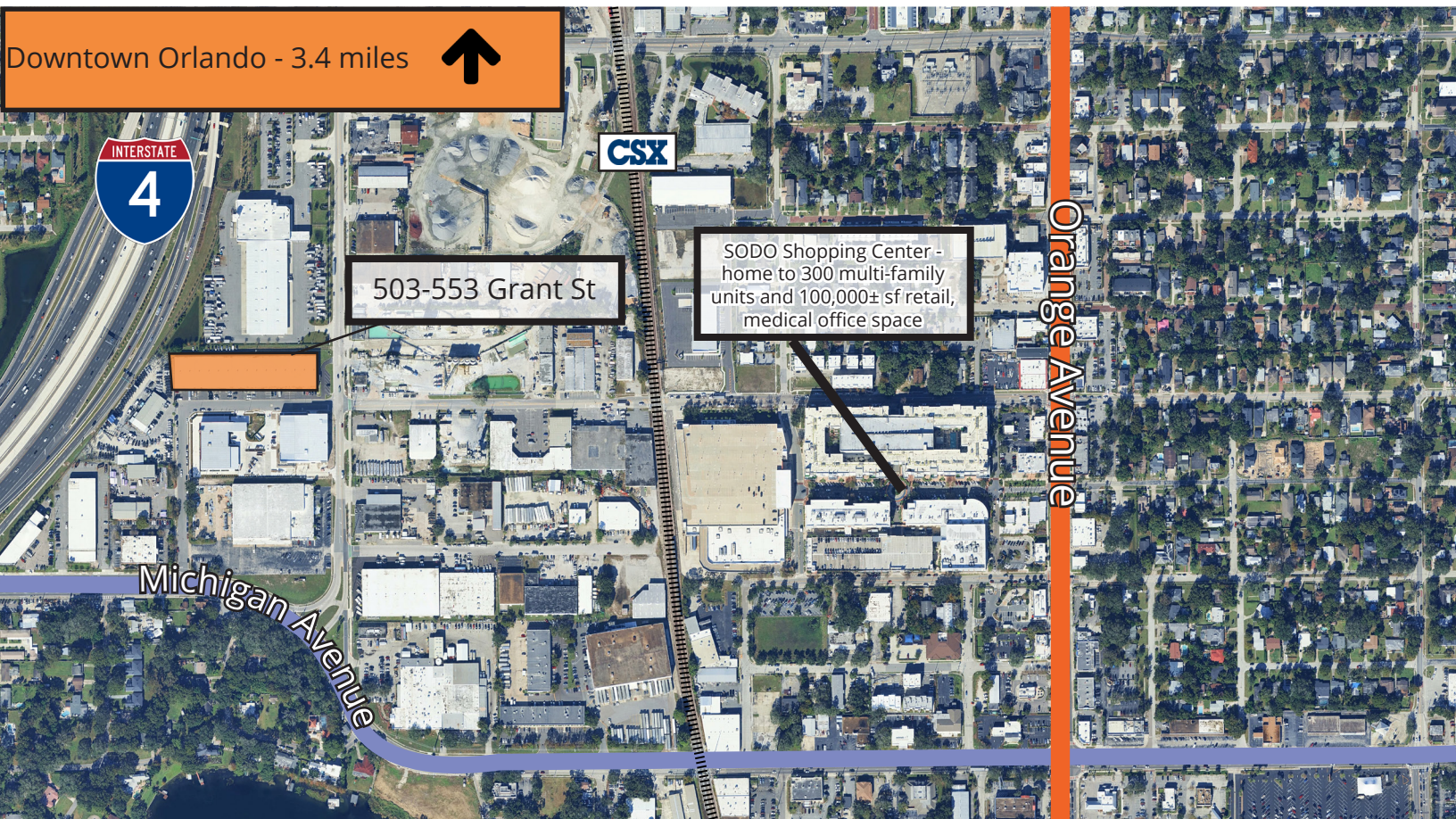
503-553 W Grant Street

- Excellent Downtown Orlando warehouses
- Grant St - 62,210±sf
- Block construction
- 18' - 20' ceiling height
- Fully sprinklered
- One front load, 10' x 10' covered dock high door
- New roof, exterior paint and parking lot
- Zoned I-G/T
- Qualifies for HUBZone SBA credits
- Easy access to Interstate 4 (I-4), State Road 408, South Orange Blossom Trail, and Orange Avenue



Lisa Bailey, SIOR, Principal
D 407 440 6645
C 407 595 9233
lisa.bailey@avisonyoung.com

135 W Central Blvd
Suite 700
Orlando, FL 32801



Demographics

Population	1 mile	3 miles	5 miles
2024 Estimated population	8,348	124,776	319,962
2029 Estimated population	8,418	128,296	328,940
Projected annual growth 2024 to 2029	0.17%	0.56%	0.55%

Business and employees	1 mile	3 miles	5 miles
2024 Total businesses	1,704	12,286	25,574
2024 Total employees	49,128	171,376	314,579
Employee / Residential Ratio (per 100 residents)	589	137	98

Data provided by ESRI

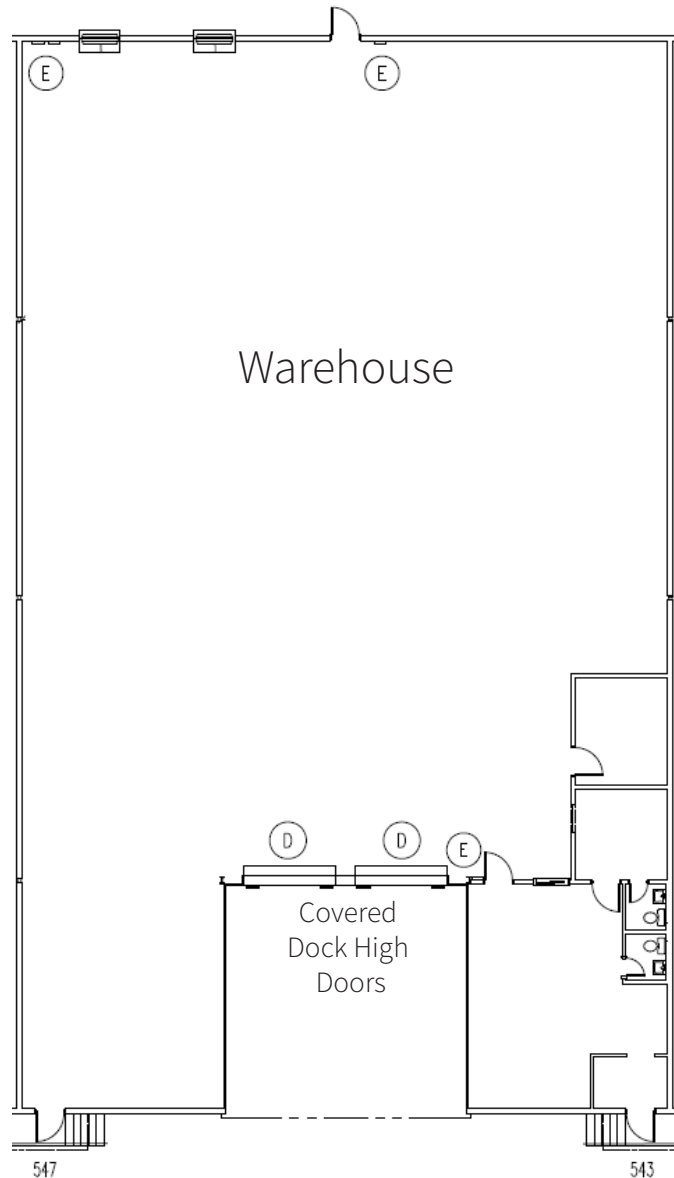
Households	1 mile	3 miles	5 miles
2024 Estimated households	8,348	124,776	319,962
2029 Estimated households	3,320	55,366	134,494
Projected household growth 2024 to 2029	-0.28%	0.80%	0.66%

Household income	1 mile	3 miles	5 miles
2024 Estimated average household income	\$129,982	\$113,024	\$112,643
2024 Estimated median household income	\$91,888	\$72,288	\$73,495

Lisa Bailey, SIOR, Principal
D 407 440 6645
C 407 595 9233
lisa.bailey@avisonyoung.com

135 W Central Blvd
Suite 700
Orlando, FL 32801

523 W Grant Street
8,268± sf



Lisa Bailey, SIOR, Principal
D 407 440 6645
C 407 595 9233
lisa.bailey@avisonyoung.com

135 W Central Blvd
Suite 700
Orlando, FL 32801