

# TURNER RIVERWALK

11820 Pierce Street, Riverside, CA 92505



Contact Broker's: **THOMAS P. PIERIK, SIOR** | Senior Vice President | 951.276.3610 | [tpierik@leeriverside.com](mailto:tpierik@leeriverside.com) | DRE 00982027  
**JOSEPH PIERIK** | Vice President | 951.276.3685 | [jpierik@leeriverside.com](mailto:jpierik@leeriverside.com) | DRE 02144961

Lee & Associates Commercial Real Estate Services, Inc. - Riverside | 4193 Flat Rock Drive, Suite 100, Riverside, CA 92505 | Corporate DRE #01048055  
All information furnished regarding property for sale, rental or financing is from sources deemed reliable, but no warranty or representation is made to the accuracy thereof and same is submitted to errors, omissions, change of price, rental or other conditions prior to sale, lease or financing or withdrawal without notice. No liability of any kind is to be imposed on the broker herein.

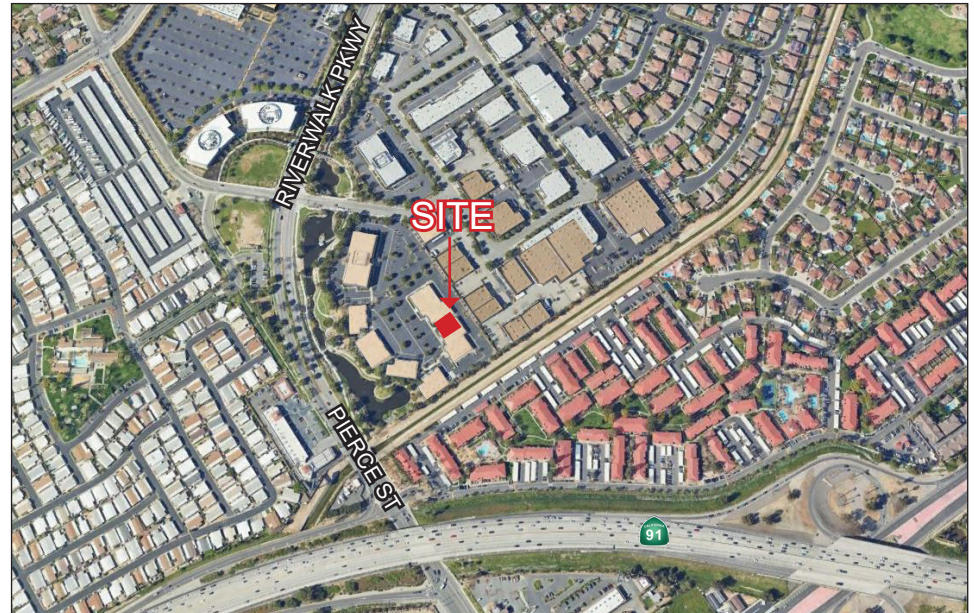
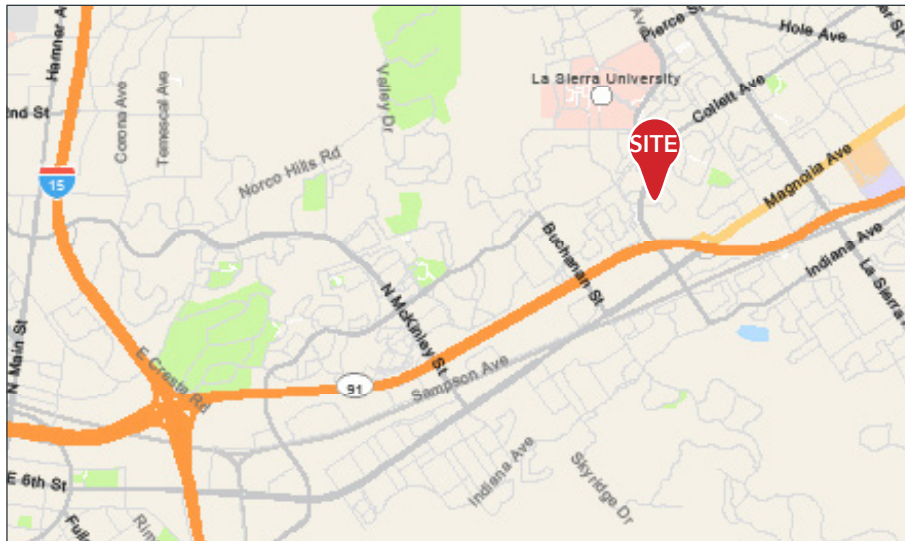
 **LEE &  
ASSOCIATES**  
COMMERCIAL REAL ESTATE SERVICES



# TURNER RIVERWALK

## PROPERTY FEATURES

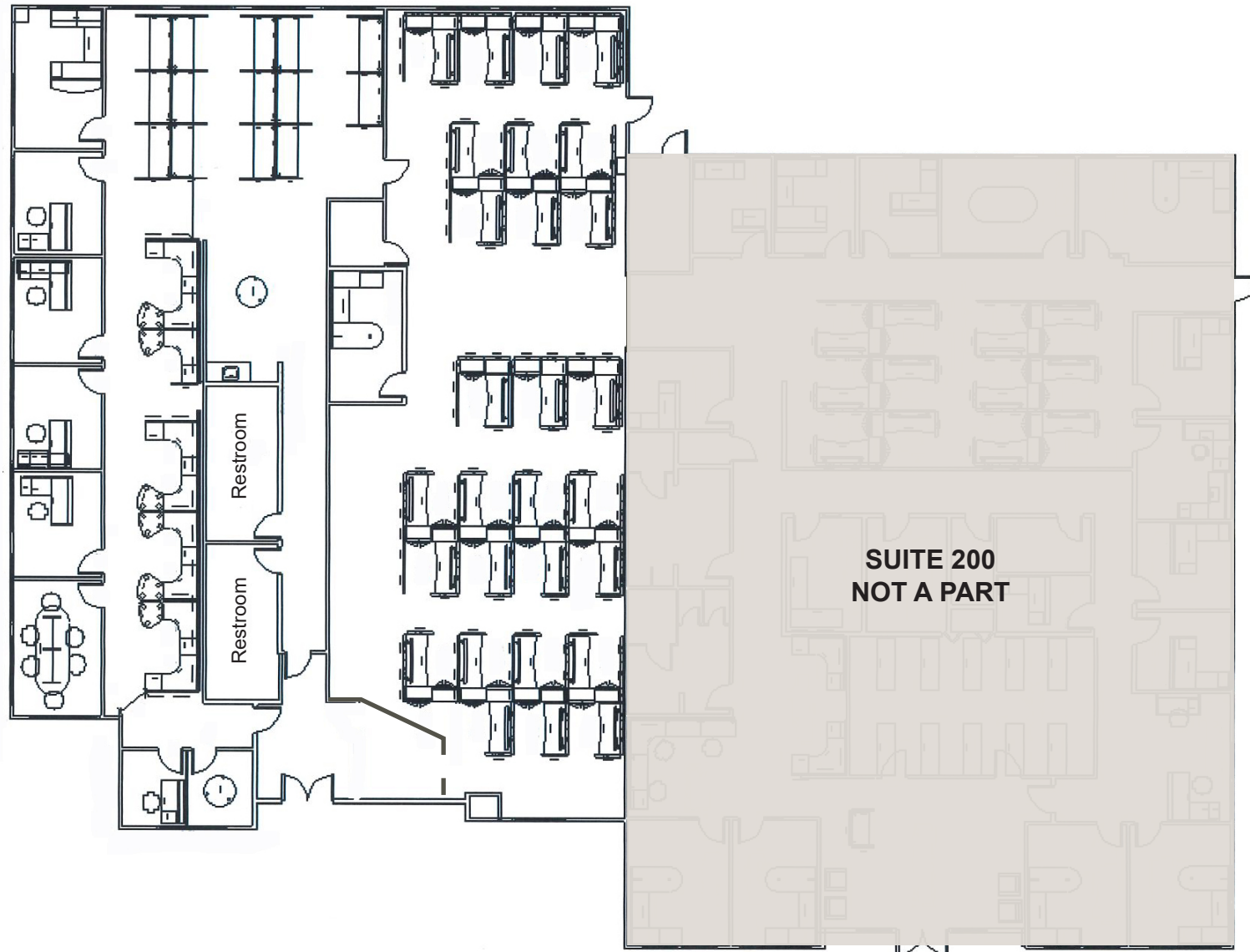
- Suite 100:  $\pm 6,812$  SF Available for Lease
- Part of a Larger  $\pm 13,360$  SF Office Condo
- Abundant Perimeter Windows
- Single Story High-Image Interior Improvements
- Campus-Like Setting in a 73-Acre Master- Planned Business Park
- Excellent Access to the 91 (Riverside) and I-15 Freeways
- Lush Landscaping Including Lakes & Streams
- 4:1 Parking Ratio
- Close Proximity to Retail Services & Restaurants



Contact Broker's: **THOMAS P. PIERIK, SIOR** | Senior Vice President | 951.276.3610 | [tpierik@leeriverside.com](mailto:tpierik@leeriverside.com) | DRE 00982027  
**JOSEPH PIERIK** | Vice President | 951.276.3685 | [jpierik@leeriverside.com](mailto:jpierik@leeriverside.com) | DRE 02144961



# FLOOR PLAN



Contact Broker's: **THOMAS P. PIERIK, SIOR** | Senior Vice President | 951.276.3610 | [tpierik@leeriverside.com](mailto:tpierik@leeriverside.com) | DRE 00982027  
**JOSEPH PIERIK** | Vice President | 951.276.3685 | [jpierik@leeriverside.com](mailto:jpierik@leeriverside.com) | DRE 02144961



# PROPERTY PHOTOS

