

For Sale

DeBary Industrial/Flex Building

12,000 SF | \$2,100,000 - Just Reduced!



Springview Industrial Park

402 Chairman Court, DeBary, Florida 32713

Property Highlights

- 12,000± SF free-standing flex/industrial building in DeBary's Springview Industrial Park
- Fully built-out with modern office and open warehouse space
- Grade-level loading with (7) 12' x 14' roll-up doors
- Clear height: 16.5' - 21' (sloped roof)
- Each unit equipped with 200-amp, 3-phase power
- Built in 2006 - well-maintained and move-in ready
- 27 parking spaces (2.25/1,000 SF ratio)
- Zoning: I-1 (Light Industrial) - allows a wide variety of business uses
- Ideal for owner/user or light manufacturing, distribution or service business
- Easy access to I-4, US Hwy 17-92 and the greater Orlando/Daytona markets
- Vacant and divisible - suitable for owner-user or investment



For more information

Stian Funk

O: 407 949 0747
sfunk@realvest.com

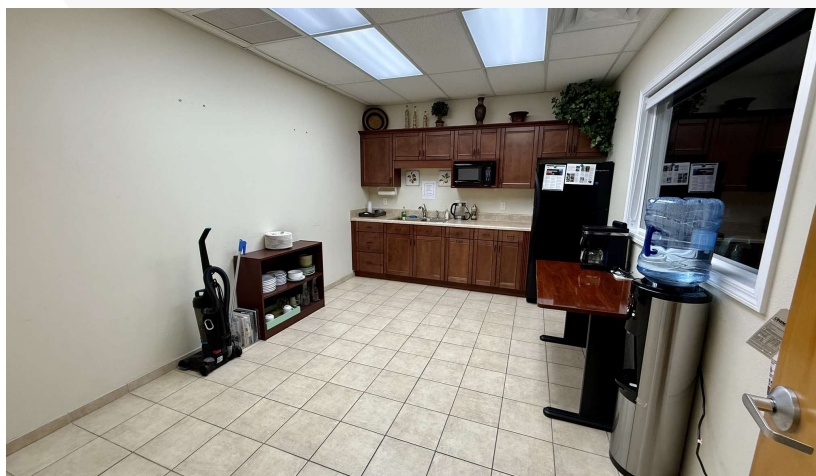
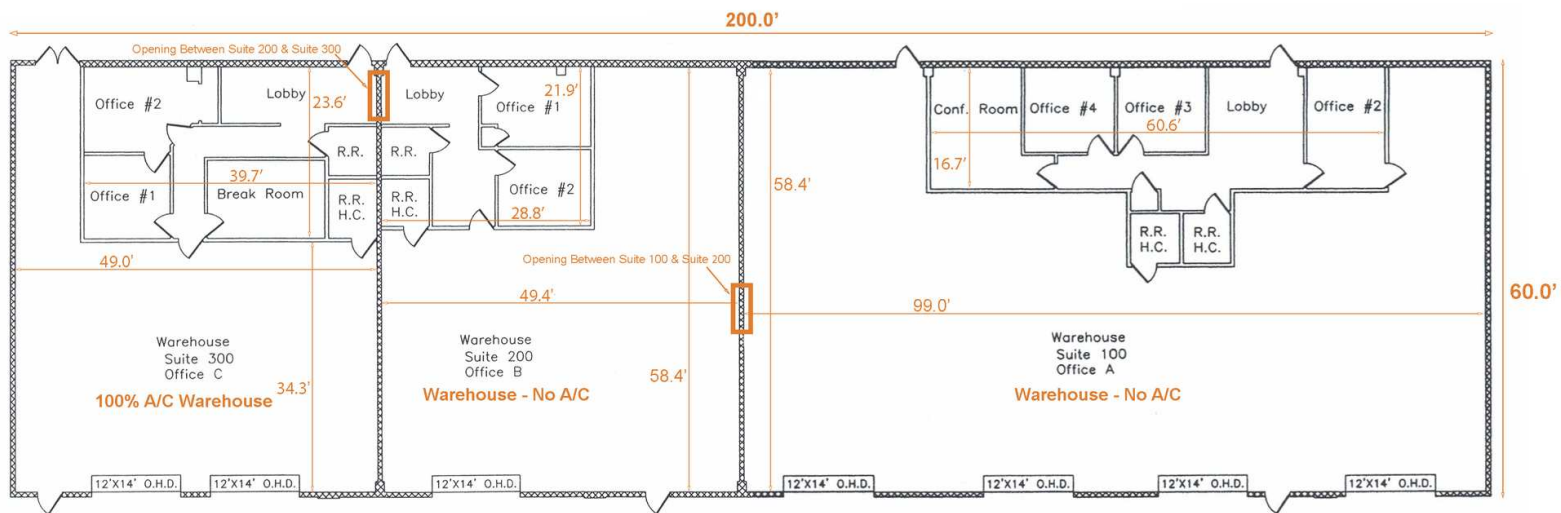
Kevin O'Connor

O: 407 949 0736
koconnor@realvest.com

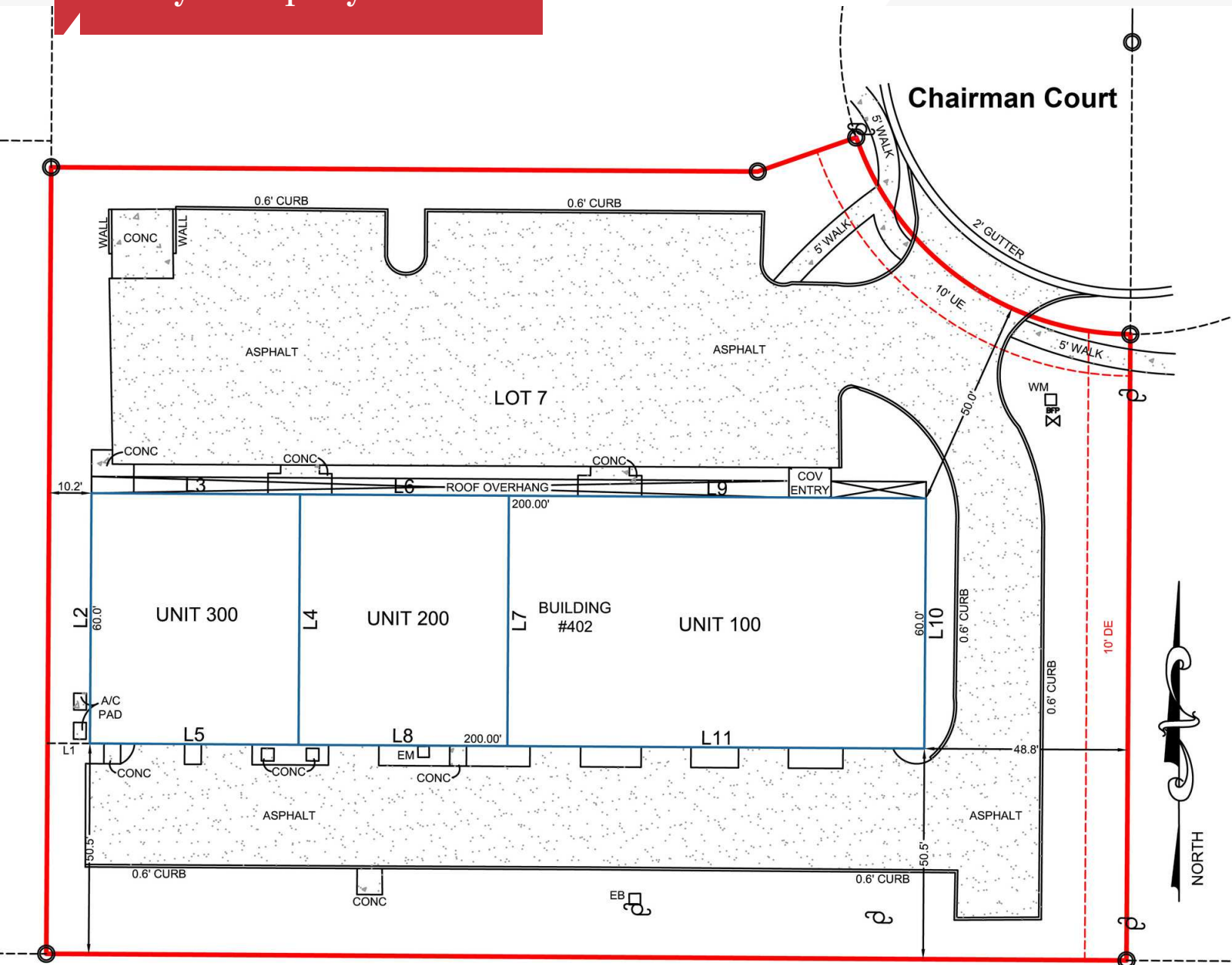
Matthew Cichocki

O: 407 949 0738
mcichocki@realvest.com

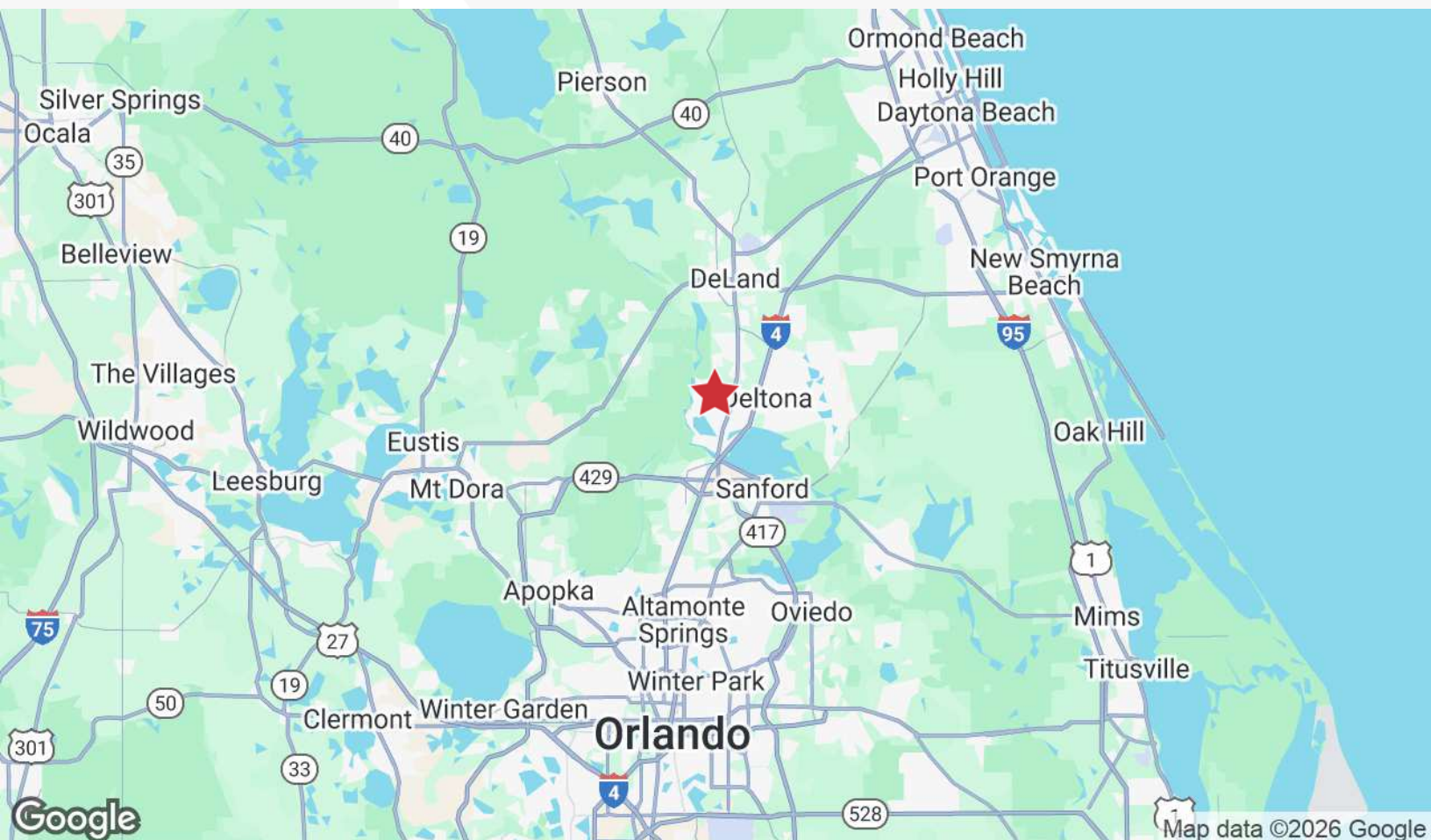
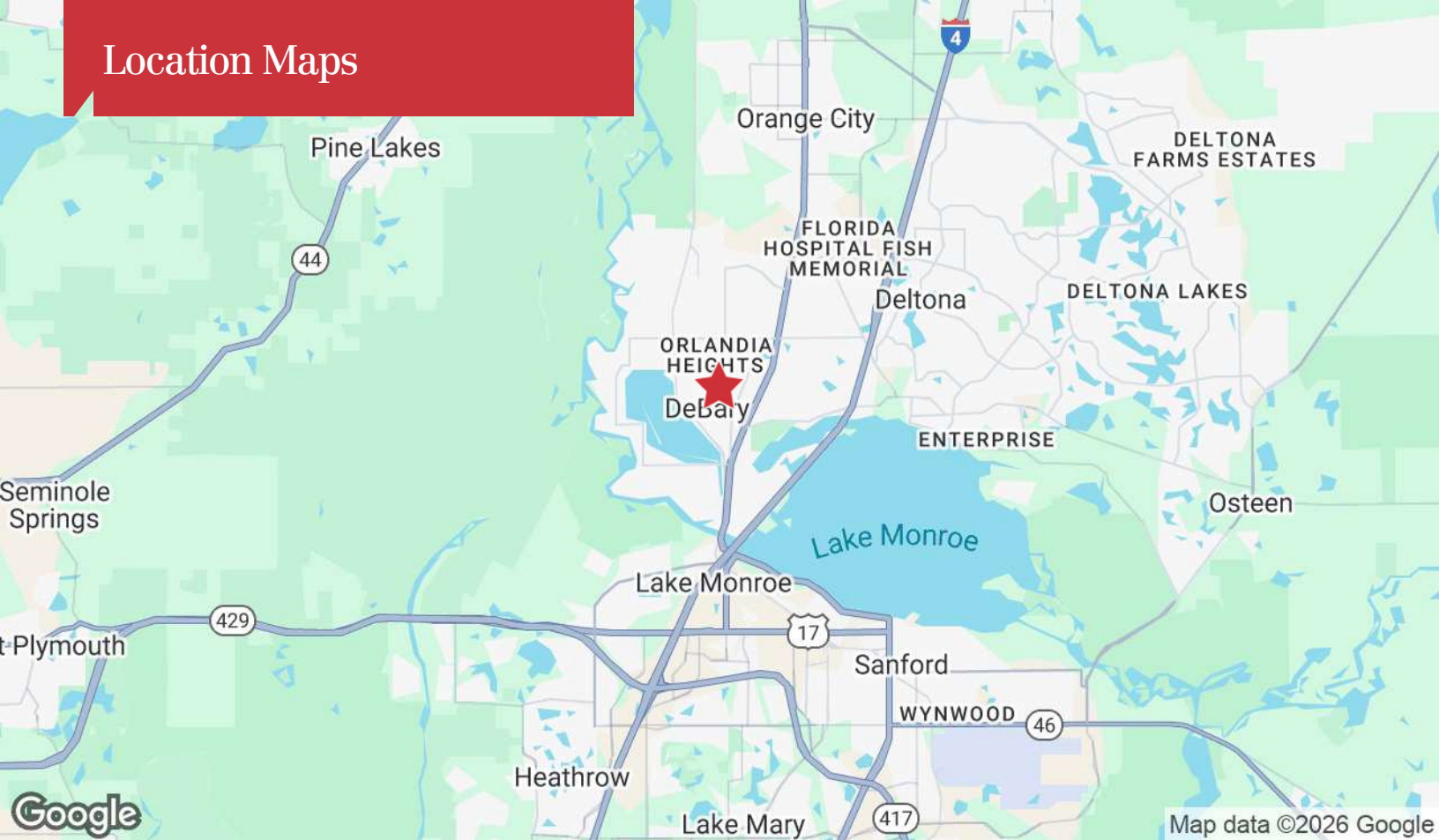
Floor Plan & Property Photos



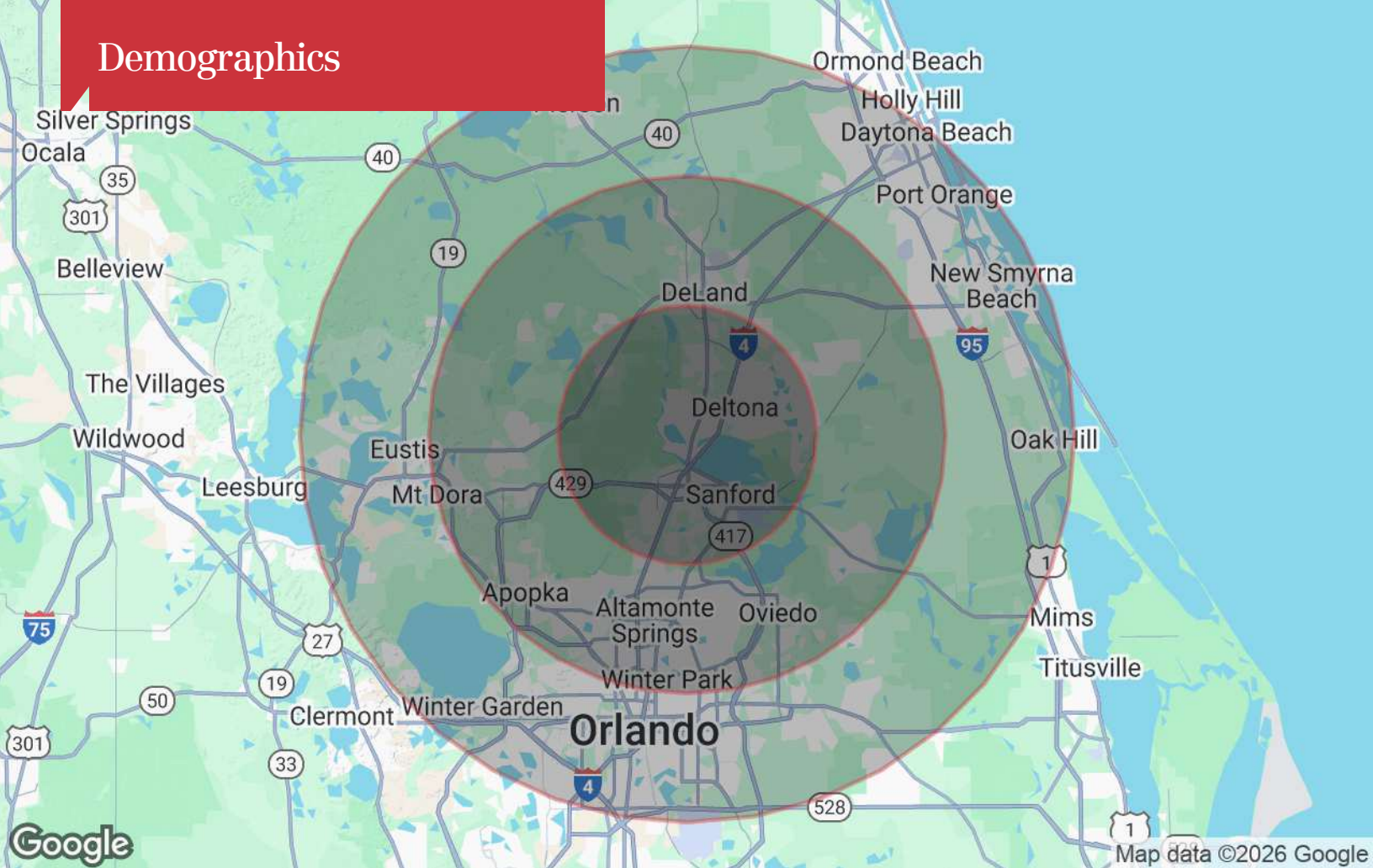
Survey & Property Photos



Location Maps



Demographics



Population	10 Miles	20 Miles	30 Miles
TOTAL POPULATION	276,819	1,033,521	2,327,517
MEDIAN AGE	42	42	41
MEDIAN AGE (MALE)	41	40	40
MEDIAN AGE (FEMALE)	43	43	42
Households & Income	10 Miles	20 Miles	30 Miles
TOTAL HOUSEHOLDS	105,820	398,251	890,751
# OF PERSONS PER HH	2.6	2.6	2.6
AVERAGE HH INCOME	\$101,109	\$103,082	\$98,716
AVERAGE HOUSE VALUE	\$362,907	\$395,908	\$382,630

* Demographic data derived from 2020 ACS - US Census