

# Professional Office Suite For Lease

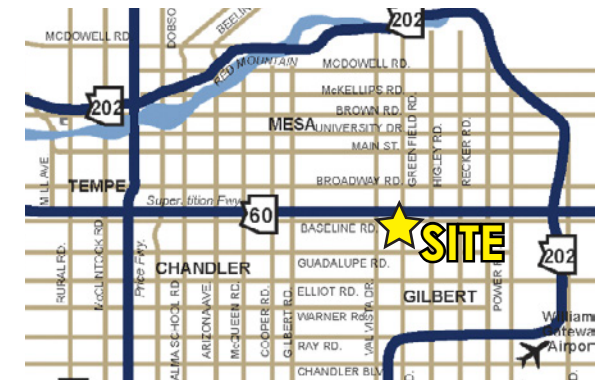
# Greenfield Business Center II

4115 E. Valley Auto Dr Mesa, Arizona



## Features

- Office Suite Available
- Fiber Optics Internet and Phone
- Baseline Road Visibility and Located Just West of Greenfield Rd
- LI Zoning, City of Mesa
- Less Than 1/2 Mile to US-60
- Close Proximity to Banner Gateway Hospital



**Tyson Breinholt**  
 D 480.966.7513  
 M 602.315.7131  
 tbreinholt@cpiaz.com

**Cliff Jenkins**  
 D 480.634.2332  
 M 480.888.6017  
 cjenkins@cpiaz.com

**Cory Breinholt**  
 D 480.889.2569  
 M 480.220.9987  
 cbreinholt@cpiaz.com



**COMMERCIAL PROPERTIES INC.**

Locally Owned. Globally Connected. CORFAC INTERNATIONAL

TEMPE: 2323 W. University Drive, Tempe, AZ 85281 | 480.966.2301  
 SCOTTSDALE: 8777 N. Gainey Center Dr., Suite 245, Scottsdale, AZ 85258 | www.cpiaz.com

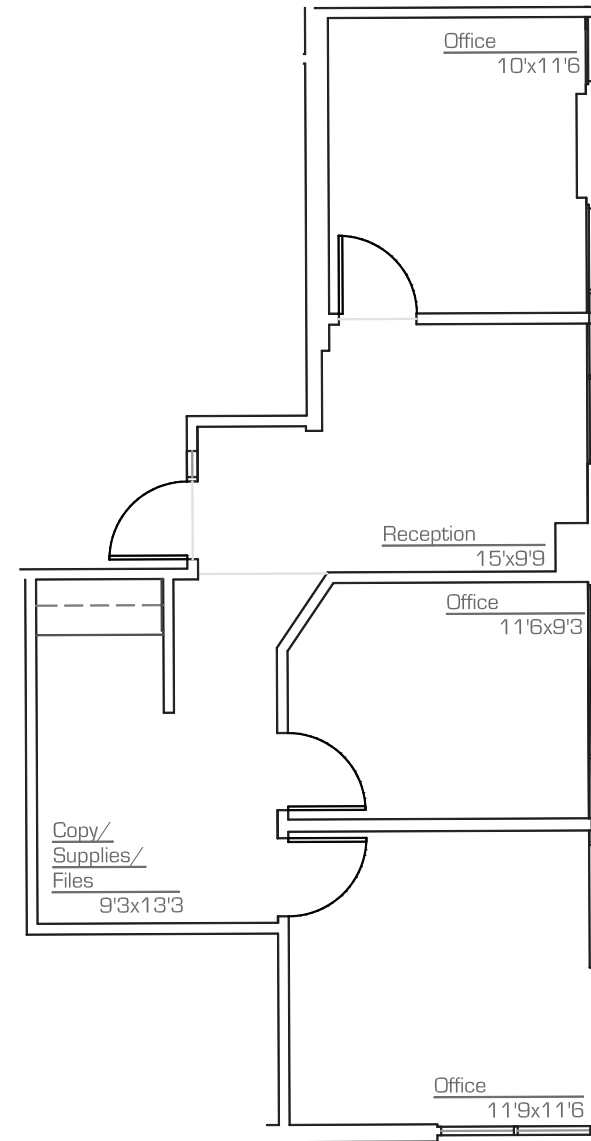
# Professional Office Suite For Lease

## Greenfield Business Center II

4115 E. Valley Auto Dr Mesa, Arizona

Suite 204 | \$22.00 PSF/YR FS  
±725 SF

- Reception
- 3 Offices
- Copy/File/Supply Room



Tyson Breinholt

D 480.966.7513

M 602.315.7131

tbreinholt@cpiaz.com

Cliff Jenkins

D 480.634.2332

M 480.888.6017

cjenkins@cpiaz.com

Cory Breinholt

D 480.889.2569

M 480.220.9987

cbreinholt@cpiaz.com



**COMMERCIAL PROPERTIES INC.**

Locally Owned. Globally Connected. CORFAC INTERNATIONAL

TEMPE: 2323 W. University Drive, Tempe, AZ 85281 | 480.966.2301  
SCOTTSDALE: 8777 N. Gainey Center Dr., Suite 245, Scottsdale, AZ 85258 | www.cpiaz.com

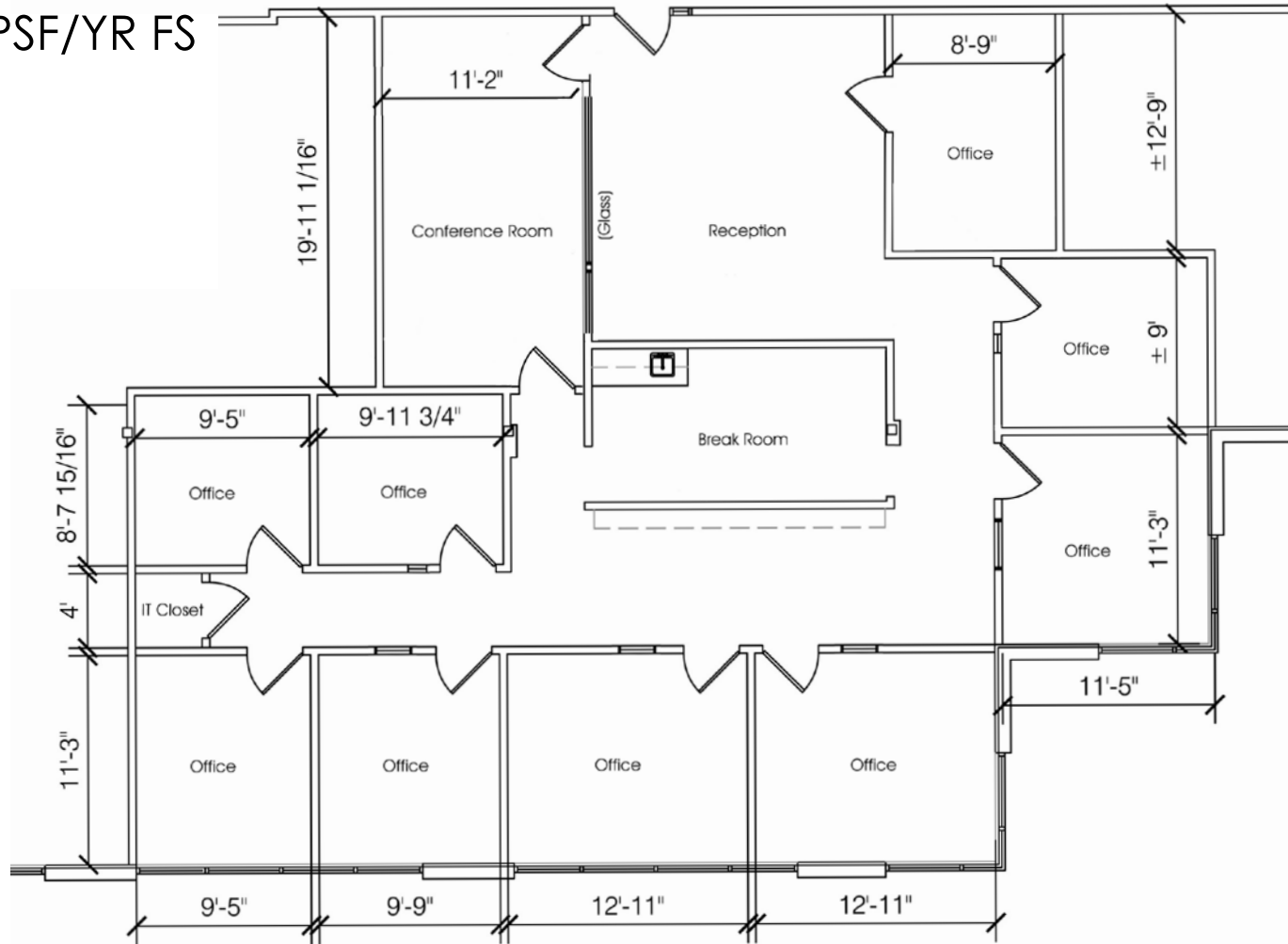
# Professional Office Suite For Lease

## Greenfield Business Center II

4115 E. Valley Auto Dr Mesa, Arizona

Suite 205 | \$22.00 PSF/YR FS  
±2,332 SF

- Reception
- Breakroom
- Conference Room
- 9 Offices



Tyson Breinholt

D 480.966.7513

M 602.315.7131

tbreinholt@cpi.az.com

Cliff Jenkins

D 480.634.2332

M 480.888.6017

cjenkins@cpi.az.com

Cory Breinholt

D 480.889.2569

M 480.220.9987

cbreinholt@cpi.az.com



**COMMERCIAL PROPERTIES INC.**

Locally Owned. Globally Connected. CORFAC INTERNATIONAL

TEMPE: 2323 W. University Drive, Tempe, AZ 85281 | 480.966.2301  
SCOTTSDALE: 8777 N. Gainey Center Dr., Suite 245, Scottsdale, AZ 85258 | www.cpi.az.com

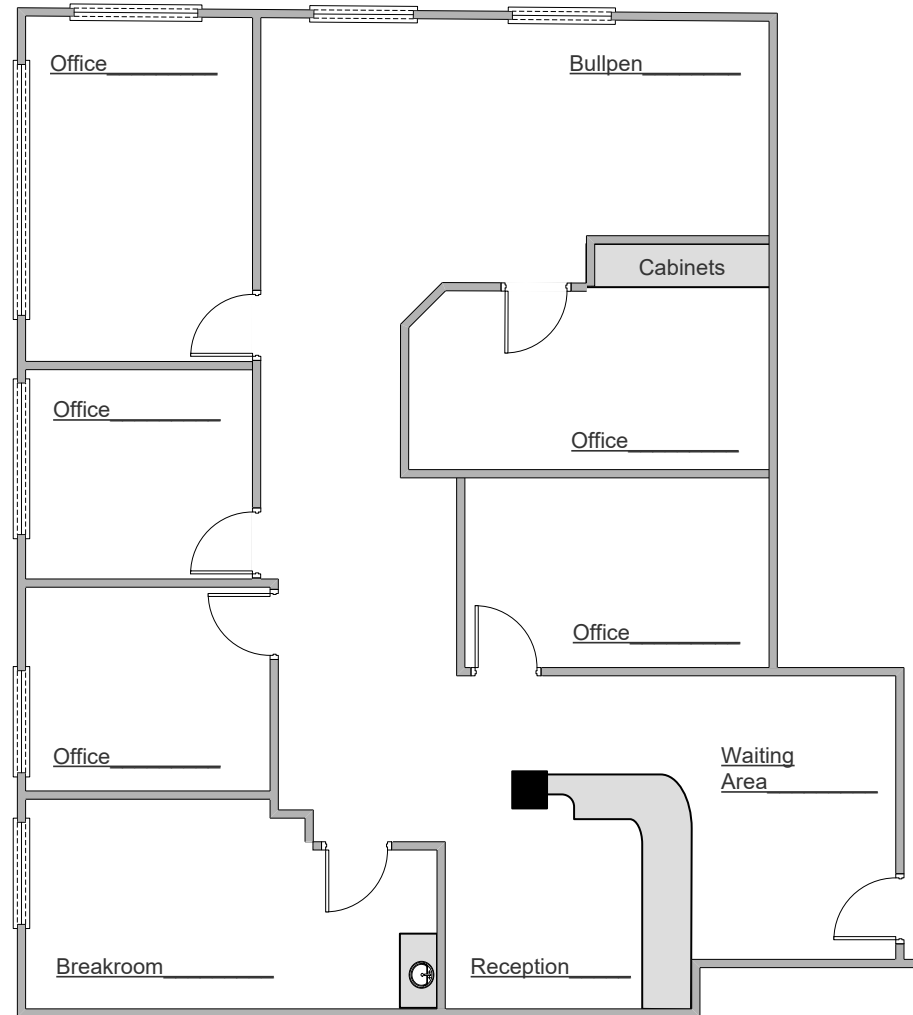
# Professional Office Suite For Lease

## Greenfield Business Center II

4115 E. Valley Auto Dr Mesa, Arizona

Suite 208 | \$22.00 PSF/YR FS  
±1,793 SF

- Reception
- Breakroom
- Bull Pen
- 5 Offices



Tyson Breinholt

D 480.966.7513

M 602.315.7131

tbreinholt@cpi.az.com

Cliff Jenkins

D 480.634.2332

M 480.888.6017

cjenkins@cpi.az.com

Cory Breinholt

D 480.889.2569

M 480.220.9987

cbreinholt@cpi.az.com



**COMMERCIAL PROPERTIES INC.**

Locally Owned. Globally Connected. CORFAC INTERNATIONAL

TEMPE: 2323 W. University Drive, Tempe, AZ 85281 | 480.966.2301  
SCOTTSDALE: 8777 N. Gainey Center Dr., Suite 245, Scottsdale, AZ 85258 | www.cpi.az.com

Professional Office Suite For Lease  
**Greenfield Business Center II**  
 4115 E. Valley Auto Dr Mesa, Arizona



Tyson Breinholt  
 D 480.966.7513  
 M 602.315.7131  
 tbreinholt@cpiaz.com

Cliff Jenkins  
 D 480.634.2332  
 M 480.888.6017  
 cjenkins@cpiaz.com

Cory Breinholt  
 D 480.889.2569  
 M 480.220.9987  
 cbreinholt@cpiaz.com

 **COMMERCIAL PROPERTIES INC.**  
 Locally Owned. Globally Connected. CORFAC INTERNATIONAL  
 TEMPE: 2323 W. University Drive, Tempe, AZ 85281 | 480.966.2301  
 SCOTTSDALE: 8777 N. Gainey Center Dr., Suite 245, Scottsdale, AZ 85258 | www.cpiaz.com

The information contained herein has been obtained from various sources. We have no reason to doubt its accuracy; however, J & J Commercial Properties, Inc. has not verified such information and makes no guarantee, warranty or representation about such information. The prospective buyer or lessee should independently verify all dimensions, specifications, floor plans, and all information prior to the lease or purchase of the property. All offerings are subject to price change, prior sale, lease, or withdrawal from the market without prior notice. Effective 02.02.24