

PLEASANT CROSSING COMMONS

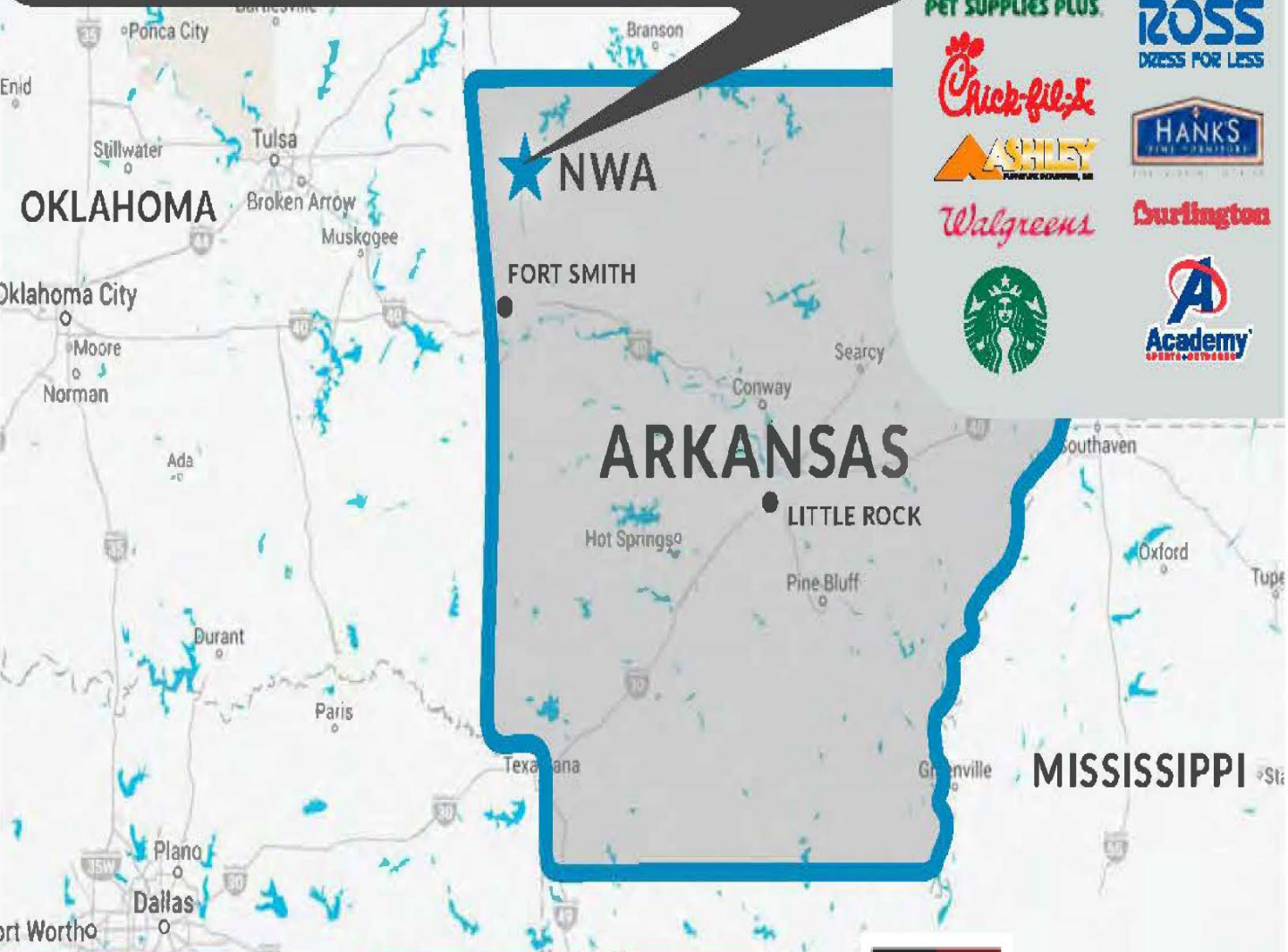
▶ PLEASANT CROSSING RD & I-49 | ROGERS ARKANSAS



+ HIGHLIGHTS

- ▶ NWA is home to the world headquarters of Wal-Mart, Tyson Foods, J.B Hunt Transport, Sam's Club, Daisy BB Guns, and many other multi-national corporation's regional Retailers.
- ▶ One of the fastest growing MSA's in the nation.
- ▶ High volume Walmart Supercenter

+ COME JOIN



2024 DEMOS	3 MI	5 MI	10 MI	MSA
POPULATION	44,929	106,108	296,884	601,399
AVE HH INCOME	\$126,630	\$120,325	\$115,881	\$105,335
HOUSEHOLDS	15,794	37,612	104,670	223,658



A
SITTON GROUP
DEVELOPMENT

LOCAL MAP

▶ PLEASANT CROSSING RD & I-49 | ROGERS ARKANSAS



1



2



3



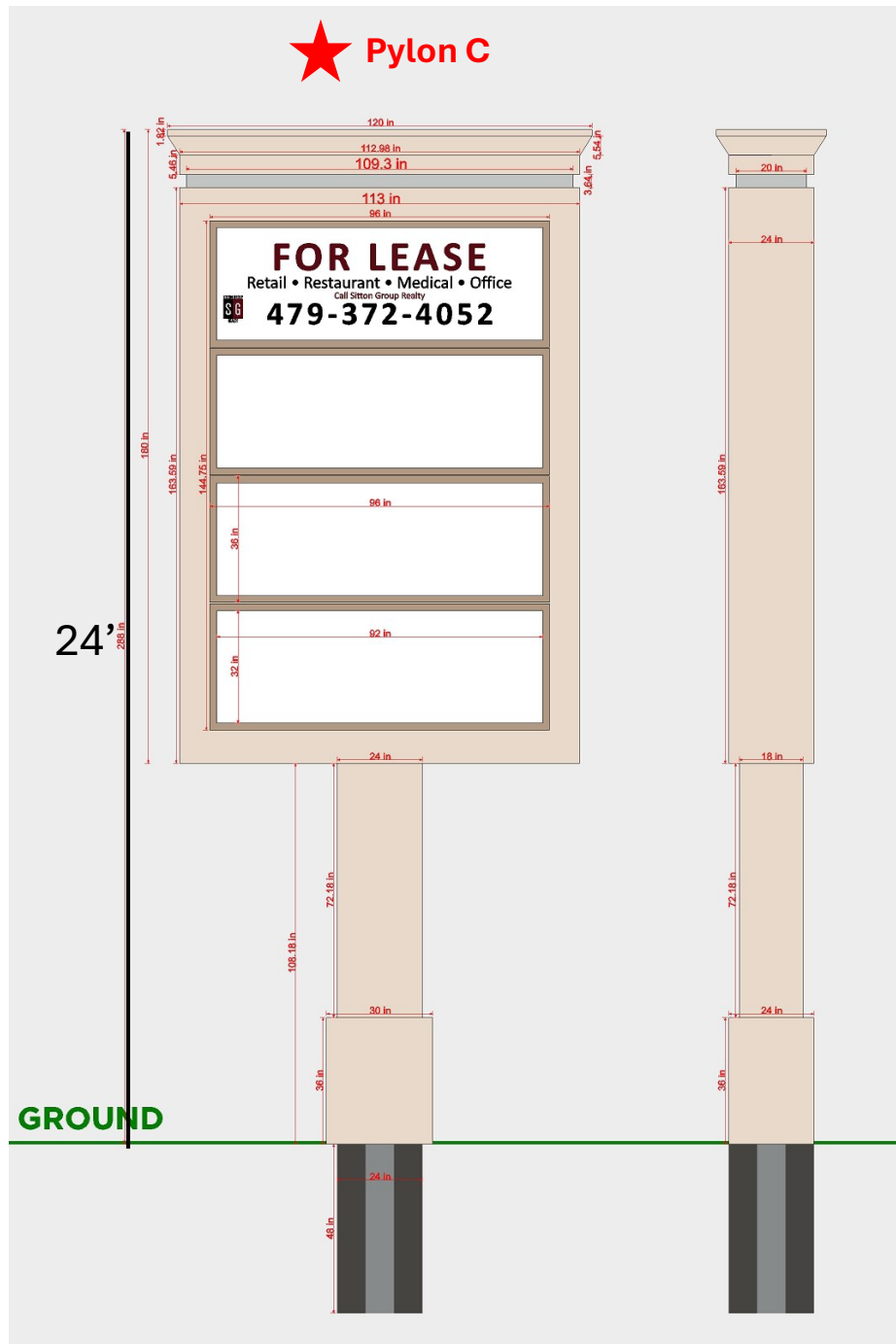
2024 DEMOS	3 MI	5 MI	10 MI	MSA
POPULATION	44,929	106,108	296,884	601,399
AVE HH INCOME	\$126,630	\$120,325	\$115,881	\$105,335
HOUSEHOLDS	15,794	37,612	104,670	223,658

+ JOIN ONE OF THE FASTEST GROWING AREAS IN ARKANSAS

- 1 SCOTTSDALE CENTER
- 2 PINNACLE HILLS PROMENADE

3 PLEASANT CROSSING COMMONS





© 2014 Sitron Group Realty, Inc. All rights reserved. This is a conceptual rendering of the proposed development. Sitron Group Realty, Inc. is not responsible for the accuracy of the information presented herein.

ADDRESSES: S PLEASANT CROSSING BLVD
ZONED: C2-CU



**New Shops
Coming
2025
7,650 sf**

**WOODSPRING
SUITES**
AN EXTENDED STAY HOTEL

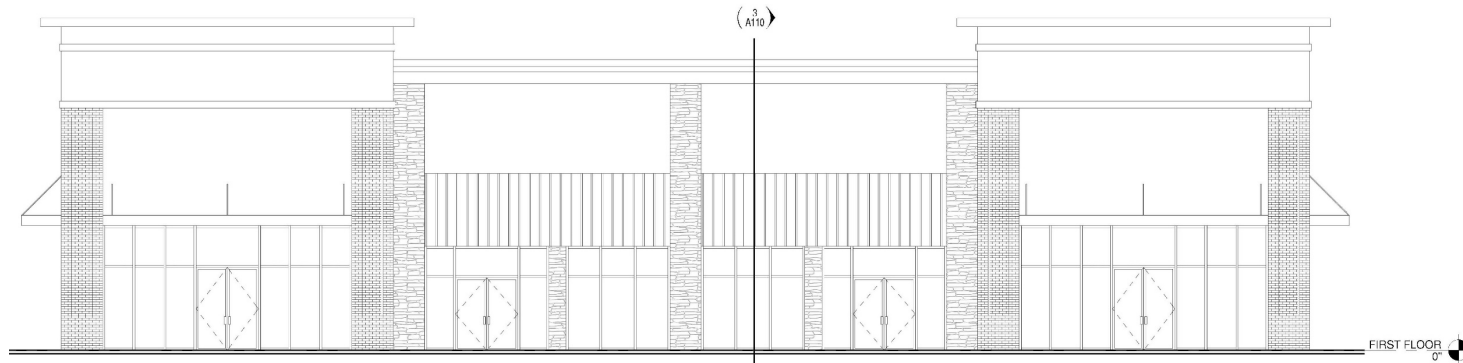
NEW BUILDING
FFE: 1313.00
120.33'X64.33'
4311 S PLEASANT
CROSSING BLVD,
ROGERS, AR

Everest 
REHABILITATION
HOSPITALS, LLC.

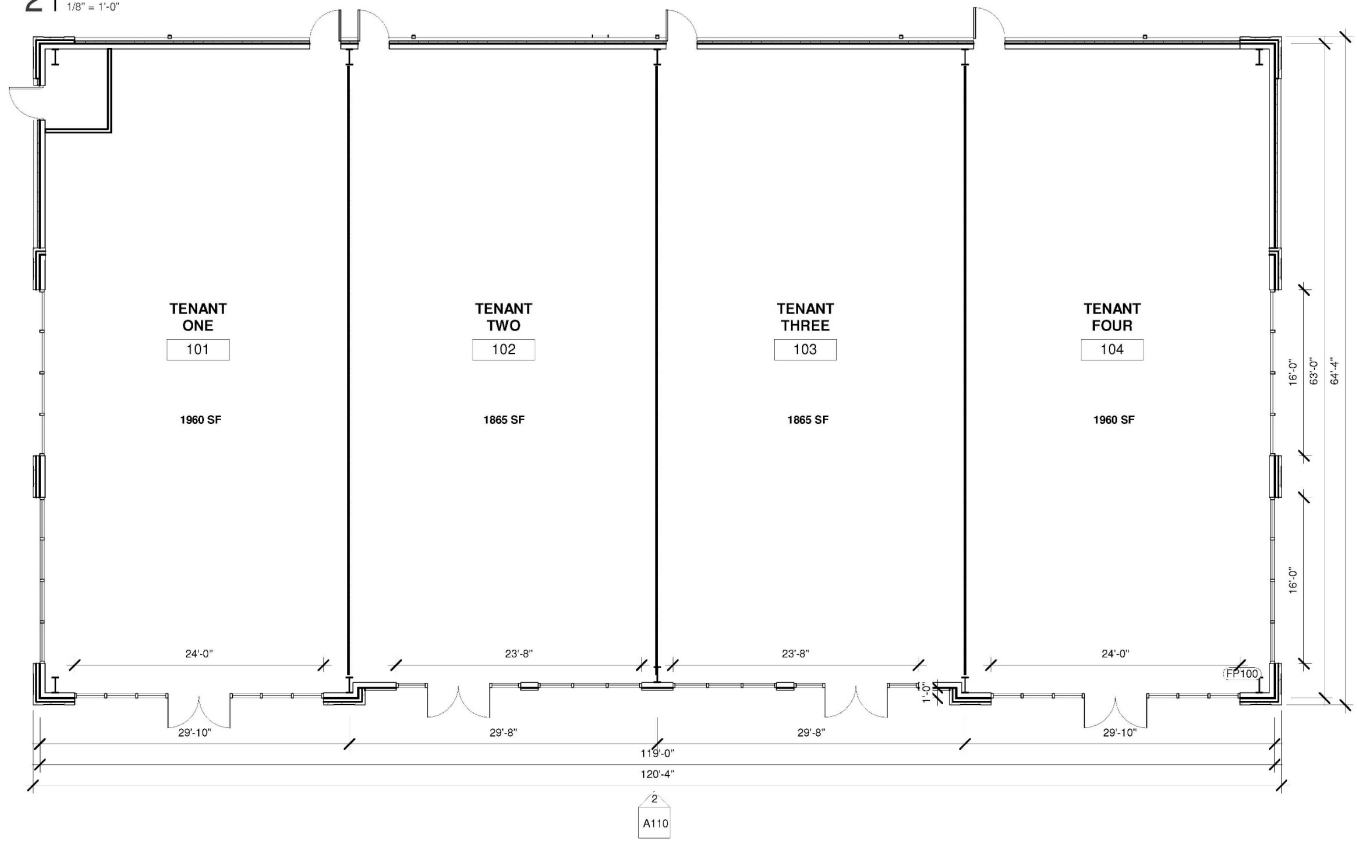
24' Pylon

S PLEASANT CROSSING BLVD

PARCEL #02-18152-000



2 SOUTH ELEVATION
1/8" = 1'-0"



7650 SF

1 FIRST FLOOR PLAN
1/8" = 1'-0"

