

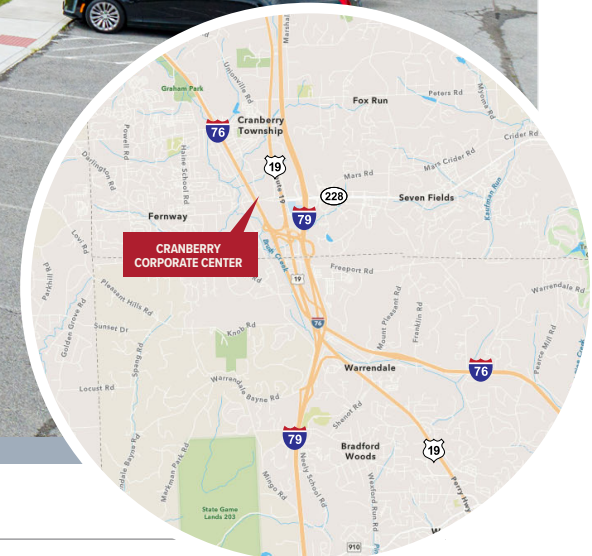
CRANBERRY CORPORATE CENTER – BLDG 230

230 EXECUTIVE DRIVE, CRANBERRY TOWNSHIP, PA 16066

FOR LEASE

1,148 SF
OFFICE/SHOWROOM SUITE

High Visibility Cranberry Location



1.5 miles



1.5 miles



0.5 miles



0.5 mile

FOR MORE INFORMATION:

RICH GASPERINI
rgasperini@genforrealestate.com
D 412.564.0752 | C 412.651.6888

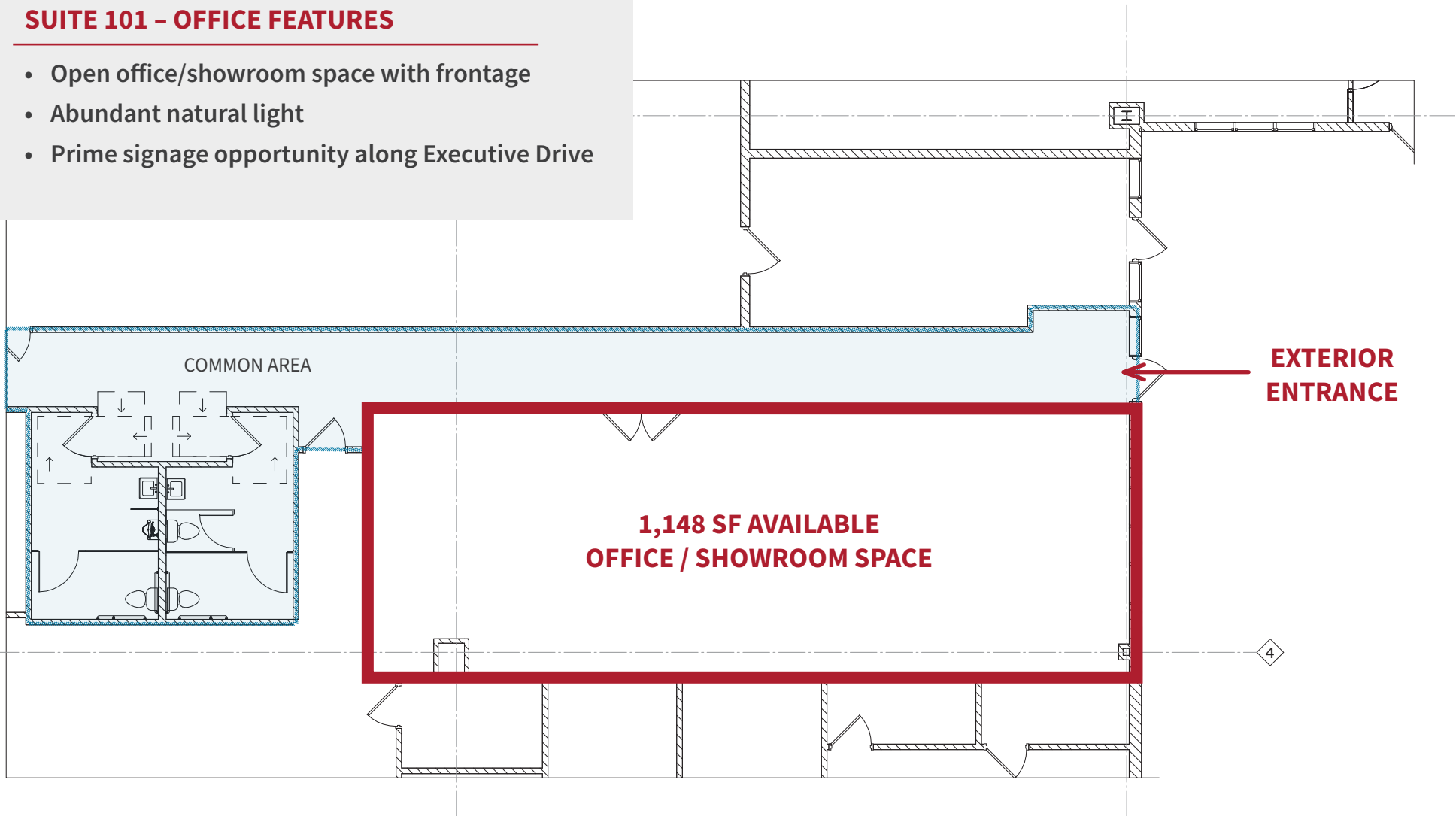
CONNOR JANGRO
cjangro@genforrealestate.com
D 412.564.0776 | C 412.805.7064



230 EXECUTIVE DRIVE | FLOOR PLAN – SUITE 101

SUITE 101 – OFFICE FEATURES

- Open office/showroom space with frontage
- Abundant natural light
- Prime signage opportunity along Executive Drive

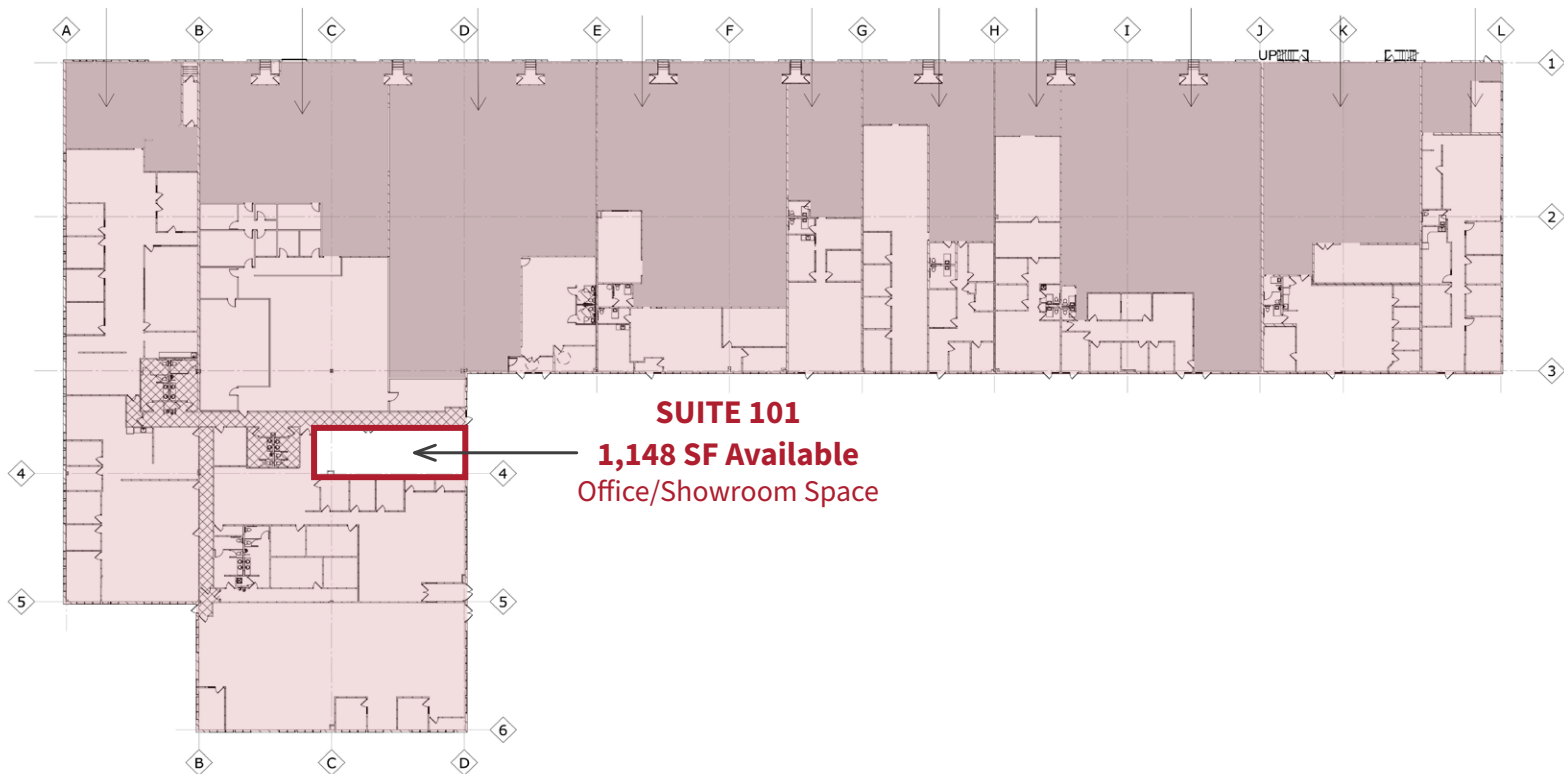


230 EXECUTIVE DRIVE | CRANBERRY CORPORATE CENTER



Property Highlights

- Quality office/showroom space in the heart of Cranberry Township, PA
- High visibility Cranberry location
- Excellent access to I-79, I-76/PA Turnpike, Route 228, Route 19 and Cranberry Township Amenities
- Professional Landlord - Cranberry Corporate Center is comprised of six (6) buildings totaling 215,000 SF all owned and managed by Silk & Stewart Development Group.



230 EXECUTIVE DRIVE – SUITE 101

FOR LEASE



CRANBERRY CORPORATE CENTER

NEARBY AMENITIES



CRANBERRY CORPORATE CENTER



Please contact the leasing team for more information:

RICH GASPERINI
rgasperini@genforrealestate.com
D 412.564.0752 | C 412.651.6888

CONNOR JANGRO
cjangro@genforrealestate.com
D 412.564.0776 | C 412.805.7064

GENFOR REAL ESTATE
One Altoona Place, Suite 2A
Pittsburgh, PA 15228
Office: 412.564.0750
www.genforrealestate.com

All information contained herein has been obtained from sources deemed reliable and Genfor, LLC does not doubt its accuracy; however, Genfor, LLC makes no guarantee, representation or warranty of any kind or nature, either express or limited, with respect to the accuracy or completeness of all or any portion of the information contained herein. Terms of availability of this property are subject to change and this property may be withdrawn without notice.

OWNED BY:



LEASING BY:

