

Prime Banking Center

1455 Newport Avenue
Pawtucket, Rhode Island
www.bankingcentersforsale.com

Bids Due: January 22, 2025



- + CBRE represents a national bank with prime banking center opportunities for purchase
- + Location will be purchased through a modified bid process with no banking deed restrictions or minimum bids
- + Visit www.BankingCentersForSale.com to view available properties as well as register and receive email notifications about new banking center opportunities

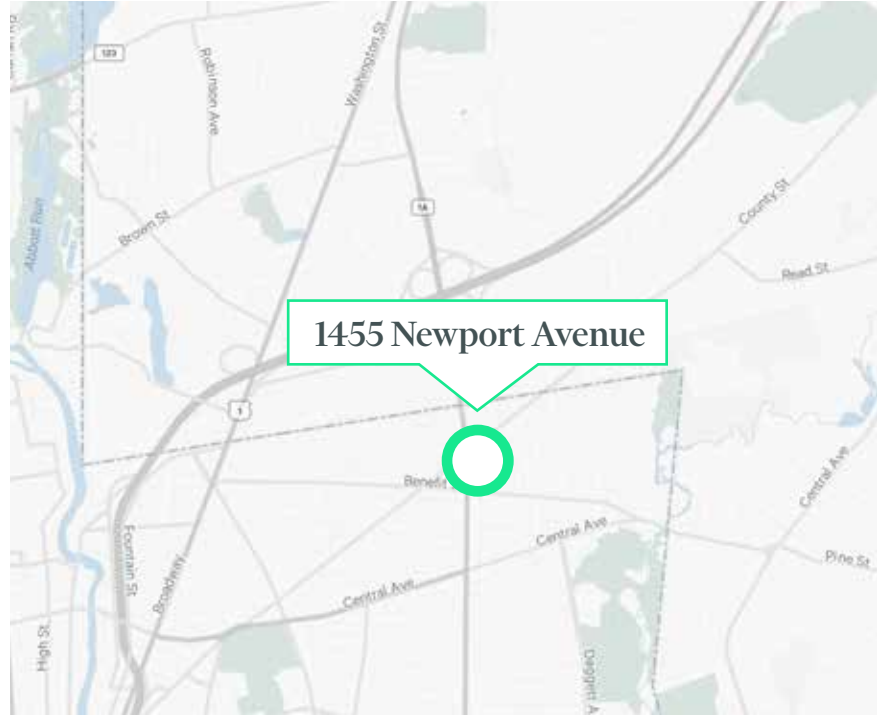
Property Info

Bank Highlights

- + Land Size
 - 0.65 acres
- + Building Size
 - 4,178 SF
- + Drive-Up Lanes
 - Three (3)
- + Parking
 - 33 spaces
- + Zoning
 - CG - Commercial General

Area Retailers

- + Dunkin'
- + Honey Dew Donuts
- + 7-Eleven
- + Market Basket
- + Dollar Tree
- + Stop & Shop



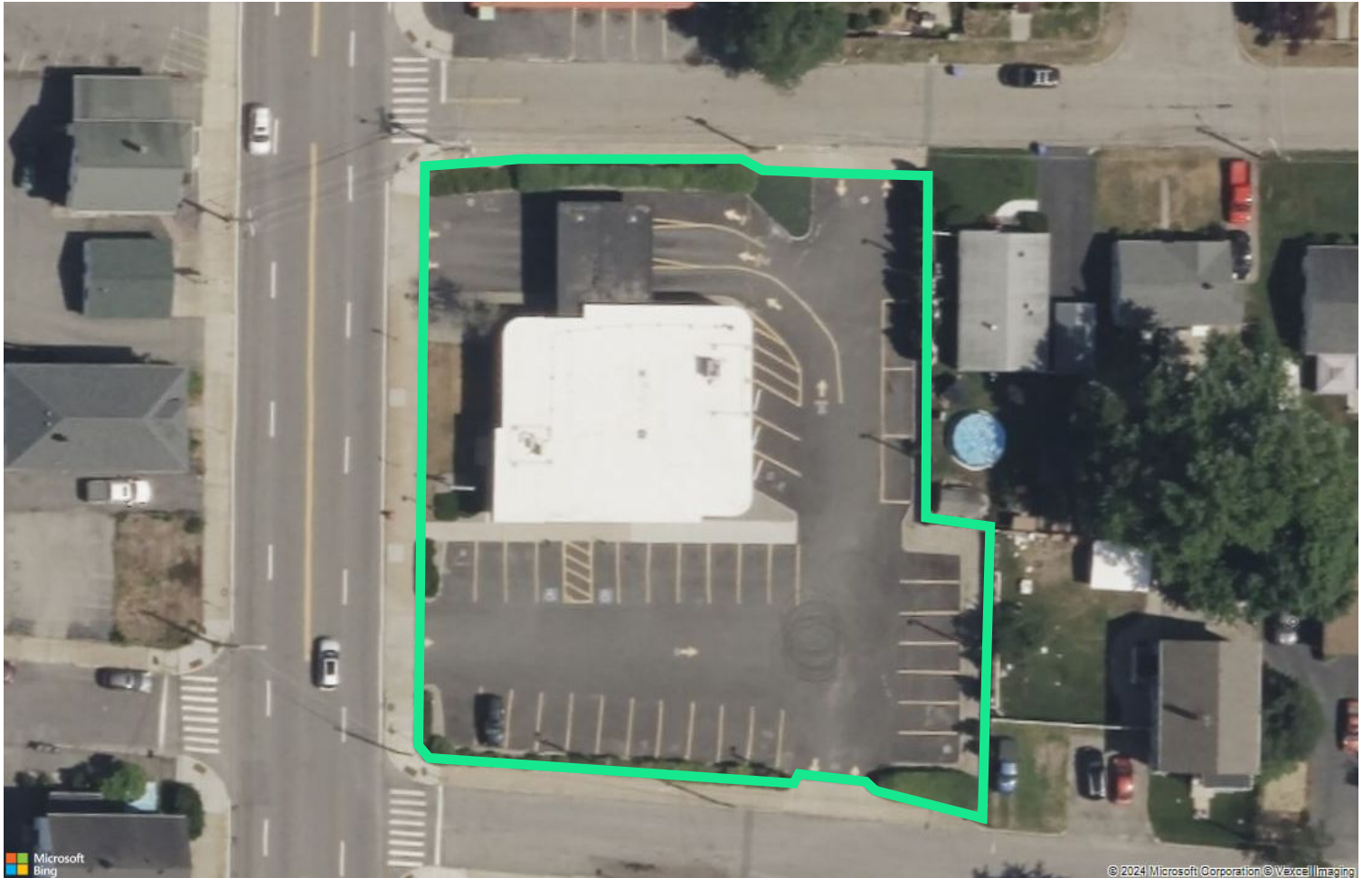
Demographics

2024 Demographics	0.5 Miles	1 Mile	3 Miles	5 Miles
Estimated Population	8,167	20,086	120,249	231,187
Estimated Population Growth 2024-2029	-0.11%	-0.18%	0.05%	0.18%
Estimated Households	3,345	8,356	48,226	95,123
Estimated Household Growth 2024-2029	0.01%	0.10%	0.23%	0.36%
Estimated Average Household Income	\$100,471	\$92,659	\$92,260	\$109,687

Neighborhood Retail Market



Site Plan



Prime Banking Center

1455 Newport Avenue | Pawtucket, Rhode Island

For Sale



Contact Us

Ryan Minihan

First Vice President
+1 617 912 6859
ryan.minihan@cbre.com

Christian Van Horn

Senior Associate
+1 401 266 5280
christian.vanhorn@cbre.com

Tyler Coady

Associate
+1 617 833 3631
tyler.coady@cbre.com

© 2024 CBRE, Inc. All rights reserved. This information has been obtained from sources believed reliable, but has not been verified for accuracy or completeness. You should conduct a careful, independent investigation of the property and verify all information. Any reliance on this information is solely at your own risk. CBRE and the CBRE logo are service marks of CBRE, Inc. All other marks displayed on this document are the property of their respective owners, and the use of such logos does not imply any affiliation with or endorsement of CBRE. Photos herein are the property of their respective owners. Use of these images without the express written consent of the owner is prohibited.