

# FOR SALE

# FLEX SPACE



## 10 CHRYSLER | IRVINE, CALIFORNIA

### PROPERTY HIGHLIGHTS

- 11,160 Executive Office
- 4,224 Warehouse
- 3,776 Manufacturing/Assembly
- Wrap Around Full Height Glass
- Divisible to 5,187 Sq. Ft. and 13,973 Sq. Ft.
- 59 Car Parking
- 1,200 AMPS 120/208
- 7 Restrooms and Kitchen
- Sprinklers
- Two Ground Level Doors
- Fenceable Yard
- Block and Steel Frame Construction
- Year Built 1984

### EXCLUSIVELY LISTED BY:

#### Kirk Cole

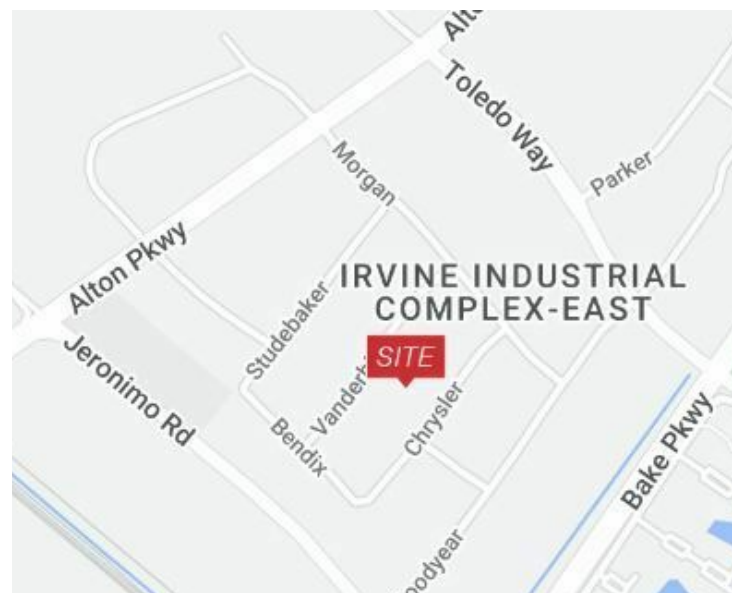
Senior Vice President  
949.468.2317 Direct  
kcole@naicapital.com  
CA DRE #00917736

### OFFERING SUMMARY

Building Size: 19,160 SF

### PROPERTY OVERVIEW

Corporate Headquarters/Research and Development.  
High Profile Located in The Irvine Spectrum.



[www.naicapital.com](http://www.naicapital.com)

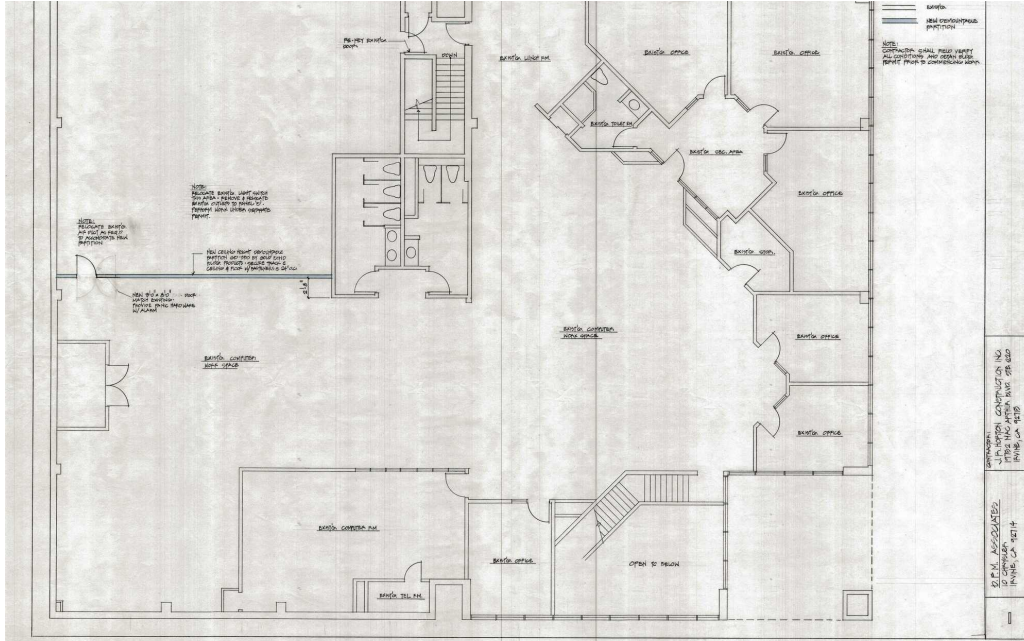


**Kirk Cole**  
Senior Vice President  
949.468.2317 Direct  
kcole@naicapital.com

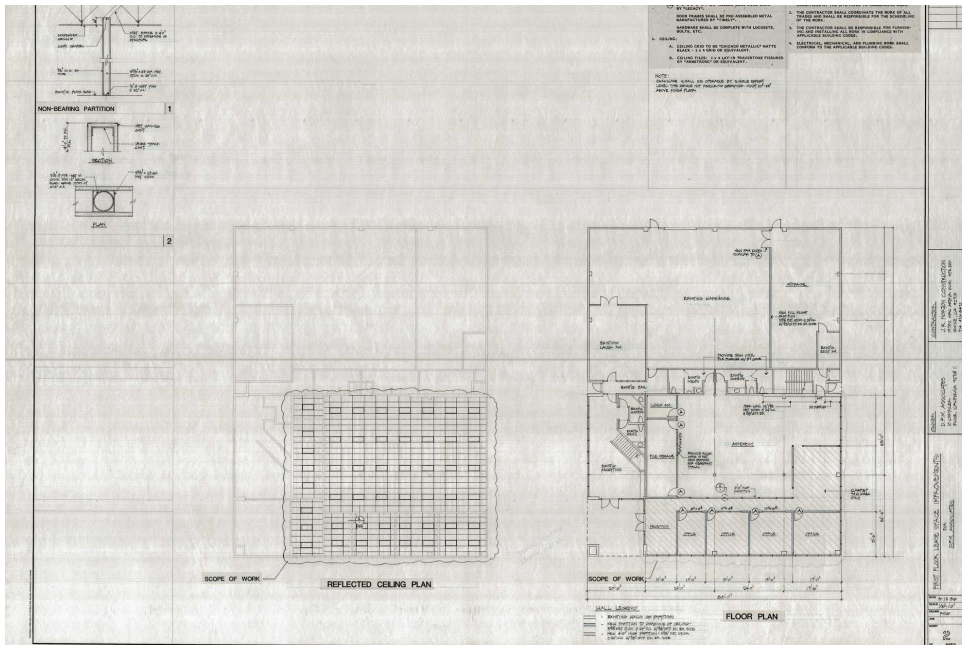
CA DRE #00917736

No warranty, express or implied, is made as to the accuracy of the information contained herein. This information is submitted subject to errors, omissions, change of price, rental or other conditions, withdrawal without notice, and is subject to any special listing conditions imposed by our principals. Cooperating brokers, buyers, tenants and other parties who receive this document should not rely on it, but should use it as a starting point of analysis, and should independently confirm the accuracy of the information contained herein through a due diligence review of the books, records, files and documents that constitute reliable sources of the information described herein. Logos are for identification purposes only and may be trademarks of their respective companies. NAI Capital Commercial, Inc. CAL DRE Lic. #02130474

NAI Capital | 1920 Main Street #100 | Irvine, CA 92614



Suite A



Suite B

**Kirk Cole**  
Senior Vice President  
949.468.2317 Direct  
kcole@naicapital.com  
CA DRE #00917736

No warranty, express or implied, is made as to the accuracy of the information contained herein. This information is submitted subject to errors, omissions, change of price, rental or other conditions, withdrawal without notice, and is subject to any special listing conditions imposed by our principals. Cooperating brokers, buyers, tenants and other parties who receive this document should not rely on it, but should use it as a starting point of analysis, and should independently confirm the accuracy of the information contained herein through a due diligence review of the books, records, files and documents that constitute reliable sources of the information described herein. Logos are for identification purposes only and may be trademarks of their respective companies. NAI Capital Commercial, Inc. CAL DRE Lic. #02130474