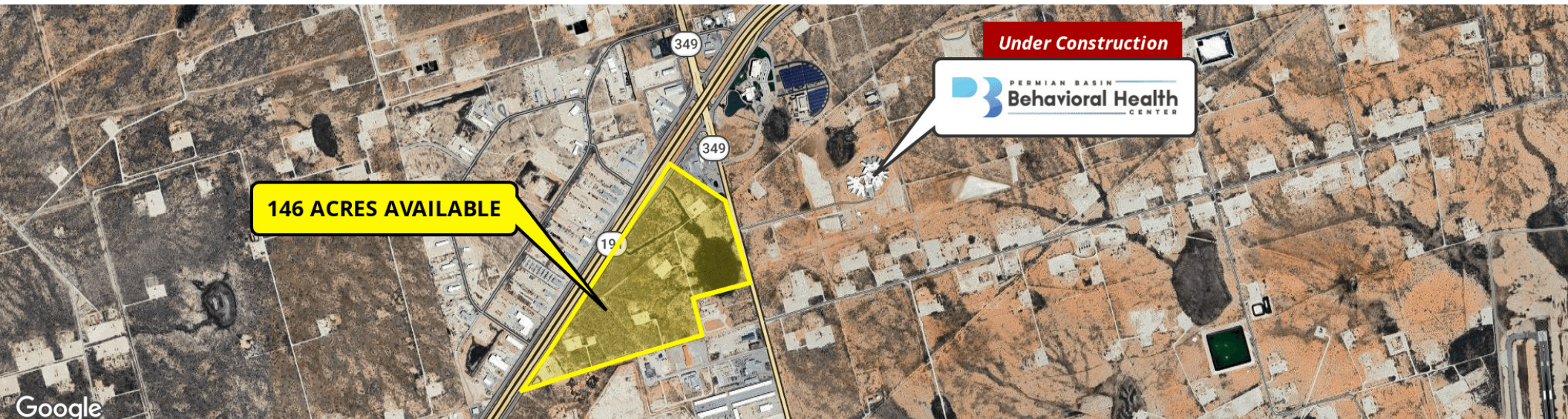


FOR SALE | 146 ACRES

SW CORNER OF TX 191 AND FM 1788

Midland, TX 79707



Property Description

146 Acres – A prime investment opportunity in Midland! Situated at the southwest corner of HWY 191 and FM 1788, this property offers tremendous development potential. Its strategic location makes it ideal for a variety of projects, including retail, storage, multi-tenant spaces, industrial, flex, or owner-user developments.

Property Highlights

- Raw Development Land | Can be Divided
- Excellent Frontage, Visibility, & Access to Hwy 191 & FM 1788
- Inside City Limits | City Water to Shared property Lines with Pilot Travel Center
- Just Minutes from Notable Landmarks: Midland International Airport, the Wagner Noel Performing Arts Center, and UTPB's CEED Building

Location Description

The property offers easy access to major highways, conveniently located just south of Hwy 191 and 1788, and centrally positioned between Midland and Odessa.

Offering Summary

List Price:	\$125,000/AC
Total Acres:	146 Acres

Surrounding Development

The Permian Basin Behavioral Health Center (PBBHC), a 200-bed, \$232 million facility, is *under construction* near the intersection of Highway 191 and FM 1788 between Midland and Odessa. Scheduled to open in early 2026, it will provide comprehensive inpatient and outpatient mental health services for adults and adolescents, including a crisis stabilization unit.

Tommy Reynolds

Agent
432.413.6393
tommy@moriahrealstate.com



146 ACRES

SW CORNER OF TX 191 AND FM 1788

Midland, TX 79707



146 ACRES

Tommy Reynolds
Agent
432.413.6393
tommy@moriahrealstate.com

MORIAH
BROKERAGE SERVICES, LLC

146 AC SW CORNER OF TX 191 AND FM 1788

Midland, TX 79707



Contact Broker:

Tommy Reynolds

Agent
432.413.6393
tommy@moriahrealestate.com



15 Smith Road, Suite 6004, Midland, TX 79705
432.682.2510 | moriahbrokerageservices.com