

FOR LEASE

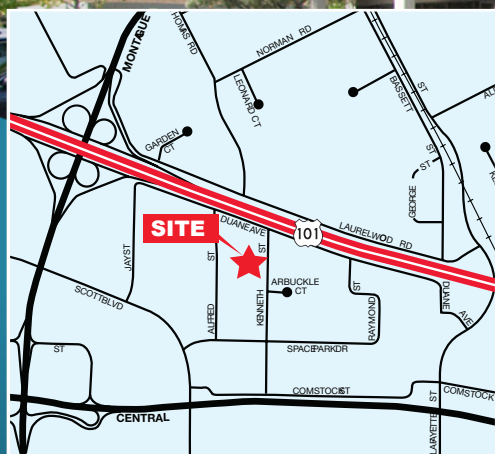


3070 & 3084 KENNETH STREET

Two ±2,544 SF Units

SANTA CLARA

FULL COMMISSION TO PROCURING BROKER



2.5/1,000 Parking

14.5' Clear Height

\$0.18/SF CAM Charge

Low Santa Clara Utility Rate

31,906 SF Project

Call to Arrange Tour

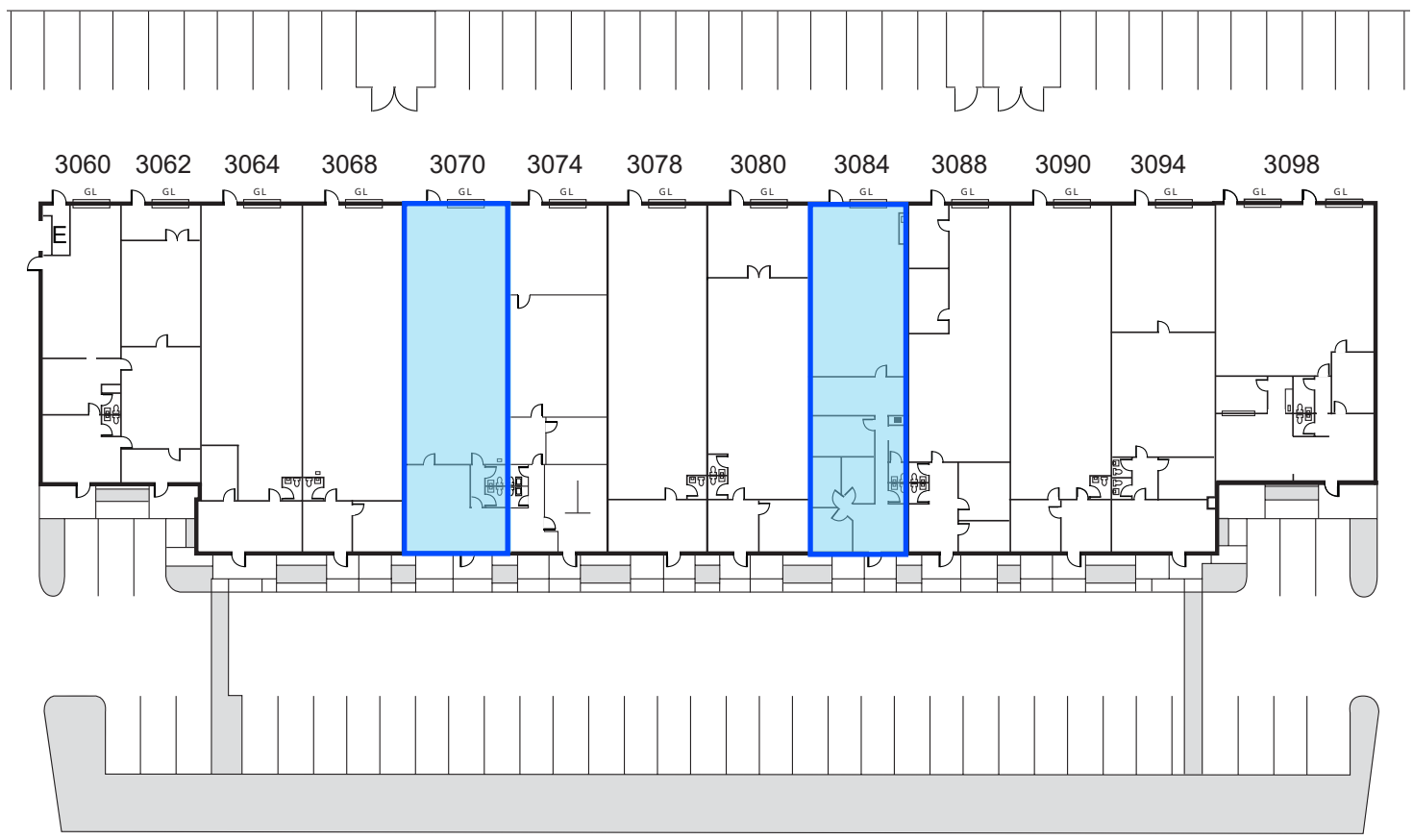
Unit	Size	HVAC / Drop Ceiling Area	Electrical Service	Loading	Availability Date	Asking Rate
3070	±2,544 SF	100%	225 Amps	1 GL	Immediately	\$1.95 Gross
3084	±2,544 SF	50%	200 Amps	1 GL	Immediately	\$1.95 Gross



3070 & 3084 KENNETH STREET

SANTA CLARA

SITE PLAN



NOT ACCURATE OR TO SCALE

KENNETH STREET

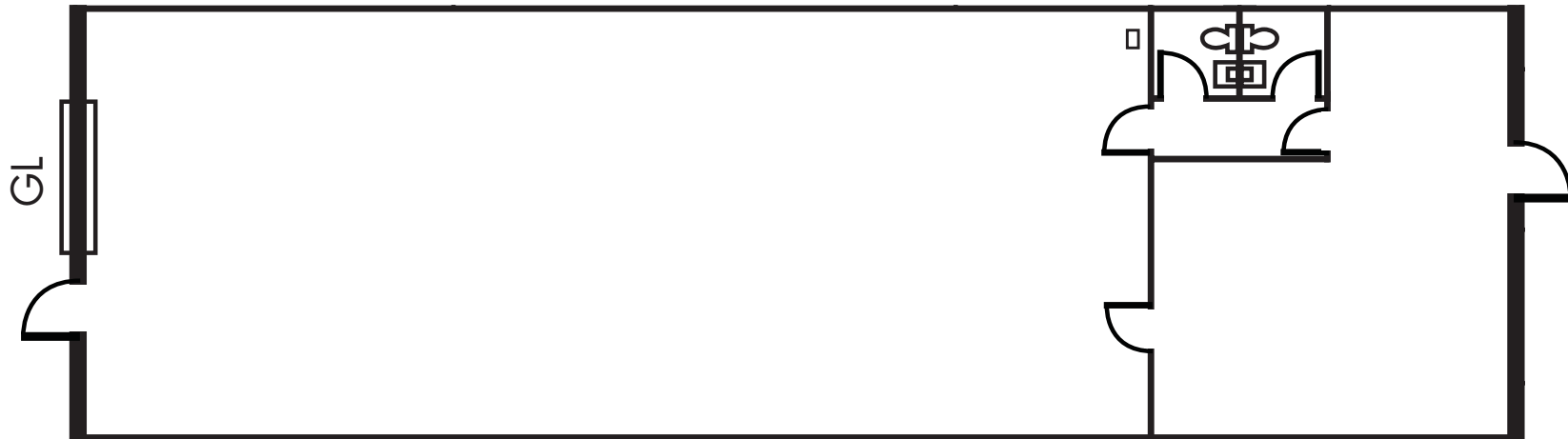
■ Available



3070 & 3084 KENNETH STREET

SANTA CLARA

FLOOR PLAN



NOT ACCURATE OR TO SCALE

3070 Kenneth Street : ±2,544

- Flex/Lab Unit
- 100% Drop Ceiling/HVAC
- 2 Restrooms
- Shop Sink in Warehouse
- 225 Amp Electrical Service
- LED Lighting
- Insulated Ceiling
- One Grade Level Roll Up Door
- \$1.95/SF, Gross; \$0.18/SF CAM
- Available for Immediate Occupancy



3070 & 3084 KENNETH STREET

SANTA CLARA

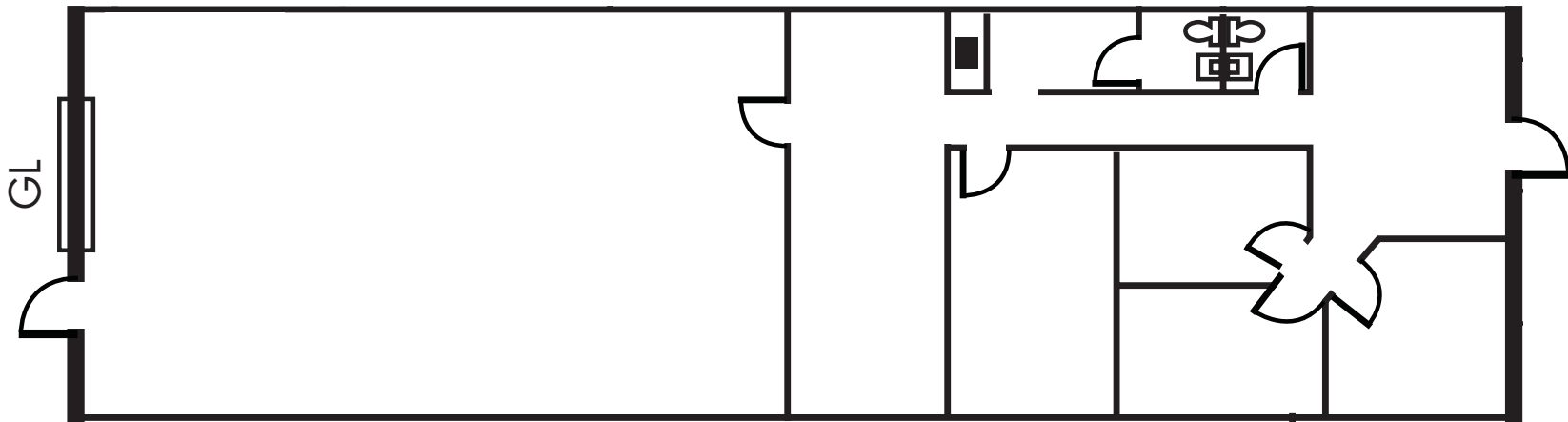


WILLIAM STEELE | Senior Managing Director
408.982.8458 | bill.steele@nmrk.com | CA RE License #00938326

3070 & 3084 KENNETH STREET

SANTA CLARA

FLOOR PLAN



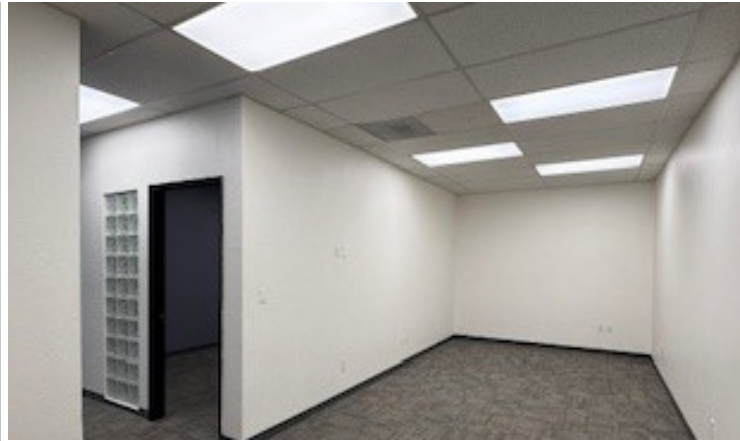
NOT ACCURATE OR TO SCALE

3084 Kenneth Street : ±2,544 SF

- 50% Drop Ceiling/HVAC
- 2 Restrooms
- Break Area with Coffee Bar
- 200 Amp Electrical Service
- LED Lighting
- Insulated Warehouse Ceiling
- Upgraded Interiors
- \$1.95/SF, Gross; \$0.18/SF CAM
- Available for Immediate Occupancy



3070 & 3084 KENNETH STREET SANTA CLARA



WILLIAM STEELE | Senior Managing Director
408.982.8458 | bill.steele@nmrk.com | CA RE License #00938326