



Endless Possibilities!

Presented by:



Steve Scheppe, REALTOR

Direct: 231-590-5823 | Office: 231-943-6145
steve@yourviewpointrealty.com

2308 US 31 N | Traverse City, MI 49686



www.YourViewpointRealty.com

Unique Space for New Opportunities!



This unique commercial property, located in the heart of Leelanau County, offers an incredible opportunity for a thriving business venture. The property features a fully equipped curling facility, making it a one-of-a-kind attraction in the area. Additionally, it boasts a spacious bar and restaurant, with Class C Liquor License, making it perfect for dining and social gatherings. There is ample outdoor space for dining, allowing guests to enjoy the natural beauty of Leelanau County. The property also includes a versatile gym area, ideal for fitness classes or additional event space. With its diverse amenities, this property is perfectly suited for an event venue, catering to a wide range of activities and clientele.

172 W Burdickville Rd | Maple City, MI 49664

Restaurant Entrance



This charming restaurant space features a welcoming entry with a stylish hostess stand, leading to a thoughtfully designed dining area. The property includes ample outdoor seating, perfect for alfresco dining, and convenient restrooms easily accessible from the main area.

172 W Burdickville Rd | Maple City, MI 49664

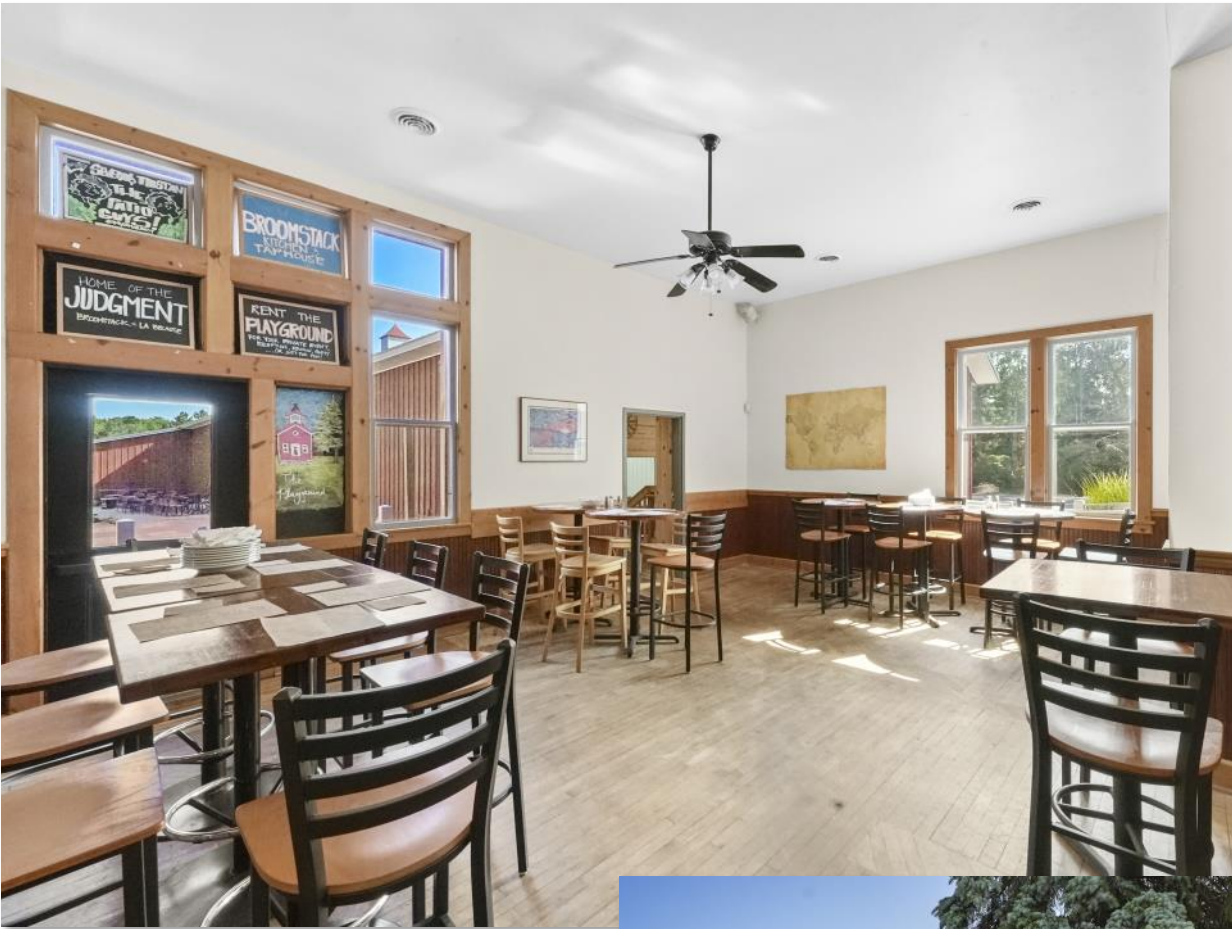
Bar and Restaurant Amenities



This restaurant offers a spacious seating area complemented by a well-appointed bar, creating a vibrant atmosphere for diners. The layout is ideal for both casual and upscale dining experiences. Behind the scenes, a fully equipped commercial kitchen ensures efficient service, while a lower-level prep kitchen provides additional space for food preparation and storage.

172 W Burdickville Rd | Maple City, MI 49664

Bring your Imagination!



Nestled between the curling facility and the adjacent restaurant, this seating area offers a comfortable and inviting spot for visitors to relax and socialize. With easy access to both the rinks and the dining area, this space serves as a perfect gathering place.



172 W Burdickville Rd | Maple City, MI 49664

Curling Facility



This curling facility offers a unique blend of sport and social amenities. It features a spacious viewing area where spectators can enjoy the game in comfort, directly adjacent to a restaurant and bar.



172 W Burdickville Rd | Maple City, MI 49664

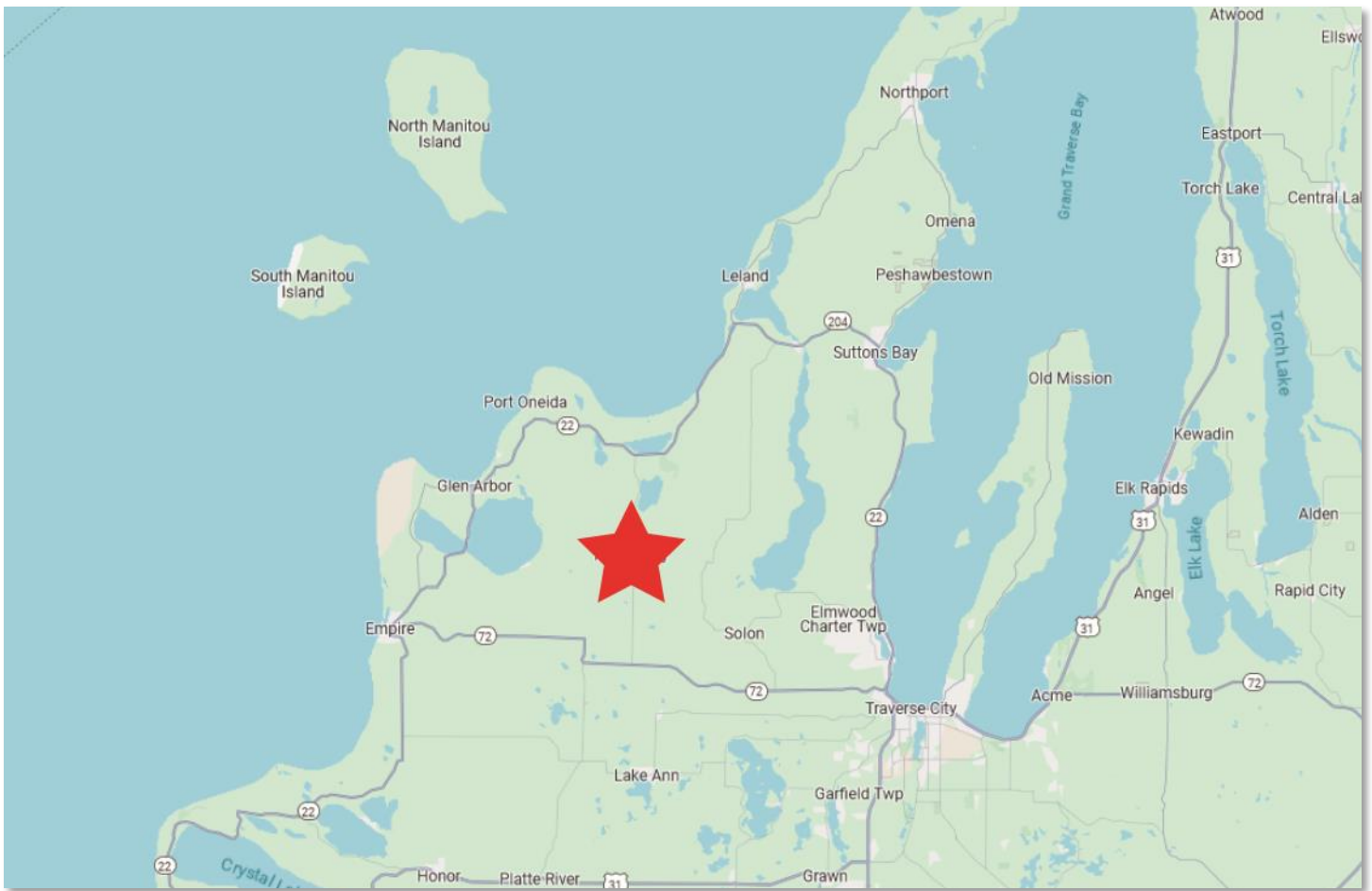
Charming Details



This unique gym facility exudes rustic charm, with walls lined in beautiful knotty pine that add warmth and character to the space. Once serving as a basketball court and gymnasium when the building was a schoolhouse, the gym retains its historic appeal while offering modern amenities. The open layout is perfect for fitness classes, sports activities, or personal training sessions, all within a setting that blends nostalgia with functionality.

172 W Burdickville Rd | Maple City, MI 49664

In the Heart of Leelanau County



Sited in the heart of Leelanau County, this prime commercial property offers an unparalleled opportunity for businesses looking to establish a presence in one of Michigan's most sought-after regions. The property boasts a strategic location making it ideal for a variety of commercial uses. Whether you're envisioning an event center, boutique retail space, a cozy café, or a professional office, this property's potential is limitless. Surrounded by the natural beauty of Leelanau County and close to popular tourist destinations, it offers a vibrant community atmosphere. Don't miss the chance to invest in this rare gem, perfectly positioned to thrive in the bustling Leelanau County market.

172 W Burdickville Rd | Maple City, MI 49664