



600 Lakeshore Parkway,
Birmingham, Alabama
35209

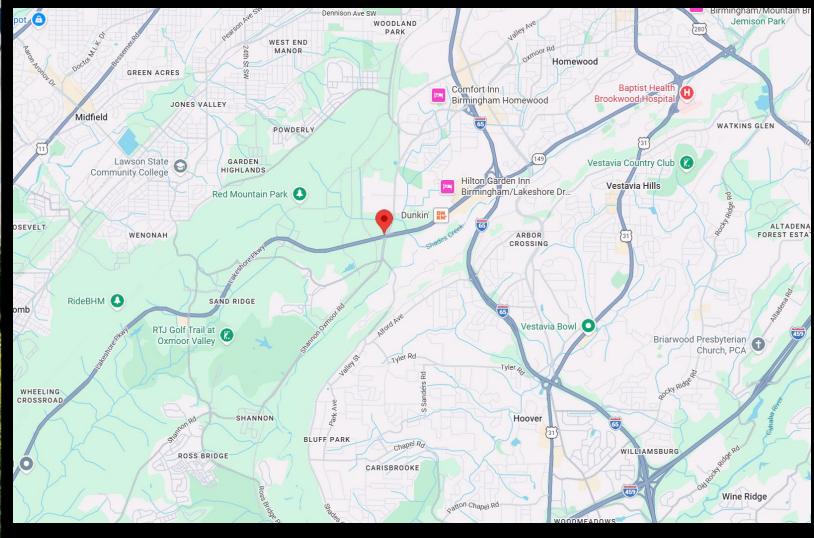


AVAILABLE
2.8 ACRE
HARD CORNER
DEVELOPMENT SITE

Lakeshore Pkwy
33,625 VPD

W. Oxmoor Rd
18,053 VPD

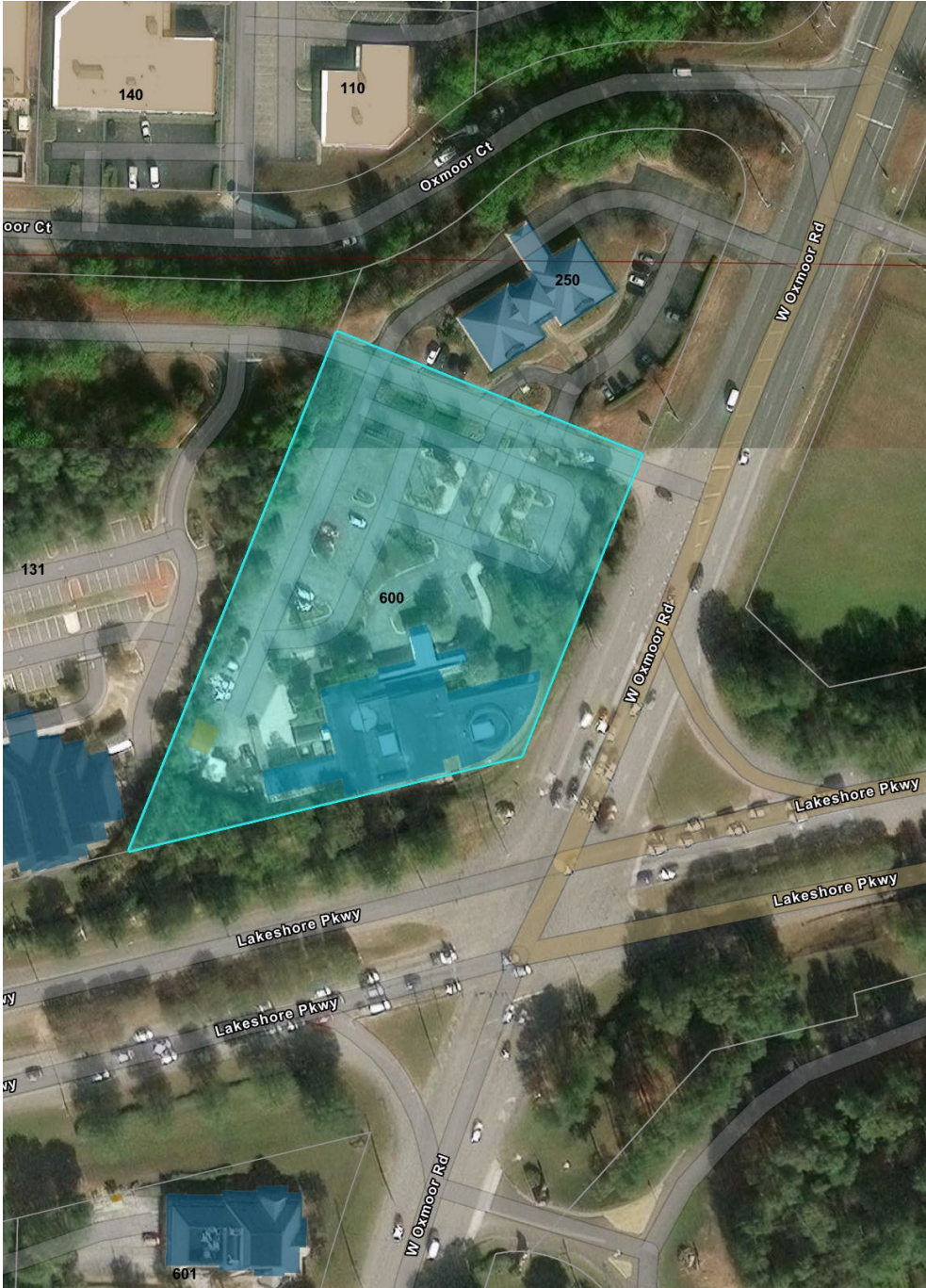
76 Parking
Spaces
5.1/1000 Ratio



Hard Corner Development Opportunity on Lakeshore Pkwy

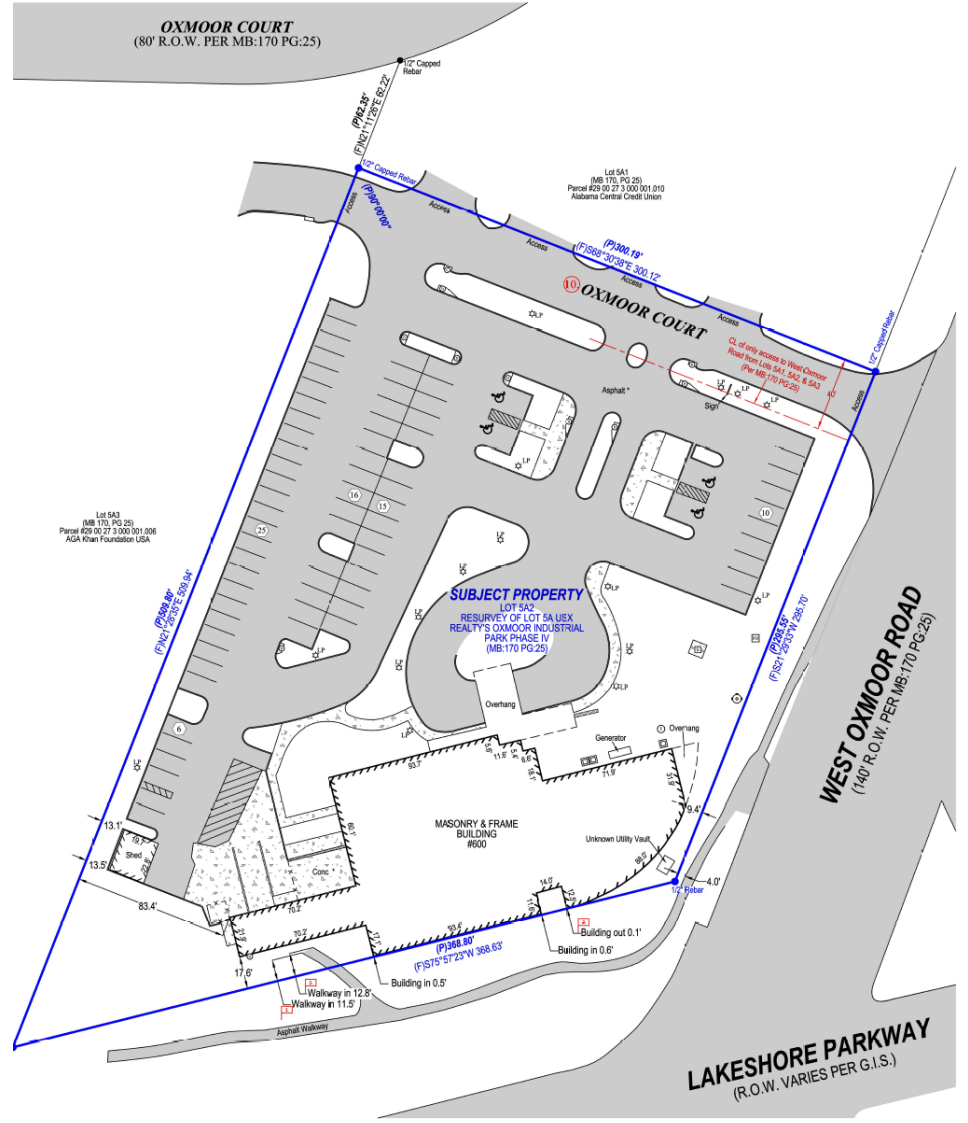
- ±2.77 Acres (120,873 SF)
- Located at W. Oxmoor Road and Lakeshore Pkwy
- Hard corner location with dual road frontage offering exposure to more than 50,000 VPD
- MXD Zoning, City of Birmingham





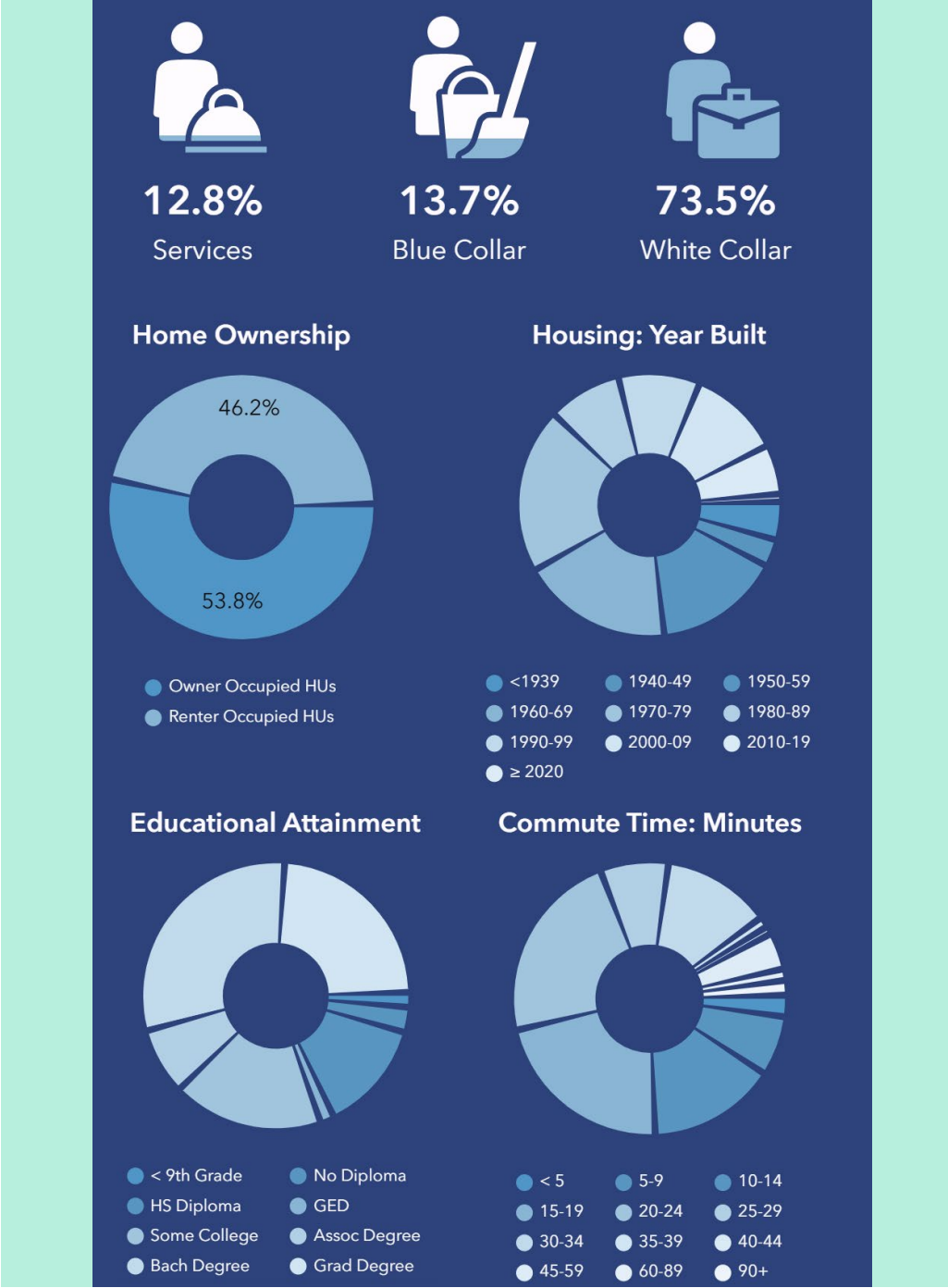
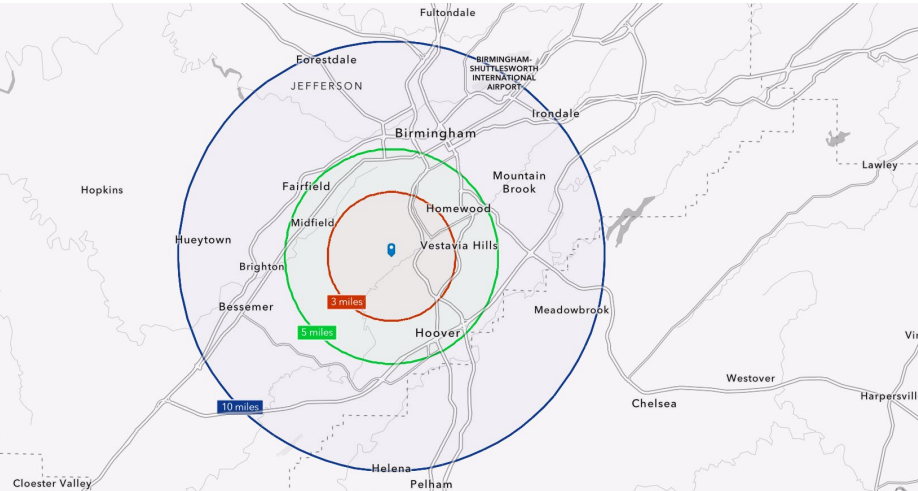
ALTA/NSPS LAND TITLE SURVEY

SECTION 27, TOWNSHIP 18 SOUTH, RANGE 3 WEST
 HUNTSVILLE PRINCIPAL MERIDIAN
 JEFFERSON COUNTY, ALABAMA



DEMOGRAPHICS AND COMMUNITY SNAPSHOT

	3 Mile	5 Mile	10 Mile
Population	54,453	171,456	462,926
Housing Units	23,952	71,617	195,665
Average Household Income	\$108,516	\$108,536	\$109,319
Annual Household Health Care Spending	\$7,128	\$7,233	\$7,319





FOR MORE INFORMATION CONTACT:

Katy Lincoln

205.706.0676

katy@lincolncre.com

2208 University Blvd | Suite 102 | Birmingham, AL 35223

www.lincolncre.com | 205.706.0676