

SAN JOSE CONTEMPORARY OFFICE SPACE FOR LEASE NEAR VALLEY MEDICAL CENTER

±2,000 SQUARE FEET

PLUG & PLAY AVAILABLE

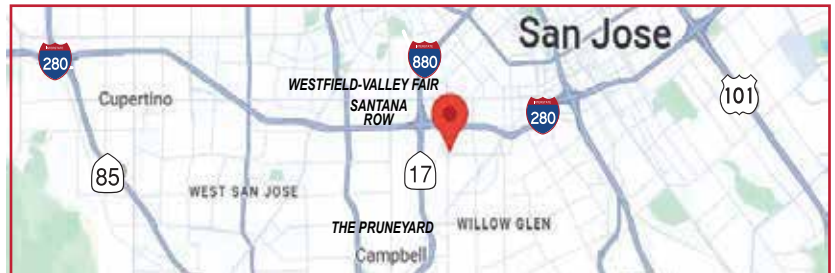


828 SOUTH BASCOM AVENUE, SUITE 180, SAN JOSE

Features:

- Modern Office Building with Contemporary Interiors
- Professionally Managed Property
- Secured Building Access After Business Hours
- Surrounded by Numerous Lunch Choices
- Centrally Located to 280/880/17 Interchange

- So convenient..... +/- 5 Min Drive to Santana Row/Downtown San Jose/Willow Glen/The Pruneard/Downtown Campbell



Please Contact Exclusive Agent:

JULIE MERCIK jmercik@ritchiecommercial.com
DRE Lic. #00851651 1.408.234.1599

RITCHIE *Commercial*
RESPONSIBLE REAL ESTATE

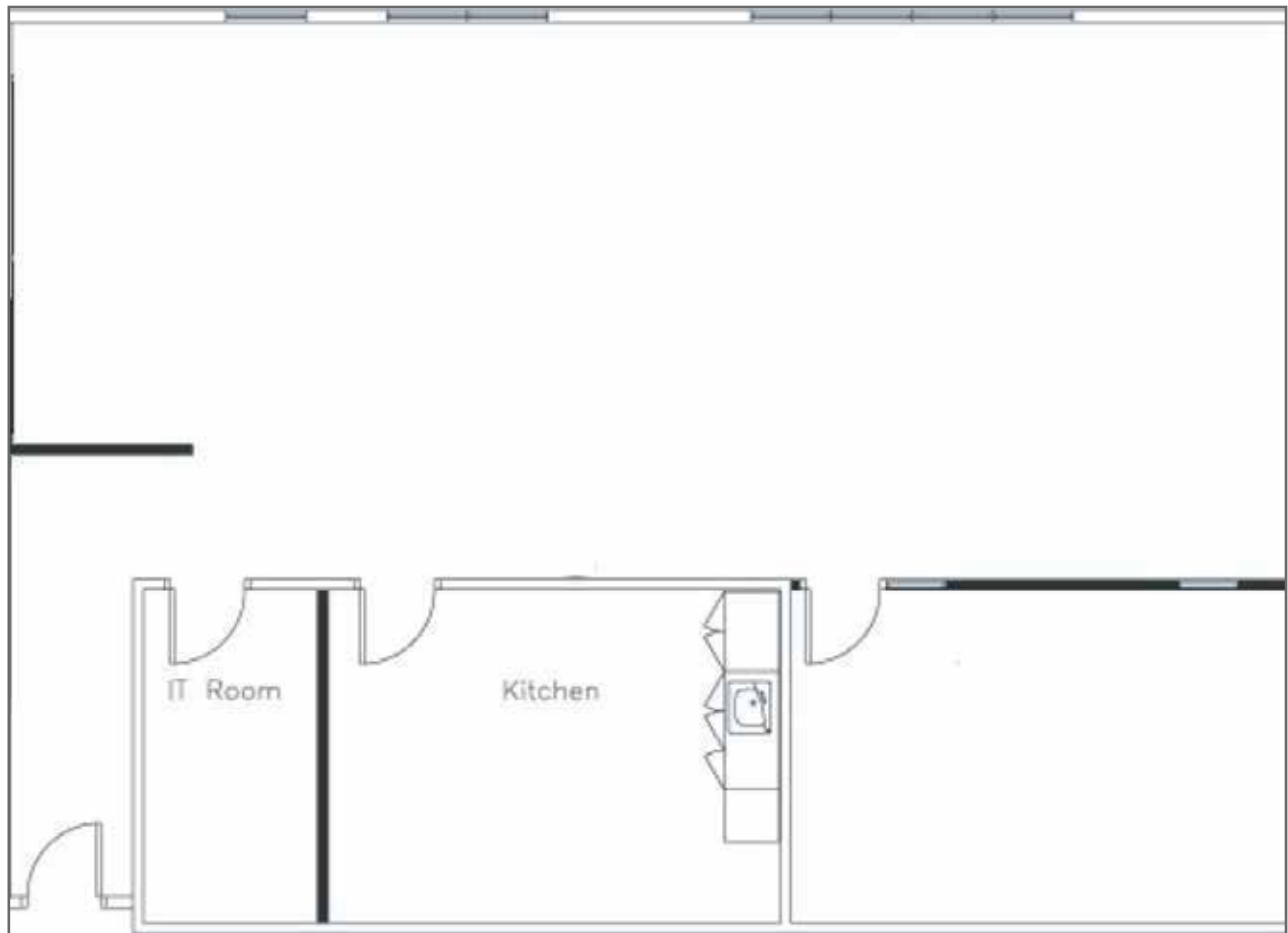
34 W. SANTA CLARA STREET, SAN JOSE, CA 95113
DRE # 01209214 | www.ritchiecommercial.com
1 408.971.2700 f 1 408.971.1600

The information contained herein has been obtained from sources we deem reliable.
We cannot, however assume responsibility for its accuracy.

San Francisco | San Jose | Santa Cruz

**SAN JOSE CONTEMPORARY OFFICE SPACE FOR LEASE
NEAR VALLEY MEDICAL CENTER**

± 2,000 SQUARE FEET



828 SOUTH BASCOM AVENUE, SUITE 180, SAN JOSE

