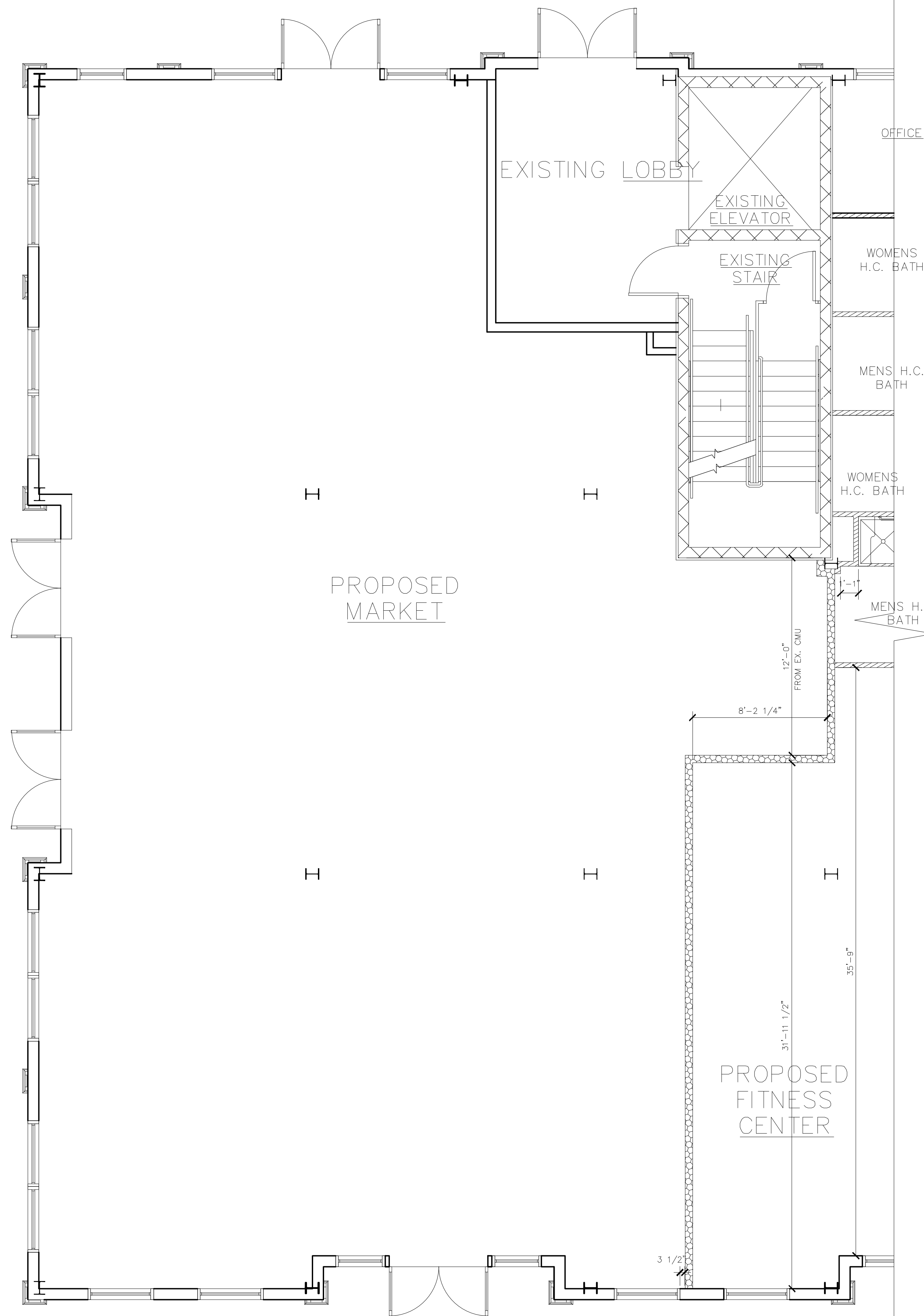


EXISTING SPACE PLAN



Phillips Enterprises, Inc.
Design, Consulting & Project Management
www.foodmarkdesigns.com

CONTACT:

PROJECT MANAGER: DAN PHILLIPS
(425-894-9335)
DESIGNED BY: TOM PHILLIPS
(206-940-4849)
DRAWN BY: TIM PHILLIPS
(360-222-2363)

221 2ND STREET, #3
LANGLEY, WA 98260

PROJECT:

THE VILLAGE MARKET
NEW JERSEY

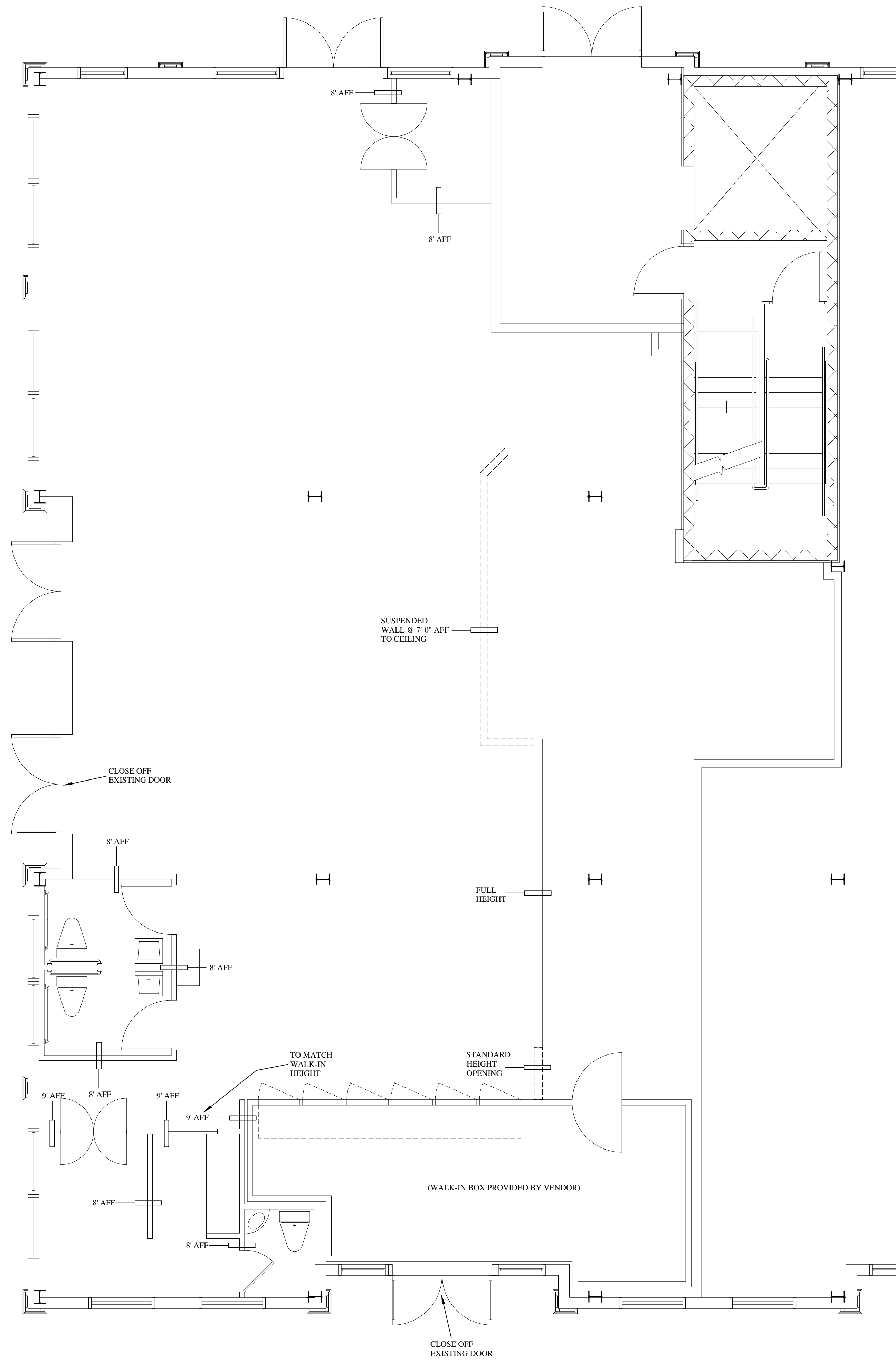
DATE: 1.6.2017

SHEET:

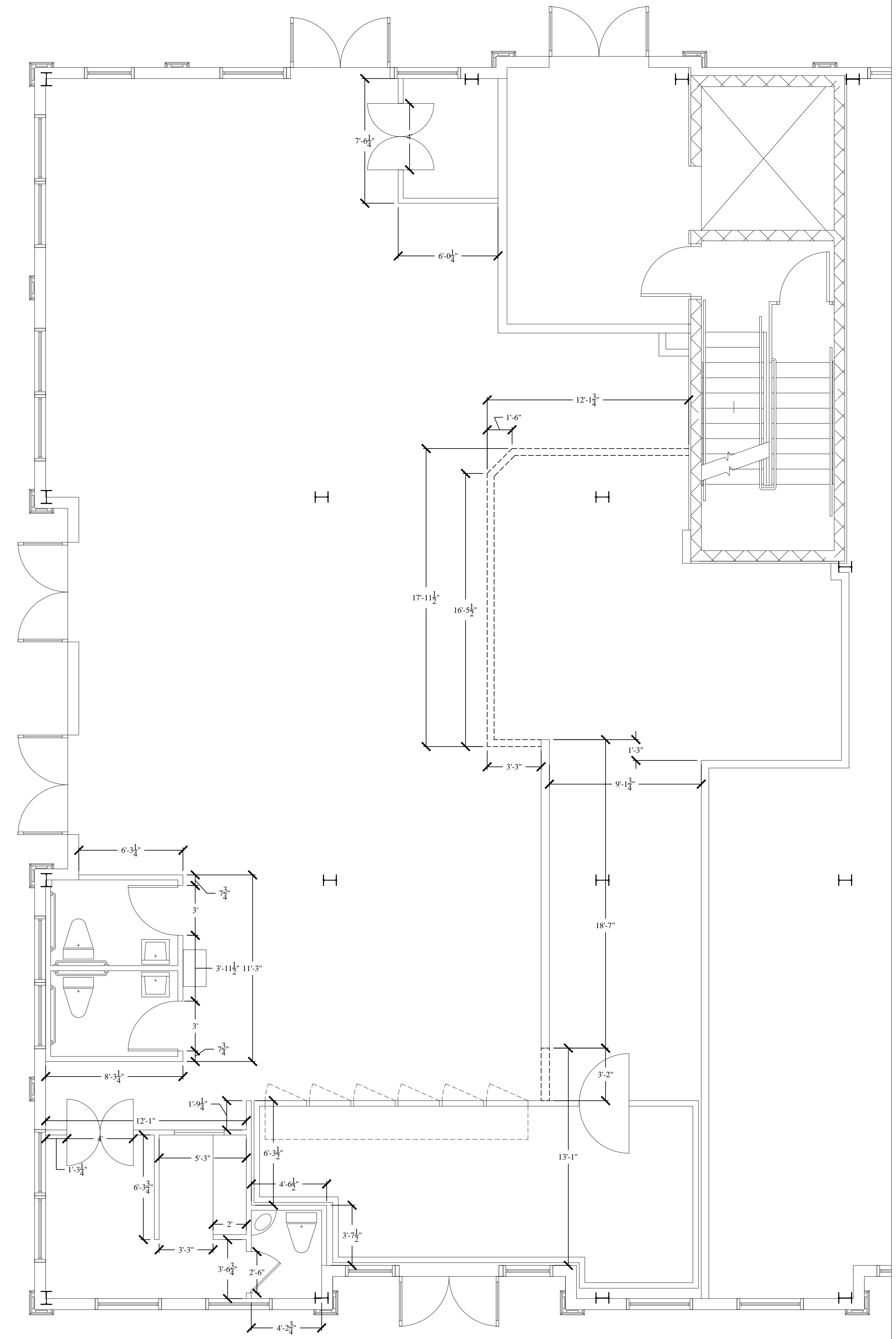
SCALE: 1/4" = 1'

F1.0

NEW WALL DETAILS



NEW WALL DIMENSIONS



SHEET NAME:

WALL DETAILS



Phillips Enterprises, Inc.
Design, Consulting & Project Management
www.foodmarkdesigns.com

CONTACT:
PROJECT MANAGER: DAN PHILLIPS
(425-894-9335)
DESIGNED BY: TOM PHILLIPS
(206-940-4849)
DRAWN BY: TIM PHILLIPS
(360-222-2363)

221 2ND STREET, #3
LANGLEY, WA 98260

PROJECT:
**THE VILLAGE MARKET
NEW JERSEY**

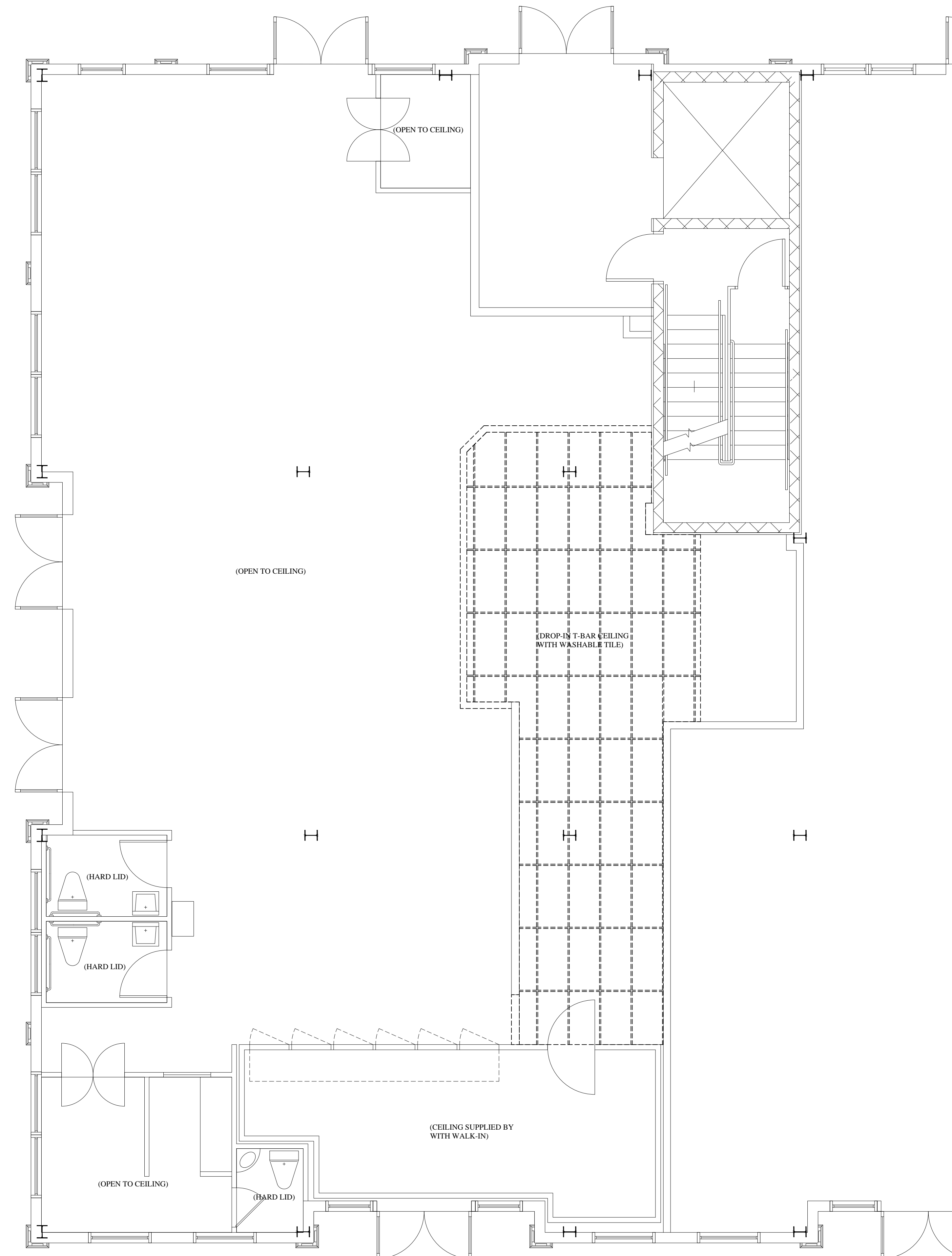
DATE: 1.6.2017

SHEET:

SCALE: 1/4" = 1'

F1.1

CEILING PLAN



Phillips Enterprises, Inc.
Design, Consulting & Project Management
www.foodmarkdesigns.com

CONTACT:

PROJECT MANAGER: DAN PHILLIPS
(425-894-9335)
DESIGNED BY: TOM PHILLIPS
(206-940-4849)
DRAWN BY: TIM PHILLIPS
(360-222-2363)

221 2ND STREET, #3
LANGLEY, WA 98260

PROJECT:

THE VILLAGE MARKET
NEW JERSEY

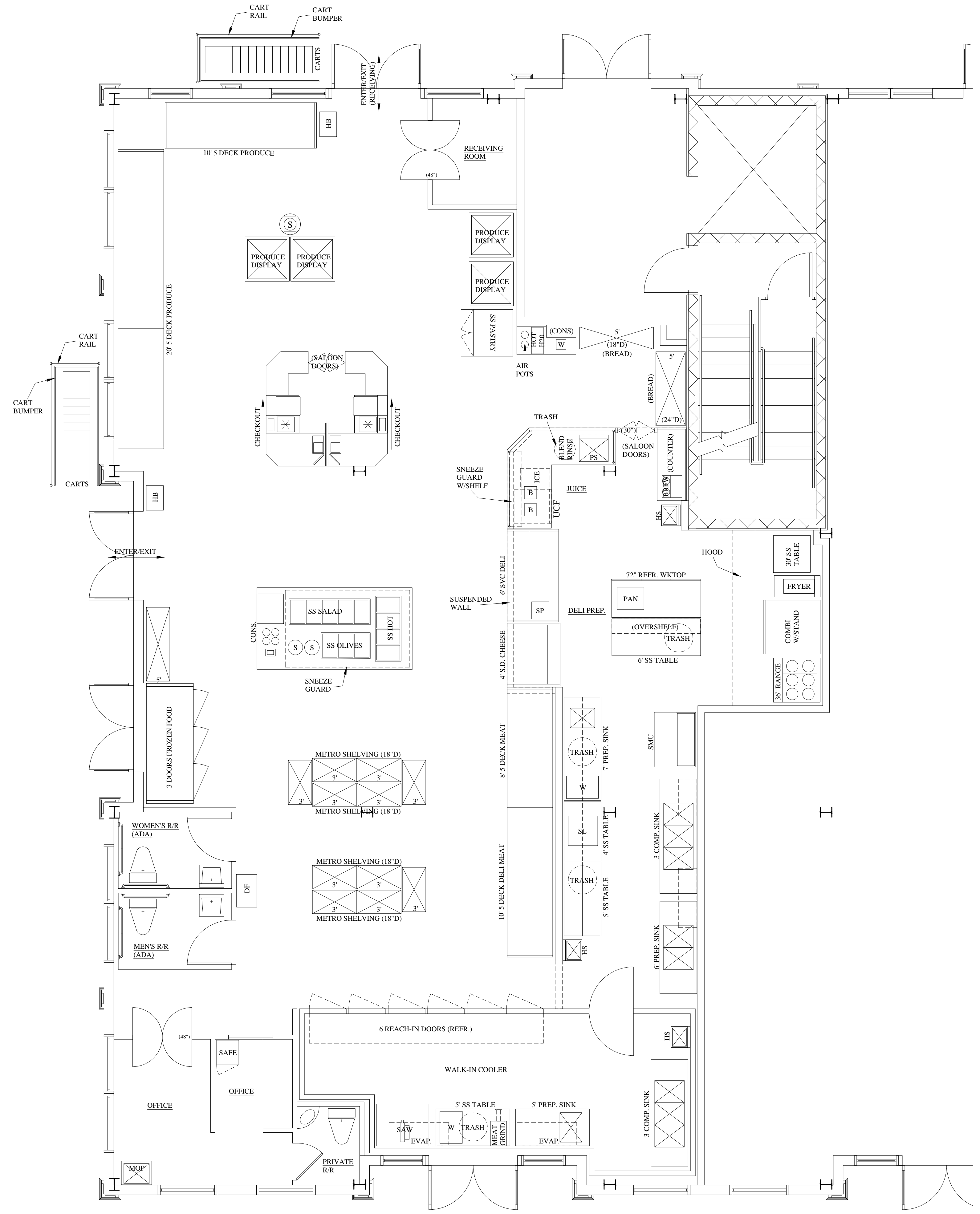
DATE: 1.6.2017

SHEET:

SCALE: 1/4" = 1'

F1.2

FIXTURE PLAN



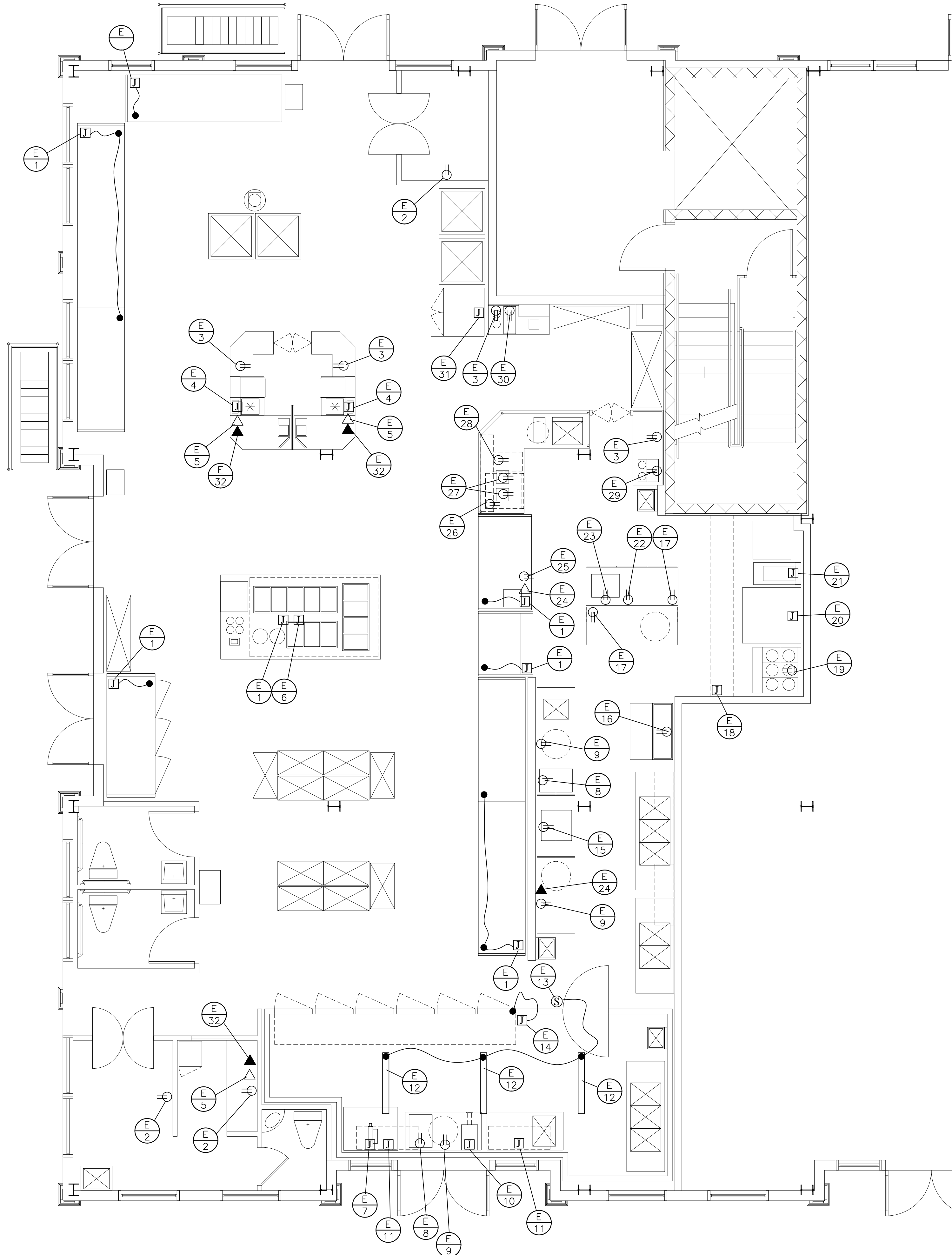
Phillips Enterprises, Inc.
 Design, Consulting & Project Management
 www.foodmarkdesigns.com

CONTACT:
PROJECT MANAGER: DAN PHILLIPS
 (425-894-9335)
DESIGNED BY: TOM PHILLIPS
 (206-940-4849)
DRAWN BY: TIM PHILLIPS
 (360-222-2363)

221 2ND STREET, #3
 LANGLEY, WA 98260

PROJECT:
 THE VILLAGE MARKET
 NEW JERSEY

DATE: 1.6.2017
SCALE: 1/4" = 1'
SHEET:
F2.0



ELECTRICAL NOTES

1. Electrician/Engineer is responsible for power to all locations and connections of all equipment, including refrigeration equipment. Involvement of Refrigeration Contractor in refrigeration power wiring to be determined by customer.
2. Electrician/Engineer is to design and install distribution system and be responsible for all wire sizing and connections.
3. All electrical services for walk-in coolers are to come from overhead.
4. Electrician/Engineer is to provide weatherproof disconnect switches on all equipment where required per local code.
5. All work is to be installed as per plan and in accordance with all local governing codes.
6. Electrician/Engineer is to provide power for connection of all HVAC equipment where applicable.
7. Verify with owner for exterior signage where applicable.
8. Electrical numbers shown, denote power locations for equipment. Actual circuits and stub up locations are determined by electrical engineer.
9. Field verify all locations.
10. Electrician/Engineer is responsible for all applicable permits.
11. Equipment which is shown with "J" box designation requires hardwire connection.
12. That equipment which is shown with a convenience outlet symbol is a duplex outlet unless stated otherwise, and designates the equipment is plug in.
13. Voice/Data cabling is to be supplied and installed by Electrician/Engineer and to supply conduit if necessary per local codes.
14. Electrician/Engineer to verify plug requirements per equipment spec. Outlets and "J" boxes shown are for reference purposes only and could vary based on final equipment specification chosen by customer.

ELECTRICAL LEGEND

- ⊖ ELECTRICAL SPEC. CALLOUT
- ⊖ DUPLEX RECEPTACLE
- ⊖ JUNCTION BOX
- ⊖ DATA CONNECTION
- ▲ TELEPHONE LINE
- ⊖ SWITCH

ELECTRICAL SPECIFICATIONS

The Village Market
1.5.2017

Elec	Item #	Description
E-1		Refrigerated/Freezer Case Connections See RS Schedule for electrical requirements See specification for connection location
E-2		Convenience Outlet 115v, Single Phase, 15 Amps Locate 12" AFF
E-3		Convenience Outlet 115v, Single Phase, 15 Amps Locate Under Counter
E-4		Scanner/Scale POS System 115v, single phase, 15 amps (Power for Misc) *Power for registers to be dedicated circuit Split "J" box for Dataport and power Verify power requirements with owner Locate in floor
E-5		Dataport Locate Under Counter
E-6	D-24	Hot Bar & Soup 208v, Single Phase, 37.46 Amps Locate in floor
E-7	M-2	Meat Saw 208v, Three Phase, 3 HP Locate 54" AFF
E-8	M-8	Wrapper 115v, Single Phase, 6.5 Amps Locate 48" AFF
E-9		Convenience Outlet 115v, Single Phase, 15 Amps Locate 48" AFF
E-10	M-4	Table Top Grinder 208v, Three Phase, 1.5 HP Locate 48" AFF
E-11		Walk-in Cooler Evap Coils See Refrigeration Schedule Locate all power at 84" AFF
E-12		Walk-in Lights Lights are supplied by box manufacturer. Electrical contractor is to wire.
E-13		Light Switch Switch is supplied by box manufacturer. Electrical contractor is to wire to lights.
E-14	Dy-3	Reach-in Cooler Doors [6 Doors] 115v, Single Phase, 15 Amps Locate 96" AFF and daisy link the door frames
E-15	D-5	Slicer 120v, Single Phase, 5.4 Amps Locate 48" AFF
E-16	D-20	Refrigerated Prep Table 115v, Single Phase, 8.6 Amps Locate 12" AFF
E-17		Convenience Outlet 115v, Single Phase, 15 Amps Locate in floor & flex to outlet mounted under overshef
E-18		Exhaust Hood Verify with exhaust mechanical drawings for lights, make-up air, and exhaust fan on roof
E-19	D-19	Range Convection Oven 120v, Single Phase, 6 Amps Locate 24" AFF
E-20	D-18	Combi Oven 120v, Single Phase, 6.8 Amps Locate 36" AFF
E-21	D-17	Fryer 120v, Single Phase, 12 Amps Locate 24" AFF
E-22	D-13	Refrigerated Worktop 115v, Single Phase, 8.5 Amps Locate in floor & flex outlet to leg of adjacent stainless table
E-23	D-14	Panini Grill 208v, Single Phase, 12 Amps Locate in floor & flex to outlet mounted under adjacent table overshef
E-24		Dataport Port comes on refrigerate case. Electrical contractor to wire
E-25	D-25	Scale/Printer 115v, Single Phase, 5 Amps [Dedicated Circuit] Case comes with outlet built into case. Electrical contractor to wire.
E-26	Sm-7	Under Counter Freezer 115v, Single Phase, 5 Amps Locate under counter
E-27	Sm-5	Smoothie Blenders 120v, Single Phase, 15 Amps Locate under counter
E-28	Sm-6	Under Counter Ice Machine 115v, Single Phase, 6 Amps Locate under counter
E-29	Sm-10	Coffee Brewer 120v, Single Phase, 25 Amps Locate under counter
E-30	Sm-14	Hot Water Dispenser 120v, Single Phase, 15 Amps Locate under counter
E-31	B-1	Self Serve Pastry Case 115v, Single Phase, 5 Amps [Lights] Locate 36" AFF
E-32		Telephone Locate under counter
E-33		Telephone Locate 50" AFF
E-34		Telephone Locate 48" AFF
E-35		Phone 115v, Single Phase, 5 Amps Locate 60" AFF



Phillips Enterprises, Inc.
Design, Consulting & Project Management
www.foodmarkdesigns.com

CONTACT:

PROJECT MANAGER: DAN PHILLIPS
(425-894-9335)
DESIGNED BY: TOM PHILLIPS
(206-940-4849)
DRAWN BY: TIM PHILLIPS
(360-222-2363)

221 2ND STREET, #3
LANGLEY, WA 98260

PROJECT:

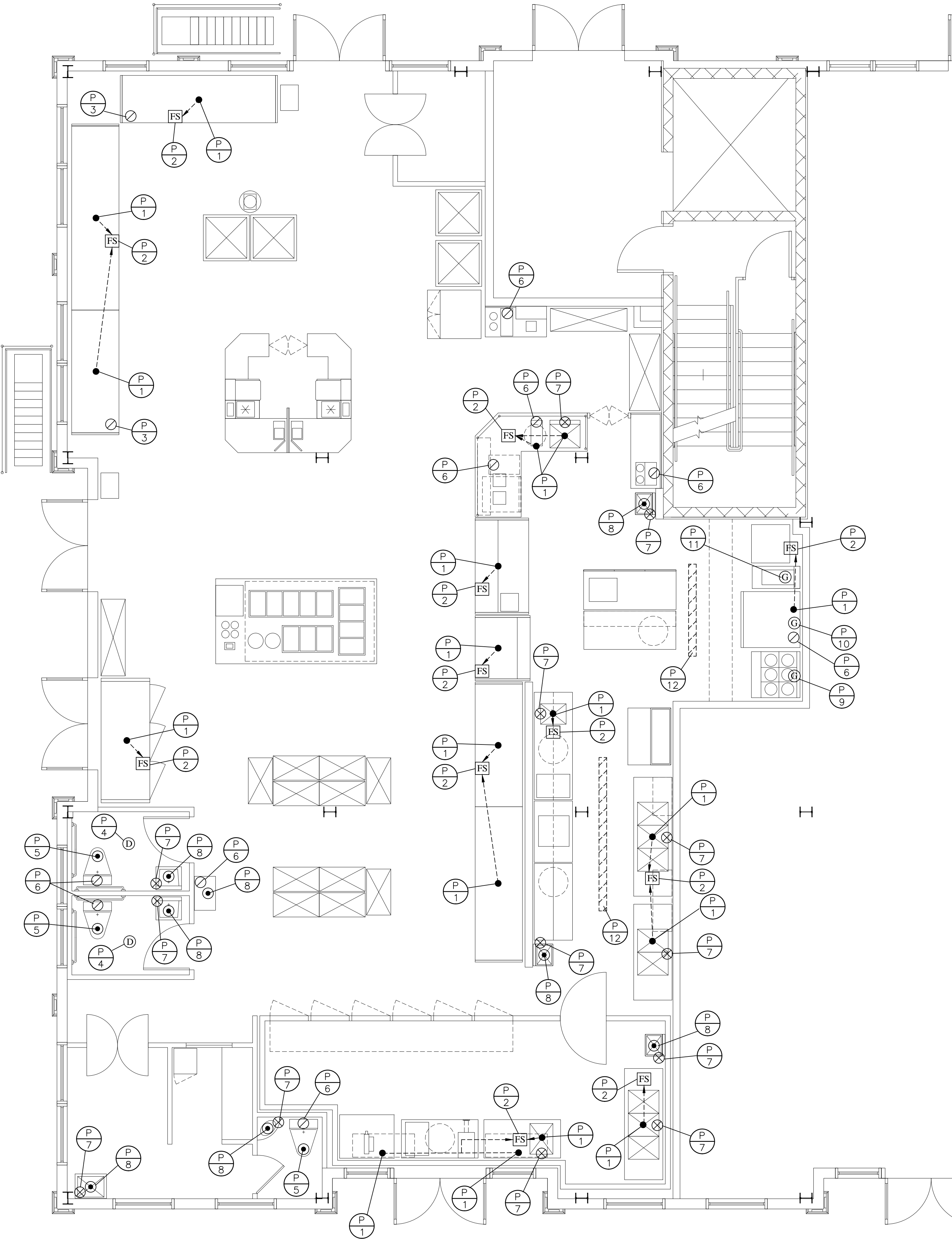
THE VILLAGE MARKET
NEW JERSEY

DATE: 1.6.2017

SHEET:

SCALE: 1/4" = 1'

F4.0



PLUMBING NOTES

1. Plumber/Engineer is responsible for plumbing to all locations and connections of equipment. Refrigeration contractor responsible for refrigeration piping.
2. Plumber/Engineer is to design and install distribution and waste systems and be responsible for all piping sizes.
3. All work is to be installed as per plan and in accordance with all local governing codes.
4. Plumber/Engineer is to provide necessary water, gas, or drains for connection of all HVAC equipment where applicable.
5. Plumbing numbers shown denote plumbing locations for equipment. Actual locations are to be verified by plumber.
6. Field verify all locations.
7. Plumber/Engineer is responsible for all applicable permits.
8. Floor sinks under reach-in refrigerated and frozen cases for condensate water drainage are accessible via a removable toe-kick plate. Typical hub-style drains may be used, depending on local code and to be determined by Plumber/Engineer in accordance with local code requirements.

PLUMBING LEGEND	
	PLUMBING SPEC. CALLOUT
	FLOOR SINK
	DRAIN
	DRAIN CONNECTION
	DIRECT WASTE
	HOT/COLD SUPPLY
	COLD WATER SUPPLY
	GAS CONNECTION

PLUMBING SPECIFICATIONS

Plum	Item #	Description
P-1		Equipment drain line Drain line from sink or equipment to floor sink/hub drain by plumbing contractor Refrigeration contractor responsible for all refrigeration case and evap coil condensate drain connections
P-2		Floor Sink [Indirect Waste]
P-3	P-1	Cold water supply with shutoff valve Plumbing contractor to connect water from supply to quick connect on case Locate supply at floor
P-4		2" drain for bathroom wash down
P-5		Waste for water closet and urinal
P-6		Cold water supply with shutoff valve
P-7		Hot & cold water supply with shutoff valve
P-8		Waste drain [Direct Waste]
P-9	D-19	Gas supply with shutoff valve for range/oven 245,000 BTU's Plumbing contractor to install connection Locate 24" AFF
P-10	D-18	Gas supply with shutoff valve for combi oven 98,000 BTU's Plumbing contractor to install connection Locate 48" AFF
P-11	D-17	Gas supply with shutoff valve for fryer 85,000 BTU's Plumbing contractor to install connection Locate 24" AFF
P-12		Trench drain Located in deli prep. Verify length on plans. All steel grates



Phillips Enterprises, Inc.
Design, Consulting & Project Management
www.foodmarkdesigns.com

CONTACT:

PROJECT MANAGER: DAN PHILLIPS
(425-894-9335)
DESIGNED BY: TOM PHILLIPS
(206-940-4849)
DRAWN BY: TIM PHILLIPS
(360-222-2363)

221 2ND STREET, #3
LANGLEY, WA 98260

PROJECT:

THE VILLAGE MARKET
NEW JERSEY

DATE: 1.6.2017

SHEET:

SCALE: 1/4" = 1'

F5.0

Customer	Phillips Enterprises, Inc.	Appl Eng	Meadows, Conner	Quote	704897	Sales Order		Order Lineup	1
Store	The Village Market	Rev Date		Quote Rev	0	Order Rev		Order Position	1
Location	Montville, New Jersey US	Draw Ref						BPCS Item	na

Physical Information				Rack Discharge Component Information				Rack Liquid Component Information				Electrical Information			
Rack Model	TZ300-012-VC-3-DSPC-A	Discharge Header Size	1 3/8	Condenser Return Connection Size	7/8	Rack MCA	208/60/3	56.3	0.0	0.0	<input checked="" type="checkbox"/> The image cannot be displayed. Your computer may not have enough memory to open the image, or the image may have been corrupted. Restart your computer, and then open the file again. If the red x still appears, you may have to delete the image and then insert it again.				
Rack Refrigerant	R407A	Oil Separator Model	S-5390	Drop Leg Shut Off Valve Model	A-17464	Rack MOPD	60/60/3	70	0	0					
Rack Dimensions (D x H x W)	43.875 x 51.56 x 116	Discharge Check Valve Model	A17940	Drop Leg Check Valve Model	ACK-14	Condenser MCA (not from rack)	60/60/3	20.0							
Est. Rack Lift Weight (lb)	1,623	Discharge Pressure Regulator Model	None	Drop Leg Reg Valve Model	A61-1.125-1.125	Condenser MOPD (nd. from rack)	60/60/3	35							
Est. Rack Operating Weight (lb)	1,700	Hot water HR Valve Model	None	Liquid Filter/Drier Shell Model	C-969-G										
Rack Vibration Isolation	(8) Pads 323 x 6	Hot Water HR Supply Connection Size	None	Liquid Filter/Drier Core Model	(4) RCW-48 Gold										
Receiver Style	H	Hot Water HR Return Connection Size	None	Liquid Supply Sightglass Model	A18120										
Receiver Dimensions (DxL)	8.63 x 36	Comfort HR Valve Model	None	Liquid Control Valve Model	None	Rack Control Voltage	208								
Receiver Insulation	(0.060) Insul Sheet 1/2	Comfort HR Supply Connection Size	None	Liquid Shut Off Valve Model	A-17465	Condenser Control Voltage	208								
Receiver Pump-Down * (lb)	70	Comfort HR Return Connection Size	None	Condenser to Rack Line Size	7/8										
*% Full @ 90°F Liquid	90%	Split Condenser Valve Model	None			Compressor Controller	CPC Einstein 2 RX-100 W LCD								
Outdoor Design Dry Bulb °F	+95.0	Condenser Supply Connection Size	1 3/8			Defrost Controller	CPC Einstein 2 RX-100 W LCD								
Outdoor Design Wet Bulb °F	+78.0	Rack to Condenser Line Size	7/8			Condenser Controller	CPC Einstein 2 RX-100 W LCD								
Max. Indoor Design Dry Bulb °F	+75.0					Controller in Remote Panel									
Max. Indoor design HR%	55%														

Condenser Information																							
Model	FPI	TD	Net Weight Each	Ship Weight Each	Fan Qty Each	Sections Wide	Size Each	FLA Each	MCA Each	MOPD Each	Power Each (Watt)	THR/TD	Alt Cor THR/TD	Relay Board in CBox	Rack to Condenser Line Size	Condenser to Rack Line Size	Motor RPM	Water Inlet Temp	Water GPM Min	Water GPM Max	Water GPM Req'd	Water Press Drop (psi)	
DSP-00310	10	13.4	820		2	1	80 x 60	14.0	20.0	35	3,846	11,704	11,695	None	7/8	7/8	1,175						

Suction Group Performance Information																											
Suction Group	Suction Temp	Cond Temp Target	Liquid Temp Lvg	Evap Load (Btuh)	Comp Gross (Btuh)	Natural Subcool (Btuh)	Mech Subcool (Btuh)	Suction Line (Btuh)	NRE (Btuh)	Excess Btuh (%)	Comp Power (Watt)	Comp THR (Btuh)	THR Factor	HR Avail (Btuh)	Comp HP Total	RLA Total	Suction Accumulator	Suction Filter Shell	CCH Amp	HCF Amp	Subcooler Model	Subcooler EPR	SC TXV 1	SC TXV 2	SC EEV	SC EEV Solenoid	SC EEV Solenoid Coil
A1	+20.0	+110.0	+70.0	94,828	92,236	0	22,081	-6,263	108,054	13.9%	13,242	157,241	1.70	78,620	12	51.6	None	BTAS-313SV	1.01	0.00	SC 3	Port-3-7	EBFVE-A-C	None	None	None	None
Total		+110.0		94,828	92,236	0	22,081	-6,263	108,054	13.9%	13,242	157,241	1.70	78,620	12	51.6											

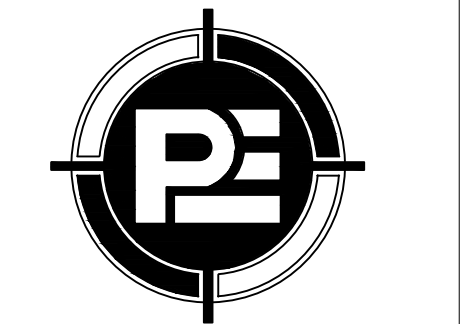
Compressor Information																		
Number	Suction Group	Model	HP	NRE	Watt	THR	RLA	LRA	Contactor	Circuit Breaker	Wire Size	Unloader	VFD	Suction Accumulator	Suction Shell	Discharge Part	CCH Amp	HCF Amp
1	A1	ZFD13KVE-TF5-261	4	36,019	4,393	52,345	18.8	123.0	C25DRF330B	QC3035H	10	Digital	None	None	None	None	0.34	None
2	A1	ZF13KVE-TF5-261	4	36,018	4,425	52,448	16.4	123.0	C25DRF330B	QC3030H	10	None	None	None	None	None	0.34	None
3	A1	ZF13KVE-TF5-261	4	36,018	4,425	52,448	16.4	123.0	C25DRF330B	QC3030H	10	None	None	None	None	None	0.34	None

Circuit Information																											
Store Circ ID	Model	Size	Description	Type	Comment	HX Model	TXV Model	Load	Evap Temp	Disc Air Temp	(Shipped Loose) Liquid Valve	(Shipped Loose) Suction Valve	Hot Gas Valve	Def Type	Def Volt	Def Amp	Def Ph	Fan Volt	Fan Amp	Fan Phase	Fan Watt	Canopy Amp	Nose Amp	Shelf Amp	Light Watt	A/S Amp	A/S Watt
A1-1	NS39S1-6	6 Feet	Deli Meat Service	NS39S	Service Deli			2,018	+20		MB6S1 3/8	Sport-II-3-7	None	Off Cycle											0.3	29	
A1-2	DN6LN-12R, DN6LN-08R	20 Feet	MD Dairy	DN6LN	Produce			23,672	+28	+33	MB6S1 3/8	Sport-II-3-9	None	Off Cycle				115		1				1.3	1.3	0.5	345
A1-3	DN6LN-06R, DN6LN-04R	10 Feet	MD Dairy	DN6LN	Produce			11,893	+28	+33	MB6S1 3/8	Sport-II-3-7	None	Off Cycle				115		1				0.7	0.7	0.5	213
A1-4	(2) ADT140AK	26' x 11' x 10'	Walk-In Cooler 6 FPI	Walk-In Cooler	Walk-In Cooler			24,000	+25		MB6S1 1/2	Sport-II-5-9	None	Off Cycle				115	10.8	1	696						
A1-5	DN6LN-06R, DN6LN-04R	10 Feet	MD Dairy	DN6LN	Grocery Deli			11,893	+28	+33	MB6S1 3/8	Sport-II-3-7	None	Off Cycle				115		1				0.7	0.7	0.5	213
A1-6	MN6LN-08R	8 Feet	MD Meat	MN6LN	Meat			11,348	+25	+31	MB6S1 3/8	Sport-II-3-7	None	Off Cycle				115		1				0.5	0.5	0.3	144
A1-7	MX1LP-04R	4 Feet	SD Meat	MX1LP	Cheese			2,004	+26	+31	MB6S1 3/8	Sport-II-3-7	None	Off Cycle				115		1				0.3		29	
A1-8	Unknown	10 ft back to back salad bar	Unknown	SSB-DS	Salad Bar			8,000	+24		MB6S1 3/8	Sport-II-3-7	None	Off Cycle													

Revisions				Additional Notes									
Note	Description	Date	By										
				NO Unit Coolers or Case fans, lights, anti-sweats powered from rack.									
				Rack has loop connection.									
				Ship Loose Ball Valves, Solenoids, and EPR's provided by KW to be field installed by Installing Contractor									
				No Disconnect quoted									

CONDENSING UNIT CIRCUITS																												
Store Circ ID	Model	Size	Description	Type	Comment	HX Model	TXV Model	Load	Cond Unit Load	Evap Temp	Disc Air Temp	Liquid Valve	Suction Valve	Hot Gas Valve	Def Type	Def Volt	Def Amp	Def Ph	Fan Volt	Fan Amp	Fan Phase	Fan Watt	Canopy Amp	Nose Amp	Shelf Amp	Light Watt	A/S Amp	A/S Watt
B1-1	Unknown	3 Doors	Unknown Frzn Food	RVLC30	Frozen Food			3,100	3,348	-16		MB6S1 3/8		None	Electric													

Revisions				Additional Notes									
Note	Description	Date	By										
				THE CIRCUIT ABOVE IS ON A SINGLE CONDENSING UNIT									



Phillips Enterprises, Inc.
Design, Consulting & Project Management
www.coolmarketdesign.com

CONTACT:

PROJECT MANAGER: DAN PHILLIPS
(425-894-9335)
DESIGNED BY: TOM PHILLIPS
(206-940-4849)
DRAWN BY: TIM PHILLIPS
(360-222-2363)

221 2ND STREET, #3
LANGLEY, WA 98260

PROJECT:

THE VILLAGE MARKET
NEW JERSEY

DATE: 1.6.2017

SHEET:

SCALE: 1/4" = 1'

F6.0

WALK-IN COOLERS & FREEZERS PLAN



Phillips Enterprises, Inc.
Design, Consulting & Project Management
www.foodmarkdesigns.com

CONTACT:

PROJECT MANAGER: DAN PHILLIPS
(425-894-9335)
DESIGNED BY: TOM PHILLIPS
(206-940-4849)
DRAWN BY: TIM PHILLIPS
(360-222-2363)

221 2ND STREET, #3
LANGLEY, WA 98260

PROJECT:

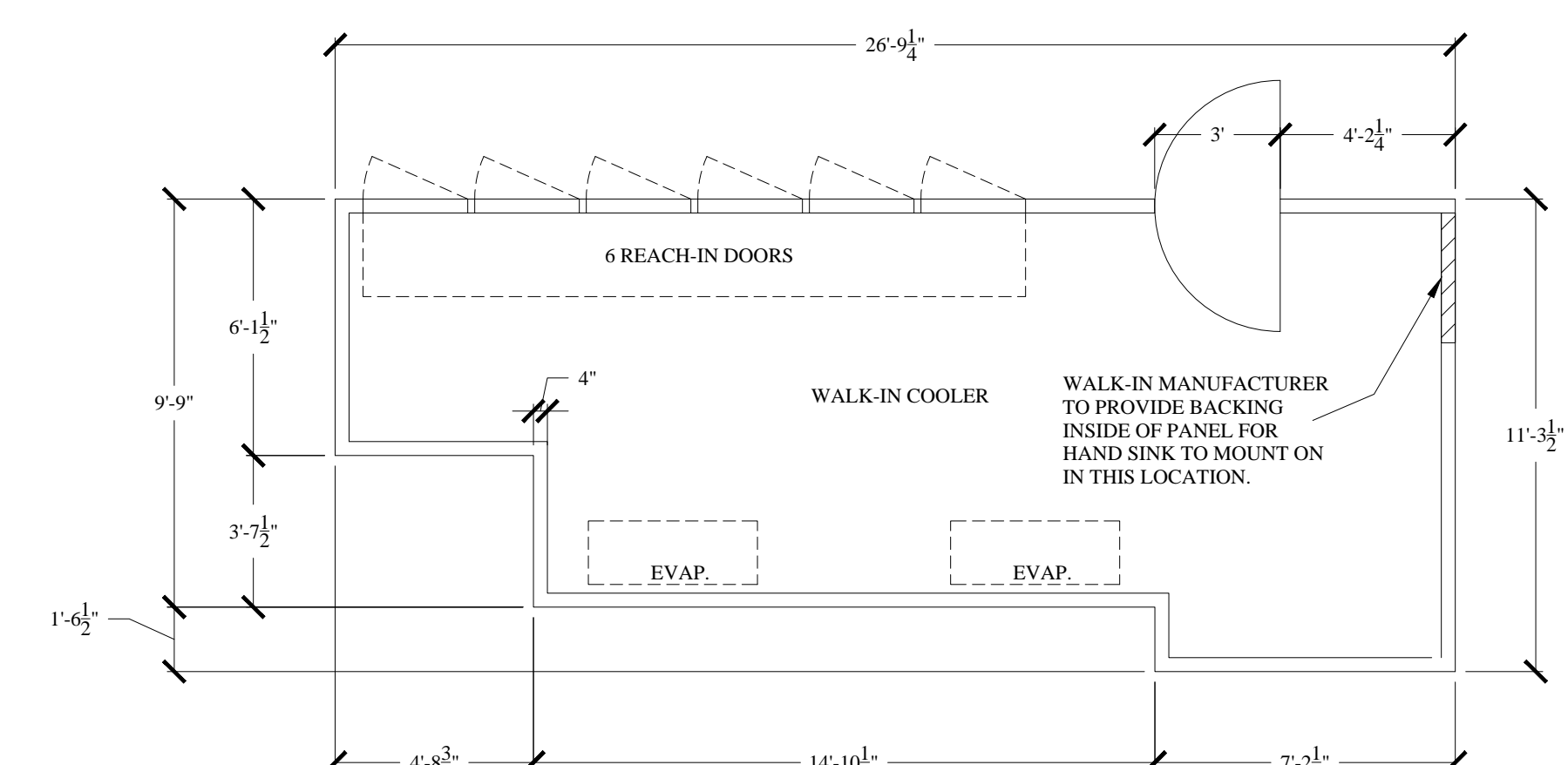
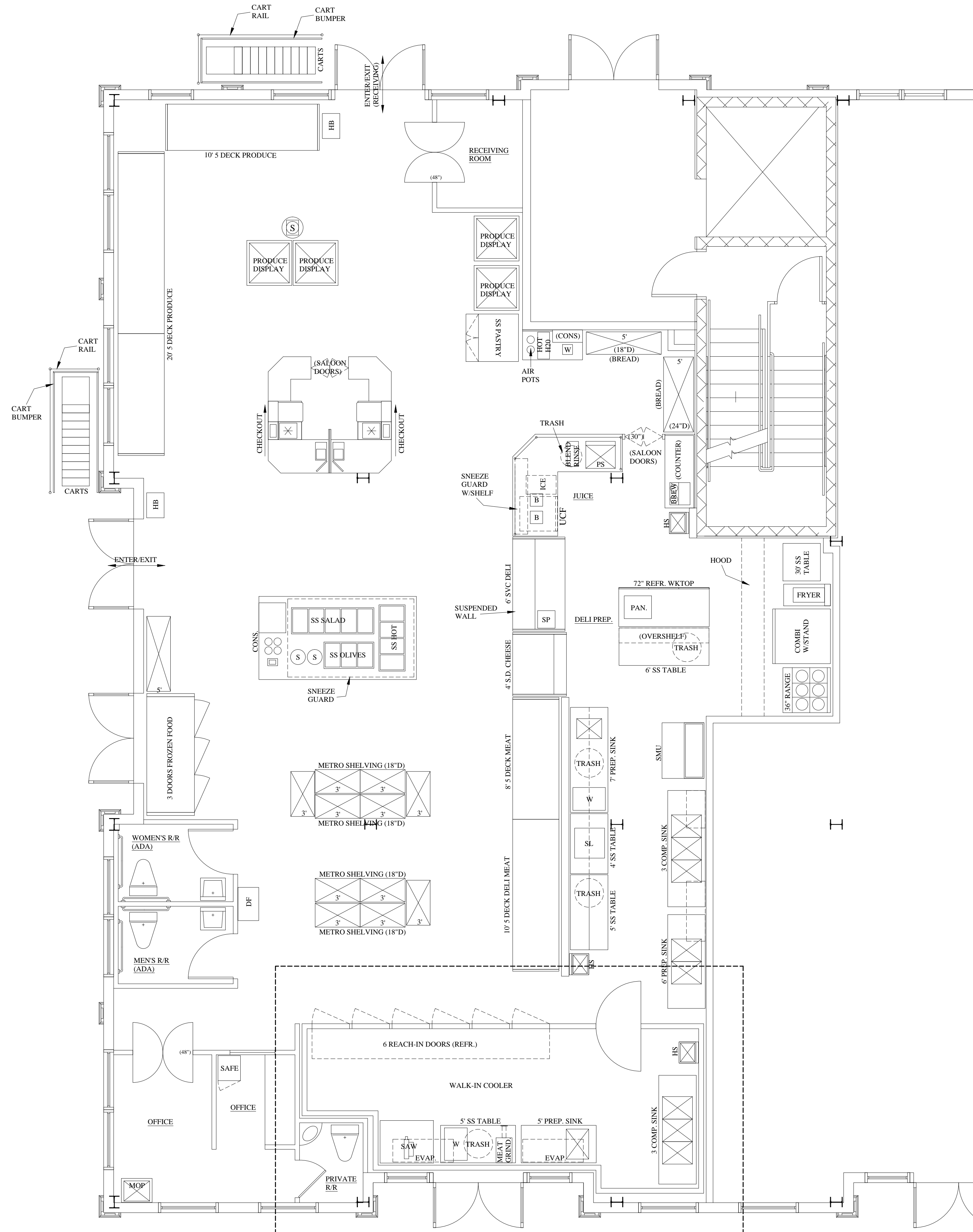
THE VILLAGE MARKET
NEW JERSEY

DATE: 1.6.2017

SHEET:

SCALE: 1/4" = 1'

F7.0



WALK-IN DETAIL
1/4" = 1' SCALE