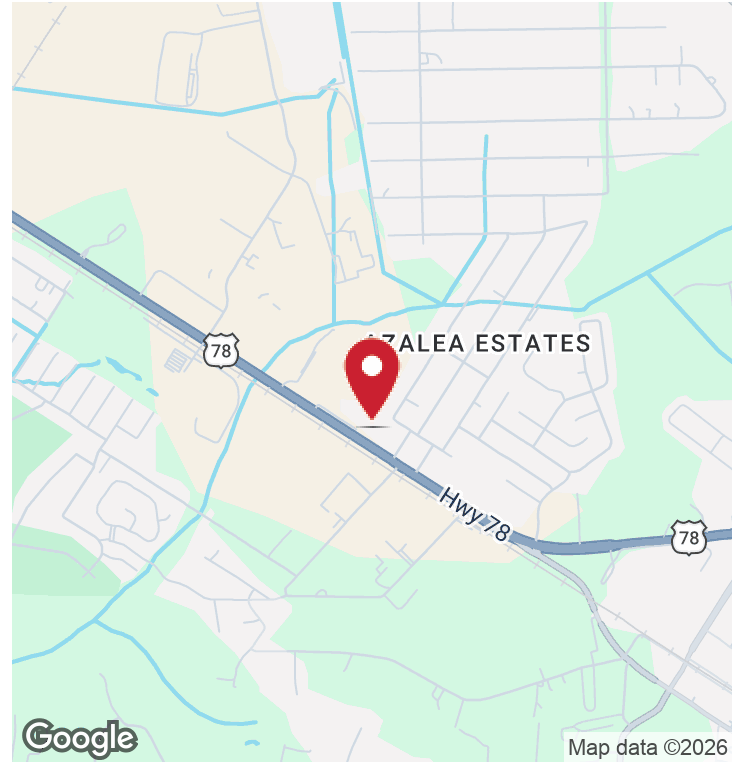
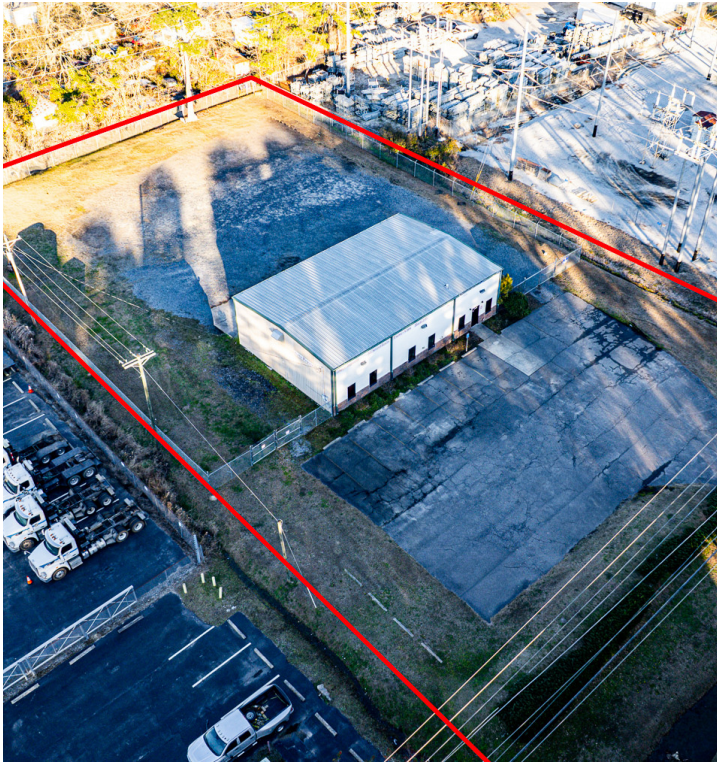


Executive Summary



OFFERING SUMMARY

Sale Price:	\$619,999
Building Size:	2,814 SF
Available SF:	
Lot Size:	39,732 SF
Price / SF:	\$220.33
Year Built:	2006
Zoning:	CLI

PROPERTY OVERVIEW

Discover an exceptional opportunity for retail/vehicle-related investment with this prime property located in the thriving Summerville area. Boasting a 2,814 SF building constructed in 2006 and zoned CLI, the property offers ample space for retail or vehicle-related businesses to thrive. With its strategic position in Summerville, this property provides excellent visibility and access, making it an ideal location for a range of retail or vehicle-related ventures. Whether you are seeking to establish, expand, or relocate your business, this property presents a compelling investment opportunity in a dynamic and growing commercial market.

PROPERTY HIGHLIGHTS

- 2,814 SF building
- Built in 2006
- Zoned CLI
- Located in Summerville
- Ideal for retail or vehicle-related businesses
- Excellent visibility
- Strategic location

Bradham Wilder

t: 803.309.4709

e: bradham@erawilderrealty.com

Additional Photos



Bradham Wilder

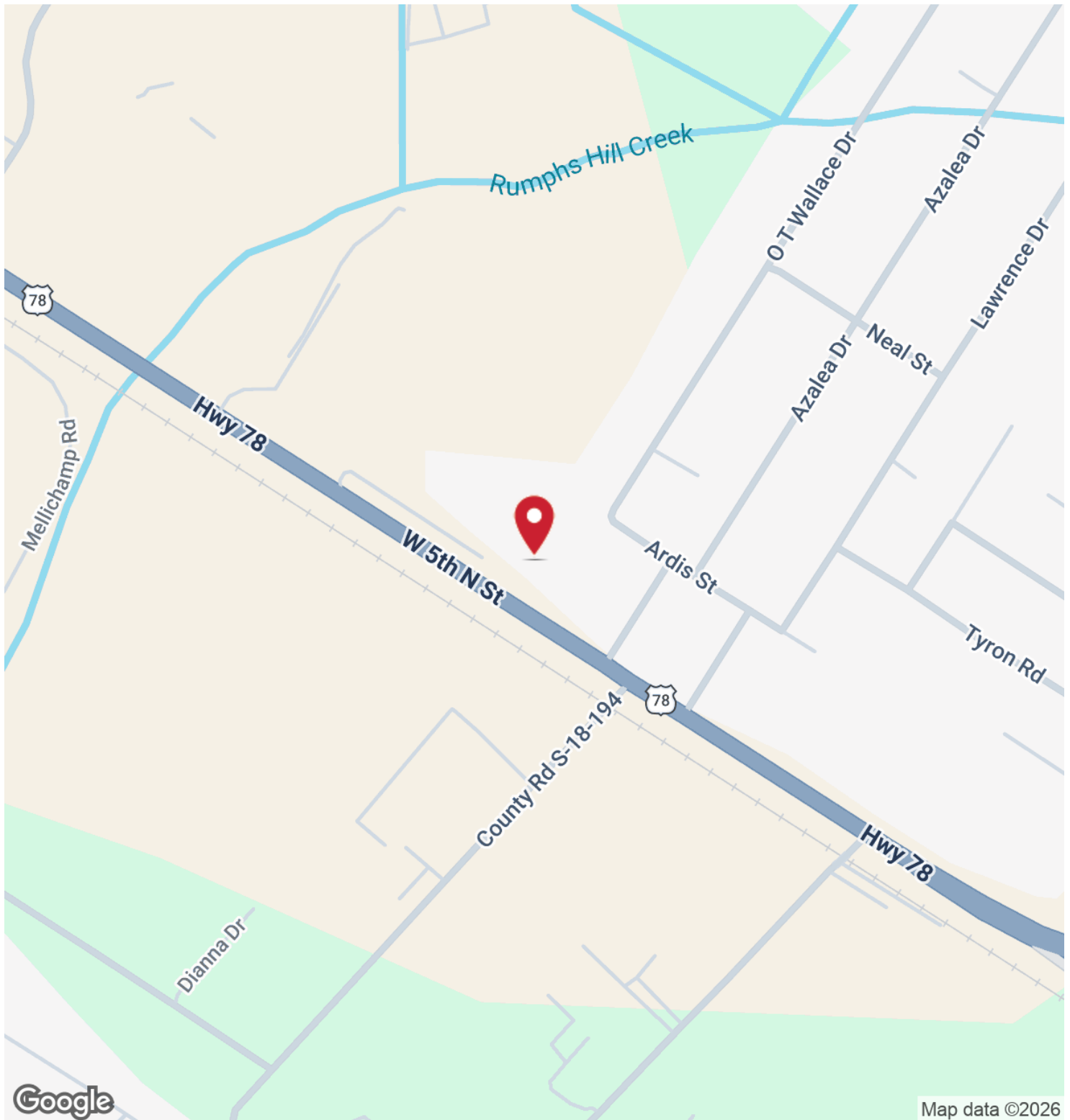
t: 803.309.4709

e: bradham@erawilderrealty.com

Wilder Commercial | wildercommercial.com | 109 Old Rapids Rd, Columbia, SC 29072 | 803.309.4709



Location Map

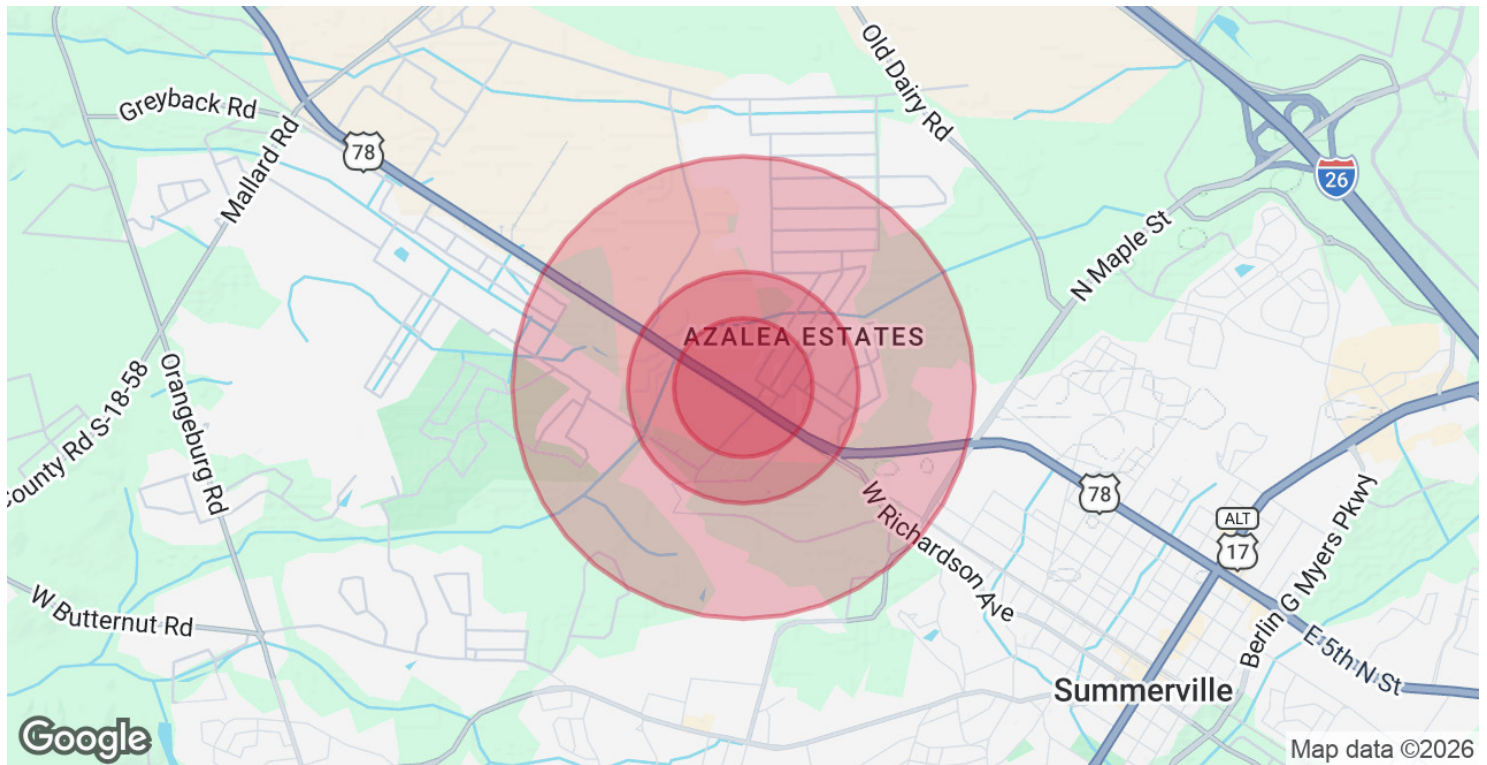


Bradham Wilder

t: 803.309.4709

e: bradham@erawilderrealty.com

Demographics Map & Report



POPULATION

0.3 MILES

0.5 MILES

1 MILE

Total Population	206	836	3,955
Average Age	37	37	39
Average Age (Male)	36	36	38
Average Age (Female)	37	38	40

HOUSEHOLDS & INCOME

0.3 MILES

0.5 MILES

1 MILE

Total Households	70	287	1,370
# of Persons per HH	2.9	2.9	2.9
Average HH Income	\$104,641	\$106,864	\$118,590
Average House Value	\$336,738	\$349,412	\$374,638

Demographics data derived from AlphaMap

Bradham Wilder

t: 803.309.4709

e: bradham@erawilderrealty.com