

FOR SALE

±8,178 SF INDUSTRIAL CONDO

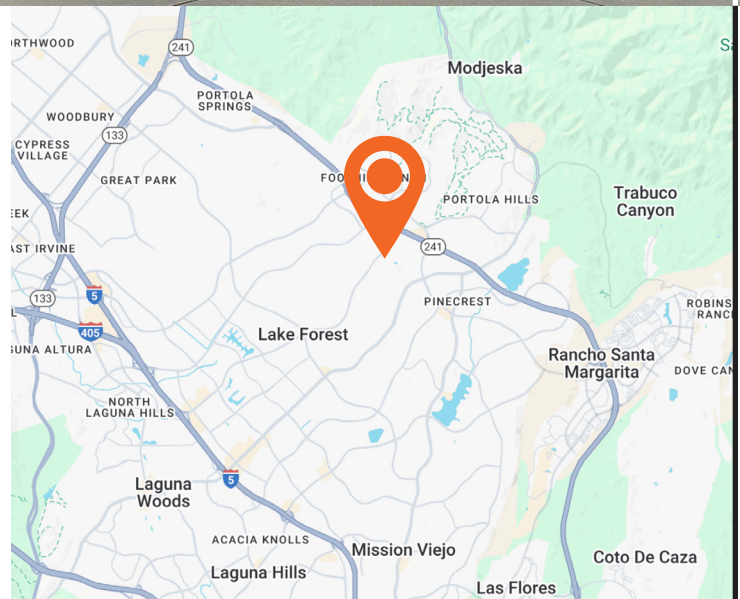


26792 VISTA TERRACE

LAKE FOREST, CA 92630

PROPERTY HIGHLIGHTS

- ±3,600 SF Two-Story Office
- ±4,578 SF of Warehouse
- Parking: 3:1 Ratio
- Power: 400 Amp, 120/208V Panel
- Loading: (2) Grade Level 12' x 14' Doors
- Clear Height: 24' Minimum
- Fire Sprinklered
- Upgraded Lighting Throughout
- Polished Concrete Floors
- Glass Offices & Conference Room
- Lot of Natural Light



LEE & ASSOCIATES
COMMERCIAL REAL ESTATE SERVICES

ORANGE COUNTY
COMMERCIAL REAL ESTATE GROUP

BROCK STRYKER
Senior Vice President
CalDRE 01928271
949.790.3131
bstryker@leeirvine.com

GUY LAFERRARA
Senior Vice President
CalDRE 01012355
949.790.3115
glaferrara@leeirvine.com

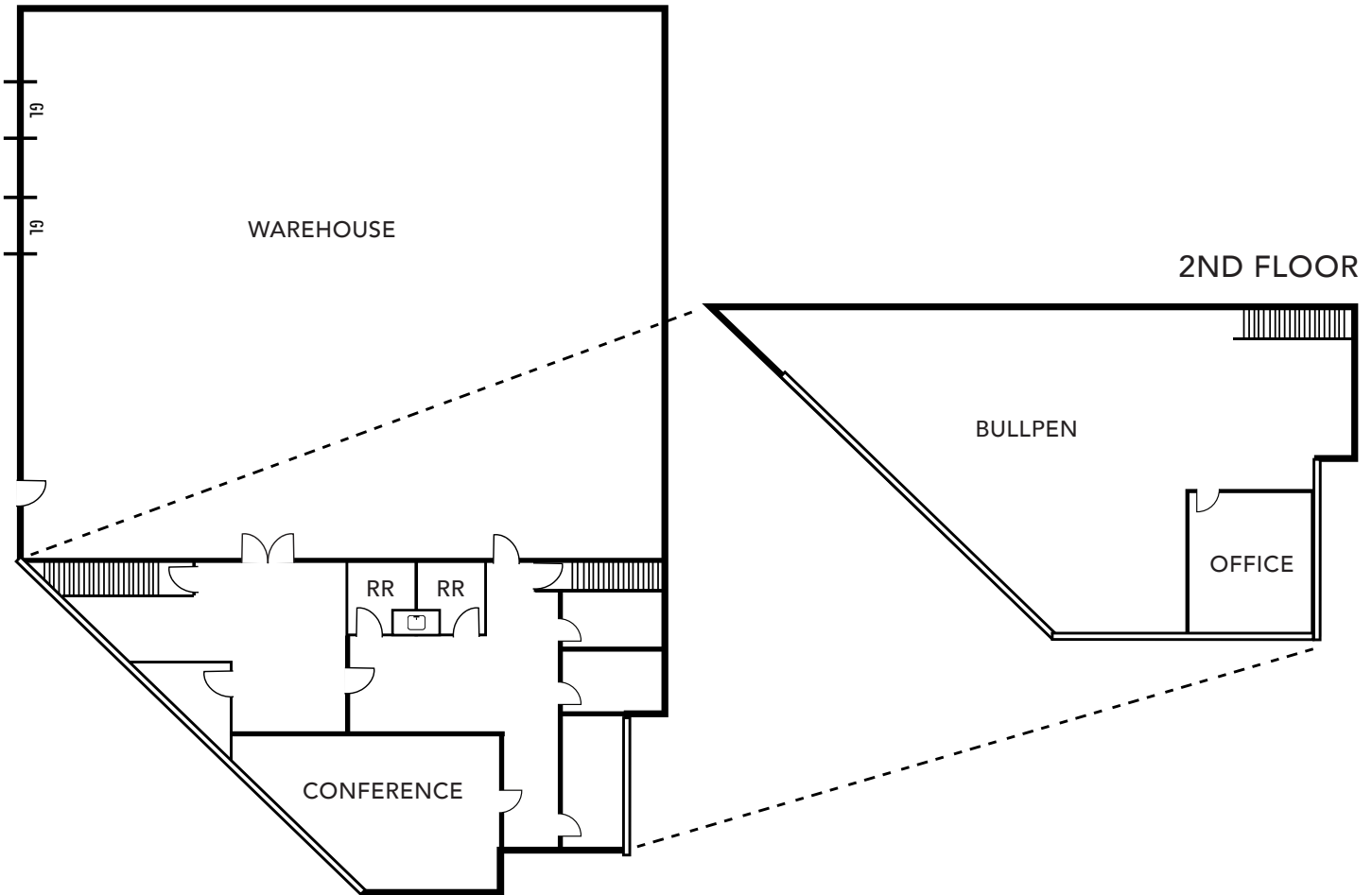
TRAVIS BARNETT
Associate
CalDRE 02069500
949.790.3145
tbarnett@leeirvine.com

VISTA TERRACE BUSINESS PARK

26792 VISTA TERRACE, LAKE FOREST

FLOOR PLAN

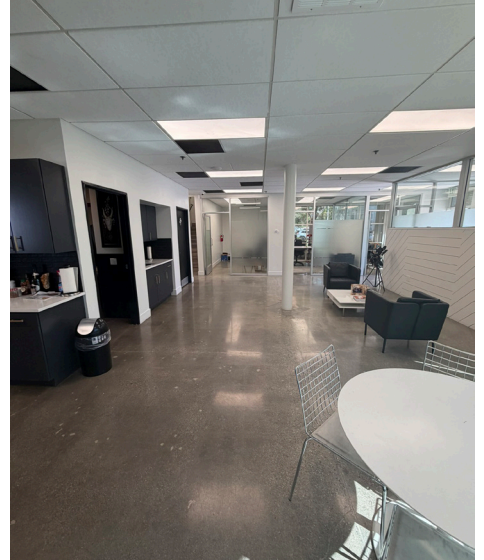
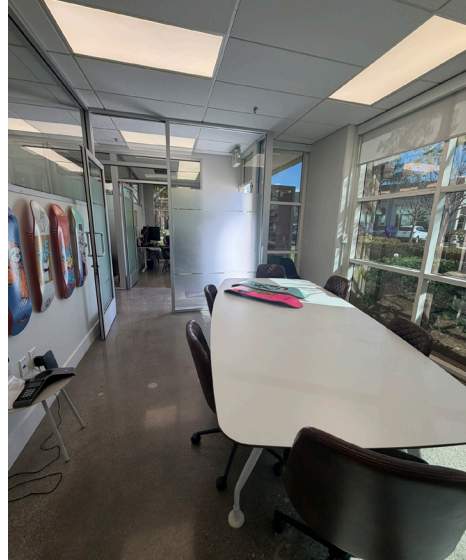
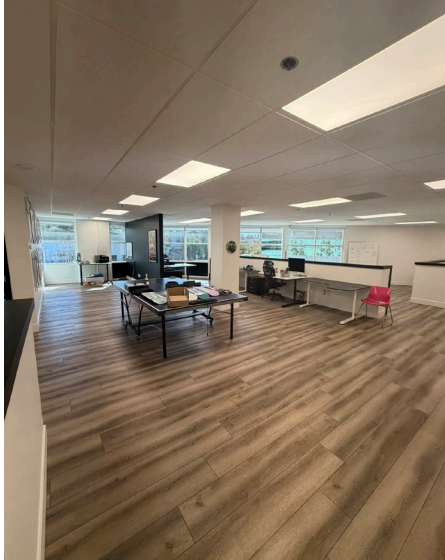
1ST FLOOR



*Floorplan not to scale.

VISTA TERRACE BUSINESS PARK

26792 VISTA TERRACE, LAKE FOREST



LEE & ASSOCIATES
COMMERCIAL REAL ESTATE SERVICES

ORANGE COUNTY
COMMERCIAL REAL ESTATE GROUP

BROCK STRYKER
Senior Vice President
CalDRE 01928271
949.790.3131
bstryker@leeirvine.com

GUY LAFERRARA
Senior Vice President
CalDRE 01012355
949.790.3115
glaferrara@leeirvine.com

TRAVIS BARNETT
Associate
CalDRE 02069500
949.790.3145
tbarnett@leeirvine.com