

# FOR SALE

## UP TO 16.5 ACRES

Plantation Rd | Mobile, AL





# FOR SALE

5460-5480 Plantation Road | Mobile, AL

## LOT SIZES

LOT 5: 4.5± AC

LOT 6: 4.8± AC

LOT 7: 4.9± AC

LOT 10: 2.3± AC

*\*Lots are available individually or together*

## ZONING

I-1 : Light Industrial

## SITE CONDITION

Cleared flat lots with all utilities

## BEST USE

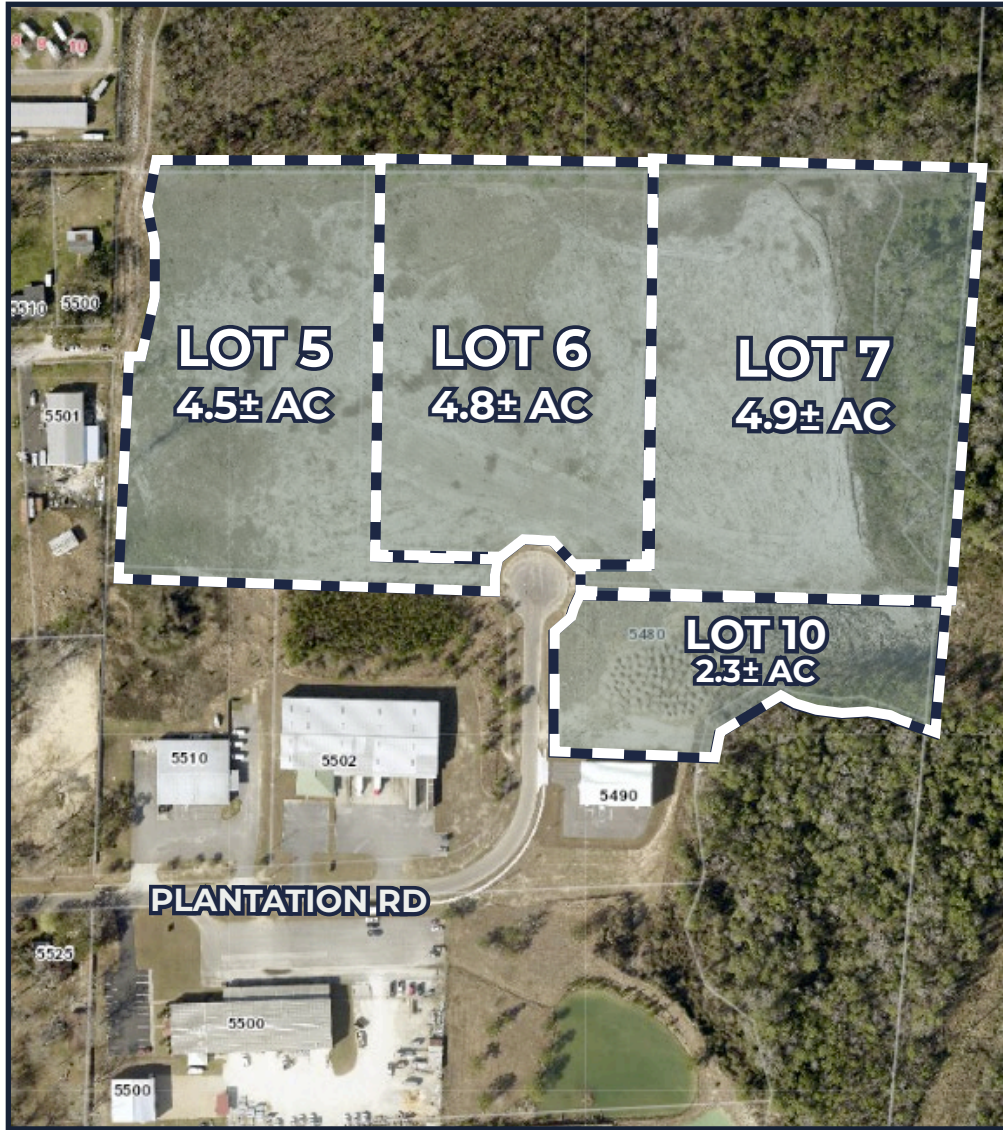
Prime industrial development site  
or laydown yard

## ACCESS

Lighted access from Highway 90

## SALES PRICE

\$300,000-640,000 (\$3.00 PSF)



## LOCATION ADVANTAGES

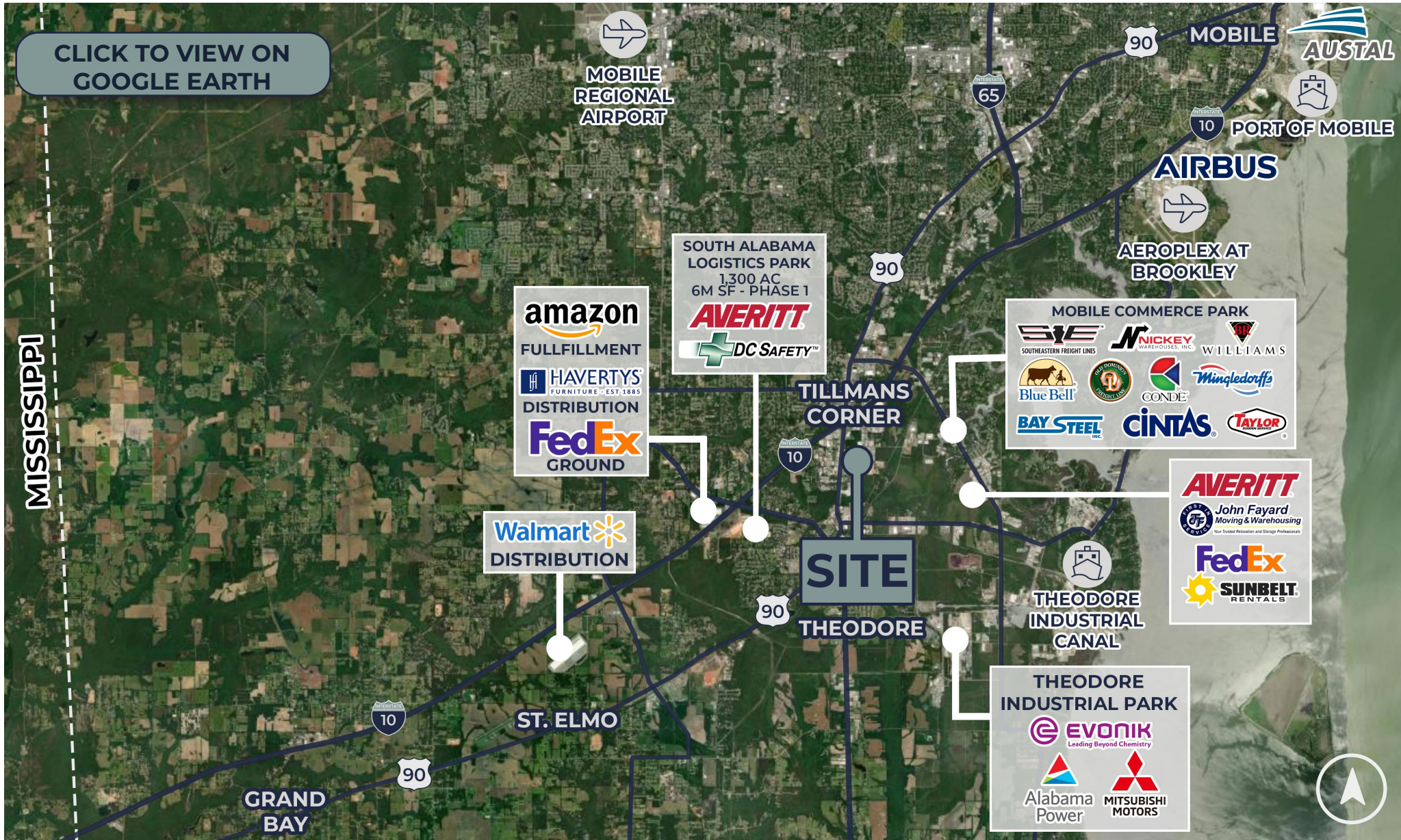
### Central Location

Conveniently located less than two minutes from I-10 right off HWY 90. Convenient to the Port of Mobile & all distribution & manufacturing areas.

### Desired Corridor

Located in Tillman's Corner along the booming I-10 corridor full of industrial, retail, office & restaurants.





NO WARRANTY OR REPRESENTATION, EXPRESS OR IMPLIED, IS MADE AS TO THE ACCURACY OF THE INFORMATION CONTAINED HEREIN, AND THE SAME IS SUBMITTED SUBJECT TO ERRORS, OMISSIONS, CHANGE OF PRICE, RENTAL OR OTHER CONDITIONS, PRIOR SALE, LEASE OR FINANCING, OR WITHDRAWAL WITHOUT NOTICE, AND OF ANY SPECIAL LISTING CONDITIONS IMPOSED BY OUR PRINCIPALS. NO WARRANTIES OR REPRESENTATIONS ARE MADE AS TO THE CONDITION OF THE PROPERTY NOR ANY HAZARDS CONTAINED THEREIN ARE ANY TO BE IMPLIED.