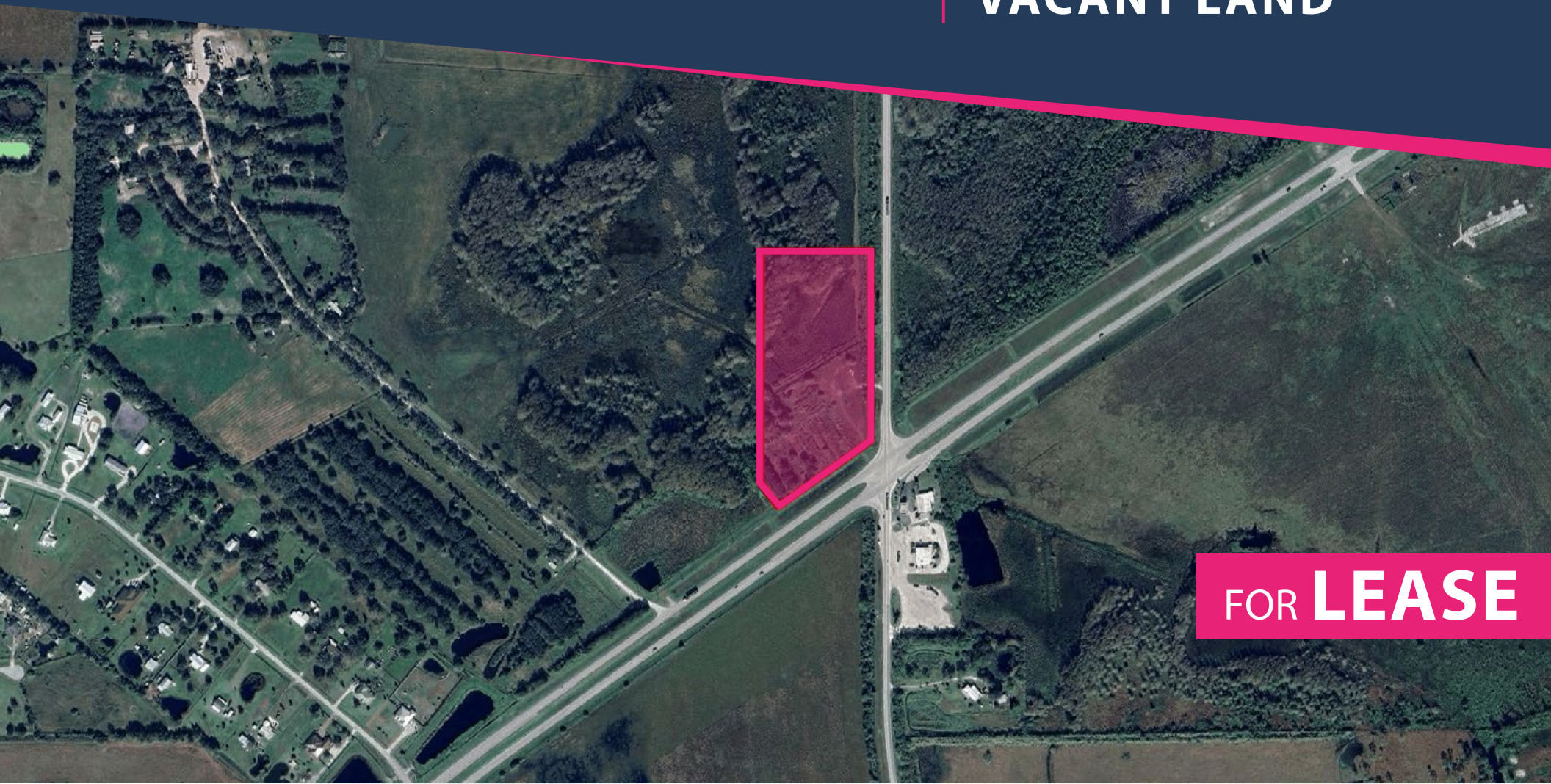


5225 NE 128th Ave, Okeechobee, FL 34972

HEAVY COMMERCIAL
VACANT LAND



FOR **LEASE**



LAUREN VINAYA
Sales Associate
O: 772.223.3646 C: 772.486.8336
E: lauren@florida-commercial.net

10 ACRES

309 SE Osceola Street #104 • Stuart, FL 34994 • 772.223.3646 • florida-commercial.net

©Florida Commercial 2021 • This offering is subject to errors, prior to sale/lease, withdrawal, or change in price, terms or conditions without notice.

EXECUTIVE SUMMARY

5225 NE 128th Ave, Okeechobee, FL 34972 | HEAVY COMMERCIAL VACANT LAND

SPECS

Lot Size: 10 Acres
Zoning: Heavy Commercial
Lease Price: \$7,800 Per Month / Gross
Term: 3-5 Years

PROPERTY OVERVIEW

Now available for lease — 10 acres of Heavy Commercial–zoned land conveniently located just off SR 70 / Okeechobee Road, one of the region’s main thoroughfares. Situated near the Marathon gas station, this site offers excellent visibility and easy access for trucks, equipment, and service vehicles.

Approximately 5 acres are stabilized with compacted gravel, ideal for heavy machinery parking, outdoor storage, or contractor operations.

With high visibility, strategic access to major roadways, and zoning that supports a wide range of commercial and industrial uses, this property is perfectly suited for businesses seeking a functional base in the growing Okeechobee market.



LAUREN VINAYA
Sales Associate
O: 772.223.3646 C: 772.486.8336
E: lauren@florida-commercial.net

10 ACRES

309 SE Osceola Street #104 • Stuart, FL 34994 • 772.223.3646 • florida-commercial.net

©Florida Commercial 2021 • This offering is subject to errors, prior to sale/lease, withdrawal, or change in price, terms or conditions without notice.

LOCATION

5225 NE 128th Ave, Okeechobee, FL 34972 | HEAVY COMMERCIAL VACANT LAND



LAUREN VINAYA
Sales Associate
O: 772.223.3646 C: 772.486.8336
E: lauren@florida-commercial.net

10 ACRES

309 SE Osceola Street #104 • Stuart, FL 34994 • 772.223.3646 • florida-commercial.net

©Florida Commercial 2021 • This offering is subject to errors, prior to sale/lease, withdrawal, or change in price, terms or conditions without notice.

MAPS & REPORT

5225 NE 128th Ave, Okeechobee, FL 34972 | HEAVY COMMERCIAL VACANT LAND



POPULATION

1 MILE

3 MILES

5 MILES

Population

1,420

25,162

37,926

Median age

37.2

38.6

38.8



HOUSEHOLDS & INCOME

1 MILE

3 MILES

5 MILES

Total households

431

8,711

13,016

of persons per HH

3.3

2.9

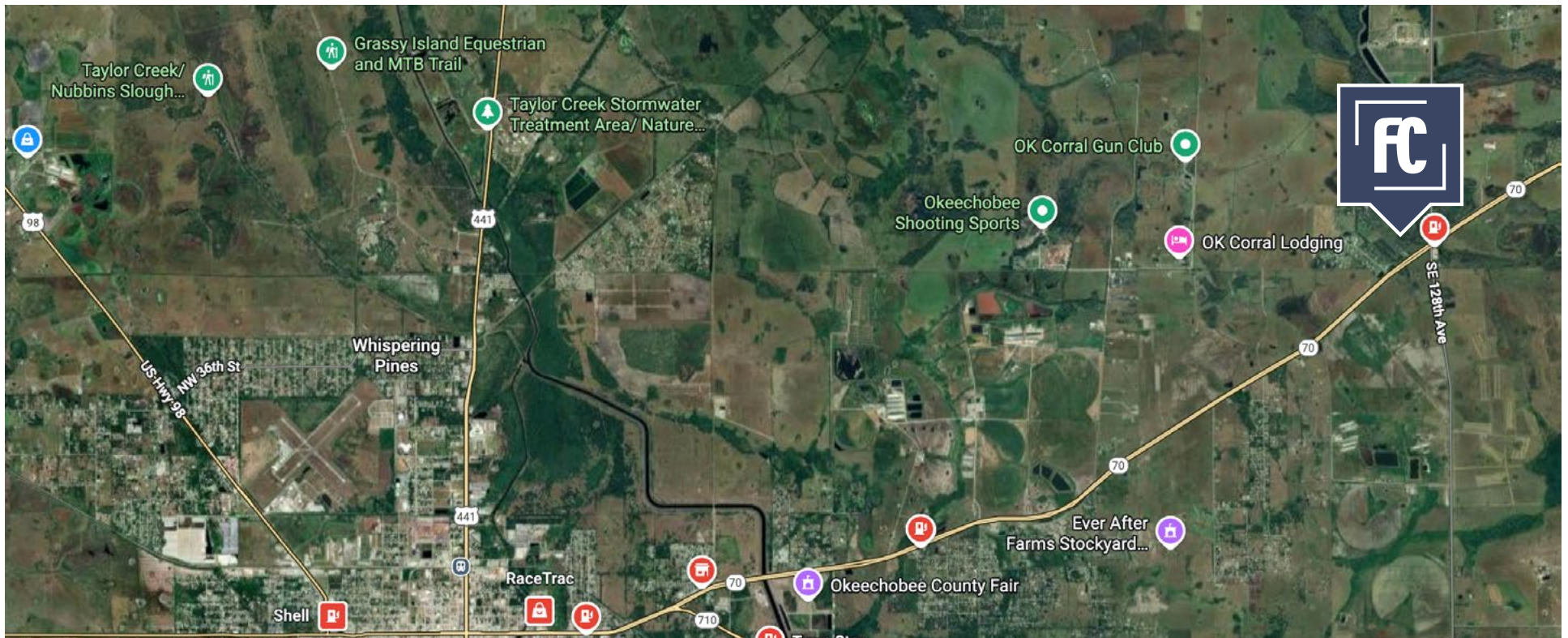
2.9

Average HH income

\$44,658

\$54,028

\$54,431



LAUREN VINAYA

Sales Associate

O: 772.223.3646 C: 772.486.8336

E: lauren@florida-commercial.net

10 ACRES

309 SE Osceola Street #104 • Stuart, FL 34994 • 772.223.3646 • florida-commercial.net

©Florida Commercial 2021 • This offering is subject to errors, prior to sale/lease, withdrawal, or change in price, terms or conditions without notice.