

5321 S. PENNSYLVANIA AVE.
LANSING, MICHIGAN

INDUSTRIAL FOR SALE
4,471 Square Feet Available



**SIGNATURE
ASSOCIATES**
KNOW SIGNATURE | KNOW RESULTS

CORNER LOCATION

PRICE REDUCED



PROPERTY FEATURES

- 4,471 total building square feet
- 3,300 square feet of open warehouse
- 1,171 square foot office
- 0.75 acres (158' X 206.7')
- Three (3) overhead doors
- 12' ceiling height
- Security system in place
- Parking for up to 25 vehicles
- Sprinklers
- Zoned F Commercial
- Built in 1976
- Sale Price: ~~\$510,400~~ \$485,000 (\$108.48/sf)



For more information, please contact:

JOE RIZQALLAH
(616) 822 6310
jrizzqallah@signatureassociates.com

DAVID MILLER
(248) 613 5192
dmiller@signatureassociates.com

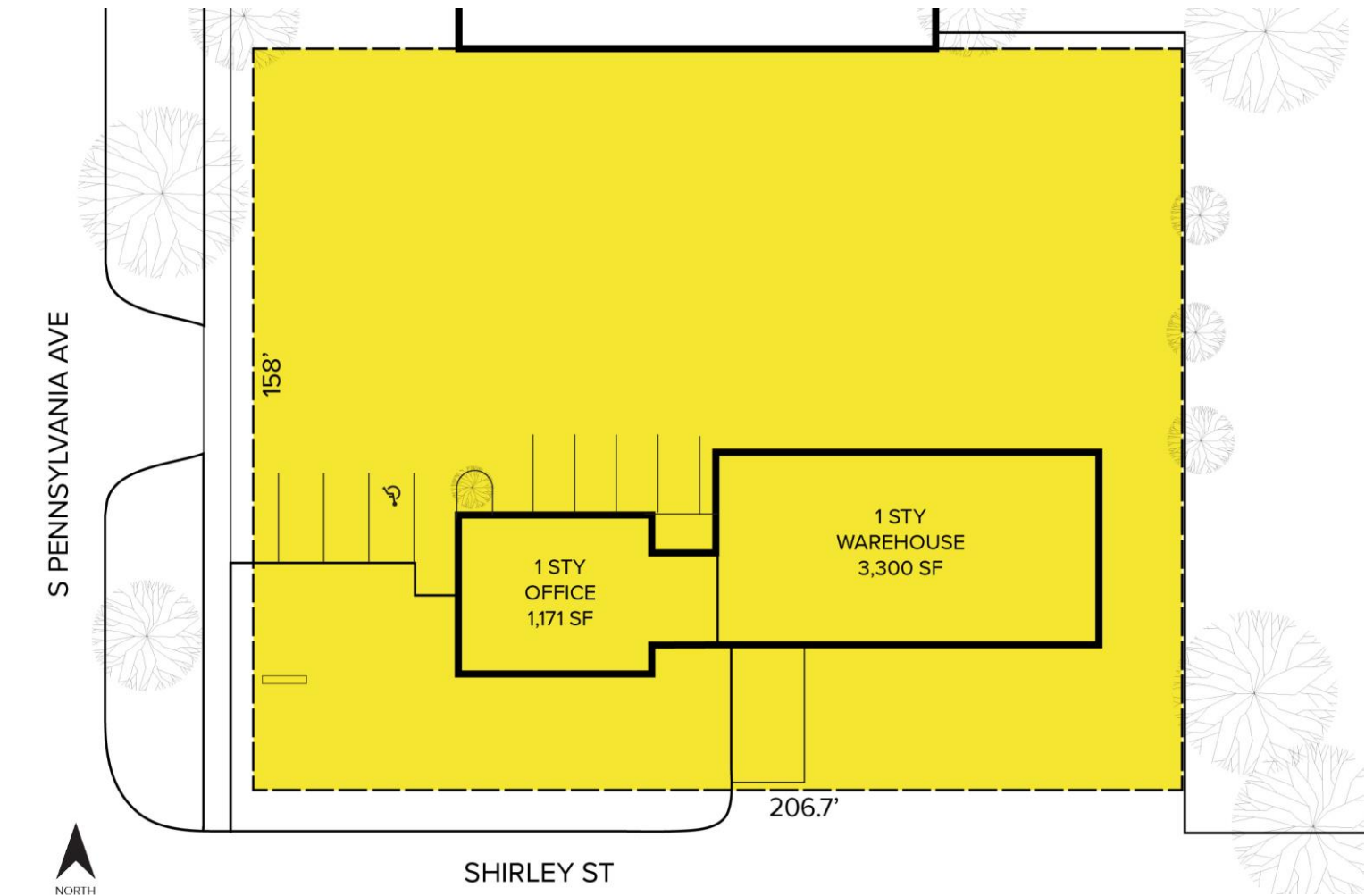
SIGNATURE ASSOCIATES
1188 East Paris Ave SE, Suite 220
Grand Rapids, MI 49546
www.signatureassociateswm.com

Information is subject to verification and no liability for errors or omissions is assumed. Price is subject to change and listing withdrawal.

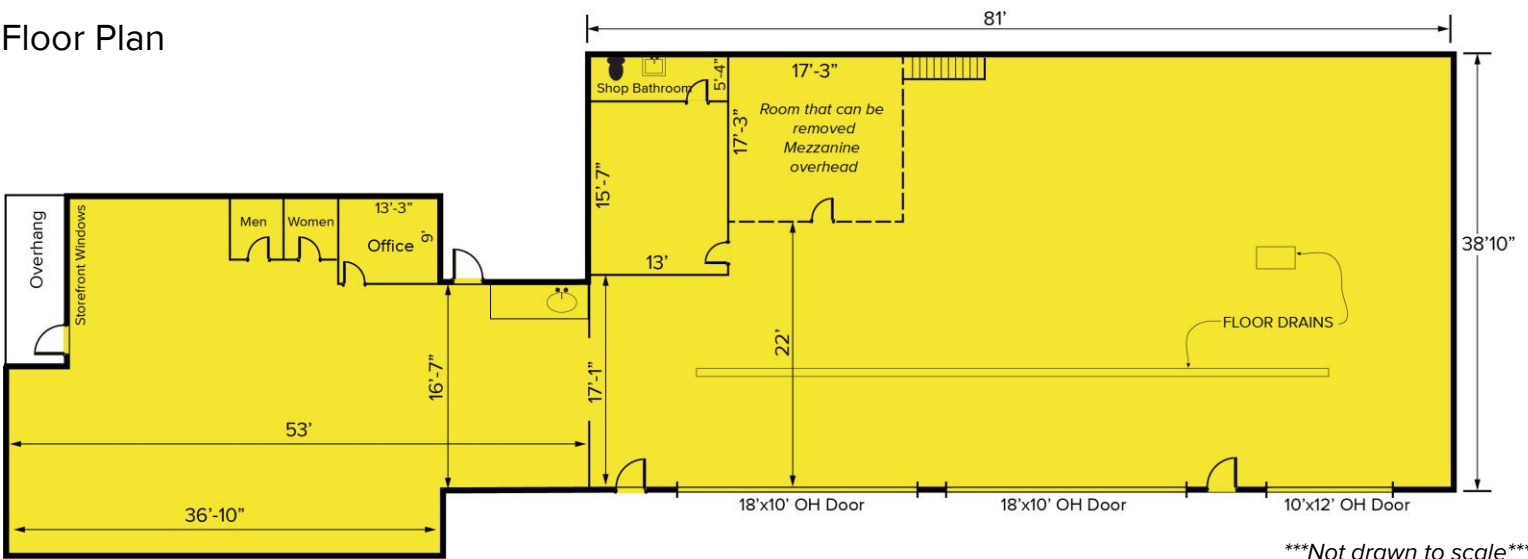
5321 S. Pennsylvania Avenue – Lansing, Michigan
Industrial For Sale

4,471
Square Feet
AVAILABLE

Site Plan



Floor Plan



Not drawn to scale

For more information, please contact:

JOE RIZQALLAH

(616) 822 6310

jrizzqallah@signatureassociates.com

DAVID MILLER

(248) 613 5192

dmiller@signatureassociates.com

SIGNATURE ASSOCIATES

1188 East Paris Ave SE, Suite 220

Grand Rapids, MI 49546

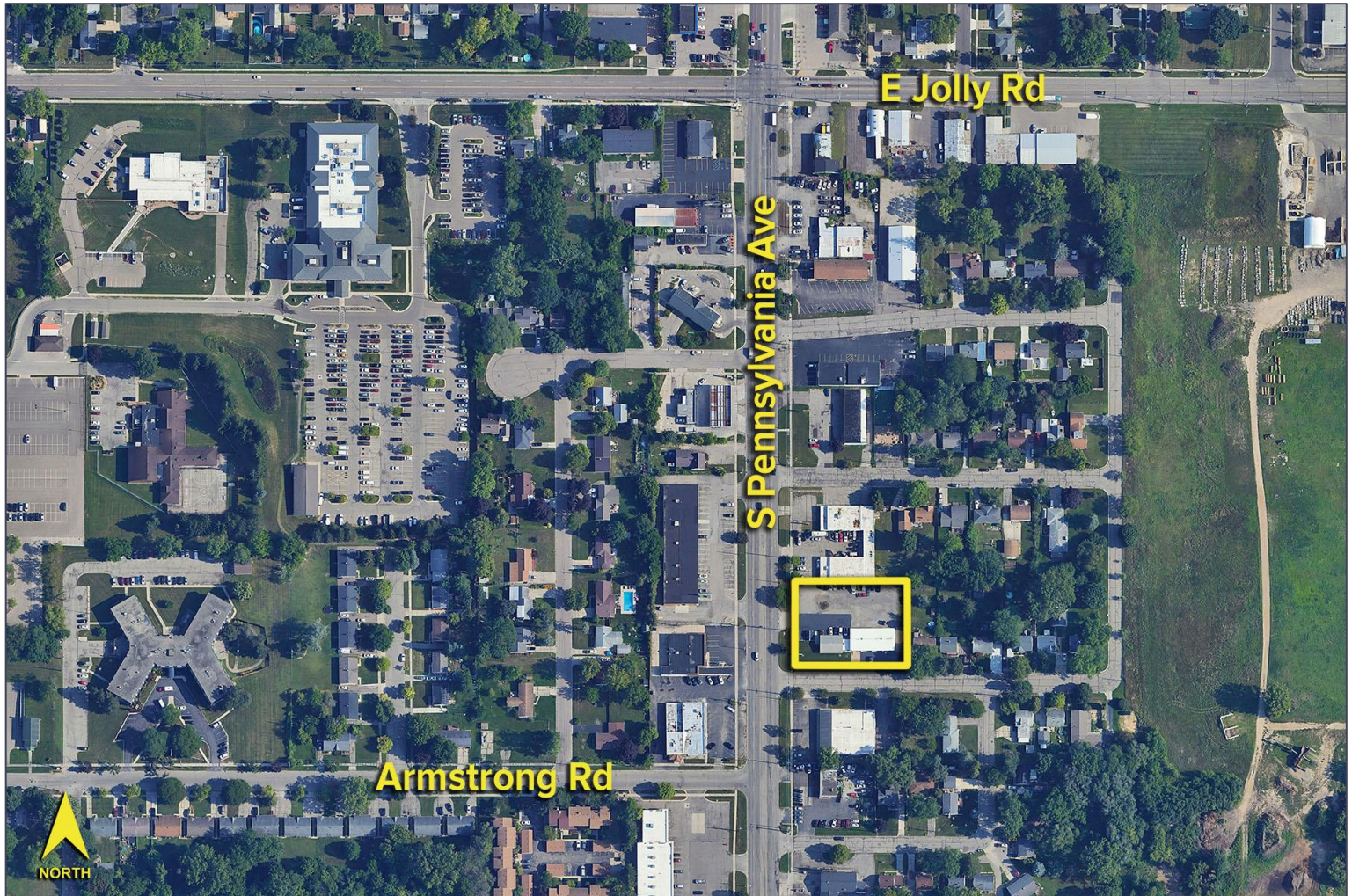
www.signatureassociateswm.com

5321 S. Pennsylvania Avenue – Lansing, Michigan

Industrial For Sale

4,471
Square Feet
AVAILABLE

Aerial



For more information, please contact:

JOE RIZQALLAH
(616) 822 6310
jrizzqallah@signatureassociates.com

DAVID MILLER
(248) 613 5192
dmiller@signatureassociates.com

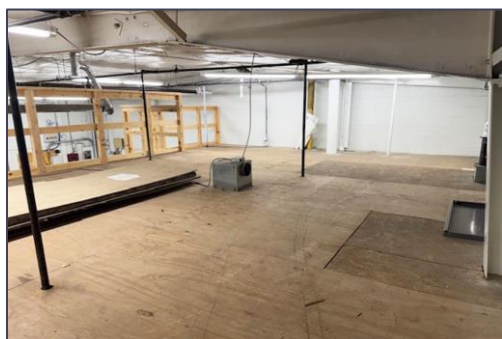
SIGNATURE ASSOCIATES
1188 East Paris Ave SE, Suite 220
Grand Rapids, MI 49546
www.signatureassociateswm.com

5321 S. Pennsylvania Avenue – Lansing, Michigan

Industrial For Sale

4,471
Square Feet
AVAILABLE

Additional Photos



For more information, please contact:

JOE RIZQALLAH

(616) 822 6310

jrizqallah@signatureassociates.com

DAVID MILLER

(248) 613 5192

dmiller@signatureassociates.com

SIGNATURE ASSOCIATES

1188 East Paris Ave SE, Suite 220

Grand Rapids, MI 49546

www.signatureassociateswm.com

Information is subject to verification and no liability for errors or omissions is assumed. Price is subject to change and listing withdrawal.