



TURN-KEY LANDSCAPE PROPERTY

11024-11026 RED LION ROAD | WHITE MARSH, MARYLAND 21162

FOR
**SALE/
LEASE**



MACKENZIE

COMMERCIAL REAL ESTATE SERVICES, LLC

PROPERTY OVERVIEW

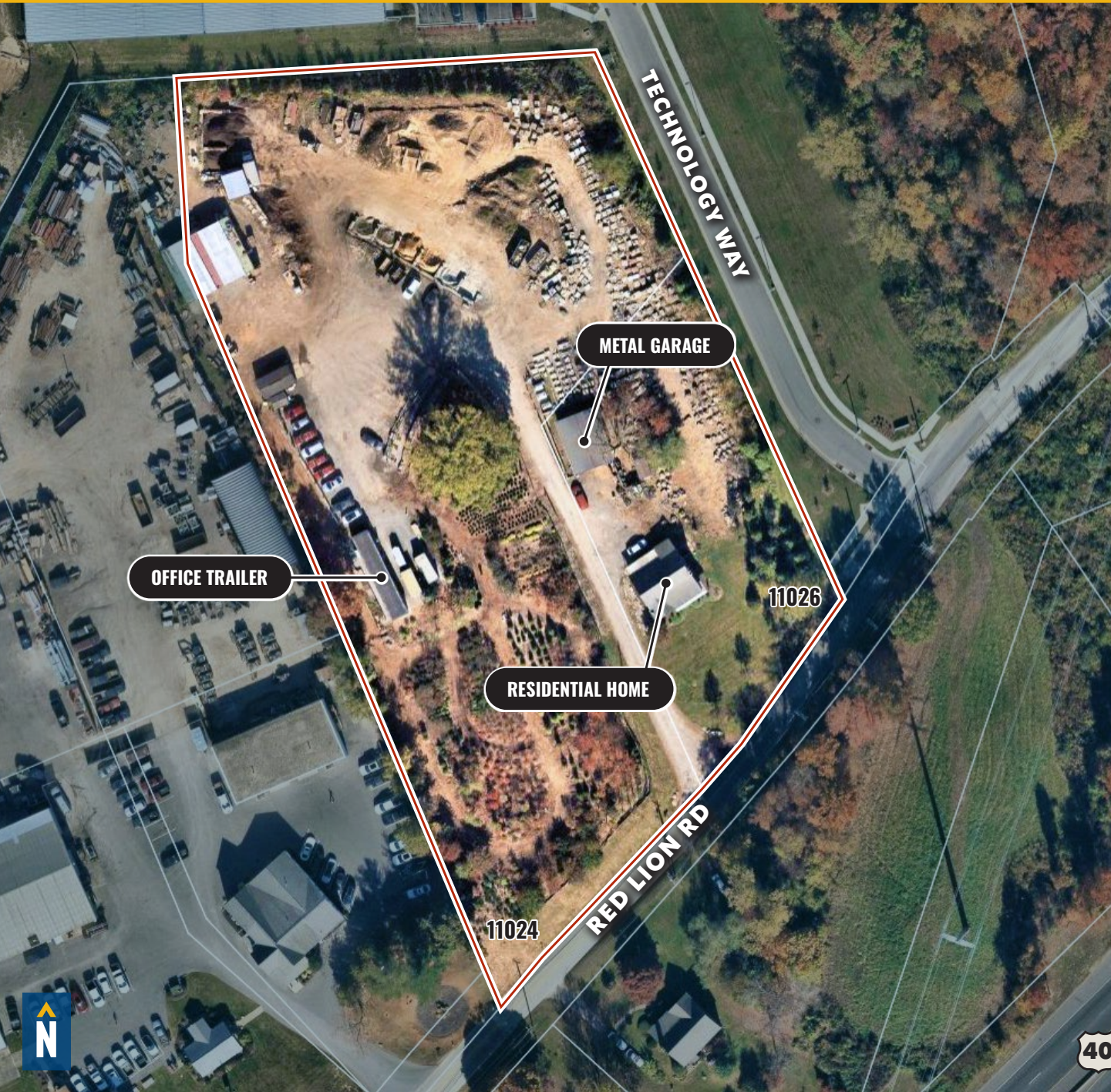
HIGHLIGHTS:

- 3.813 acres \pm of ML-zoned land
- Existing nursery
- Vehicles, equipment and inventory can be conveyed with the sale
 - » Business, vehicles, equipment and inventory information available upon request
- Favorable ML (Manufacturing Light) zoning
- Easy access to Rt. 40, Rt. 43, I-95 and I-695
- Close proximity to Downtown Baltimore and the Port of Baltimore

LOT SIZE:	3.813 ACRES \pm
HOUSE/OFFICE:	1,568 SF \pm
SHOP/GARAGE:	1,200 SF \pm
OFFICE TRAILER:	800 SF \pm
ZONING:	ML (MANUFACTURING LIGHT)



AERIAL



LOCAL BIRDSEYE



TRADE AREA

DRIVING DISTANCE TO:

40 0.5 MILES
2 MIN. DRIVE

43 1.0 MILE
3 MIN. DRIVE

95 1.9 MILES
5 MIN. DRIVE

PORT OF BALTIMORE
14.4 MILES
18 MIN. DRIVE
(SEAGIRT MARINE TERMINAL)

BWI
BALTIMORE/WASHINGTON
INTERNATIONAL
THURGOOD MARSHALL
AIRPORT
23.3 MILES
24 MIN. DRIVE

BALTIMORE, MD 13.5 MILES
22 MIN.

WASHINGTON, DC 52.2 MILES
55 MIN.

PHILADELPHIA, PA 90.9 MILES
1 HR. 25 MIN.

RICHMOND, VA 166.0 MILES
2 HRS. 30 MIN.



FOR MORE INFO CONTACT:



MATTHEW CURRAN, SIOR

SENIOR VICE PRESIDENT & PRINCIPAL

443.573.3203

MCURRAN@mackenziecommercial.com



ANDREW MEEDER, SIOR

SENIOR VICE PRESIDENT & PRINCIPAL

410.494.4881

AMEEDER@mackenziecommercial.com



DANIEL HUDAK, SIOR

SENIOR VICE PRESIDENT & PRINCIPAL

443.573.3205

DHUDAK@mackenziecommercial.com



ALTON CURRY

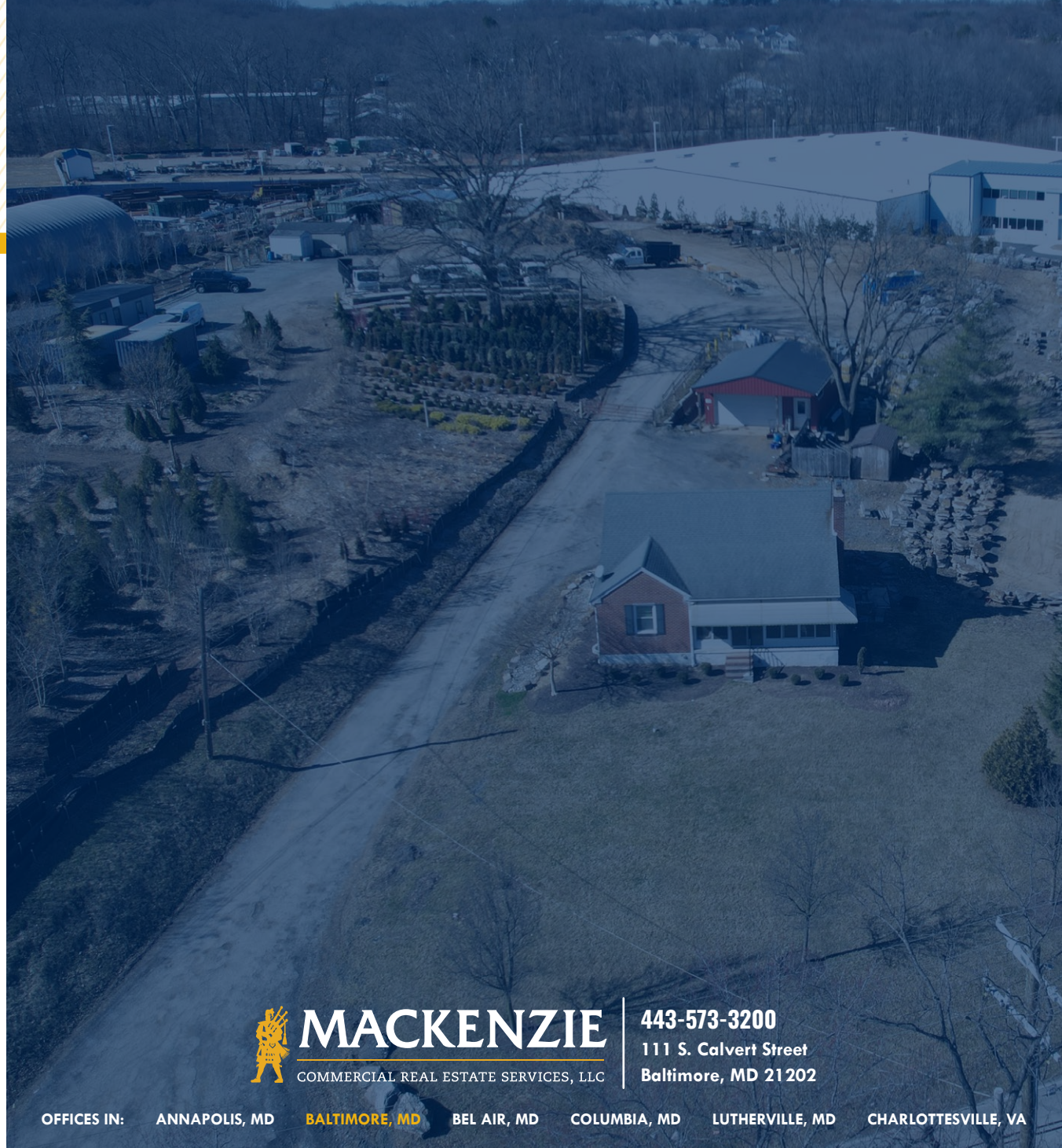
REAL ESTATE ADVISOR

443.841.9780

ACURRY@mackenziecommercial.com



VISIT **PROPERTY PAGE** FOR MORE INFORMATION.



MACKENZIE

COMMERCIAL REAL ESTATE SERVICES, LLC

443-573-3200

111 S. Calvert Street
Baltimore, MD 21202

OFFICES IN: ANNAPOLIS, MD **BALTIMORE, MD** BEL AIR, MD COLUMBIA, MD LUTHERVILLE, MD CHARLOTTESVILLE, VA

www.MACKENZIECOMMERCIAL.com

No warranty or representation, expressed or implied, is made as to the accuracy of the information contained herein, and same is submitted subject to errors, omissions, change of price, rental or other conditions, withdrawal without notice, and to any specific listing conditions imposed by our principals.