



JOHN STANLEY
&
ASSOCIATES

COMMERCIAL REAL ESTATE



3730 Malcolm Drive
Montgomery, AL 36116

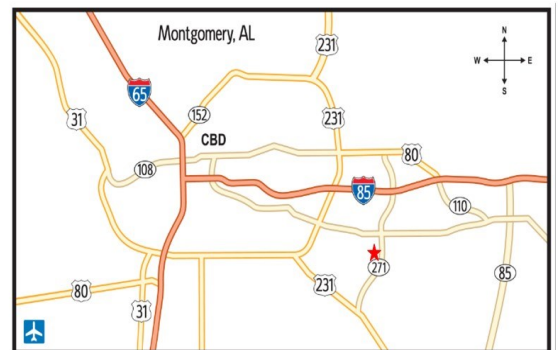
FOR SALE

- **Sale Price:** \$6.00/S.F.
- **Lot Size:** ± 32,625 S.F.
- **Zoning:** B-3
- **Accessibility:** Excellent
- **Visibility:** Excellent
- **Listing Type:** Exclusive

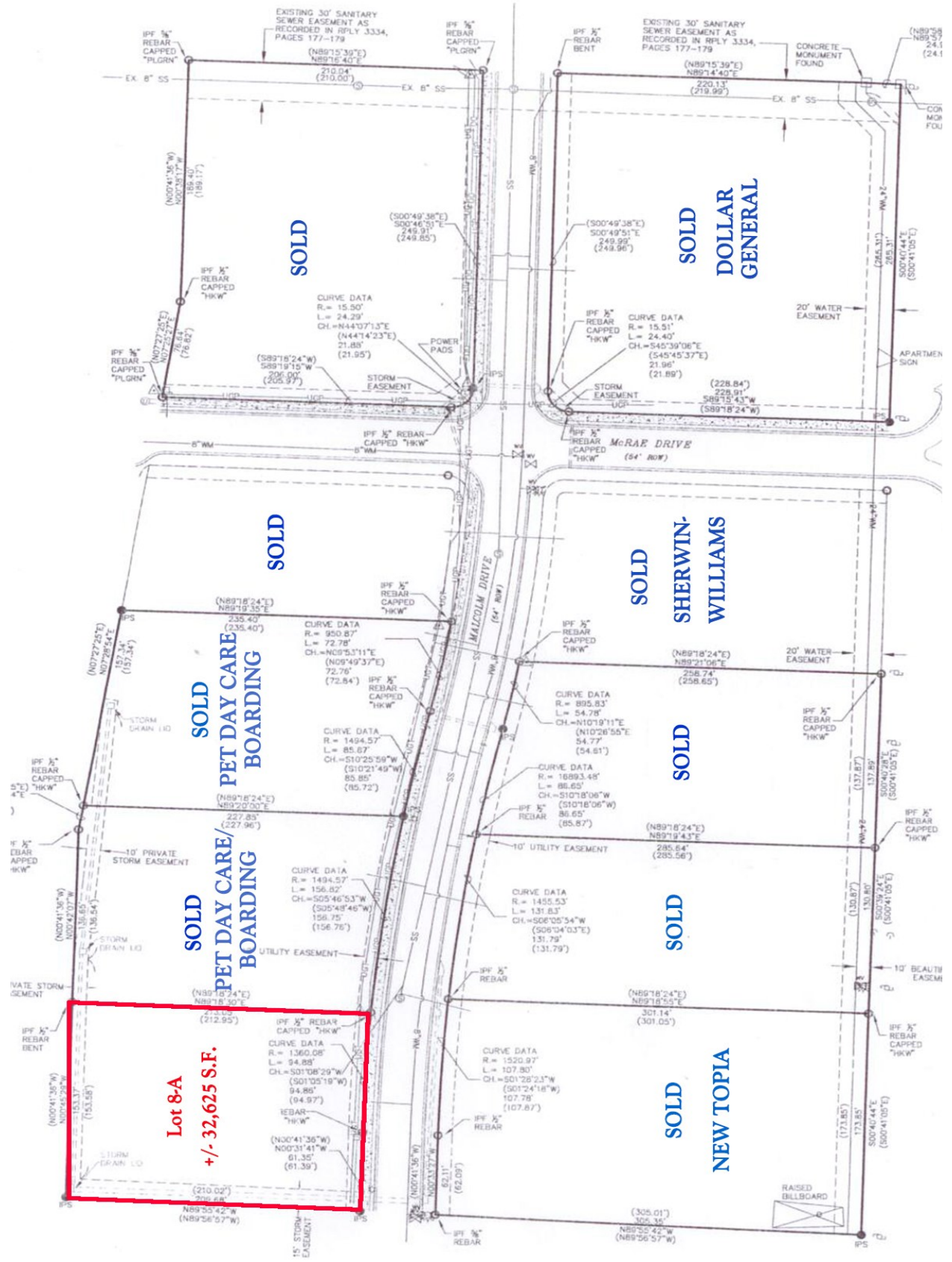
This property is located on Malcolm Drive just south of Vaughn Road. One (1) Commercial Lot remaining. Excellent for many types of business or office use. Contact Lee Meriwether, CCIM, for more information at (334) 398-1808.



Lee W. Meriwether, CCIM
John Stanley & Associates, Inc.
4747 Woodmere Blvd.
Montgomery, AL 36106
(334) 271-2475 voice
(334) 271-2421 fax
(334) 398-1808 cell
imeriwether@johnstanleyassociates.com
www.johnstanleyassociates.com



All information is from sources deemed reliable, but no warranty is made as to the accuracy thereof and same is submitted subject to errors, omissions, change of price, or other conditions, such as prior sales or withdrawal without notice by John Stanley & Associates, Inc. or the Owner.



Lot 8-A
 +/- 32,625 S.F.

SOLD

SOLD DOLLAR GENERAL

SOLD

SOLD SHERWIN-WILLIAMS

SOLD PET DAY CARE/BOARDING

SOLD

SOLD PET DAY CARE/BOARDING

SOLD

SOLD NEW TOPIA

EXISTING 30" SANITARY SEWER EASEMENT AS RECORDED IN RFLY 3334, PAGES 177-179

EXISTING 30" SANITARY SEWER EASEMENT AS RECORDED IN RFLY 3334, PAGES 177-179

CURVE DATA
 R = 15.50'
 L = 24.29'
 CH = N44°07'13"E
 (N44°14'23"E)
 21.88'
 (21.95')

CURVE DATA
 R = 15.51'
 L = 24.40'
 CH = S45°39'06"E
 (S45°45'37"E)
 21.96'
 (21.89')

CURVE DATA
 R = 950.87'
 L = 72.78'
 CH = N05°53'11"E
 (N05°49'37"E)
 72.76'
 (72.84')

CURVE DATA
 R = 895.83'
 L = 54.78'
 CH = N10°19'11"E
 (N10°26'55"E)
 54.77'
 (54.81')

CURVE DATA
 R = 1494.57'
 L = 85.87'
 CH = S10°25'59"W
 (S10°21'49"W)
 85.85'
 (85.72')

CURVE DATA
 R = 16993.48'
 L = 88.60'
 CH = S10°18'06"W
 (S10°18'06"W)
 86.65'
 (85.87')

CURVE DATA
 R = 1360.08'
 L = 94.88'
 CH = S01°08'29"W
 (S01°05'19"W)
 94.88'
 (94.97')

CURVE DATA
 R = 1520.97'
 L = 107.80'
 CH = S01°28'23"W
 (S01°24'18"W)
 107.78'
 (107.87')

CURVE DATA
 R = 1520.97'
 L = 107.80'
 CH = S01°28'23"W
 (S01°24'18"W)
 107.78'
 (107.87')

CURVE DATA
 R = 1520.97'
 L = 107.80'
 CH = S01°28'23"W
 (S01°24'18"W)
 107.78'
 (107.87')

