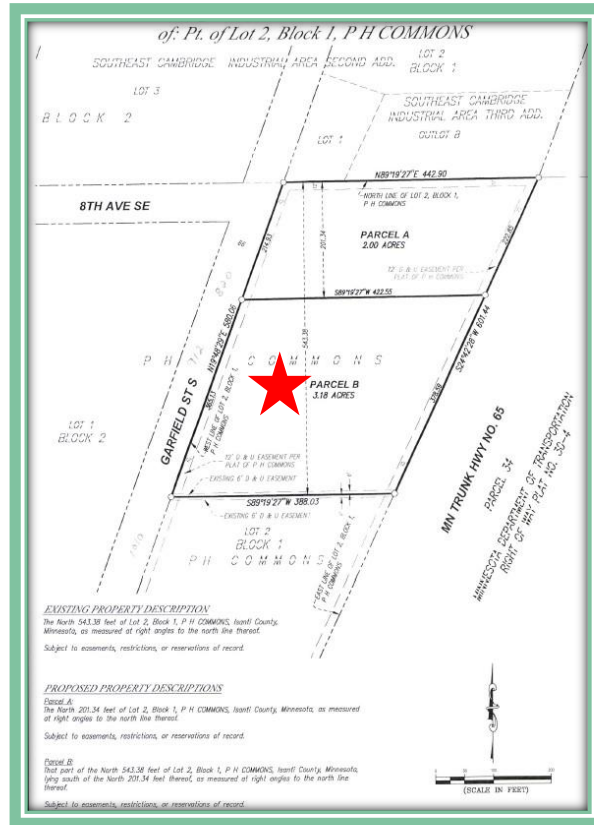


## 912 Garfield St, S, Cambridge, MN 55008



- 3.18 acres (138,520sf)
- Isanti County
- PID(s): 15.194.0024
- 2024 Taxes: \$3348
- Zoned Hwy Business District B2
- Permitted Uses

- Auto Parts Retail, or Repair & Service
- Auto Sales
- Small Engine Repair
- Veterinary Clinic
- Commercial Recreation

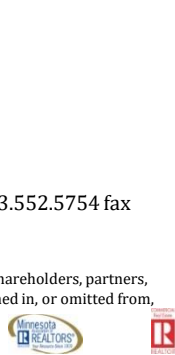
**Sale Price: \$657,973**  
**(approx. \$4.75 psf)**

Contact:

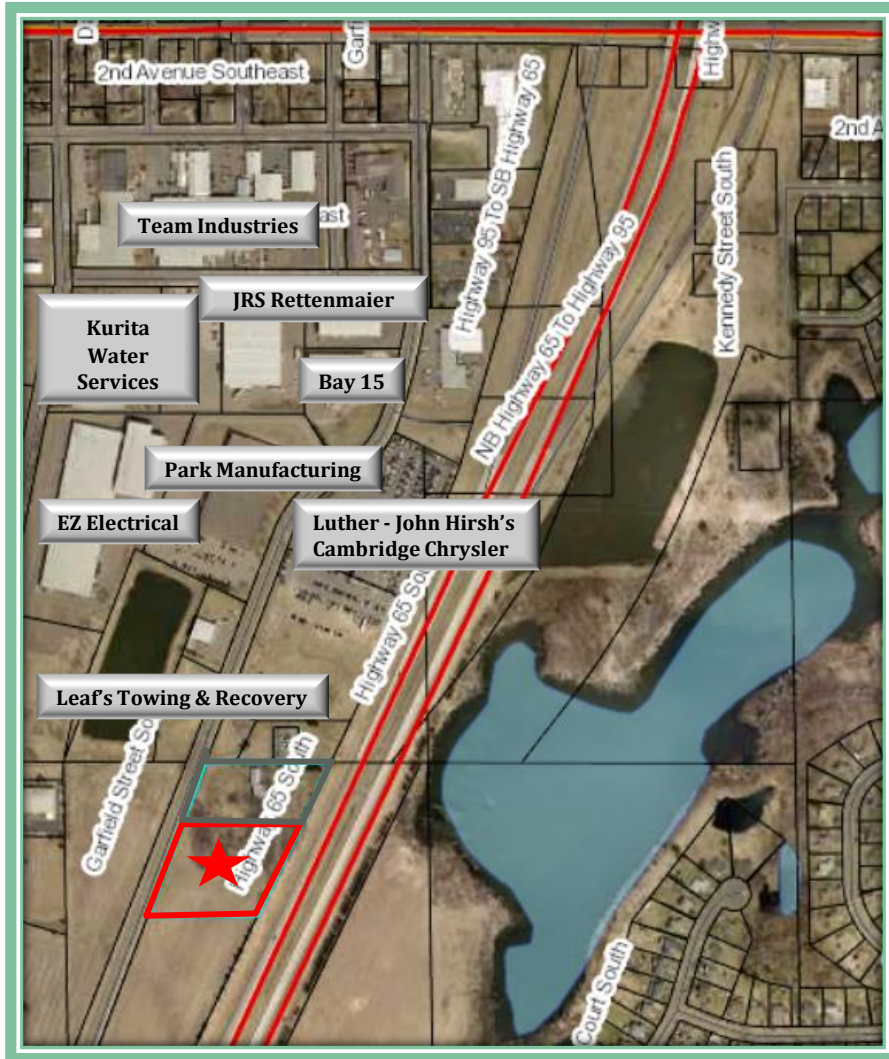
**Matt Anderson**  
COMMERCIAL BROKER

612.327.2977 direct 763.689.0349 office 763.552.5754 fax

[Matt@ricproperty.com](mailto:Matt@ricproperty.com)



## Local Commerce



Contact:

**Matt Anderson**  
COMMERCIAL BROKER

612.327.2977 direct 763.689.0349 office 763.552.5754 fax

[Matt@ricproperty.com](mailto:Matt@ricproperty.com)



<u>DEMOGRAPHICS</u>	1 MILE	5 MILES	10 MILES
POPULATION	8209	14,246	31,576
MEDIAN HH INCOME	\$51,812	\$59,230	\$61,146
AVERAGE HH INCOME	\$55,001	\$72,890	\$71,935

**PULLING FROM SEVERAL SURROUNDING COMMUNITIES CAMBRIDGE HAS 22,300 CPD TRAVELING INTO ITS RETAIL HUB.**

TRAFFIC COUNTS CITY OF CAMBRIDGE

HWY 65 AT HWY 95	22,700 CARS PER DAY
HWY 65 AT MAIN ST	18,900 CARS PER DAY
HWY 95 AT OPPORTUNITY BLVD.	22,300 CARS PER DAY
HWY 95 AT MAIN ST	14,200 CARS PER DAY
HWY 95 AT SPIRIT RIVER DR.	11,500 CARS PER DAY

Contact:

**Matt Anderson**

COMMERCIAL BROKER

612.327.2977 direct 763.689.0349 office 763.552.5754 fax

[Matt@ricproperty.com](mailto:Matt@ricproperty.com)