

107 E. MILWAUKEE AVENUE
DETROIT, MICHIGAN

RETAIL FOR SALE
10,440 Square Feet Available



**SIGNATURE
ASSOCIATES**
KNOW SIGNATURE | KNOW RESULTS

SUBSTANTIAL PRICE REDUCTION!



PROPERTY FEATURES

- 10,440 square feet available
 - 8,500 square foot first floor (Firewater Bar & Grill)
 - 1,940 square foot second floor (Apartments)
- 28' clear height
- Partial basement
- Available immediately
- Easy access to I-75 and I-94
- Available for individual sale or as part of an 8-property portfolio totaling 30,700 square feet and 1.21 acres
- Sale Price: \$875,000 (\$84.00/sq. ft.)



For more information, please contact:

STEVE GORDON
(248) 948 0101

sgordon@signatureassociates.com

CHRIS MONSOUR
(248) 948 0107

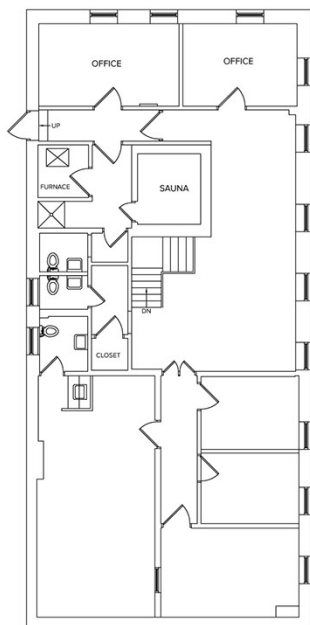
cmonsour@signatureassociates.com

JOE STACK
(248) 359 0615

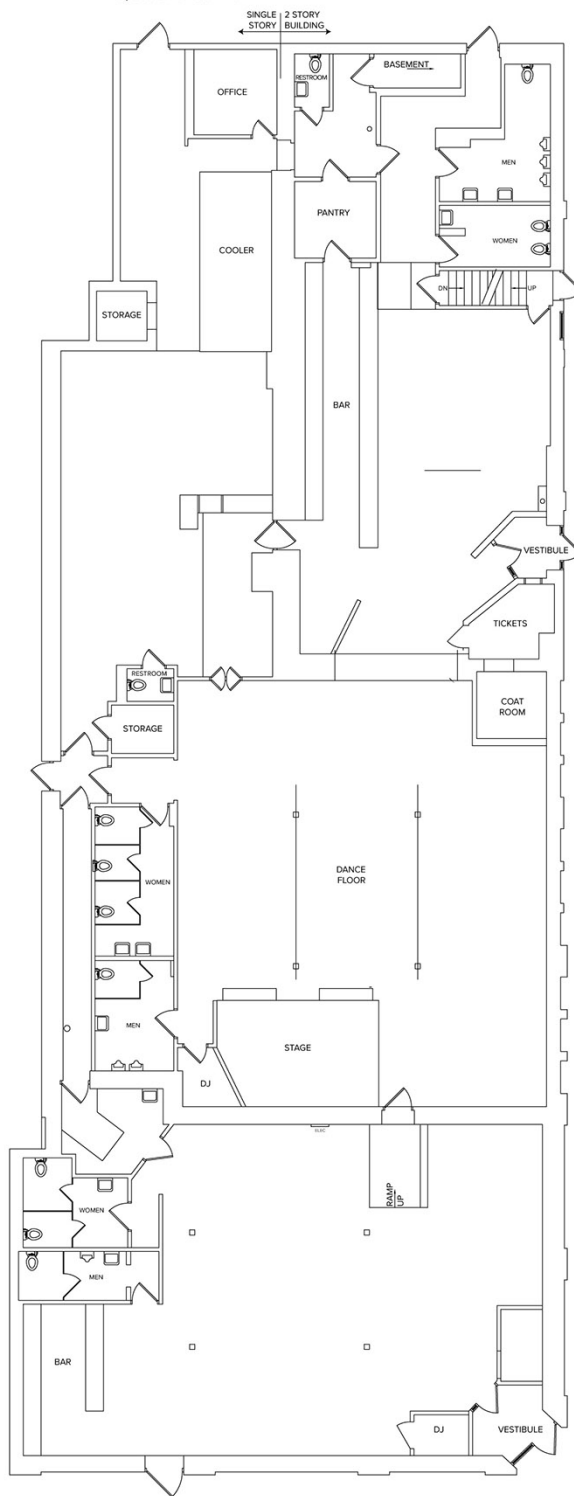
jstack@signatureassociates.com

Floor Plans

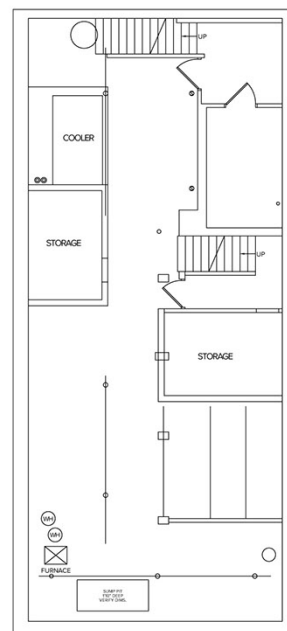
SECOND FLOOR
1,940 SQ.FT.



FIRST FLOOR
8,500 SQ.FT.



BASEMENT



For more information, please contact:

STEVE GORDON
(248) 948 0101

CHRIS MONSOUR
(248) 948 0107

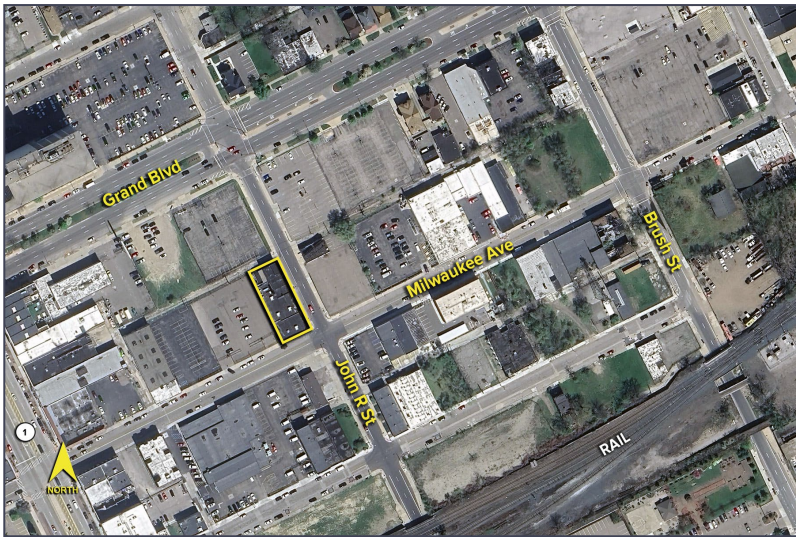
JOE STACK
(248) 359 0615

SIGNATURE ASSOCIATES
One Towne Square, Suite 1200
Southfield, MI 48076
www.signatureassociates.com

107 E. Milwaukee Avenue – Detroit, Michigan

Retail For Sale

10,440
Square Feet
AVAILABLE

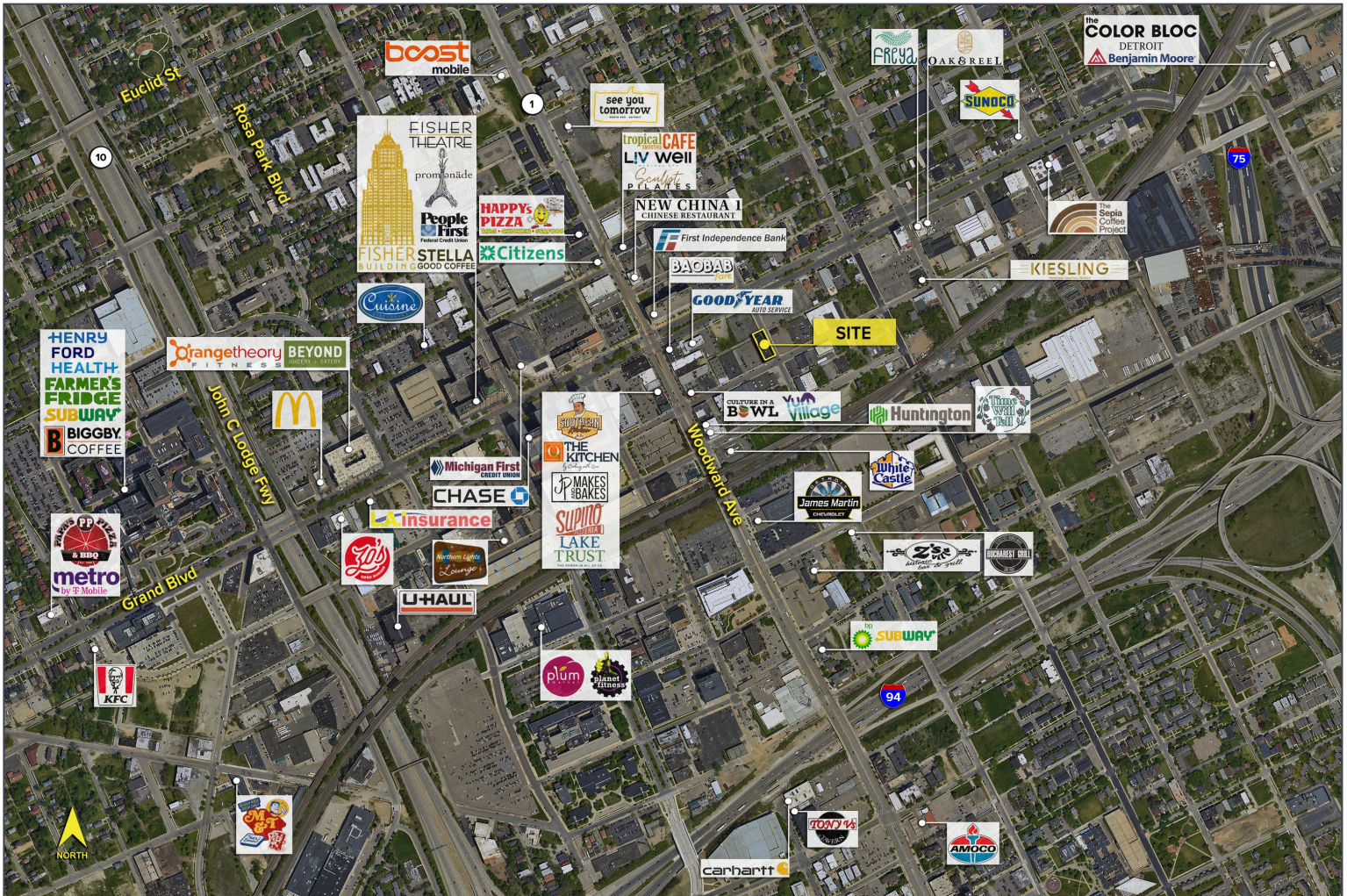


DEMOGRAPHICS

	POPULATION	MED. HH INCOME
1 MILE	16,714	\$43,682
3 MILE	142,153	\$43,793
5 MILE	327,828	\$43,760

TRAFFIC COUNTS (TWO-WAY)

16,725	Woodward Ave. S of Grand Blvd.
17,993	Woodward Ave. N of Grand Blvd.
13,773	Grand Blvd. E of Woodward Ave.
11,554	Grand Blvd. W of Woodward Ave.



For more information, please contact:

STEVE GORDON
(248) 948 0101

CHRIS MONSOUR
(248) 948 0107

JOE STACK
(248) 359 0615

SIGNATURE ASSOCIATES
One Towne Square, Suite 1200
Southfield, MI 48076
www.signatureassociates.com