

FOR SALE

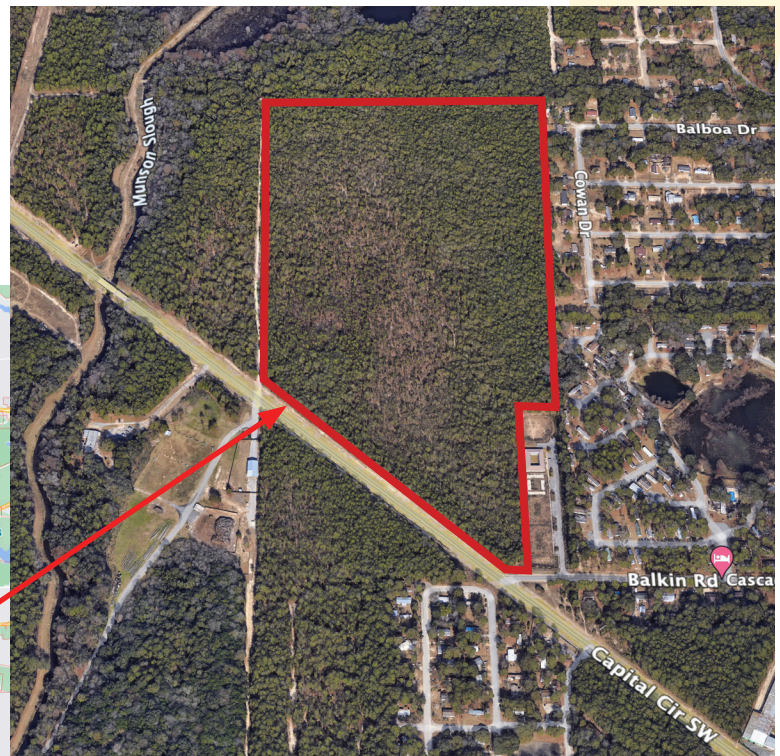
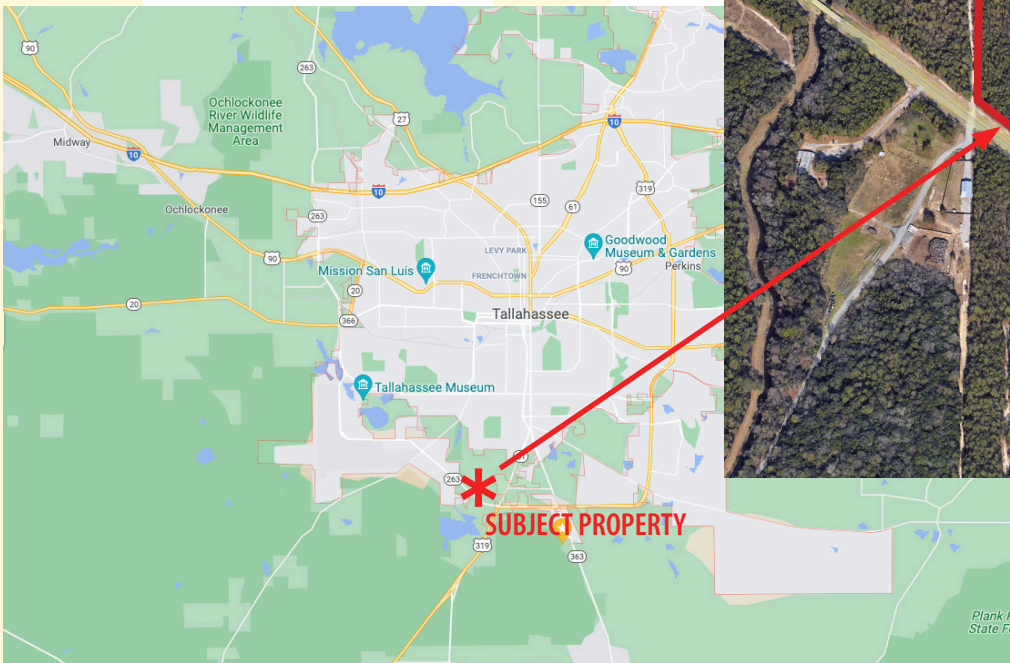
THE **WILLIAMS** GROUP
commercial real estate services

61.49 Acres with Entitlements in Place

Capital Circle SW, Tallahassee, FL

- >> Parcel ID: 4123230000010
- >> Zoning: PUD with high density M-1- light industrial, as well as residential and other non-residential uses.
- >> Entitled for 650k+ SF light industrial, no wetlands, no flood zones
- >> 2.0 miles from Tallahassee International Airport
5.5 Miles from downtown Tallahassee and State Capitol
8.5 miles to I-10 (exit 196) via Capital Circle (Truck Route)
- soon to be 4-6 lanes from site to I-10
- >> Population: 207,330 (20 min drive time)
371,950 (40 min drive time)
481,012 (60 min drive time)

>> **Asking Price: Undisclosed**



For more information contact :
Johanna W Money

PO Box 2068 Tallahassee, FL 32316 // p 850.545.1674 // f 850.224.1790 // johanna@williamsgroupcre.com

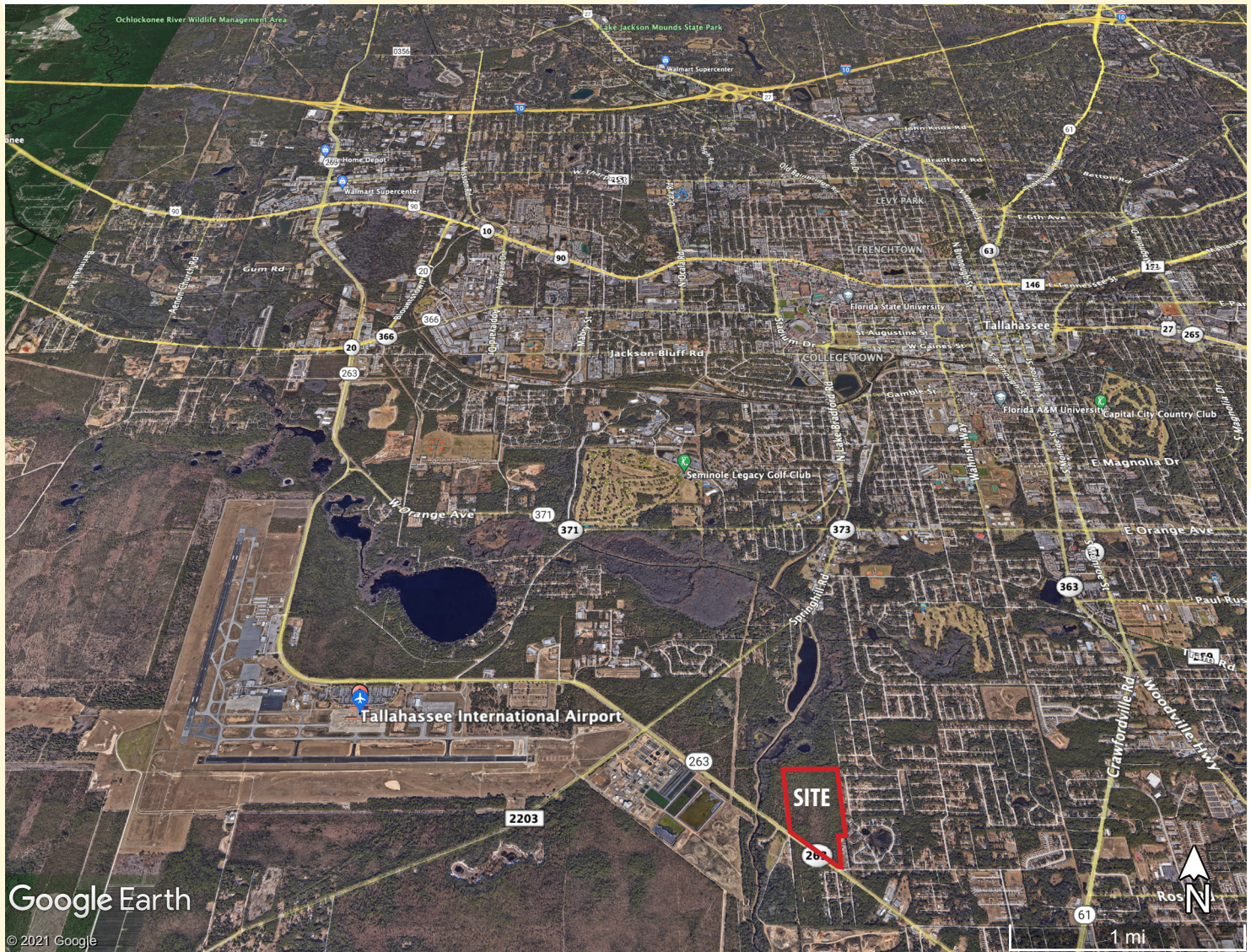
All information contained in this document is deemed reliable but not guaranteed. All properties are subject to prior sale, change or withdrawal notice. The Williams Group believes all information to be correct but assumes no legal responsibility for accuracy.

850.545.1674
www.WilliamsGroupCRE.com

FOR SALE

THE **WILLIAMS** GROUP
commercial real estate services

:::Location:::



For more information contact :
Johanna W Money

PO Box 2068 Tallahassee, FL 32316 // p 850.545.1674 // f 850.224.1790 // johanna@williamsgroupcre.com

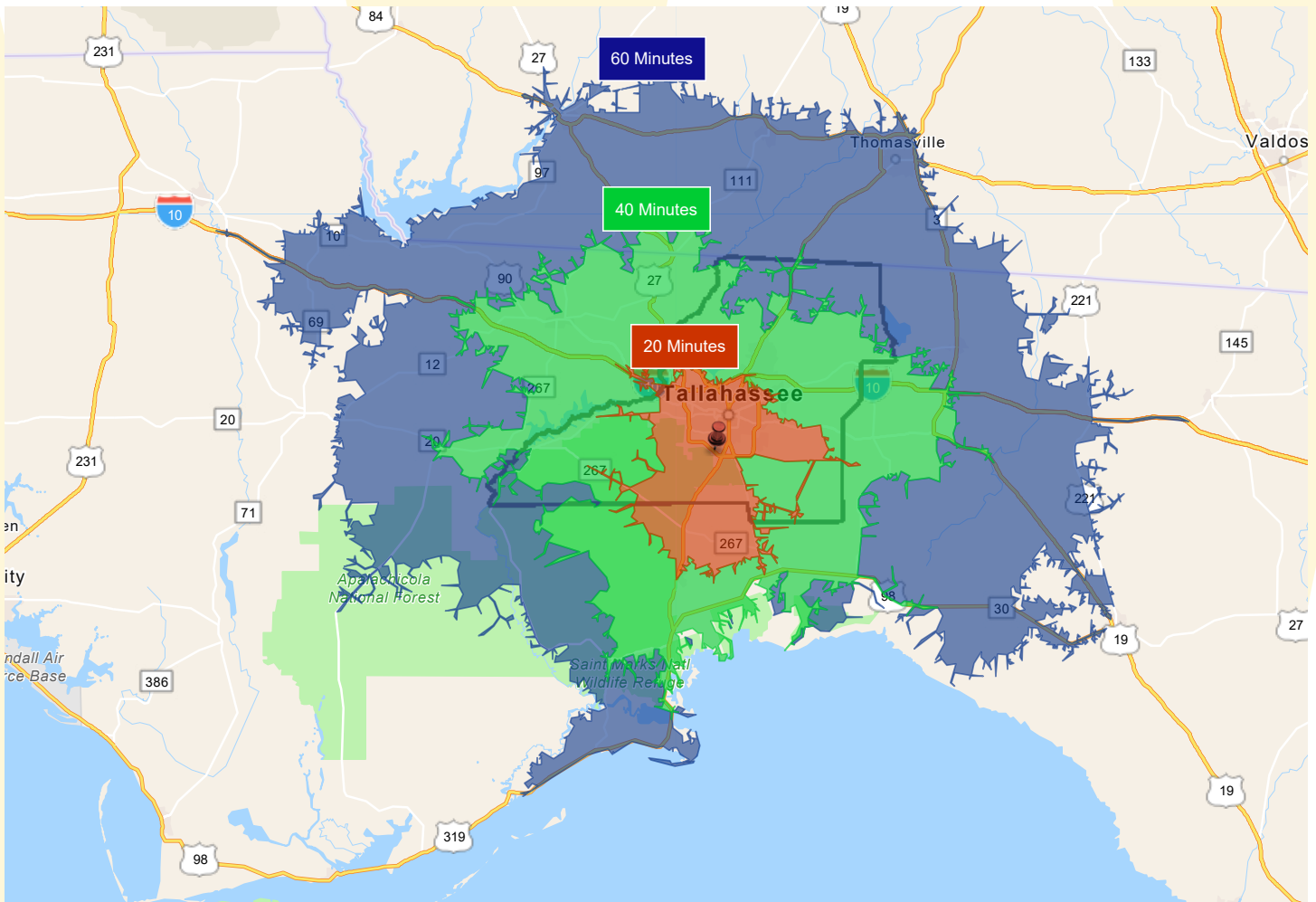
All information contained in this document is deemed reliable but not guaranteed. All properties are subject to prior sale, change or withdrawal notice. The Williams Group believes all information to be correct but assumes no legal responsibility for accuracy.

850.545.1674
www.WilliamsGroupCRE.com

FOR SALE

THE **WILLIAMS** GROUP
commercial real estate services

:::Drive Time:::



For more information contact :
Johanna W Money

PO Box 2068 Tallahassee, FL 32316 // p 850.545.1674 // f 850.224.1790 // johanna@williamsgroupcre.com

All information contained in this document is deemed reliable but not guaranteed. All properties are subject to prior sale, change or withdrawal notice. The Williams Group believes all information to be correct but assumes no legal responsibility for accuracy.

850.545.1674
www.WilliamsGroupCRE.com