

# FOR LEASE: OUTPATIENT MEDICAL SPACE

VIRTUAL  
TOUR  
LINKS  
INSIDE

## GRENADA MEDICAL COMPLEX

**2,160–3,142 RSF Available**

1300 Sunset Drive, Grenada, MS 38901

Proudly owned by

Healthpeak® | DOC  
LISTED  
NYSE

AMY HALL, CCIM  
SVP- LEASING AND PORTFOLIO STRATEGY  
414-367-5531 | AHall@healthpeak.com



## PROPERTY OVERVIEW

This complex is the top outpatient medical building in Grenada with local, on-site professional management. Specialties offered at this building include a pharmacy, lab, internal medicine, family medicine, orthopedics and sports medicine, neurology, ENT, hearing care, a foot clinic, and counseling. The building is 1.3 miles from the only hospital in Grenada, The University of Mississippi Medical Center, and is 5.4 miles from the Grenada Municipal Airport.

### CAMPUS SETTING

Off campus

### BUILDING DETAILS

53,025 RSF  
Built in 1972  
Renovated in 2000  
One story

### AVAILABLE

Suite K: 2,921 RSF  
Suite N: 3,142 RSF  
Suite A-1: 2,681 RSF  
Suite T: 2,160 RSF (timeshare suite)  
Suite B: 3,000 RSF

### ACCESS

Access from I-55 and  
Hwy 8/ Sunset Drive

### PARKING

Ample free parking

Proudly owned by

Healthpeak® | DOC  
LISTED  
NYSE

AMY HALL, CCIM  
SVP- LEASING AND PORTFOLIO STRATEGY  
414-367-5531 | AHall@healthpeak.com





## NEARBY HEALTH CARE

The University of Mississippi Medical Center (UMMC) is located 1.3 miles from the Grenada Medical Complex. UMMC is a 156-bed community hospital providing a broad range of health services to adults and children available through the state's only academic medical center. These services include over 20 types of specialty care, such as cancer care, urology care, orthopaedics, wound care, and hyperbaric medicine.

## AREA OVERVIEW

Strategically located on Interstate-55, Grenada, Mississippi, is halfway between Jackson, Mississippi, and Memphis, Tennessee. Grenada's Historic District and Downtown Square provide an abundance of small-town charm, while the beautiful Grenada Lake, many parks, and an expansive golf course designed by an award-winning golf architect offer numerous recreational opportunities. Area educational institutions include the Holmes Community College Grenada Campus and the University of Mississippi Grenada. Top area employers include Modine, Lennox, the Grenada School District, and UMMC.

Proudly owned by

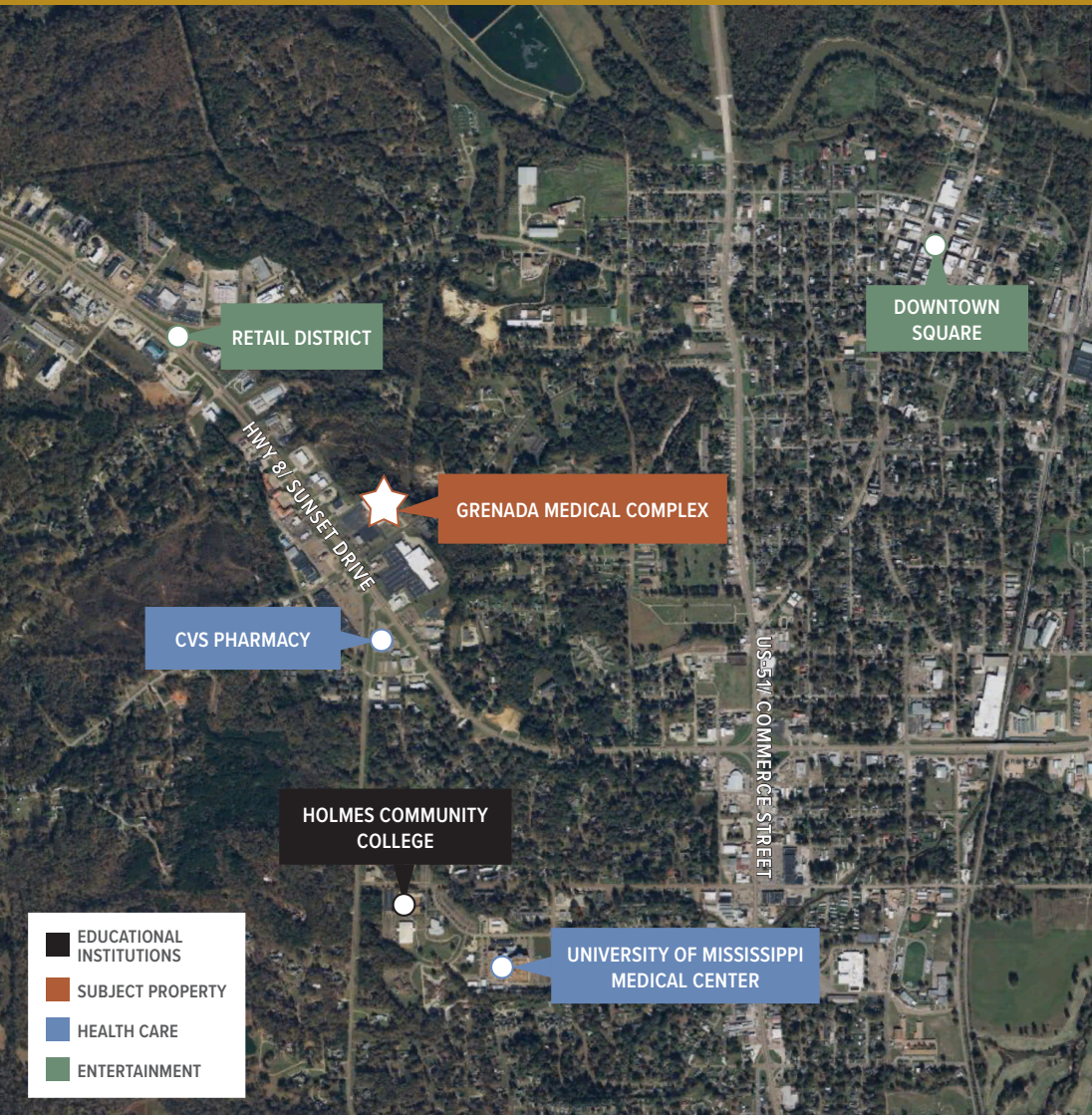
Healthpeak® | **DOC**  
LISTED  
NYSE

AMY HALL, CCIM  
SVP- LEASING AND PORTFOLIO STRATEGY  
414-367-5531 | AHall@healthpeak.com



# GRENADA MEDICAL COMPLEX

1300 Sunset Drive, Grenada, MS 38901



## DEMOGRAPHICS

Distance	Total Population	Median Household Income
1-Mile	4,137	\$25,194
3-Miles	10,319	\$29,500
5-Miles	12,942	\$38,720



### Area Health Care

#### Brandon, MS

- Crossgates River Oaks Hospital
- Merit Health Rankin
- Baptist Health Systems

#### Ridgeland, MS

- First Choice Health Plan of Mississippi
- Baptist Medical Group
- Select Specialty Hospital

#### Vicksburg, MS

- Merit Health River Region

#### Meridian, MS

- Rush Health Systems
- Anderson Regional Medical Center

#### Hattiesburg, MS

- Merit Health Wesley
- Forrest General hospital

Proudly owned by

Healthpeak® | **DOC**  
LISTED  
NYSE

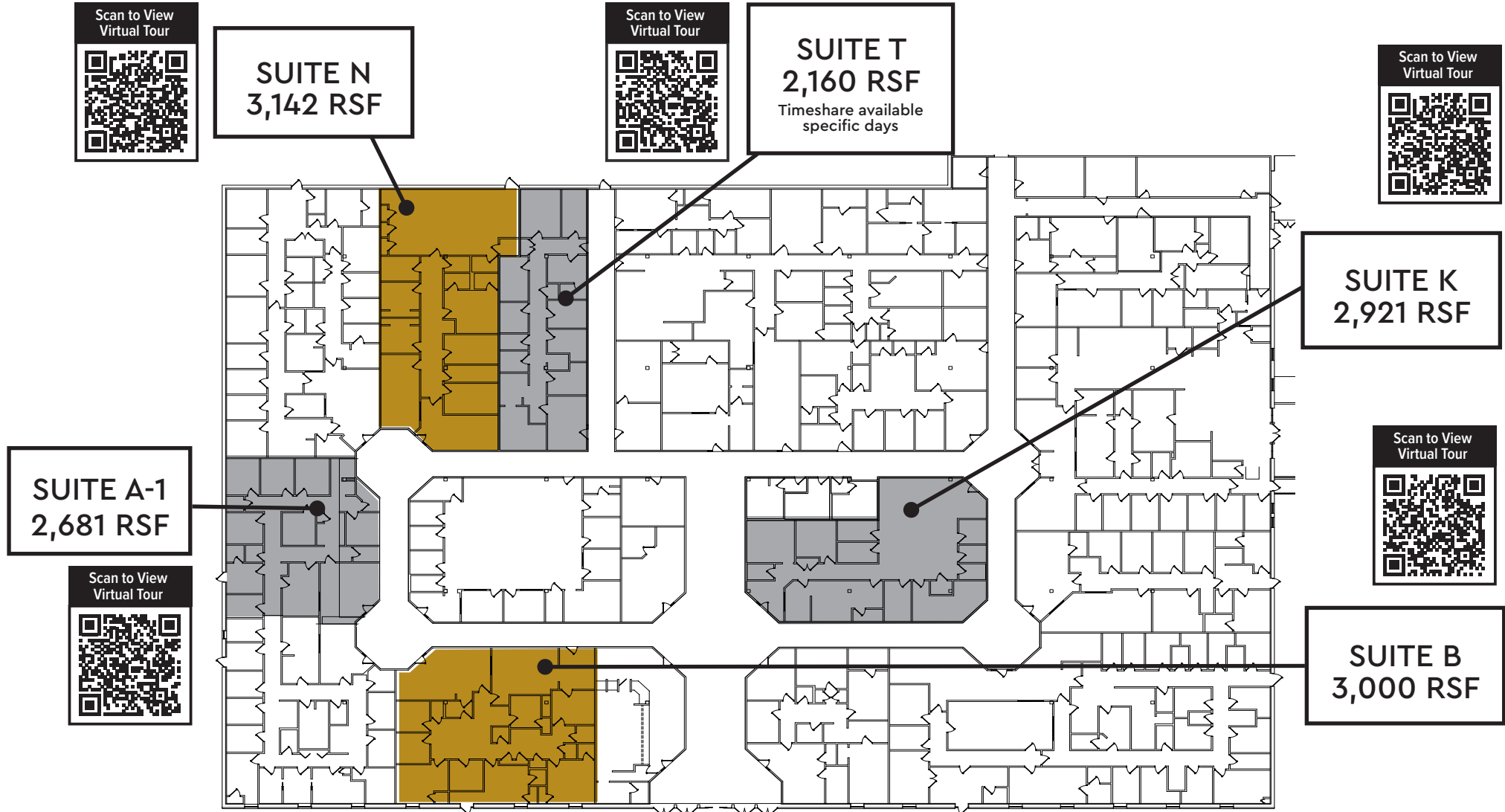
AMY HALL, CCIM

SVP- LEASING AND PORTFOLIO STRATEGY

414-367-5531 | AHall@healthpeak.com

# GRENADA MEDICAL COMPLEX

1300 Sunset Drive, Grenada, MS 38901



Proudly owned by

Healthpeak® | **DOC**  
LISTED  
NYSE

AMY HALL, CCIM  
SVP- LEASING AND PORTFOLIO STRATEGY  
414-367-5531 | AHall@healthpeak.com



