



151 EAST 10TH AVENUE
CONSHOHOCKEN, PA

AVAILABLE FOR SUBLEASE
CREATIVE OFFICE SPACE

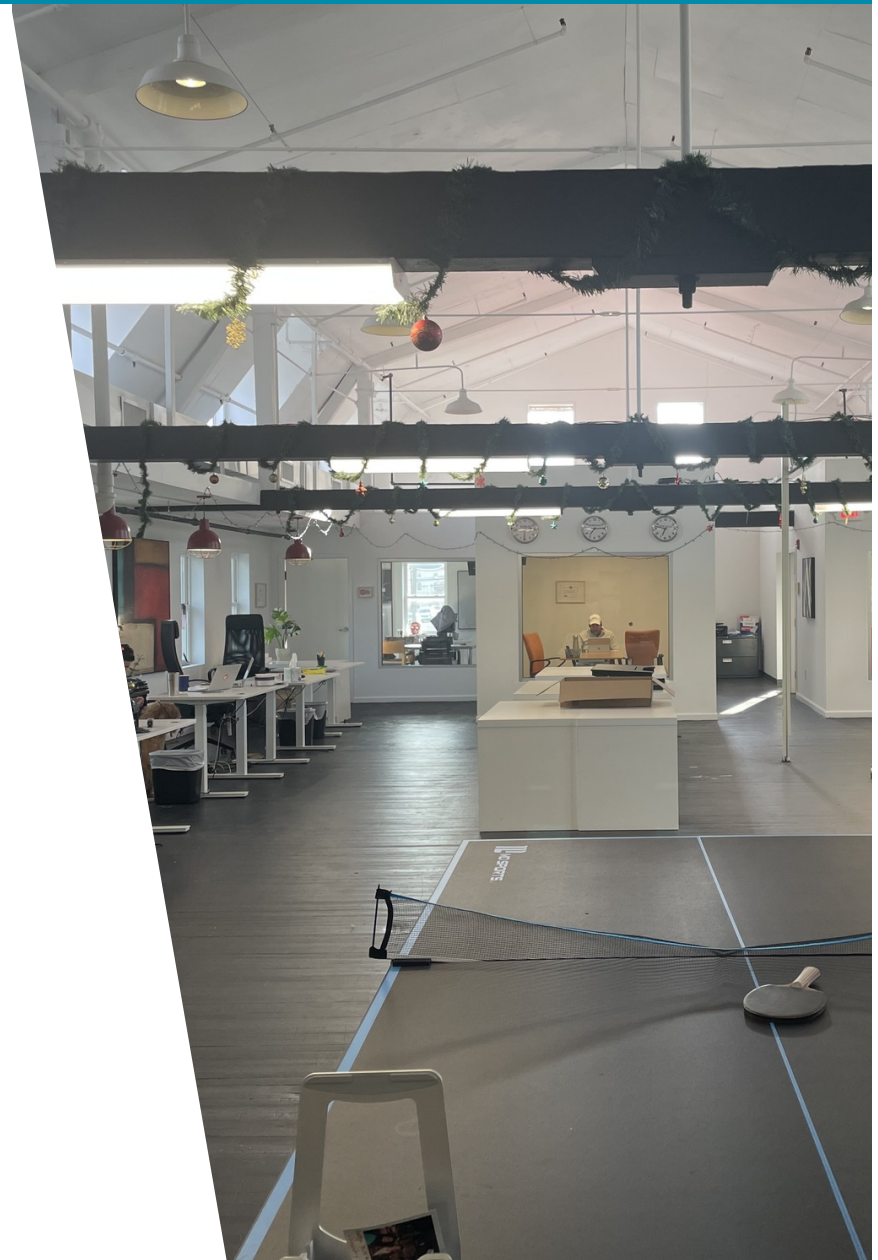
3,140 SF

PROPERTY HIGHLIGHTS

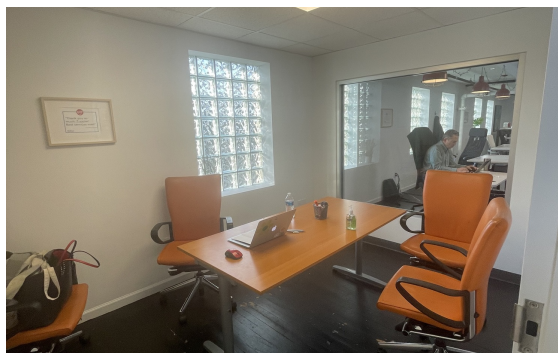
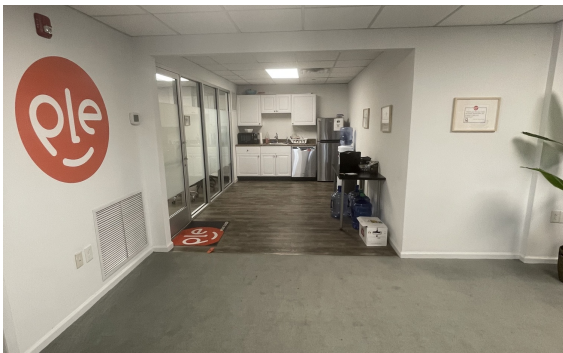
- Move-in ready creative office
- Available Immediately
- 3140 Total SF on the 2nd floor
- Term through February 2026
- Furniture can be made available
- Within walking distance of shops and restaurants in Conshohocken
- Quick access to I-76 and I-476, as well as the Conshohocken and Spring Mill regional rail stations

OFFICE DESCRIPTION

- Five Private Offices/Flex Spaces
- Eight sit/stand workstations with room for much more
- Large Conference/Training Room
- Private Men's and Women's bathrooms
- Modern Kitchenette
- Ample storage space
- Welcome area (opportunity to add reception)



ADDITIONAL PHOTOS



LOCATION AND DEMOGRAPHICS



POPULATION	1 MILE	5 MILES	10 MILES
Total Population	16,490	213,543	1,305,523
Average Age	52.8	45.0	41.4
Average Age (Male)	50.1	44.3	40.5
Average Age (Female)	53.6	43.9	41.8
HOUSEHOLDS & INCOME	1 MILE	5 MILES	10 MILES
Total Households	7,900	83,339	522,682
# of Persons per HH	2.1	2.4	2.4
Median HH Income	\$97,622	\$99,208	\$70,430
Median Home Value	\$354,348	\$378,613	\$305,684

CONTACT



Matt Lipson
Vice President
215.803.5100
mlipson@binswanger.com



Douglas Kelly
Vice President
610.278.1270
dkelly@binswanger.com



Three Logan Square
1717 Arch Street, Suite 5100
Philadelphia, PA 19103
Phone: 215.448.6000
binswanger.com

The information contained herein is from sources deemed reliable, but no warranty or representation is made as to the accuracy thereof and no liability may be imposed.