

Prime Development Opportunity

SEC of Randall Road & Grandview Drive
Carpentersville, IL



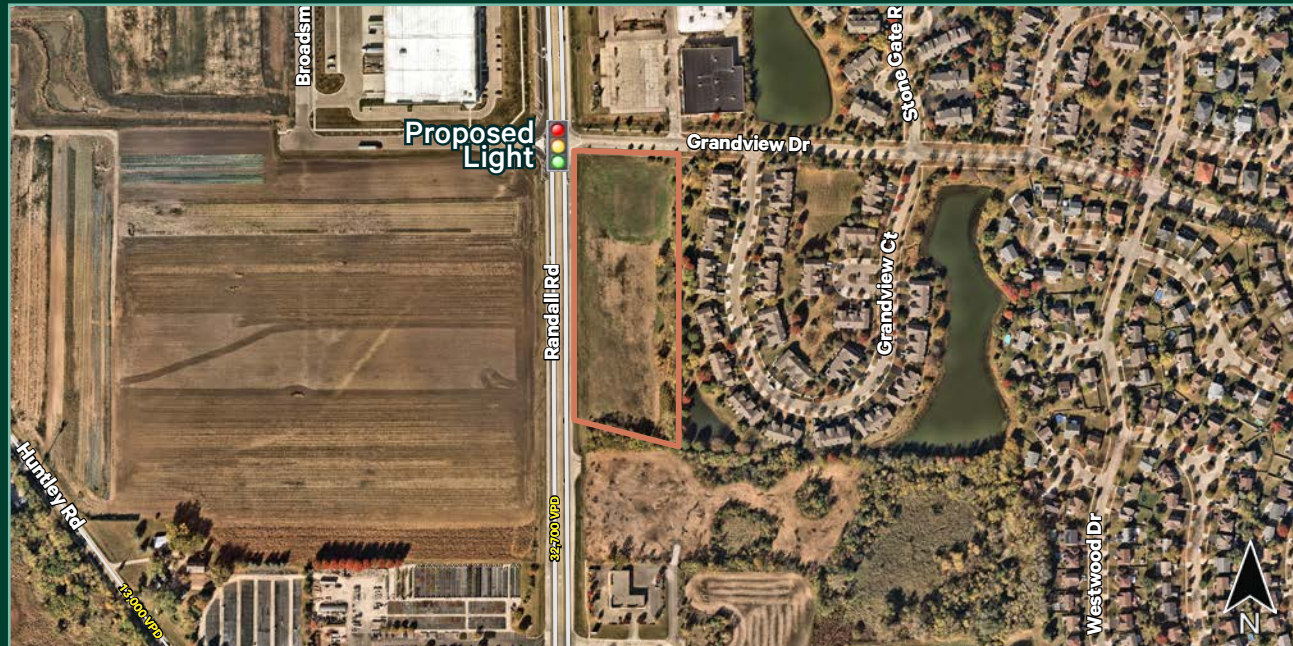
Property Highlights

SEC of Randall Road & Grandview Drive
Carpentersville, IL

For Sale ±6.34 Acres

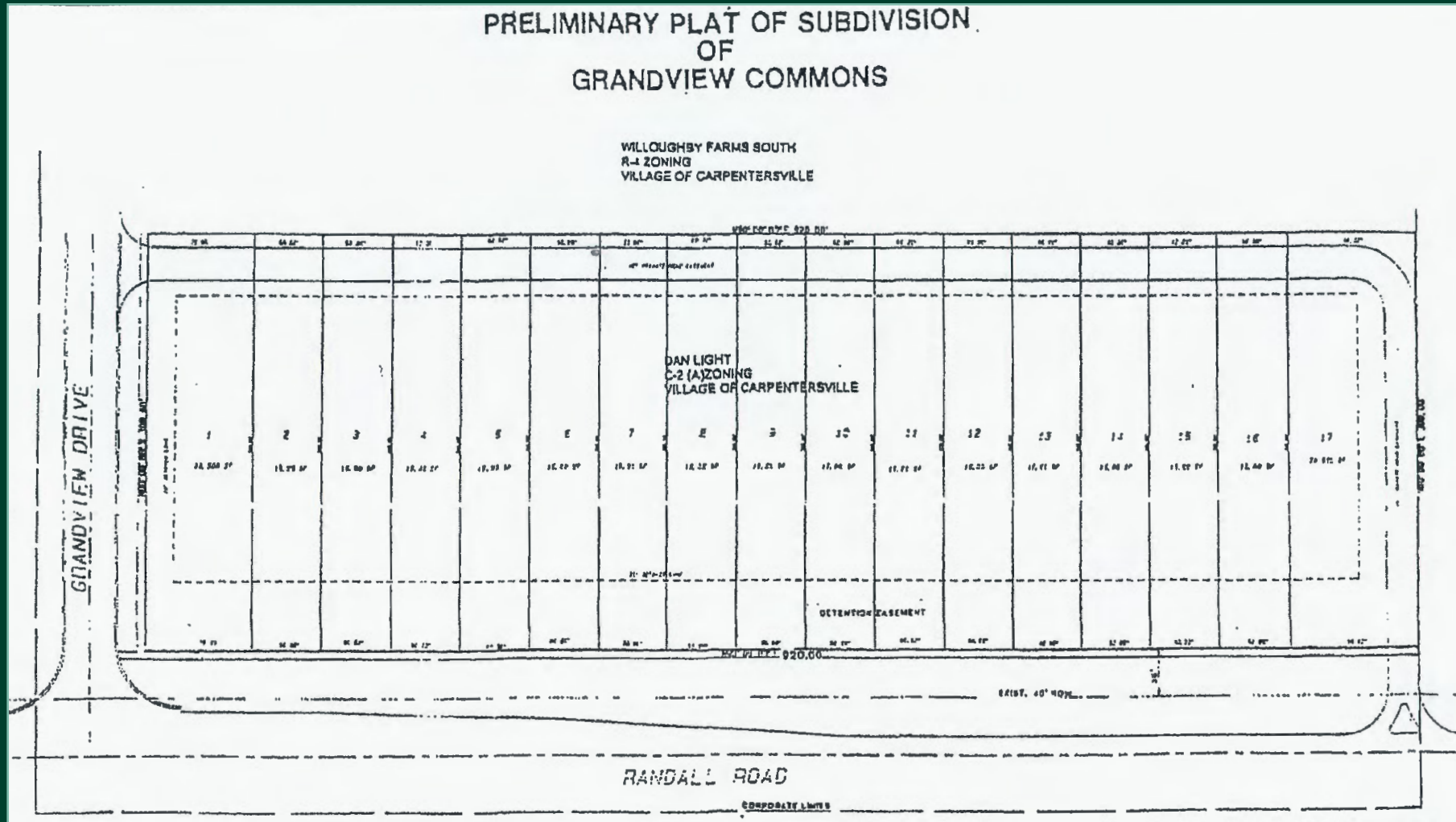
- + Proposed stop light at the intersection of Randall Rd & Grandview Dr
- + Within Proposed TIF
- + Zoned C-2-A Randall Road Commercial
- + Ideal development for Retail or Senior Housing
- + 920 feet of frontage along Randall Road
- + Sewer stubbed to site, water looped through property
- + Less than 1/4 mile north of Huntley Road, three miles from the I-90 interchange at Randall Rd
- + Preliminary Plat/Site engineering pending approval
- + Offsite detention provided
- + Traffic Counts:
33,700 vehicles per day on Randall Rd
- + PIN Numbers: 03-08-300-027 & 03-08-300-030
- + Taxes: \$392
- + Asking Price: Subject to Offer
- + Please call for additional Information

Site Aerial



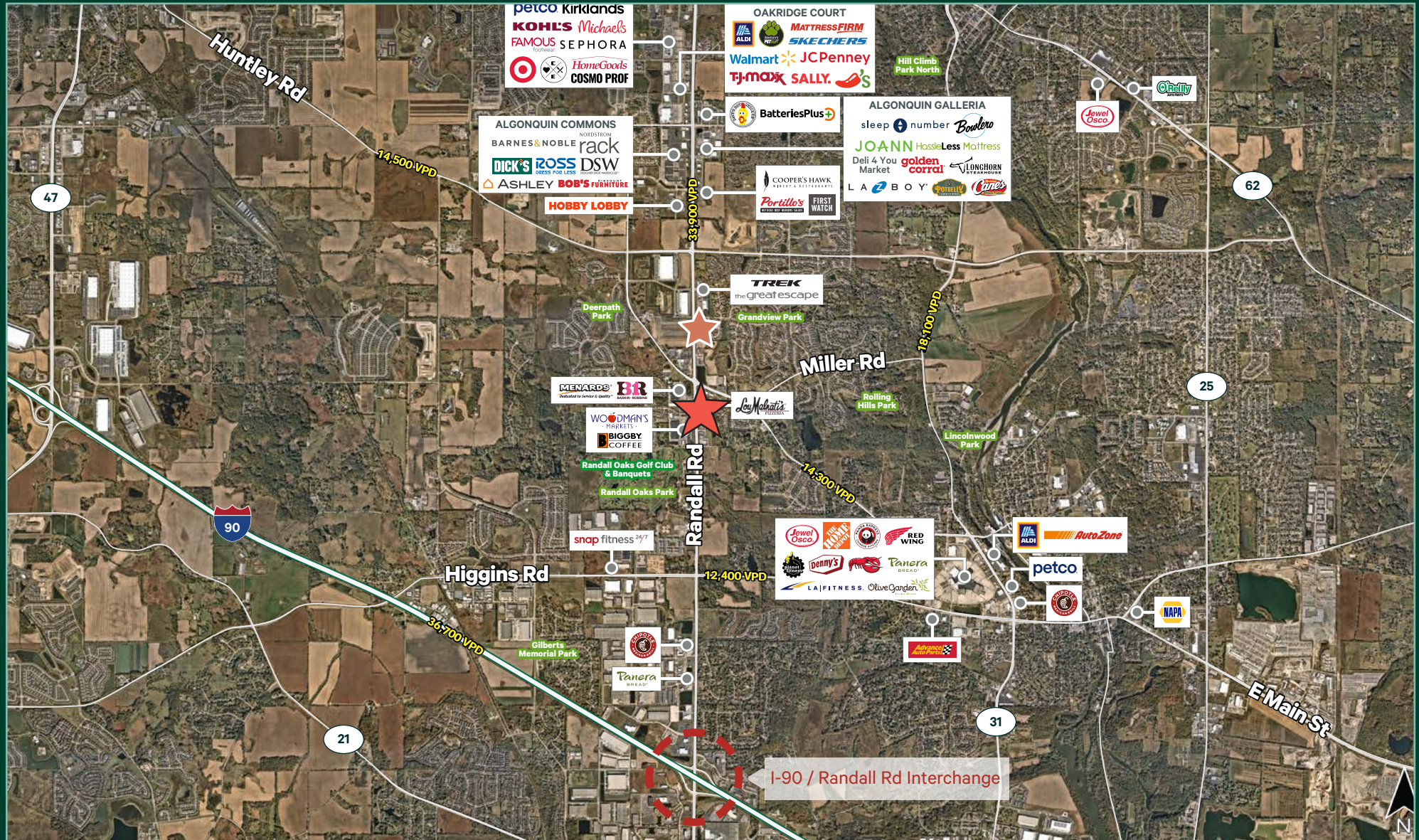
±6.34
Acres

Subject to Offer
Asking Price



Area Amenities and Transportation Corridors

SEC of Randall Road & Grandview Drive
Carpentersville, IL

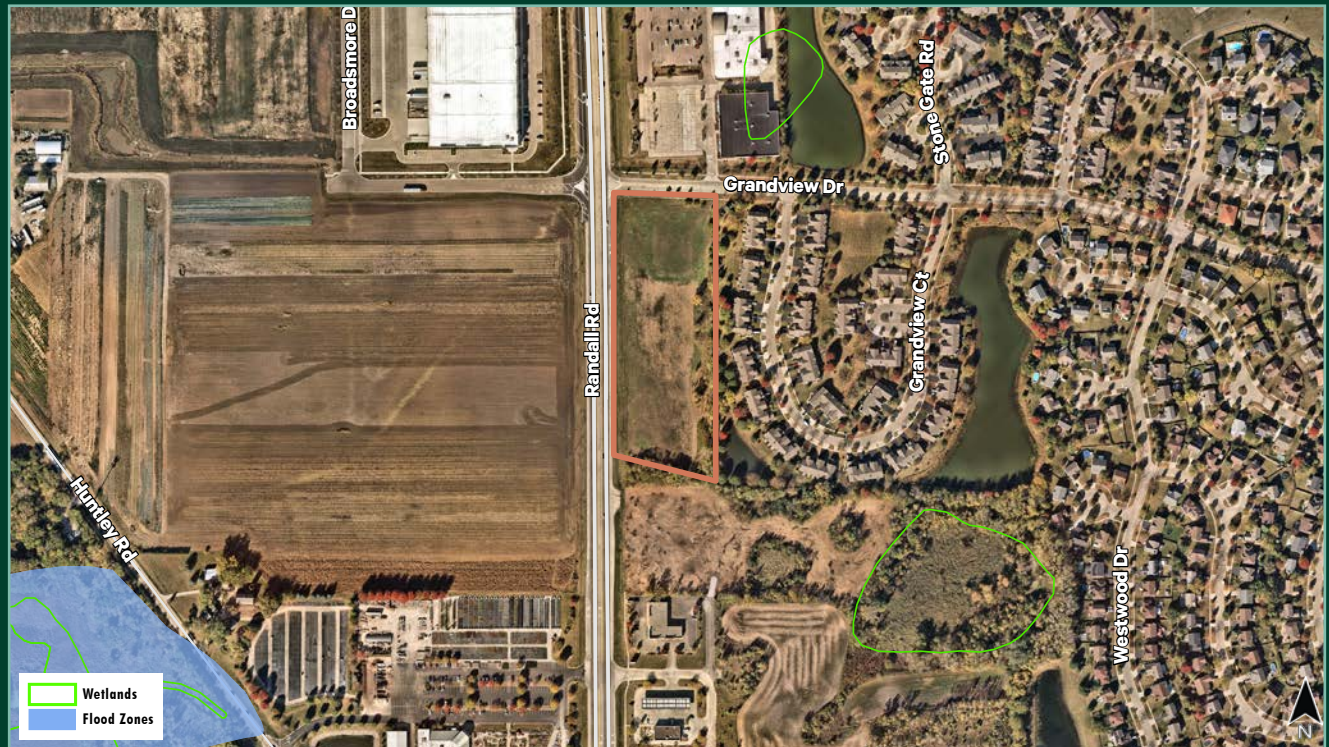


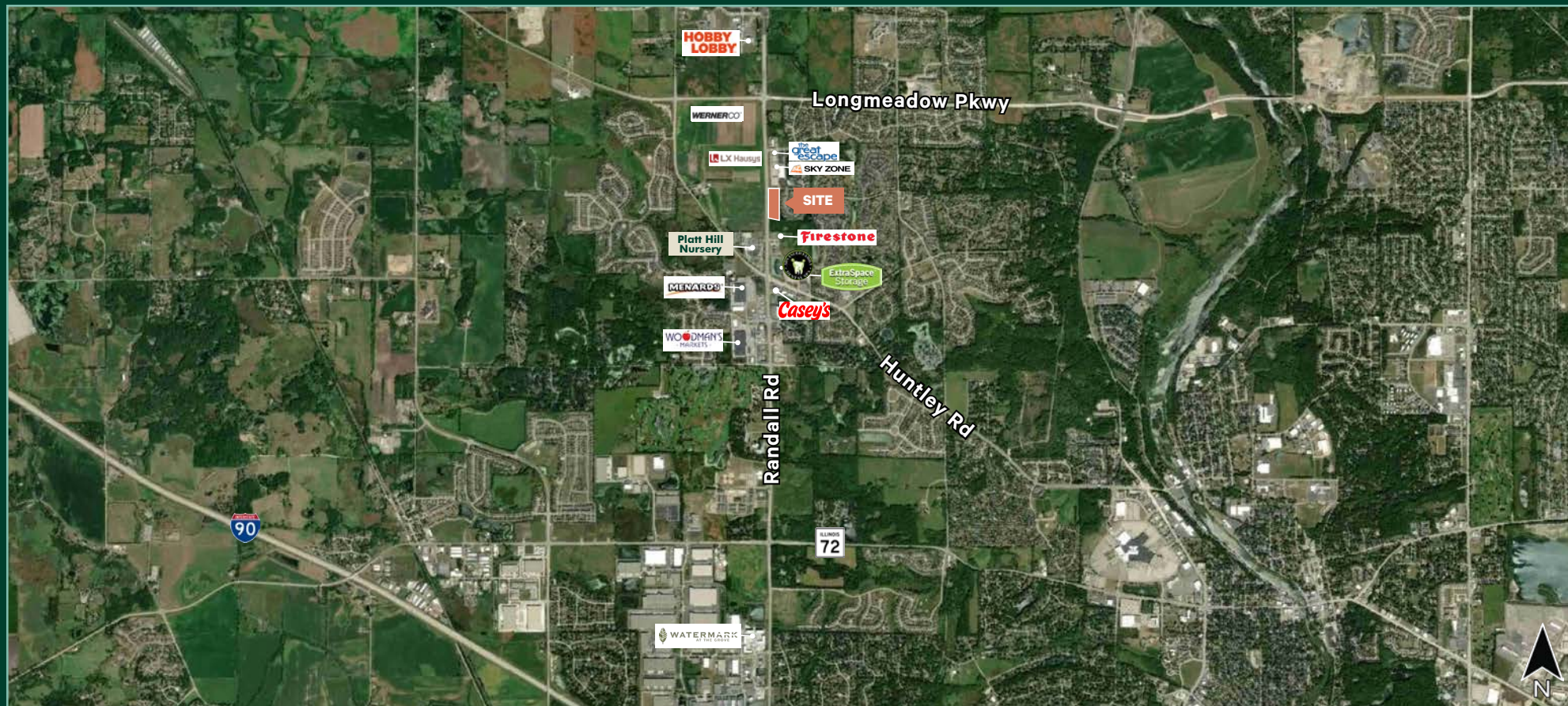
Demographic Snapshot

SEC of Randall Road & Grandview Drive
Carpentersville, IL

	1 MILE	3 MILES	5 MILES
Population	9,566	39,930	137,509
Households	3,357	14,193	48,360
Average Household Income	\$161,726	\$158,852	\$133,674
Average Housing Value	\$360,760	\$361,517	\$330,950

Floodplains / Wetlands





Contact Us

Tony Gange

Executive Vice President

+1 630 573 7030

tony.gange@cbre.com

Matt Ishikawa

Senior Vice President

+1 630 573 7068

matt.ishikawa@cbre.com

© 2025 CBRE, Inc. All rights reserved. This information has been obtained from sources believed reliable, but has not been verified for accuracy or completeness. You should conduct a careful, independent investigation of the property and verify all information. Any reliance on this information is solely at your own risk. CBRE and the CBRE logo are service marks of CBRE, Inc. All other marks displayed on this document are the property of their respective owners, and the use of such logos does not imply any affiliation with or endorsement of CBRE. Photos herein are the property of their respective owners. Use of these images without the express written consent of the owner is prohibited.