



1215 Bordeaux

SUNNYVALE | CA

FOR SUBLEASE ±26,615 SF

CBRE

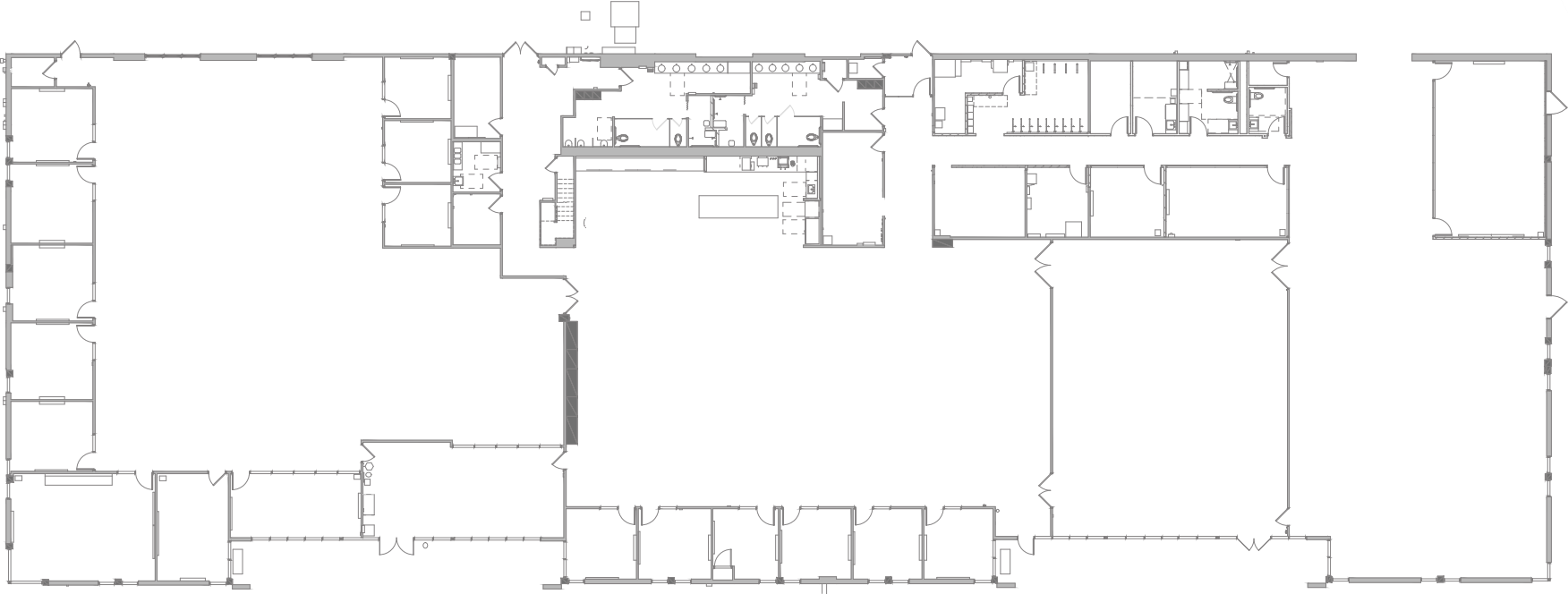
Property Highlights

- ±26,615 SF
- Excellent opportunity for auto lab company
- Ability to add Grade Level Loading
- 12' drop ceiling
- Showers in men's and women's restrooms
- Sublease 3/31/2025 LED
- 1,200 @ 277/480V Power



Floorplan

NOT TO SCALE



3 Open Office Areas
20 Conference Rooms

**Unfurnished

Amenities Map



**1215
BORDEAUX**

- 1 Sonesta ES Suites
- 2 Days Inn & Suites
- 3 Bank of the West
- 4 Grocery Outlet
- 5 Togo's Eateries
- 6 Radisson Hotel
- 7 Chevron
- 8 Quality
- 9 Extended Stay America
- 10 Le Boulanger
- 11 Star One Credit Union
- 12 Subway
- 13 USPS



Transportation Map



PALO ALTO	17 MIN (8.6 MILES)
DOWNTOWN MOUNTAIN VIEW	11 MIN (4.6 MILES)
SUNNYVALE	11 MIN (3.1 MILES)
SANTA CLARA	19 MIN (7.7 MILES)
DOWNTOWN SAN JOSE	24 MIN (10.6 MILES)
OAKLAND INTERNATIONAL AIRPORT	1 HR 23 MIN (39.3 MILES)
SAN JOSE MINETA INTERNATIONAL AIRPORT	20 MIN (8.3 MILES)





VINCENT SCOTT

Executive Vice President
Lic. 01833636
+1 408 453 7433
vincent.scott@cbre.com

PAYAM TABAR

Senior Vice President
Lic. 01759029
+1 650 494 5134
payam.tabar@cbre.com

MINA MOHAMADI

Vice President
Lic. 01944499
+1 650 494 5116
mina.mohamadi@cbre.com