

# OFFICES AT THE WANAMAKER



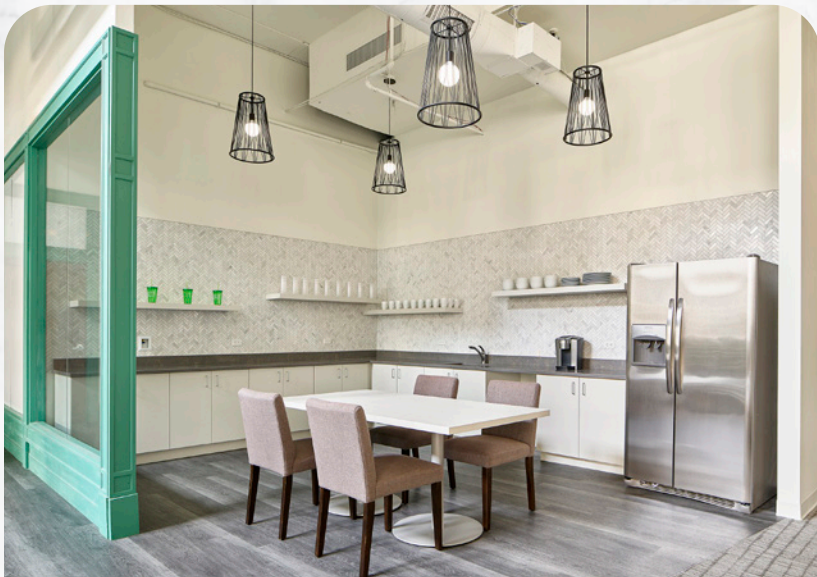
WHERE PHILLY COMES TO WORK.

**NEWMARK**

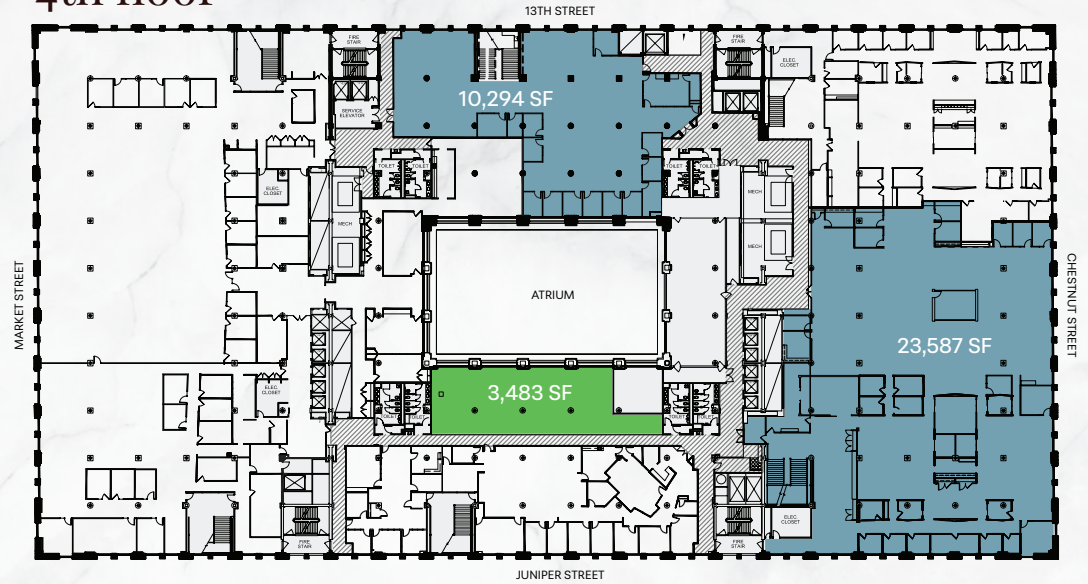
# available space

The 4th and 5th floor office space at the historic Wanamaker Building offer a blend of classic architectural charm and modern flexibility, making it an attractive location to businesses seeking a prominent downtown presence.

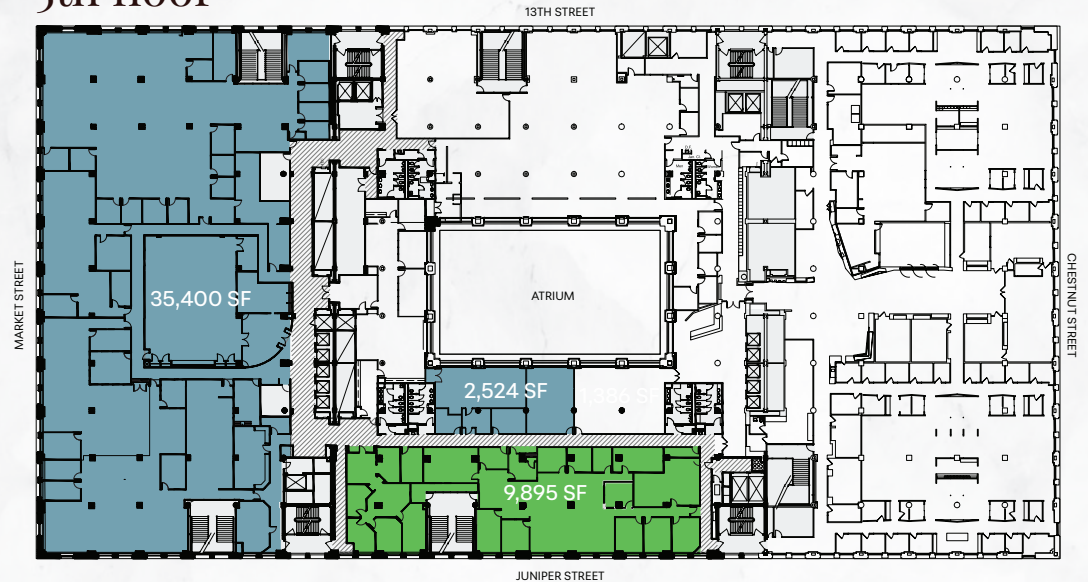
Large windows, exposed columns, and 15.5' ceilings provide an abundance of natural light and a unique loft-style atmosphere. The floors offer large, contiguous blocks of space suitable for both open-concept and private offices.



## 4th floor



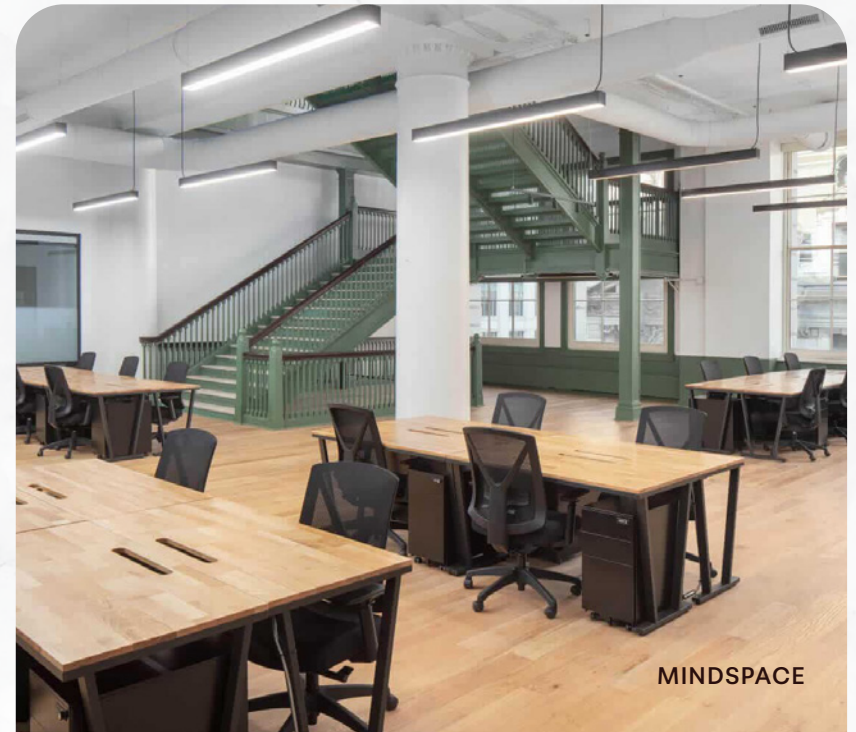
## 5th floor



# the future of wanamaker

Located just steps away from the iconic Reading Terminal Market and 13th Street's bustling bars and restaurants, The Wanamaker is ideally situated within walking distance of the country's most historic sites and monuments. Direct access to SEPTA's Suburban Station, proximity to City Hall, daily/monthly on-site parking, and future retail options ensure unparalleled convenience for both commuters and residents. This exceptional location places you at the heart of Philadelphia's vibrant urban scene, providing an unmatched blend of historic charm and contemporary features.

Additionally, the event/coworking space MINDSPACE features premium interiors, flexible membership options, and all-inclusive amenities.

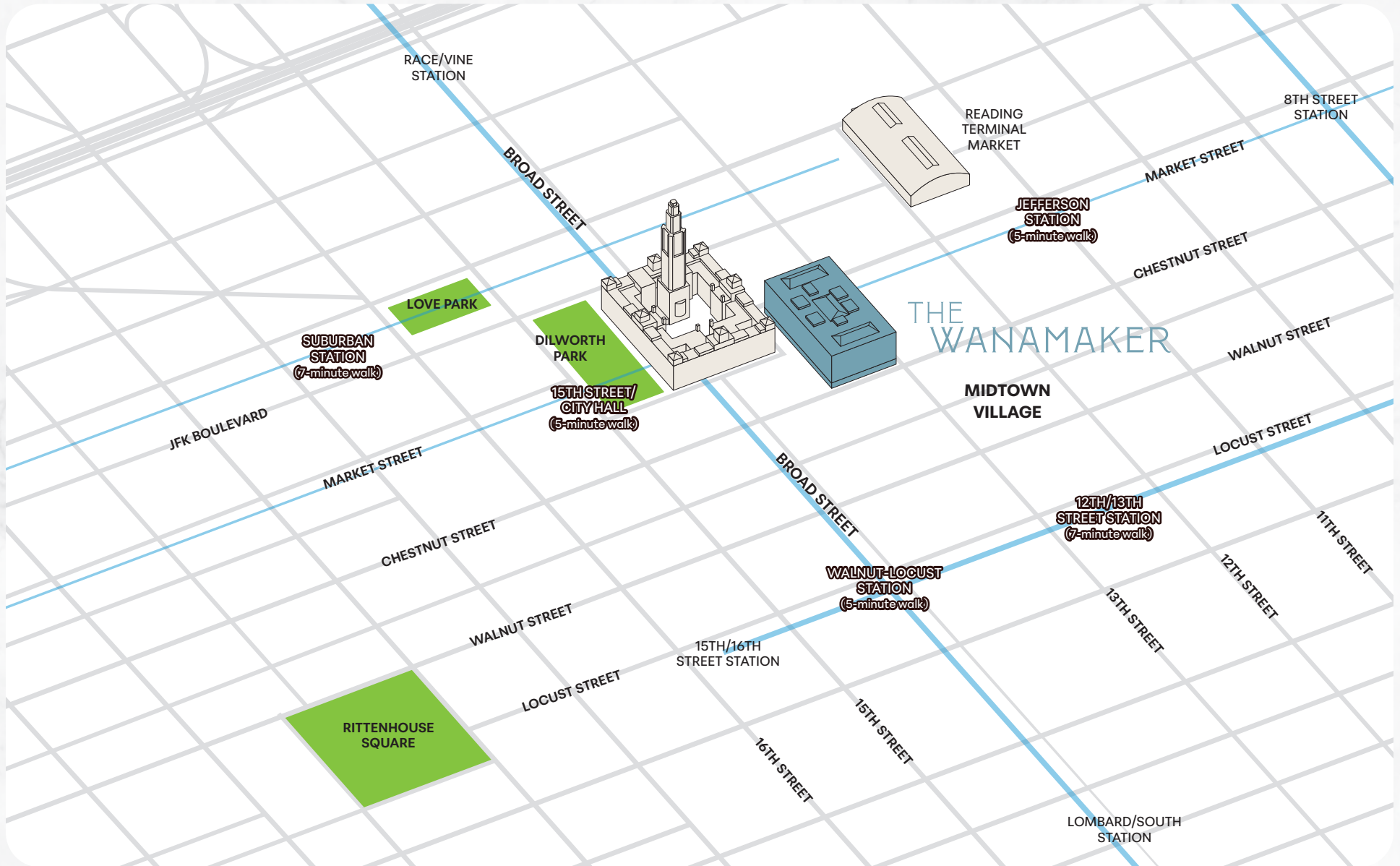


# reimagined retail



# unmatched location

The area surrounding the Wanamaker is a vibrant urban hub, boasting over 200 restaurants and bars within a 1/2 mile radius and more than 4,000 apartments catering to a diverse resident base. Both Jefferson Station and Suburban Station, as well as several SEPTA subway and bus lines and the PATCO highspeed line, are within walking distance, offering convenient regional and local transit options.





# NEWMARK

LICENSED IN PENNSYLVANIA  
AS NEWMARK REAL ESTATE

## contact us

### Neil Brazitis

Senior Managing Director  
215-320-4522  
neil.brazitis@nmrk.com

### Mike Dolan

Senior Managing Director  
215-561-8312  
mike.dolan@nmrk.com

### Kane Ritchie

Associate  
215-320-4518  
kane.ritchie@nmrk.com

2005 Commerce Street  
Suite 900  
Philadelphia, PA 19103  
215-561-8300

[nmrk.com](http://nmrk.com)

The information contained herein has been obtained from sources deemed reliable but has not been verified and no guarantee, warranty or representation, either express or implied, is made with respect to such information. Terms of sale or lease and availability are subject to change or withdrawal without notice.

