



## VIDEO

### Property Description

New office suites are available in the 2nd floor of the Midtown Plaza Court Building. Suites feature an updated lobby with elevator, parking, and modern finishes. Floor plans include a combination of open space and private offices.

### Property Highlights

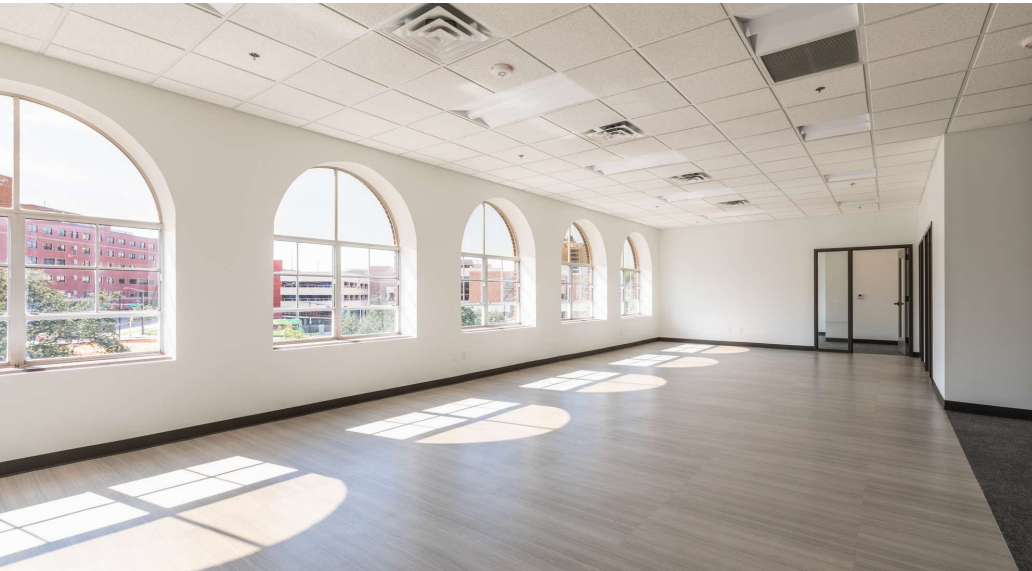
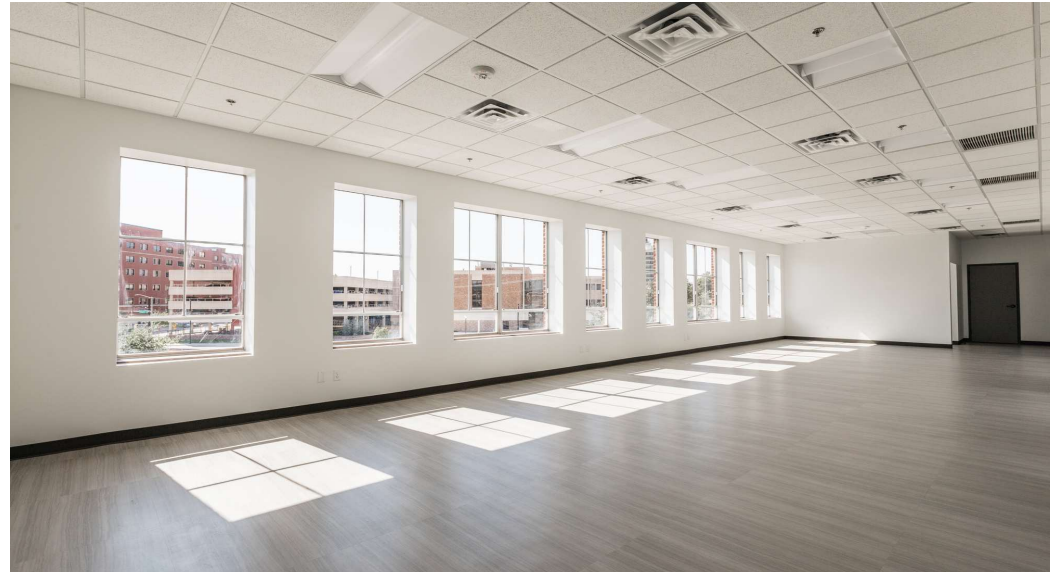
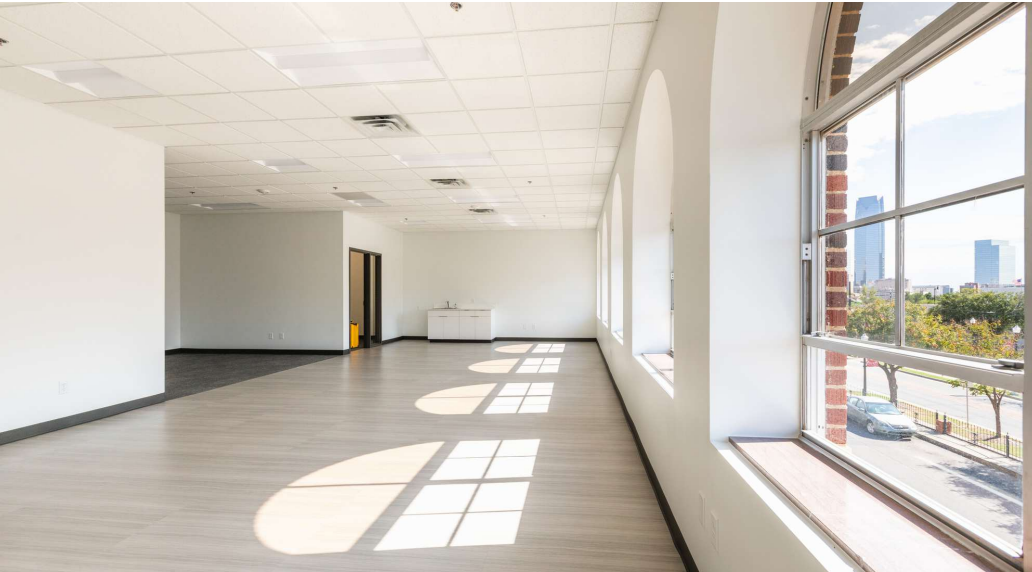
- Midtown amenities - this location is in the center of Midtown's restaurants and services
- Move-in ready suites
- New, modern finishes
- Iconic location with easy highway access
- Easy parking
- Ground level exterior wayfinding signs

### Offering Summary

Address:	1100 Classen Drive, OKC, OK 73103
Pricing:	\$24 NNN
Parking:	Parking Deck & Surface Parking
Available SF:	947 - 2,181 SF

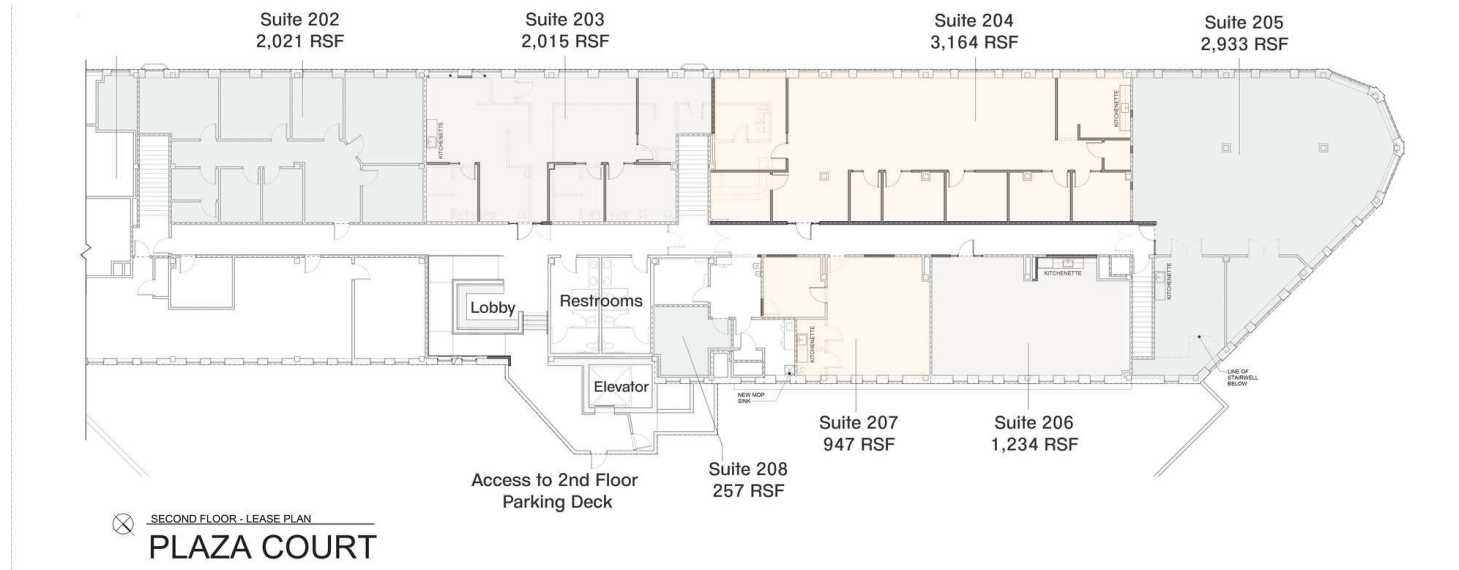
# Barta Bailey

## PLAZA COURT OFFICE INTERIOR PHOTOS



# Barta Bailey

## PLAZA COURT OFFICE FLOOR PLAN



### Available Spaces

Suite	Size (SF)	Lease Type	Lease Rate	Description
Suite 203	2,015 SF	NNN	\$24.00 SF/yr	3 private offices, conference room & kitchenette
Suite 206	1,234 - 2,181 SF	NNN	\$24.00 SF/yr	Open floor plan with kitchenette
Suite 207	947 - 2,181 SF	NNN	\$24.00 SF/yr	Open floor plan with kitchenette & conference room

# Barta Bailey

## PLAZA COURT OFFICE LOCATION

