

**CUSHMAN &  
WAKEFIELD**

**FOR SUBLEASE**

PROFESSIONAL OFFICE SPACE

**MING OFFICE PARK**  
**5500**  
**MING AVENUE**  
BAKERSFIELD, CA 93309



## PROPERTY HIGHLIGHTS

- Ming Office Park offers a chance to lease turnkey suites with new interiors ready for immediate occupancy.
- Campus-like setting features a beautifully designed courtyard with fountains, lush landscaping, and seating areas for a serene workplace.
- Ming Office Park offers abundant free parking directly adjacent to tenant suites, with available options for covered parking.

## MING OFFICE PARK

### PROPERTY FEATURES

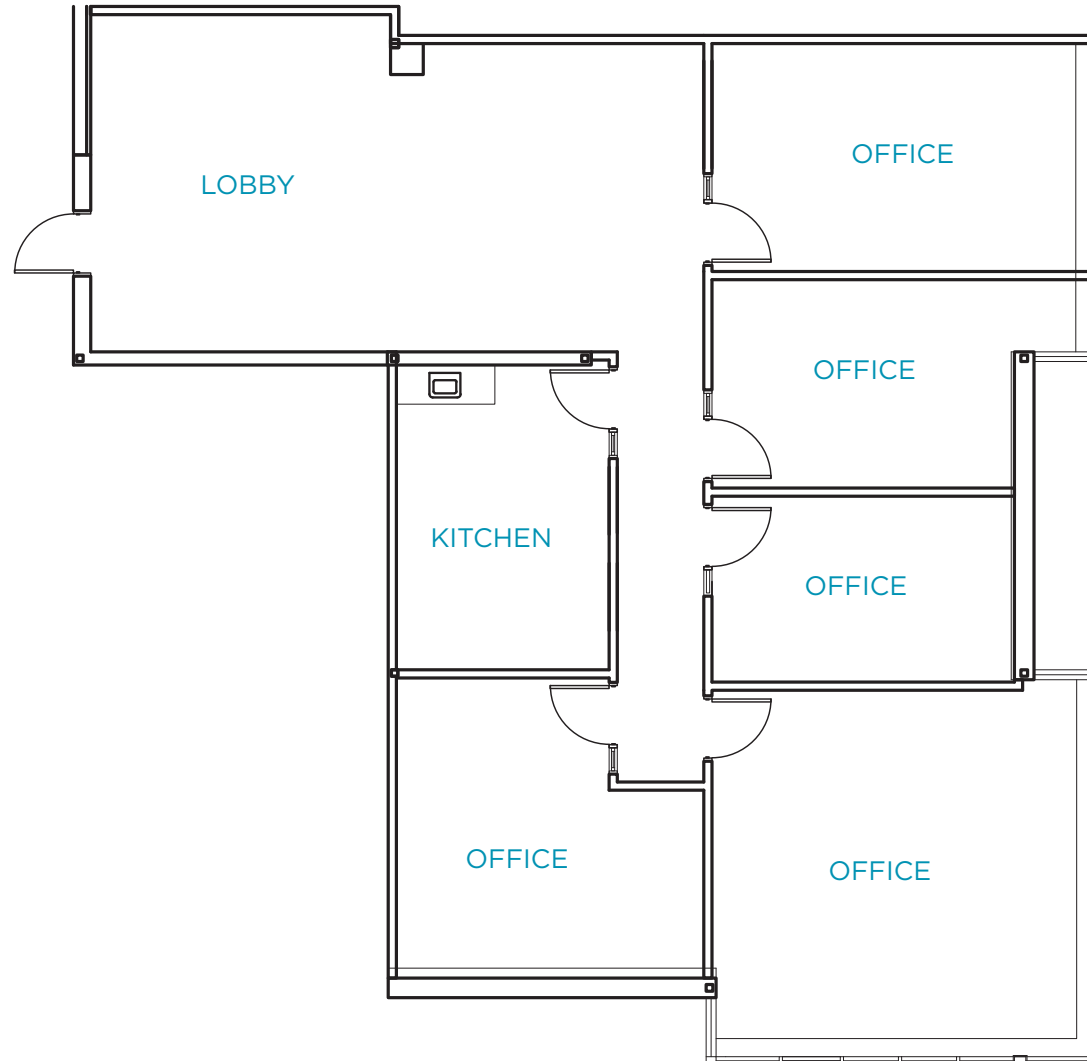
<b>Premises:</b>	5500 Ming Avenue, Suite 485
<b>Space Available:</b>	±2,383 RSF
<b>Asking Rent:</b>	\$2.00/sf which includes all utilities
<b>Master Lease Expiration:</b>	September 2026, Available longer as well.



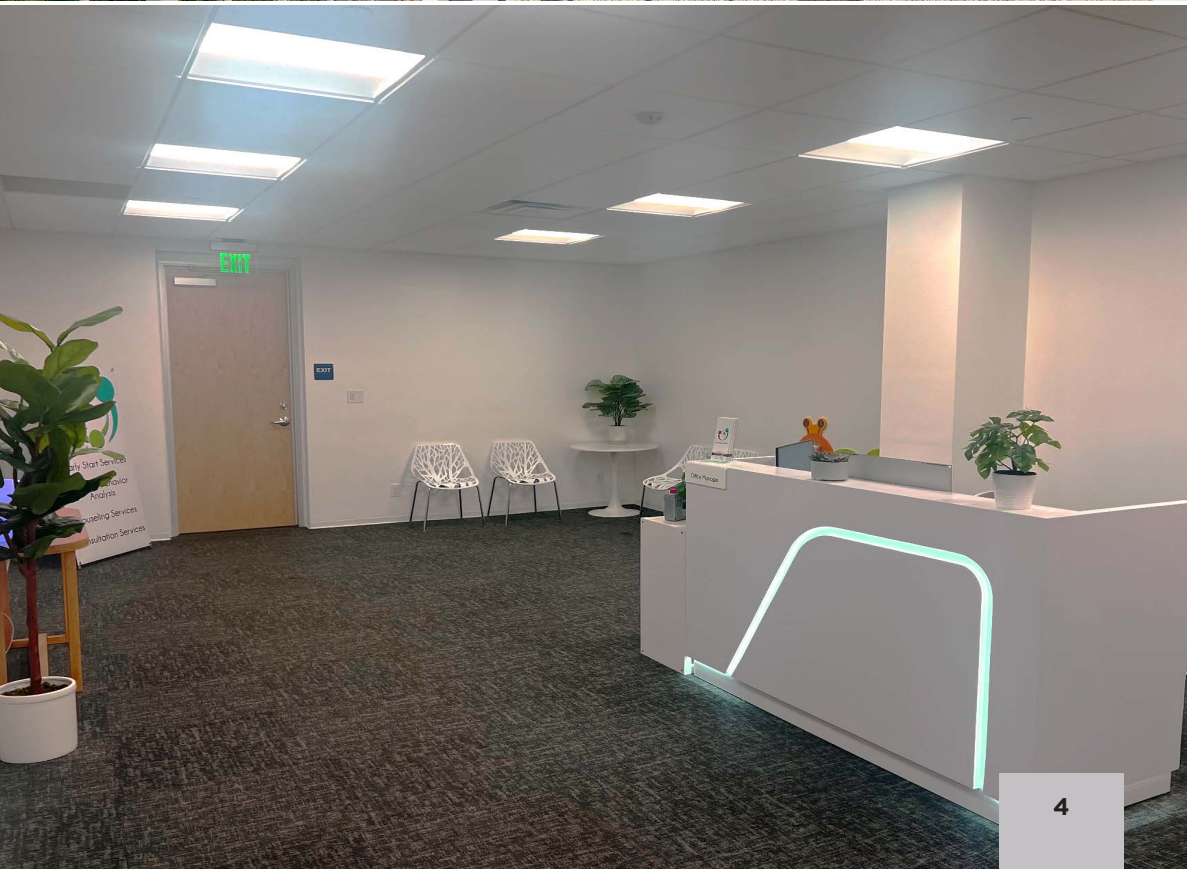
MING OFFICE PARK

# FLOOR PLAN

SUITE 485 :  
±2,383 RSF  
TOTAL AVAILABLE









MING OFFICE PARK

# AERIAL MAP



MING AVENUE

5

MING AVENUE





**CUSHMAN &  
WAKEFIELD**

## CONTACT INFO

**Jeff Andrew**

Executive Director

+1 661 633 3827

[jeff.andrew@cushwake.com](mailto:jeff.andrew@cushwake.com)

Lic. 00941323

5060 California Avenue

Suite 1000

Bakersfield, CA 93309

Lic. 01880493

[cushmanwakefield.com](https://www.cushmanwakefield.com)

©2021 Cushman & Wakefield. All rights reserved. The information contained in this communication is strictly confidential. This information has been obtained from sources believed to be reliable but has not been verified. NO WARRANTY OR REPRESENTATION, EXPRESS OR IMPLIED, IS MADE AS TO THE CONDITION OF THE PROPERTY (OR PROPERTIES) REFERENCED HEREIN OR AS TO THE ACCURACY OR COMPLETENESS OF THE INFORMATION CONTAINED HEREIN, AND SAME IS SUBMITTED SUBJECT TO ERRORS, OMISSIONS, CHANGE OF PRICE, RENTAL OR OTHER CONDITIONS, WITHDRAWAL WITHOUT NOTICE, AND TO ANY SPECIAL LISTING CONDITIONS IMPOSED BY THE PROPERTY OWNER(S). ANY PROJECTIONS, OPINIONS OR ESTIMATES ARE SUBJECT TO UNCERTAINTY AND DO NOT SIGNIFY CURRENT OR FUTURE PROPERTY PERFORMANCE.