



# For Sublease

**9440 Carroll Park Drive, San Diego CA 92121**

Grant Schoneman

+1 858 410 1252

[grant.schoneman@jll.com](mailto:grant.schoneman@jll.com)

RE license #01516695

Tim Olson

+1 858 410 1253

[tim.olson@jll.com](mailto:tim.olson@jll.com)

RE license #01364117

Taylor DeBerry

+1 858 410 6392

[taylor.deberry@jll.com](mailto:taylor.deberry@jll.com)

RE license #02014850



Jones Lang LaSalle Brokerage, Inc. RE license #01856260

## LAB SPACE AVAILABLE

### Premise:

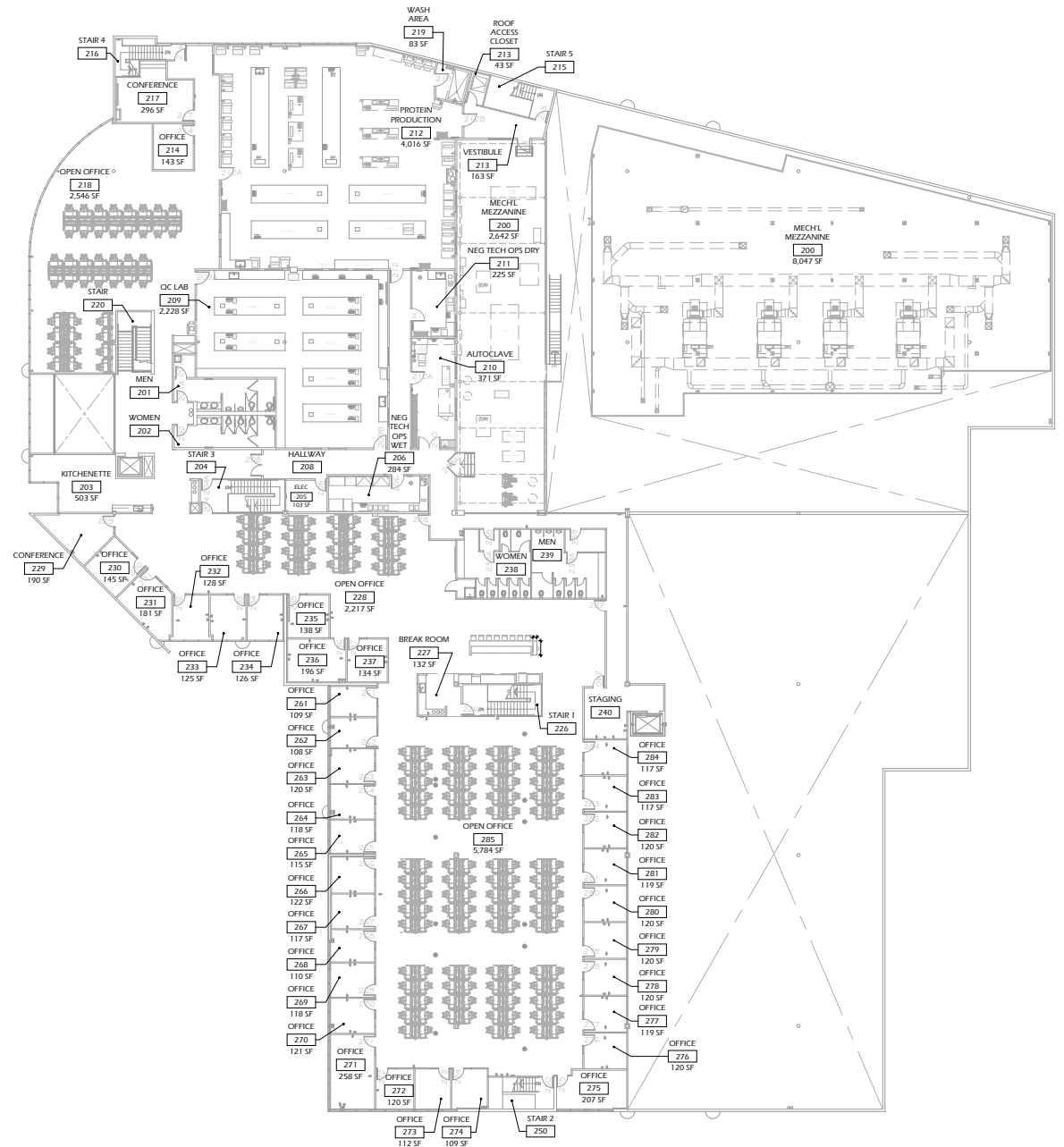
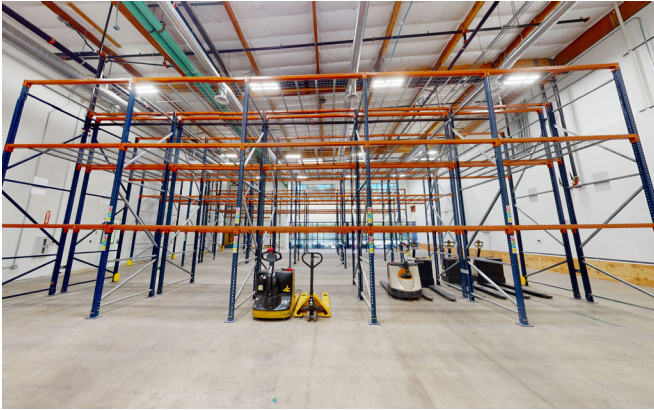
- 1st floor: 57,287 SF
- 2nd floor: 39,875 SF
- Master lease expires August 31, 2027

## PROPERTY HIGHLIGHTS

- Generic Lab Build-Out – Biology lab, Production labs, Dry-Rooms
- Conditioned Warehouse Space
- Furnished office space

**Asking rate:** \$2.25/sf NNN





**Grant Schoneman**  
 +1 858 410 1252  
[grant.schoneman@jll.com](mailto:grant.schoneman@jll.com)  
 RE license #01516695

**Tim Olson**  
 +1 858 410 1253  
[tim.olson@jll.com](mailto:tim.olson@jll.com)  
 RE license #01364117

**Taylor DeBerry**  
 +1 858 410 6392  
[taylor.deberry@jll.com](mailto:taylor.deberry@jll.com)  
 RE license #02014850



**Grant Schoneman**  
+1 858 410 1252  
[grant.schoneman@jll.com](mailto:grant.schoneman@jll.com)  
RE license #01516695

**Tim Olson**  
+1 858 410 1253  
[tim.olson@jll.com](mailto:tim.olson@jll.com)  
RE license #01364117

**Taylor DeBerry**  
+1 858 410 6392  
[taylor.deberry@jll.com](mailto:taylor.deberry@jll.com)  
RE license #02014850

Although information has been obtained from sources deemed reliable, neither Owner nor JLL makes any guarantees, warranties or representations, express or implied, as to the completeness or accuracy as to the information contained herein. Any projections, opinions, assumptions or estimates used are for example only. There may be differences between projected and actual results, and those differences may be material. The Property may be withdrawn without notice. Neither Owner nor JLL accepts any liability for any loss or damage suffered by any party resulting from reliance on this information. If the recipient of this information has signed a confidentiality agreement regarding this matter, this information is subject to the terms of that agreement. ©2023. Jones Lang LaSalle IP, Inc. All rights reserved.