

FOR SALE

CHISHOLM LANDING

1229 NORTHWEST 122ND STREET, OKLAHOMA
CITY, OK 73114



BANTA

Property Group

BANTA PROPERTY GROUP, LLC

405.840.1600

BANTAPROPERTYGROUP.COM

308 SW 25TH, OKLAHOMA CITY, OK 73109

GREG BANTA

405.823.3026

GREG@BANTAPROPERTYGROUP.COM

ANNA FRESONKE

405.535.8156

ANNA@BANTAPROPERTYGROUP.COM

MONICA FEIERABEND

918.327.9182

MONICA@BANTAPROPERTYGROUP.COM

CHISHOLM LANDING

1229 NORTHWEST 122ND STREET, OKLAHOMA CITY, OK 73114



OFFERING SUMMARY

Condos Starting At	\$435,000
Building Size:	19,500 SF
Available SF:	1,950 - 9,750 SF
Lot Size:	3.81 Acres
Price / SF:	\$223.00
Year Built:	2025
Zoning:	SPUD - 1536
Traffic Count:	17,067

PROPERTY OVERVIEW

Chisholm Landing — Flexible Space for Business and Lifestyle, Reinvented!

Chisholm Landing offers a rare opportunity to own or lease modern garage condo space designed to support both business and lifestyle uses. Ideal for workspaces, executive offices, showrooms, or private hobby and storage space, these units are highly adaptable to a wide range of needs. Units feature ceiling heights up to 30 feet, oversized 14' x 14' garage doors, and open, customizable floor plans suitable for office buildouts, workshops, secure storage, or creative studios. Many owners utilize their space as a business headquarters or premium “fun space” for vehicles, boats, or recreational equipment.

Construction highlights include quality materials and modern systems such as insulated sandwich panels, spray-foam insulated roofs, LED lighting, optional fully furnished bathrooms, and 3-ton HVAC systems with WiFi-enabled thermostats. Additional features include oversized walk doors, covered awnings, and durable 5" reinforced concrete slabs.

The gated development offers security cameras, natural gas, OG&E electric, on-site fire hydrants, and efficient unit layouts with approximately 50' depths.

Unit sizes range from 1,950 SF to 9,750 SF, with smaller units offering approximately 1,500 SF of ground-floor space plus a 450 SF mezzanine. Units can be combined to accommodate larger requirements

GREG BANTA

405.823.3026

GREG@BANTAPROPERTYGROUP.COM

ANNA FRESONKE

405.535.8156

ANNA@BANTAPROPERTYGROUP.COM

MONICA FEIERABEND

918.327.9182

MONICA@BANTAPROPERTYGROUP.COM



CHISHOLM LANDING

1229 NORTHWEST 122ND STREET, OKLAHOMA CITY, OK 73114



GREG BANTA

405.823.3026

GREG@BANTAPROPERTYGROUP.COM

ANNA FRESKNE

405.535.8156

ANNA@BANTAPROPERTYGROUP.COM

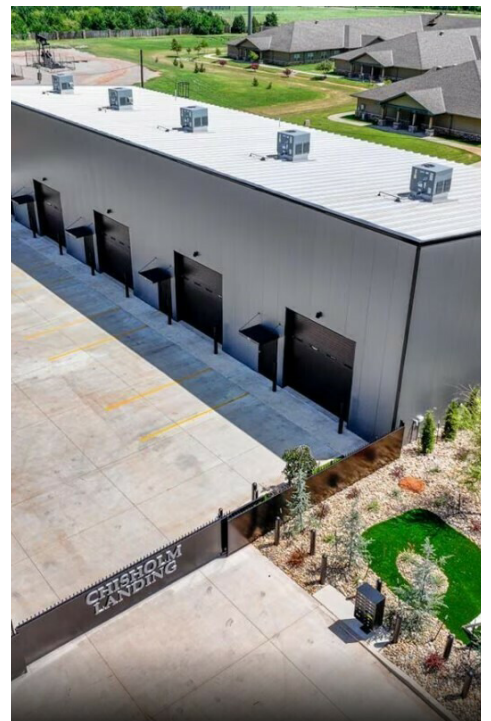
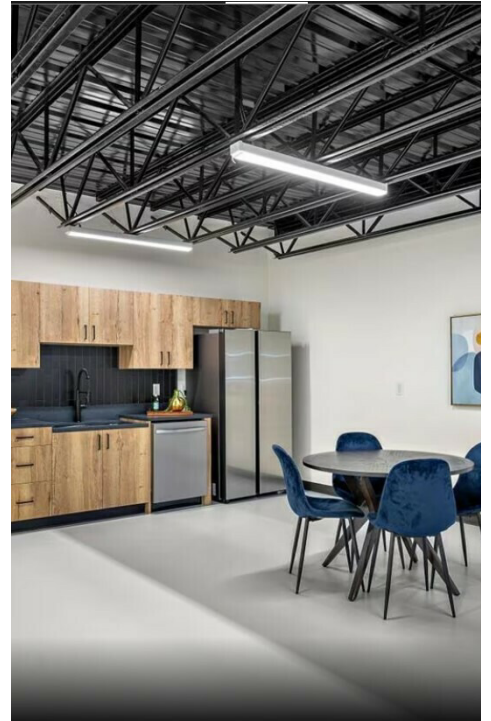
MONICA FEIERABEND

918.327.9182

MONICA@BANTAPROPERTYGROUP.COM

CHISHOLM LANDING

1229 NORTHWEST 122ND STREET, OKLAHOMA CITY, OK 73114



GREG BANTA

405.823.3026

GREG@BANTAPROPERTYGROUP.COM

ANNA FRESKNE

405.535.8156

ANNA@BANTAPROPERTYGROUP.COM

MONICA FEIERABEND

918.327.9182

MONICA@BANTAPROPERTYGROUP.COM

CHISHOLM LANDING

1229 NORTHWEST 122ND STREET, OKLAHOMA CITY, OK 73114



GREG BANTA

405.823.3026

GREG@BANTAPROPERTYGROUP.COM

ANNA FRESONKE

405.535.8156

ANNA@BANTAPROPERTYGROUP.COM

MONICA FEIERABEND

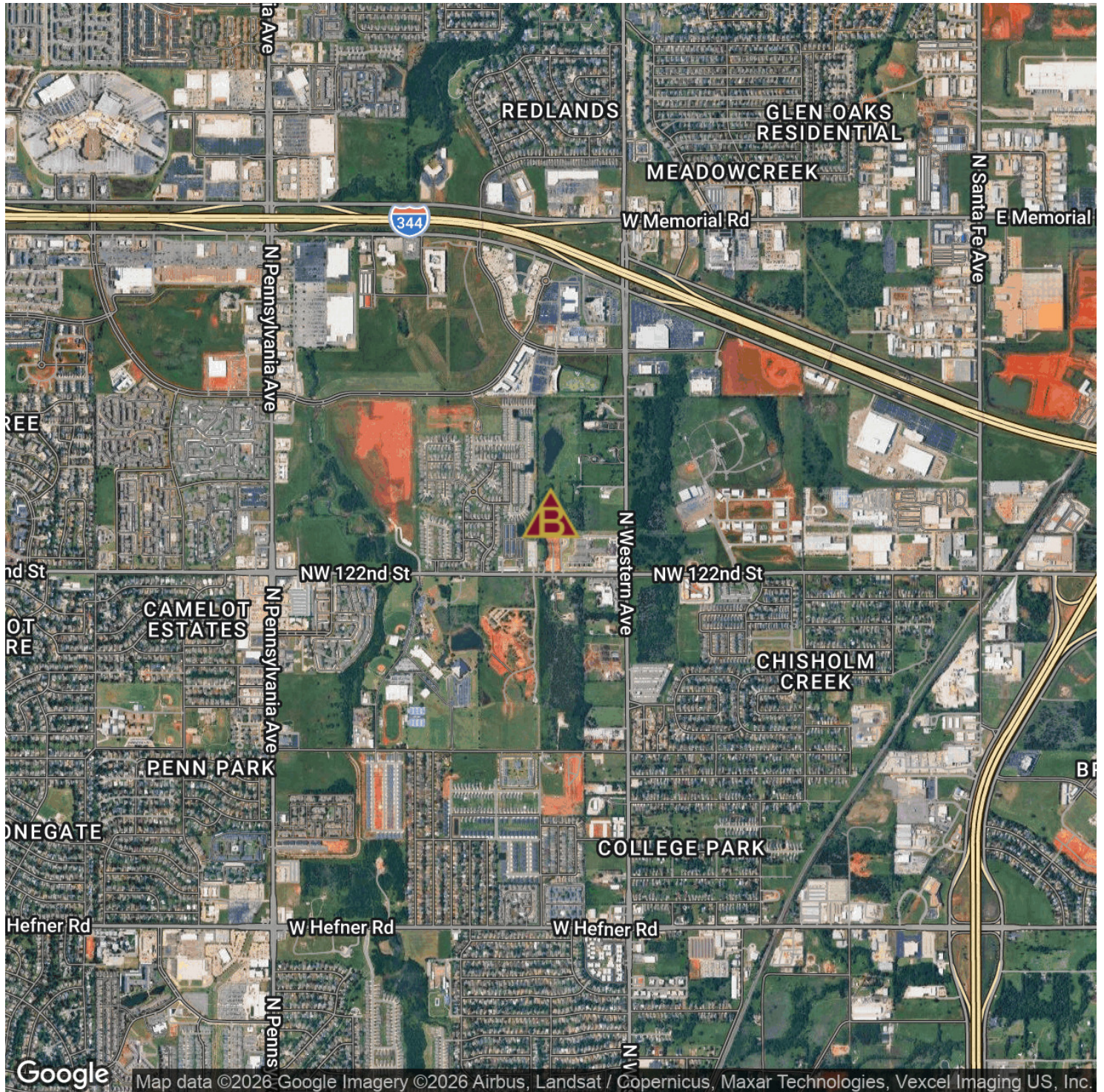
918.327.9182

MONICA@BANTAPROPERTYGROUP.COM



CHISHOLM LANDING

1229 NORTHWEST 122ND STREET, OKLAHOMA CITY, OK 73114



GREG BANTA

405.823.3026

GREG@BANTAPROPERTYGROUP.COM

ANNA FRESNKE

405.535.8156

ANNA@BANTAPROPERTYGROUP.COM

MONICA FEIERABEND

918.327.9182

MONICA@BANTAPROPERTYGROUP.COM

