

For Lease or Build to Suit  
Adjacent to Super Walmart

SEQ Main St. & Escondido Ave,  
Hesperia, California 92345



LEA CLAY PARK  
949-521-7437  
lea@axiomra.com  
CA DRE License# 01087365

STEPHANIE SKRBIN  
949-521-7436  
stephanie@axiomra.com  
CA DRE License# 01405095

axiomra.com

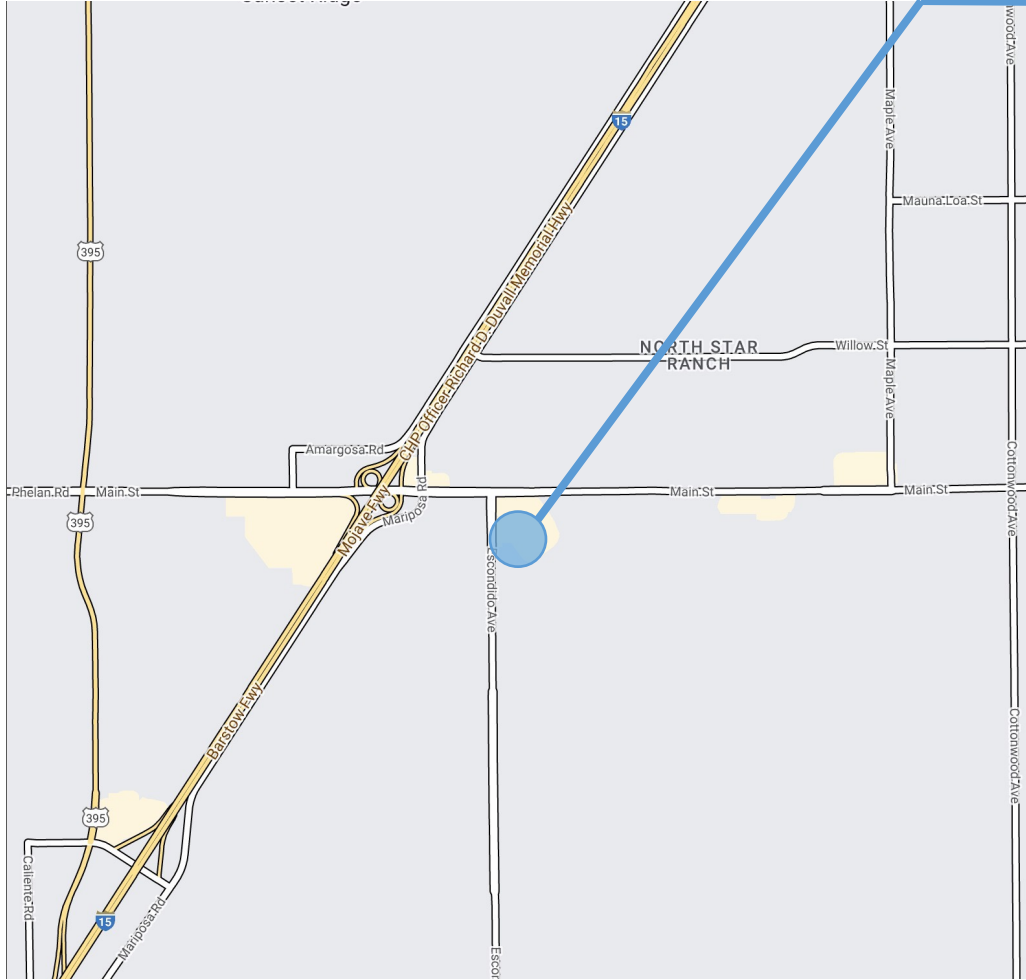


Note: While the information contained herein is from sources deemed reliable and is believed to be correct, it is not in any way warranted or guaranteed by Axiom Retail Advisors.



For Lease or Build to Suit  
Adjacent to Super Walmart

SEQ Main St. & Escondido Ave,  
Hesperia, California 92345



### Property Highlights:

- Approximately 11 acres adjacent to Super Walmart for lease or sale, all or part
- Across the street from new Kaiser Permanente facility
- Main Street averages 64,017 CPD
- Direct access to I-15
- Proximate to several high performing national retailers

### Demographics:

2022 Estimates	1 MILE	3 MILE	5 MILE
Population	8,174	39,419	122,814
Median HH Income	\$85,633	\$76,630	\$68,344



LEA CLAY PARK  
949-521-7437  
lea@axiomra.com  
CA DRE License# 01087365

STEPHANIE SKRBIN  
949-521-7436  
stephanie@axiomra.com  
CA DRE License# 01405095

axiomra.com



Note: While the information contained herein is from sources deemed reliable and is believed to be correct, it is not in any way warranted or guaranteed by Axiom Retail Advisors.



For Lease or Build to Suit  
Adjacent to Super Walmart

SEQ Main St. & Escondido Ave,  
Hesperia, California 92345



LEA CLAY PARK  
949-521-7437  
lea@axiomra.com  
CA DRE License# 01087365

STEPHANIE SKRBIN  
949-521-7436  
stephanie@axiomra.com  
CA DRE License# 01405095

axiomra.com

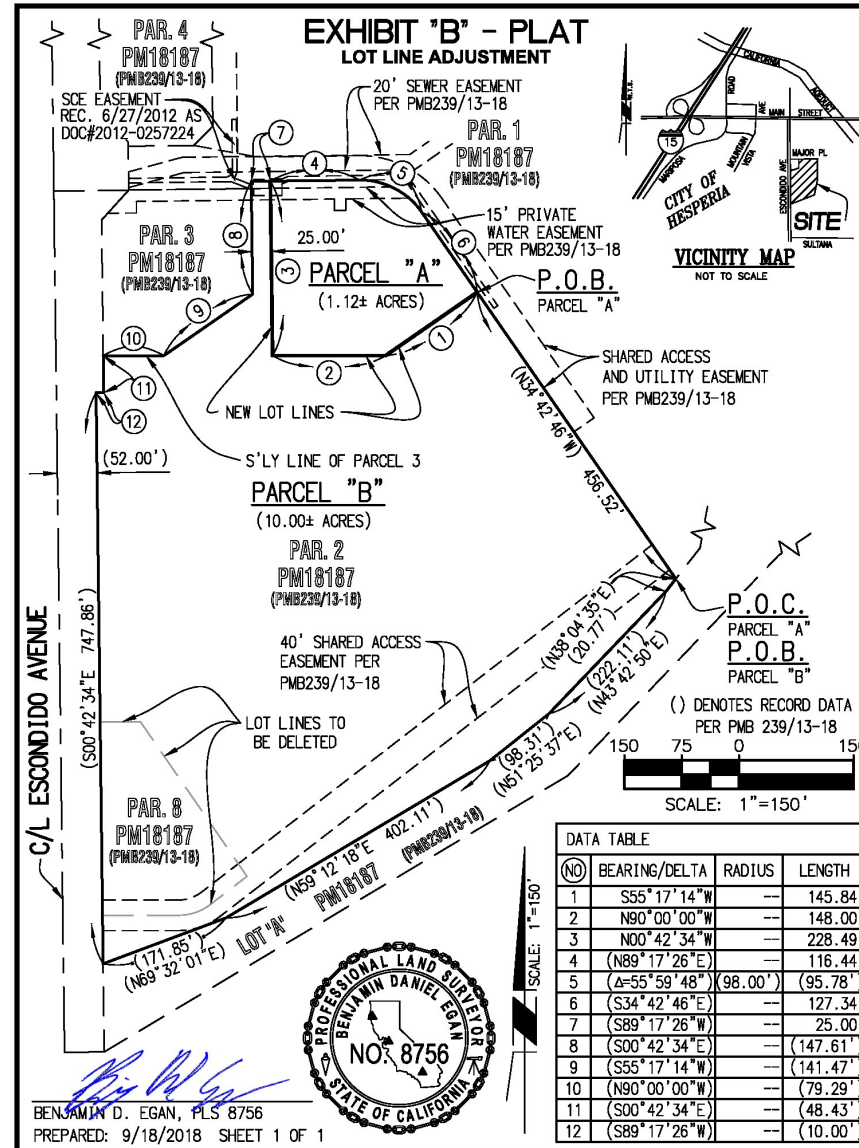


Note: While the information contained herein is from sources deemed reliable and is believed to be correct, it is not in any way warranted or guaranteed by Axiom Retail Advisors.



For Lease or Build to Suit  
Adjacent to Super Walmart

SEQ Main St. & Escondido Ave,  
Hesperia, California 92345



LEA CLAY PARK  
949-521-7437  
lea@axiomra.com  
CA DRE License# 01087365

STEPHANIE SKRBIN  
949-521-7436  
stephanie@axiomra.com  
CA DRE License# 01405095

axiomra.com

