



# 111 Town Square Place

Jersey City, NJ 07310

For Sublease

Partial  
4<sup>th</sup> Floor

7,452 RSF  
Available



# PROPERTY HIGHLIGHTS

111 TOWN SQUARE PLACE  
JERSEY CITY, NJ 07310

## Building Details:

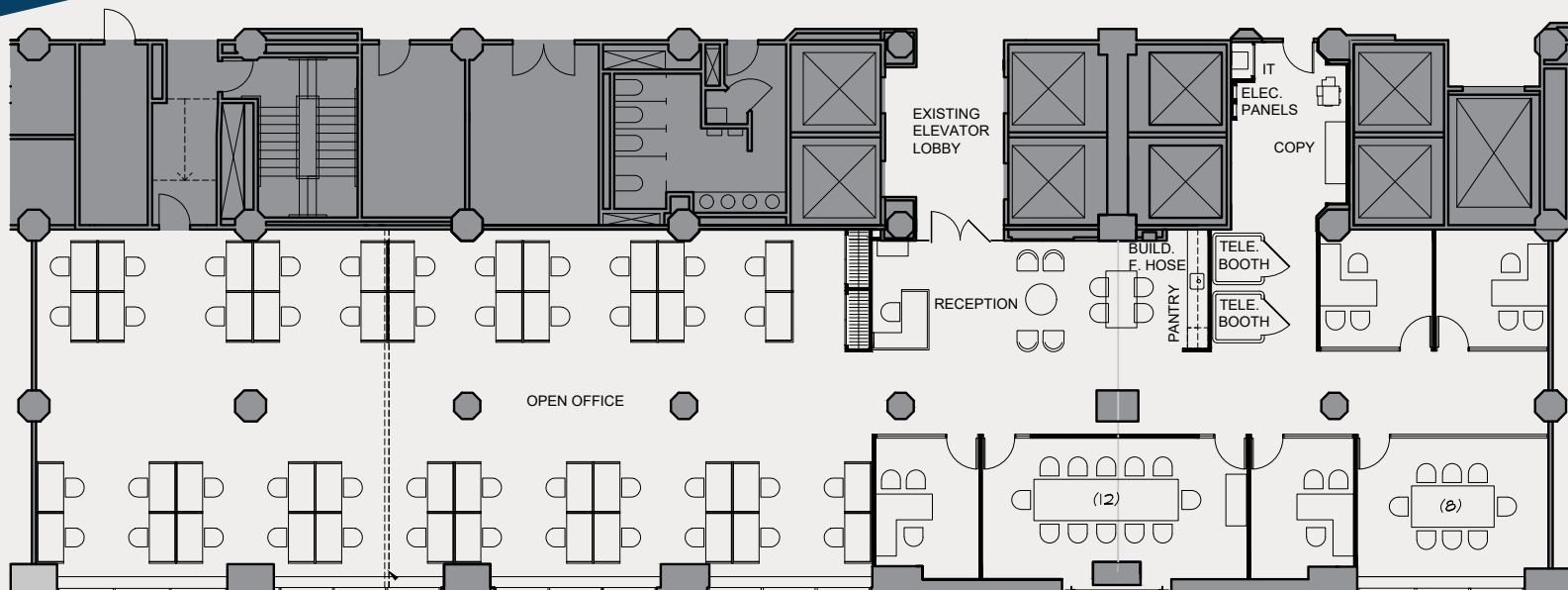
- Exclusive tenant-only amenity center will feature conferencing and lounge space with a full pantry
- Prime location: Newport PATH one stop from Manhattan. Light Rail access, walkway connection to Hoboken, 20 minutes from Newark Liberty International Airport
- Parking available on street and in the 24/7 secure parking garage across the street
- Disaster Recovery/Business Continuity space
- Over 16 telecommunications carriers
- Integrated commercial, residential, hospitality, retail, and dining amenities: [www.newportnj.com](http://www.newportnj.com)
- Robust mission critical infrastructure services: Generator (EPS) power via fully maintained 10 MW generator system located on the roof. Ample supplemental colling for 24/7/365 and mission critical requirements.
- 24/7/365 secure site access

Term: February 2028

Rent: Upon Request

Available: Within 30 Days

## Partial 4<sup>th</sup> Floor | 7,452 RSF



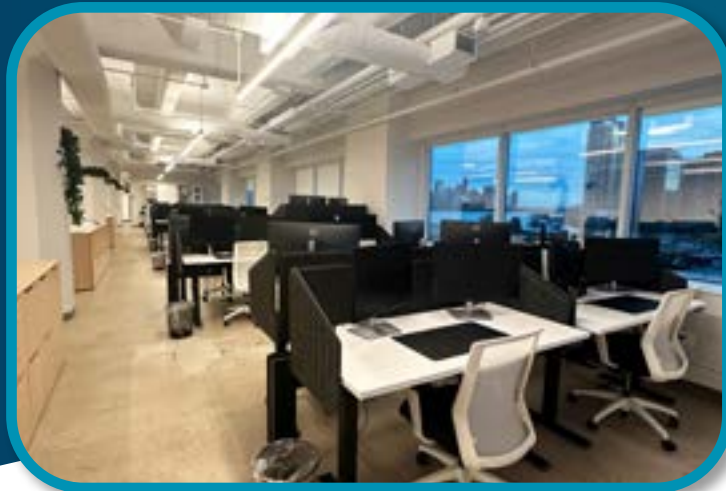
## Space Notes:

- Creative installation with high exposed ceilings and concrete floors
- Layout includes 46 sit-stand benching seats, 4 huddle rooms/private offices, 12-person board room, 8-person conference room, large open pantry, and lounge/soft seating area



# PROPERTY PHOTOS

111 TOWN SQUARE PLACE  
JERSEY CITY, NJ 07310



**For more information,  
please contact:**

**Mina Shehata**

+1 201 460 3364

[mina.shehata@cushwake.com](mailto:mina.shehata@cushwake.com)

**Gary Ceder**

+1 212 698 5631

[gary.ceder@cushwake.com](mailto:gary.ceder@cushwake.com)