



**MODERN  
BULK  
WAREHOUSE  
AVAILABLE!**

# **NORTHWEST 75**

## **LOGISTICS CENTER - BUILDING A**

1200 Cassville White Road, White, GA 30184

311,660 SF Available

[www.idilogistics.com](http://www.idilogistics.com)

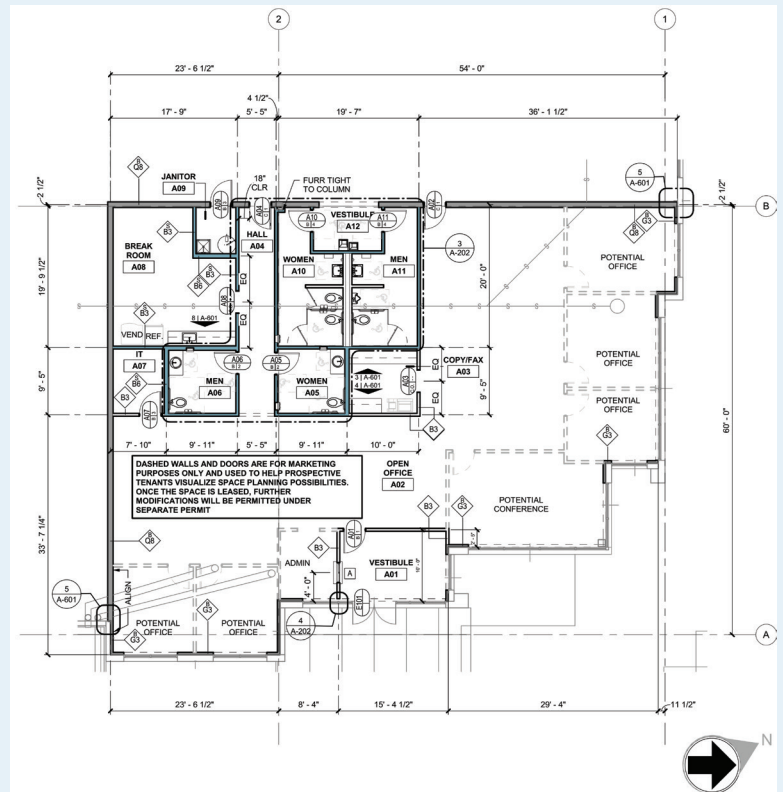
 **IDI Logistics**



Northwest 75 Logistics Center is an 151-acre master-planned park located 45 minutes north of Atlanta in Bartow County, offering Freeport Inventory Tax Exemption. Additionally, with immediate access to one of the state's largest interstates, the site is a prime location with high accessibility and a readily available labor pool.



## 4,152 SF SPEC OFFICE PLAN



# 311,660

available square feet

# AVAILABLE 150,000 SF UP TO 311,660 SF

SUPERIOR ACCESS TO I-75

FREEMPORT TAX EXEMPTION

DIVERSE & DYNAMIC POPULATION

4,152 SF SPEC OFFICE

APPALACHIAN REGIONAL PORT: 47.5 MILES

INTERSTATE 285: 40 MILES

CHATTANOOGA, TN: 70.2 MILES

**BUILDING TYPE:** Rear-Load

**CLEAR HEIGHT:** 36' Clear at first column line

**AUTO PARKING:** 280 spaces

**TRAILER PARKING:** 74 spaces

**DOCK DOORS:** 59 Loading Docks (9' x 10')  
2 Drive-In Doors (14' x 16')  
Twenty-Two (22) 40,000 LB levelers located every 4th door

**BUILDING DIMENSIONS:** 320'D x 972'W

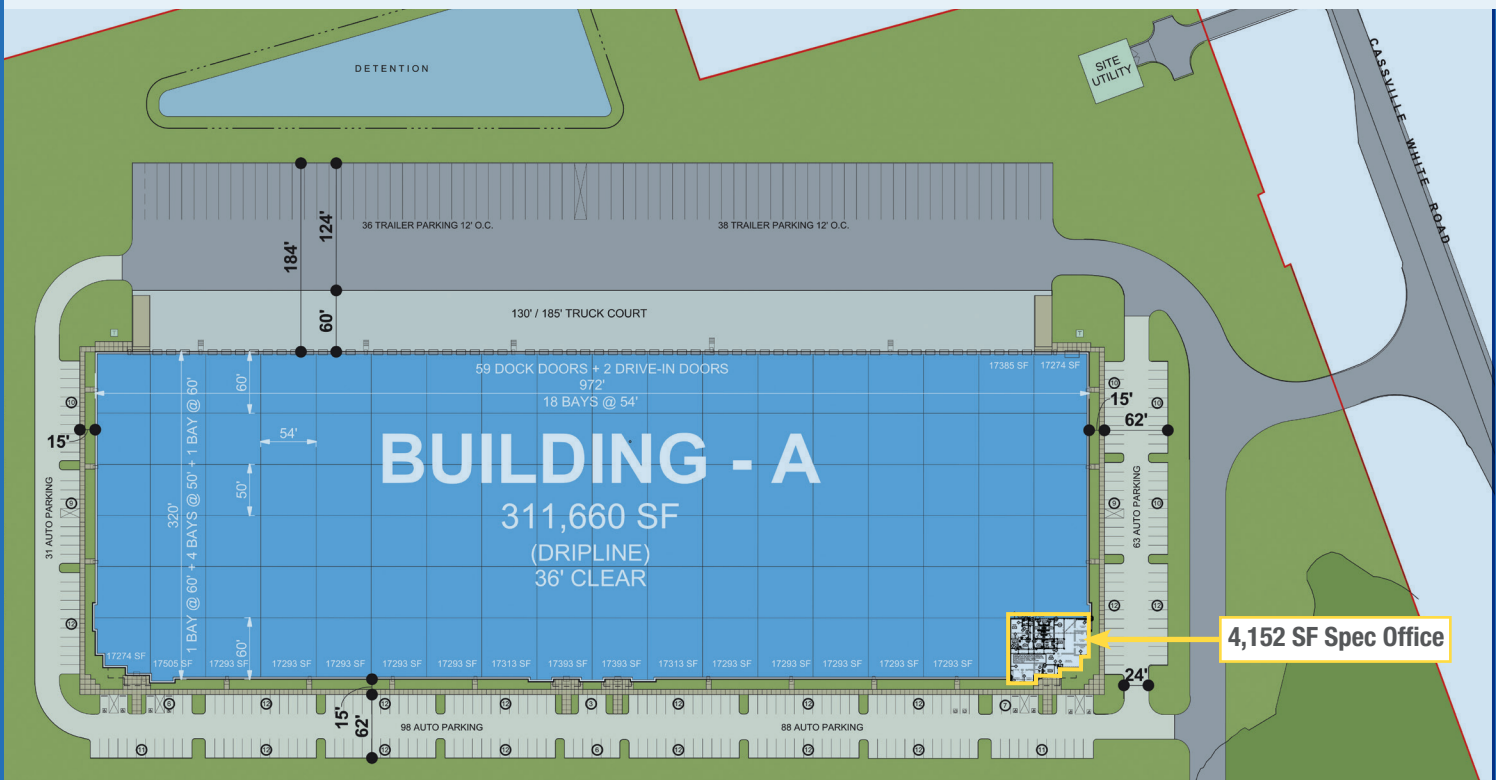
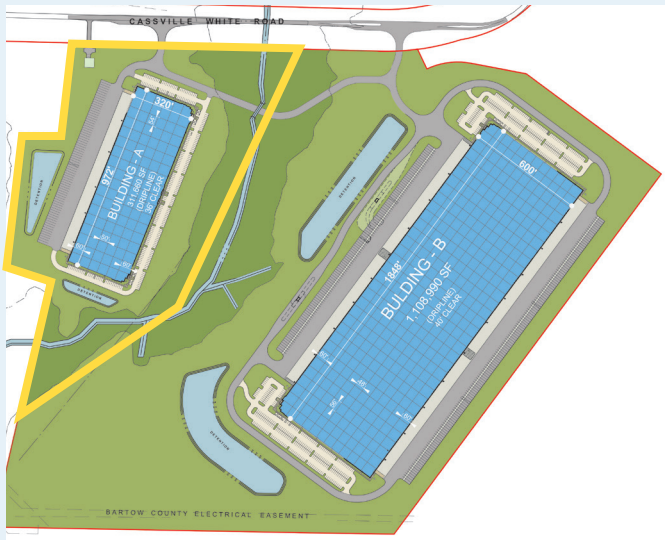
**TYPICAL BAY SIZE:** 50'D x 54'W

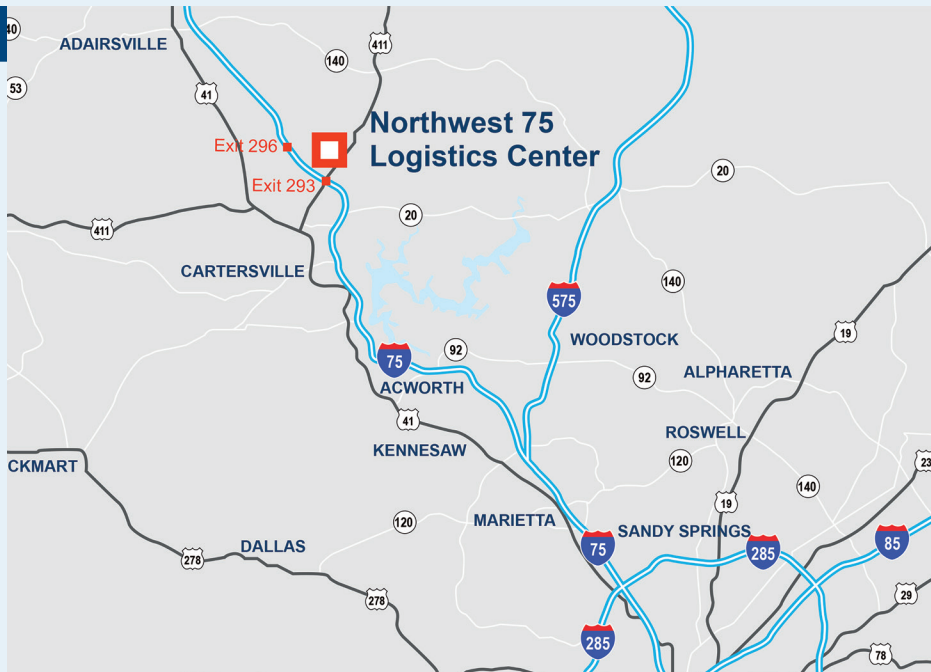
**STAGING BAY SIZE:** 60'D x 54'W

**TRUCK COURT:** 130' / 185'

**LIGHTING:** 292 LED high bay lights, sensor controlled, 30 FC with 5' fixture whips

**ELECTRICAL:** Two (2) 1,600 AMP main switchboards





## NOTABLE DISTANCES

### AIR

Cobb County Int'l Airport .....	27 miles
Hartsfield-Jackson Int'l Airport ...	62 miles
Chattanooga Airport .....	68 miles

### INTERSTATES

I-75 .....	2 miles
I-285 .....	40 miles
I-20 .....	48 miles
I-85N .....	53 miles
I-85S .....	60 miles
I-16 .....	133 miles
I-95 .....	338 miles

### PORTS

Savannah, GA .....	298 miles
Charleston, SC .....	362 miles
Brunswick, GA .....	366 miles
Jacksonville, FL .....	399 miles
Norfolk, VA .....	603 miles
Miami, FL .....	717 miles

Located approximately two miles west of I-75, Northwest Logistics Center provides excellent access to an unparalleled level of exposure and ease of access for a large distribution user.



For more information, or to set up a tour, please contact:



**Billy Snowden, SIOR**  
 +1.404.442.2839  
 bsnowden@lee-associates.com



**Brad Pope, SIOR**  
 +1.404.995.2261  
 brad.pope@jll.com

**Nick Faber**  
 +1.404.479.1642  
 nick.faber@idilogistics.com