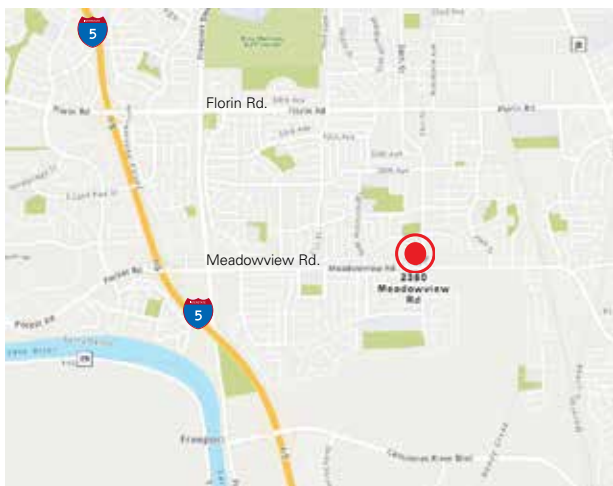




Ground Lease Commercial Corner Lot

**2380 MEADOWVIEW ROAD
SACRAMENTO, CA**



HIGHLIGHTS

- ±39,000 Square Foot Parcel
- APN: 053-0021-008
- General Commercial (C2) Zoning
- Clean Environmental Report
- Gateway to Delta Shores Master Plan
- Signalized Intersection

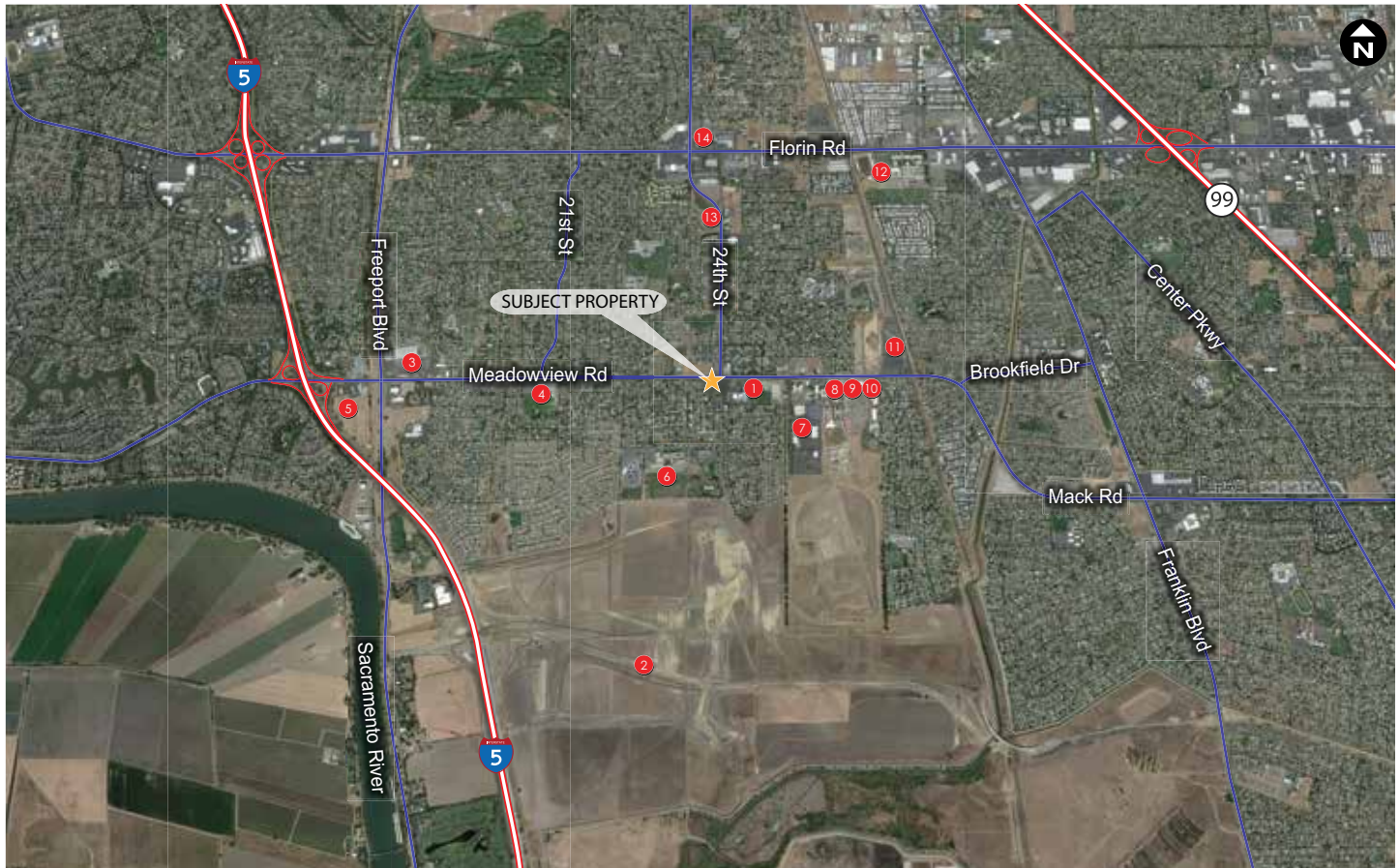
For information, please contact:

Ken Noack, Jr.
Senior Managing Director
t 916-747-6442
ken.noack@nmrk.com

nmrk.com

NEWMARK

The distributor of this communication is performing acts for which a real estate license is required. The information contained herein has been obtained from sources deemed reliable but has not been verified and no guarantee, warranty or representation, either express or implied, is made with respect to such information. Terms of sale or lease and availability are subject to change or withdrawal without notice. 14-0386 / 12/21



LEGEND

- | | |
|---|-------------------------------------|
| 1. Meadowview Community Center | 8. Sacramento Corporate Center |
| 2. Delta Shores Master Plan | 9. CA National Guard |
| 3. Home Depot, Starbucks, IHOP, Wendy's | 10. CA Dept. of Food & Agriculture |
| 4. Freeport Elementary School | 11. Meadowview Station (Light Rail) |
| 5. Klotz Commercial Park | 12. Luther Burbank Community Ctr |
| Shell, McDonalds, Car Wash, In-N-Out Burger | 13. MLK Library |
| 6. St. Anne Catholic School | 14. Walgreens |
| 7. Meadowview Service Complex | |

For information, please contact:

Ken Noack, Jr.

Senior Managing Director

t 916-747-6442

ken.noack@nmrk.com

NEWMARK