

For sublease

200 Minuteman Road Andover, MA
Minuteman Office Park

Plug & play sublease opportunity



25,896 SF available at 200 Minuteman

- **Availability:** 2nd Floor – 25,896 SF
- **Available:** Immediately
- **Term:** Through January 31, 2029
- **Furniture:** Available

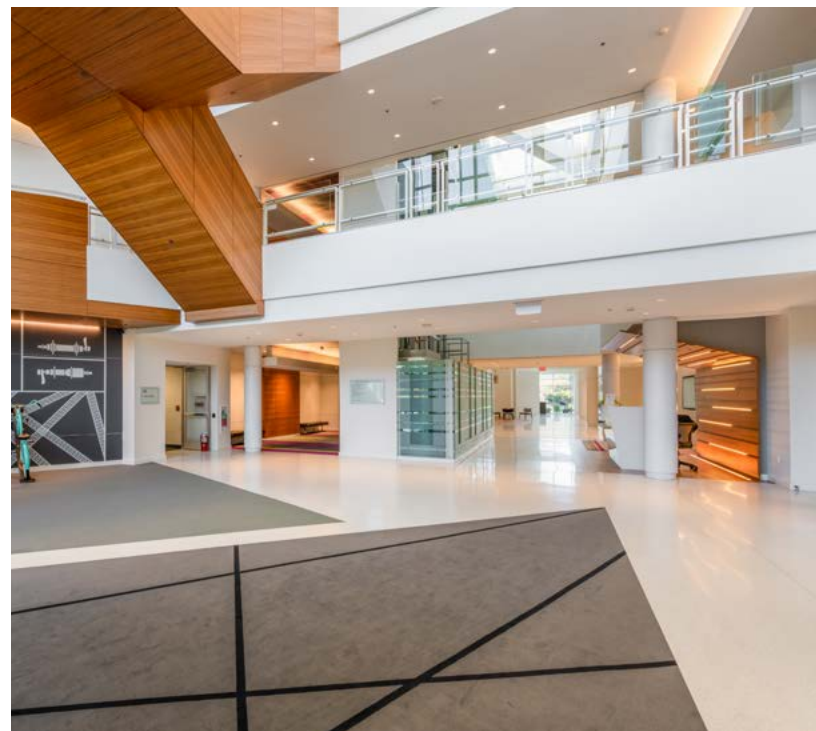
Minuteman Office Park is a 127-acre office community located off I-93 at Exit 45 and seconds away from I-495. 200 Minuteman features an amenity hub that includes updated common areas, fitness center with lockers, bike storage, and a cafeteria.

Indoor amenities

- Cafeteria
- Lounge/game room
- Starbucks coffee kiosk
- Fitness center with locker rooms
- Indoor bike storage

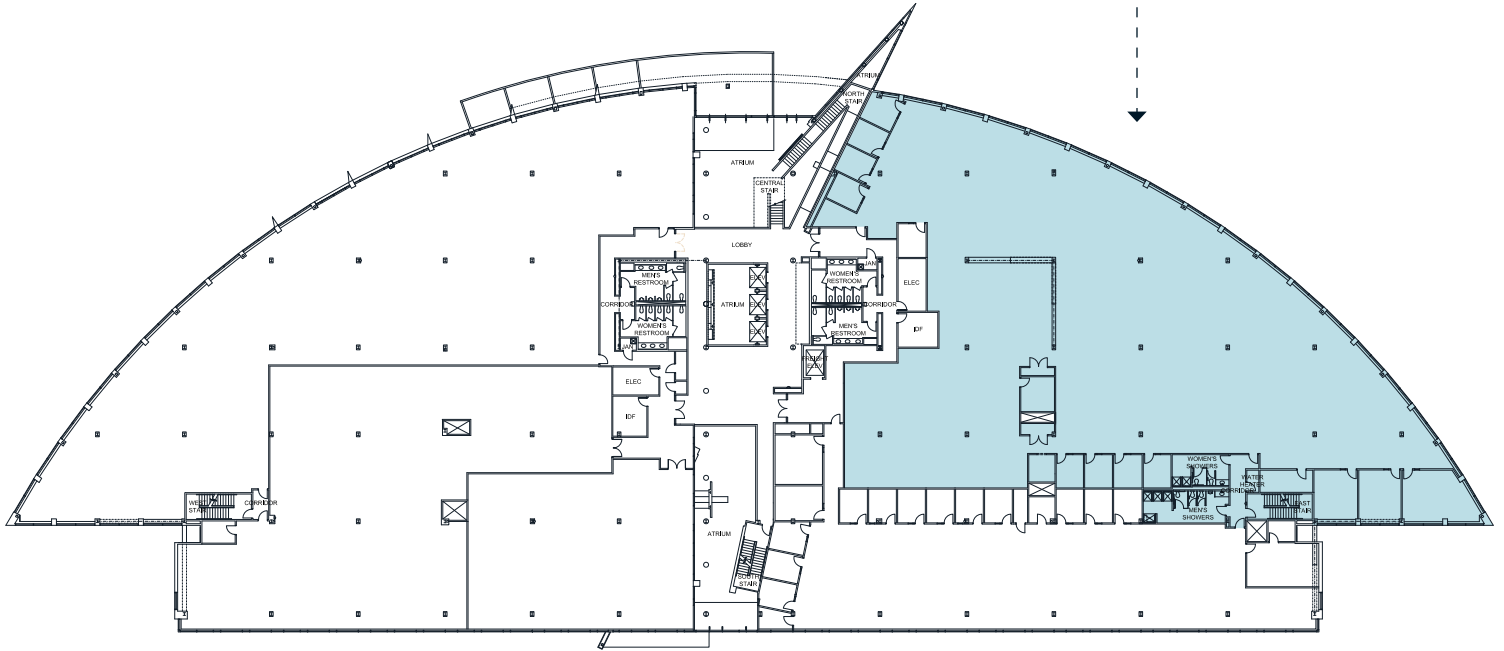
Outdoor amenities

- Open air pavilion
- Fitness green
- Walking paths
- Running/cycling trails



2nd Floor

25,896 SF



For more information, contact:**Tom Kent**

Tom.Kent@jll.com
617 840 0630

Jamey Lipscomb

James.Lipscomb@jll.com
617 531 4109

Brian Tisbert

Brian.Tisbert@jll.com
617 531 4115

Carly Kiernan

Carly.Kiernan@jll.com
617 531 4142

For over 200 years, JLL (NYSE: JLL), a leading global commercial real estate and investment management company, has helped clients buy, build, occupy and invest in a variety of commercial, industrial, hotel, residential and retail properties. A Fortune 500 company with annual revenue of \$20.9 billion and operations in over 80 countries around the world, our more than 103,000 employees bring the power of a global platform combined with local expertise. Driven by our purpose to shape the future of real estate for a better world, we help our clients, people and communities SEE A BRIGHTER WAYSM. JLL is the brand name, and a registered trademark, of Jones Lang LaSalle Incorporated. For further information, visit jll.com.