

Mountain View Business Center | Simi Valley, CA



600 E. Cochran Street
2,772 SF - 20,497 SF

Exclusively Offered by:

Gary Seaton

Executive Vice President
805.277.4021 direct
gseaton@naicapital.com
Cal DRE Lic #00713834

Scott Linklater

Vice President
805.277.4024 direct
slinklater@naicapital.com
Cal DRE Lic #01431467

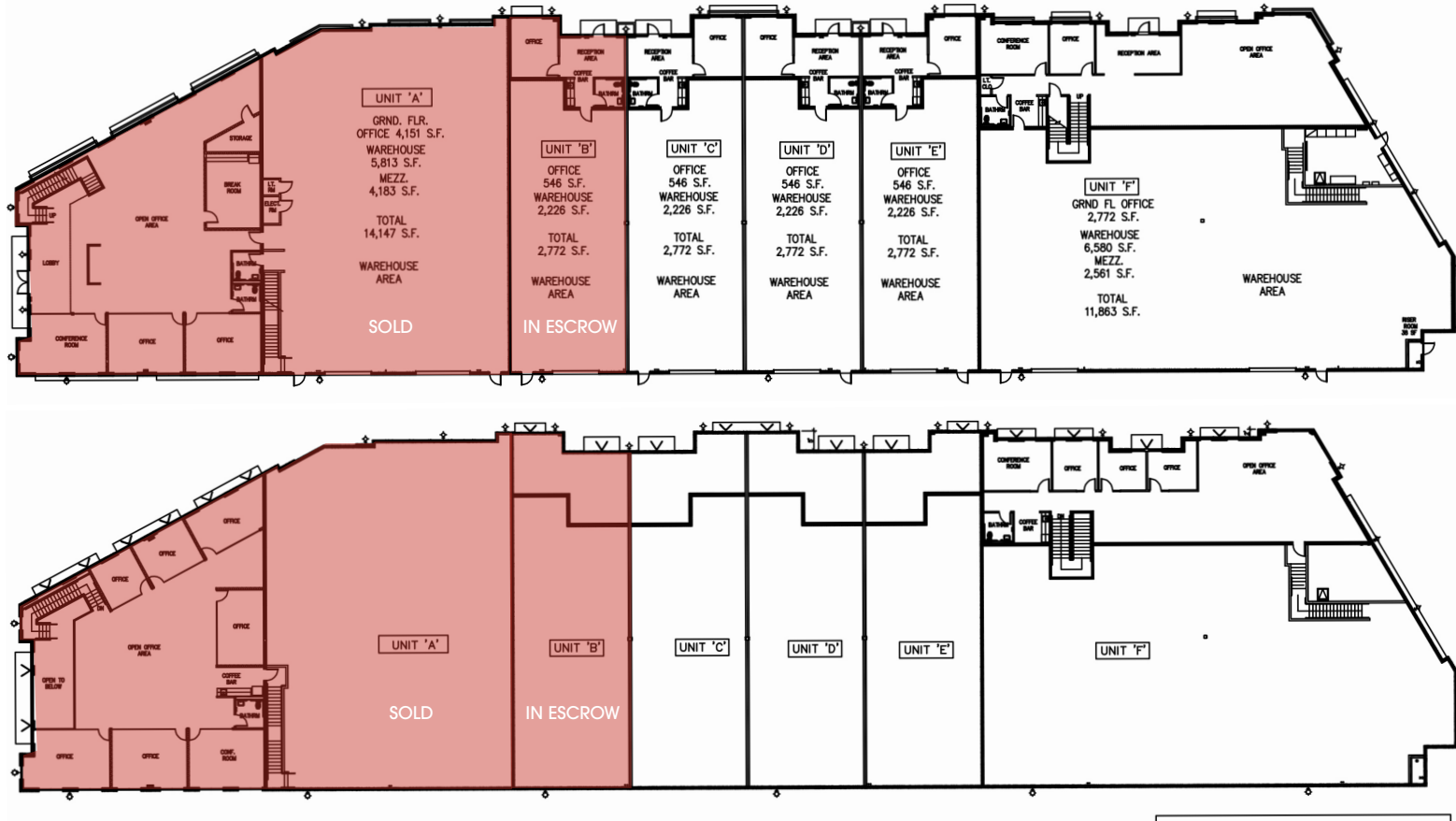
NAI Capital
COMMERCIAL REAL ESTATE SERVICES, WORLDWIDE

AVAILABILITY & PRICING

Unit	Total Size (SF)	Warehouse Size (SF)	Office Size (SF)	Office Mezz	Ground Level Doors	Parking Stalls	Clear Height (Feet)	Sale Price (PSF)	Sale Price
1	13,734	5,823	7,910	Yes	2	44	25'-26'	SOLD	SOLD
2	2,772	2,249	523	No	1	5	23'-24'	IN ESCROW	IN ESCROW
3	2,772	2,249	523	No	1	5	23'-24'	\$450.00	\$1,247,400.00
4	2,772	2,249	523	No	1	5	23'-24'	\$450.00	\$1,247,400.00
5	2,772	2,249	523	No	1	5	23'-24'	\$450.00	\$1,247,400.00
6	12,181	7,160	5,021	Yes	2	33	25'-26'	\$450.00	\$5,481,450.00



SITE PLAN



\$ \$450/SF
Sale Price



37,514 SF
Total Building Size



23'-26'
Clearance

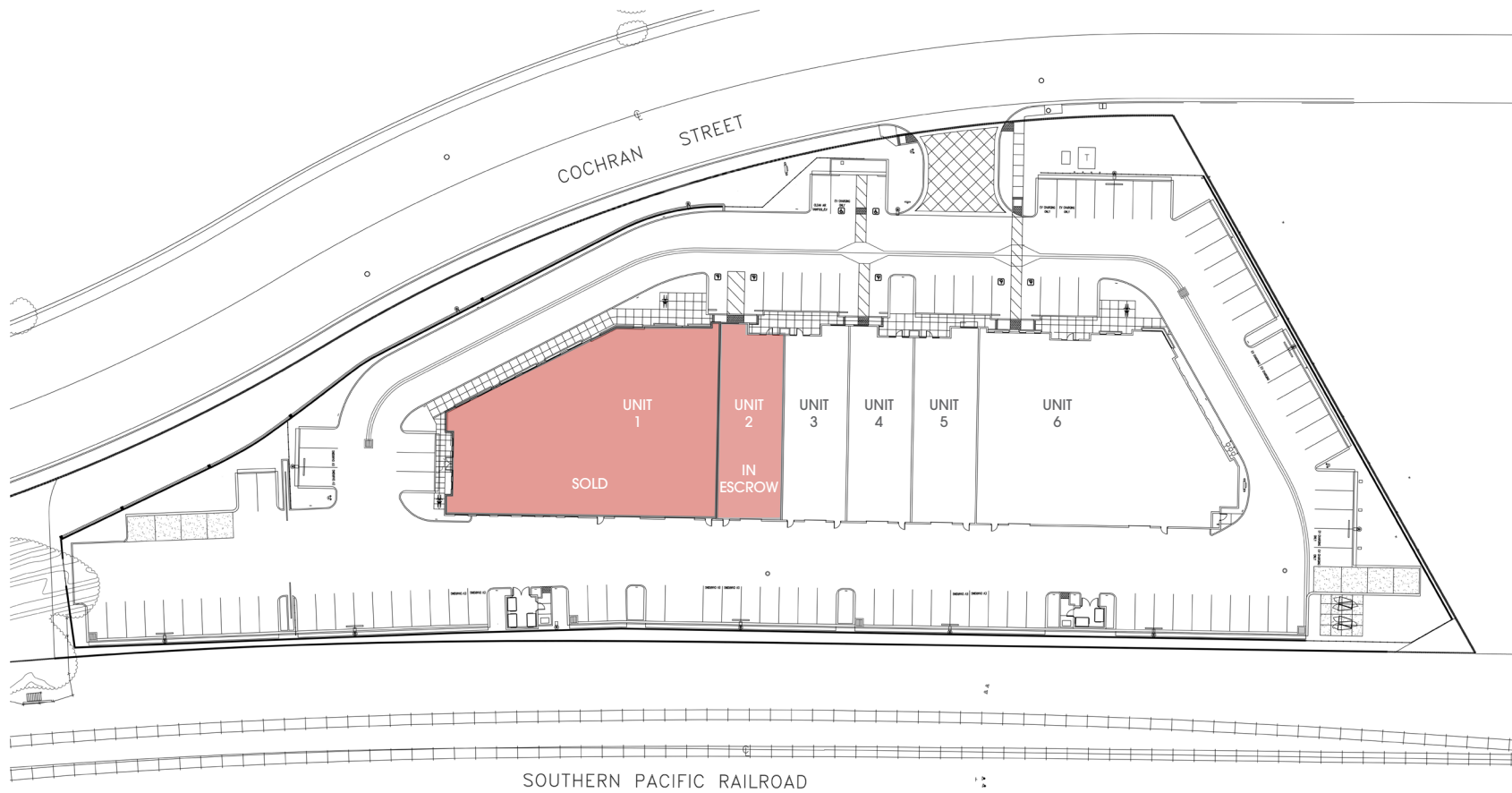


2,772 to 20,487
SF Available

Cochran Street Visibility Across from Home Depot

MOUNTAIN VIEW BUSINESS CENTER | 600-620 E. COCHRAN STREET, SIMI VALLEY, CA 93065

SITE PLAN



2.69/1,000
SF Parking



5,000 SF
2-Story Office



On site
EV Charging



Available
3Q 2024

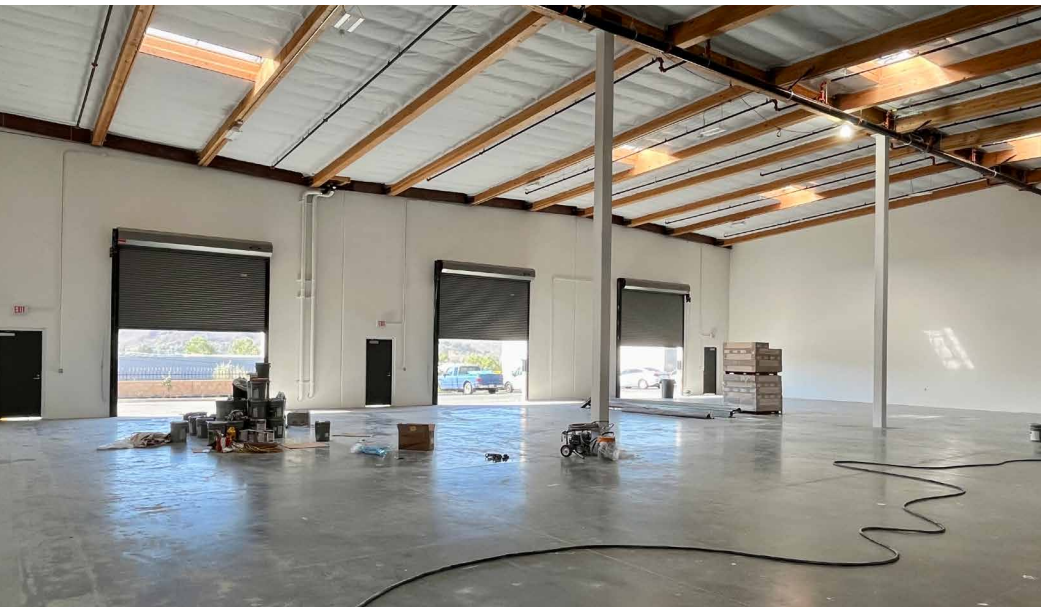
Rare Small Industrial Units For Sale

MOUNTAIN VIEW BUSINESS CENTER | 600-620 E. COCHRAN STREET, SIMI VALLEY, CA 93065

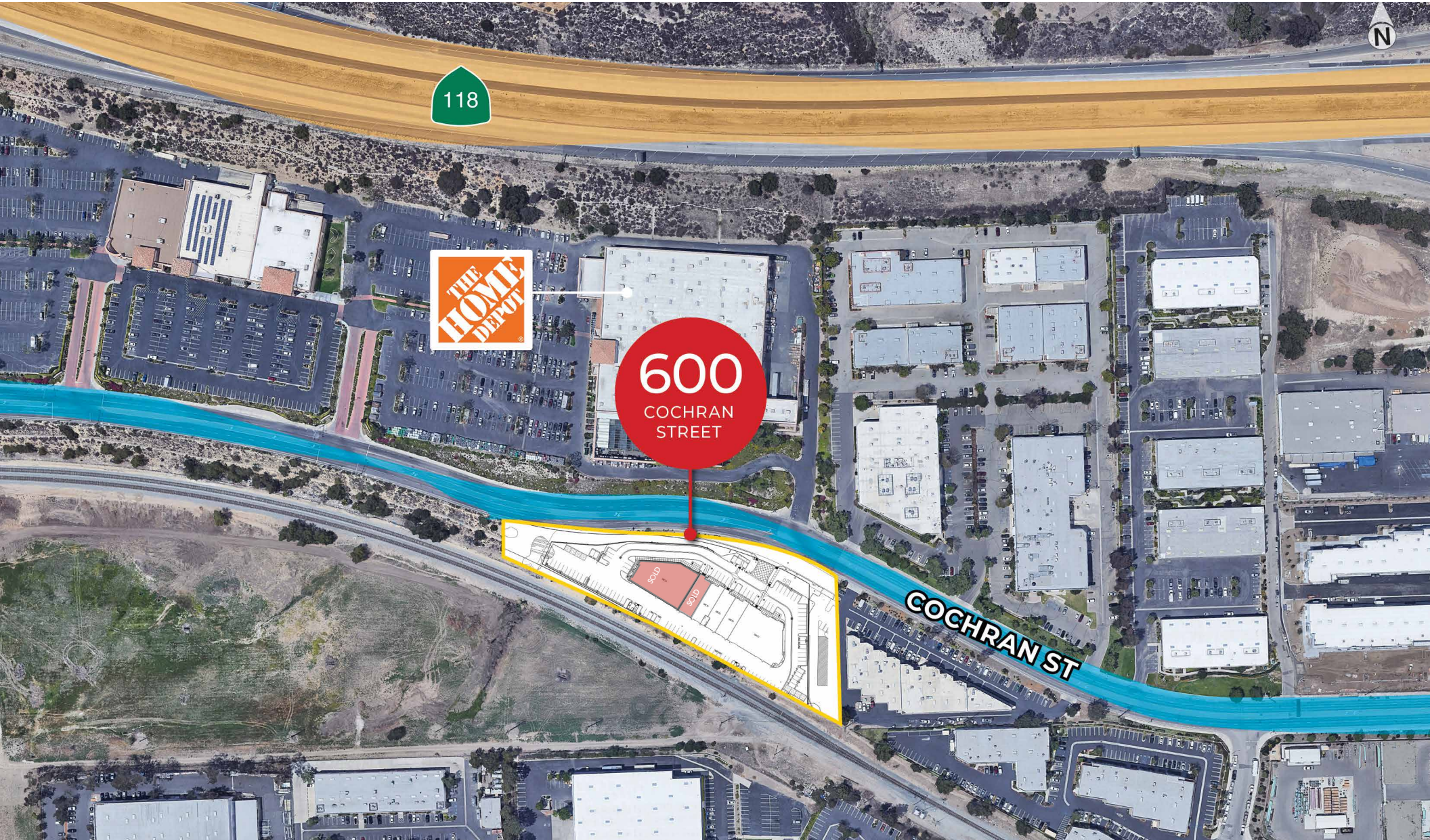




PROPERTY PHOTOS



LOCATION MAP



Mountain View Business Center | Simi Valley, CA



600 E. Cochran Street
2,772 SF - 20,497 SF



Exclusively Offered by:

Gary Seaton

Executive Vice President
805.277.4021 direct
gseaton@naicapital.com
Cal DRE Lic #00713834

Scott Linklater

Vice President
805.277.4024 direct
slinklater@naicapital.com
Cal DRE Lic #01431467



No warranty, express or implied, is made as to the accuracy of the information contained herein. This information is submitted subject to errors, omissions, change of price, rental or other conditions, withdrawal without notice, and is subject to any special listing conditions imposed by our principals. Cooperating brokers, buyers, tenants and other parties who receive this document should not rely on it, but should use it as a starting point of analysis, and should independently confirm the accuracy of the information contained herein through a due diligence review of the books, records, files and documents that constitute reliable sources of the information described herein. NAI Capital CA DRE #02130474