

Retail

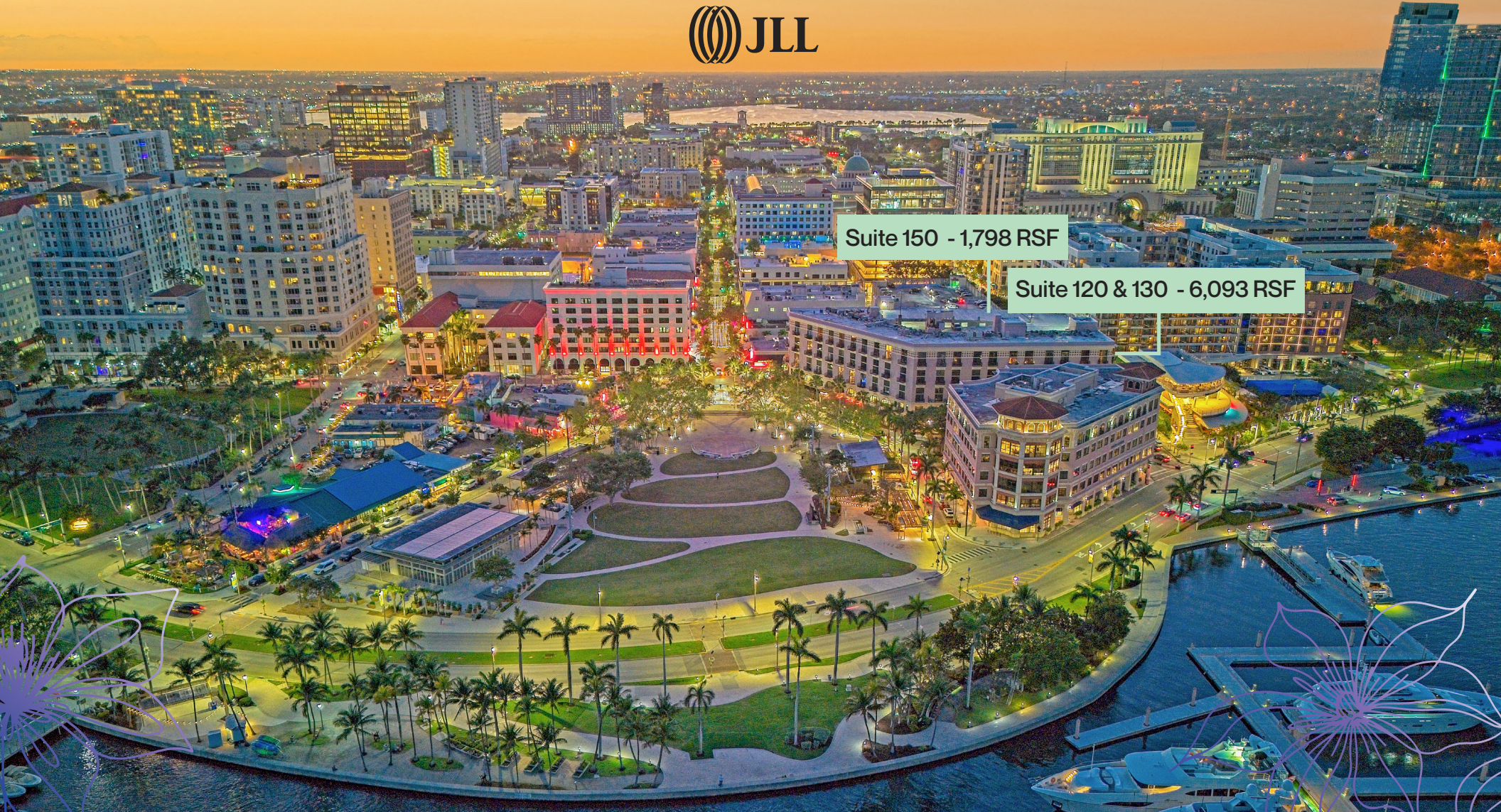
For Lease on Clematis St.

 101 N. Clematis Street, West Palm Beach, FL 33401



Suite 150 - 1,798 RSF

Suite 120 & 130 - 6,093 RSF



Property Details

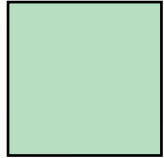
Located in the heart of the Clematis District

- 1,798 RSF former yacht showroom (Suite 150)
- 6,093 RSF total
 - Can be demised into two spaces:
 - 2,593 RSF (Suite 120)
 - 3,500 RSF (Suite 130)
- Underneath 101 Lofts residential building with 60 units and next to 1N Clematis office building with 90,710 SF total
- On-site valet parking
- Prime location at the tip of the highly-celebrated Clematis Street restaurant row with views of the Intracoastal Waterway and Palm Beach Island
- Close proximity to the Brightline Station, Rosemary Square, West Palm Beach Amphitheater, Palm Beach Island and multiple beaches
- Restaurants on Clematis include Pistache, Bodega, 123 Datura, Oku Sushi (coming soon), Bristol's Burgers (coming soon), Starbucks, Batch, Spazio, Lynora's, Elisabetta's Ristorante, Pubbelly, Waxins (coming soon), Rocco's Tacos and more



Floor Plan

101 N Clematis St // Banyan Blvd, Suite 150



Available

Suite 150 Specifics

- 1,798 RSF total
- Open Floor Plan
- Former Yacht Showroom

On



Banyan Blvd

&



Narcissus Ave

Sof

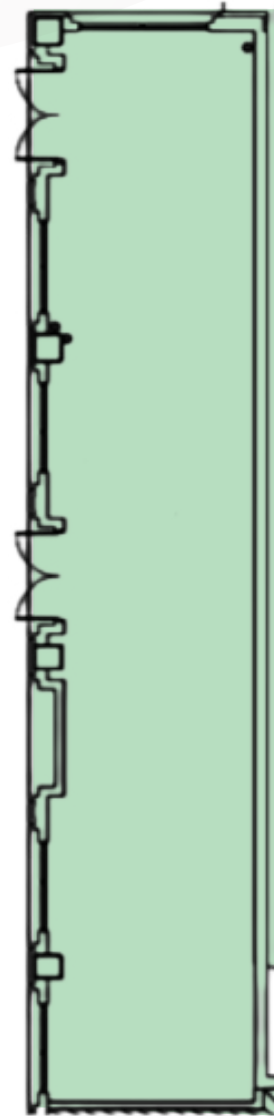


Lantana Ave

Nof

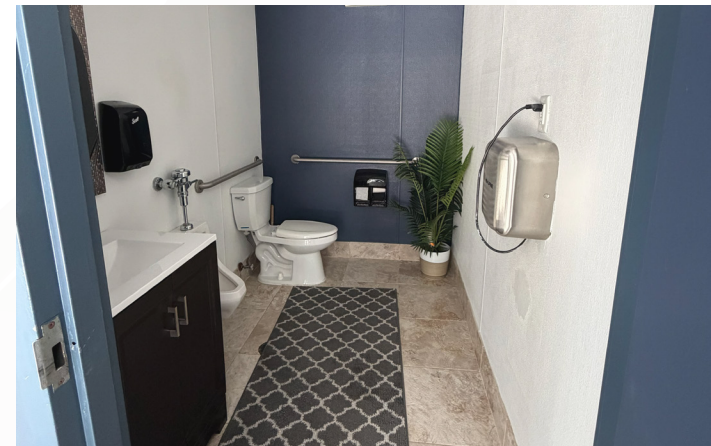


Clematis St



Narcissus Ave

Banyan Blvd



Floor Plan

101 N Clematis St // Banyan Blvd, Suite 120 & 130

Suite 120 & 130 Specifics

- 6,093 RSF total
- Turnkey Delivery
- Can be demised into two spaces:
 - 2,593 RSF (Suite 120)
 - 3,093 RSF (Suite 130)

On



Banyan Blvd

&



Lantana Ave

Sof



Narcissus Ave

Nof



Clematis St





Clematis
Street

The Historical Entertainment District of Downtown West Palm Beach

A cultural & social epicenter: Clematis Street is more than just a commercial district; it's the West Palm Beach epicenter. It serves as a central artery of WPB, bustling with shops, restaurants and cultural venues. The street's vibrant atmosphere is magnetic, offering an eclectic mix of art, history and dining experiences, from casual eateries to upscale restaurants.

Three-mile demographics

86,294 Population
count

34,893 Household
count

\$143,028 Avg. household
income

122,814 Daytime
population





For more information, please contact:

Retail contacts

Jonathan Rosen Daniel Gardner Michael Barashick

jonathan.rosen@jll.com daniel.gardner@jll.com michael.barashick@jll.com

954 729 1074

904 534 8785

561 444 6489

Office contacts

Kevin Probel Kevin McCarthy

kevin.probel@jll.com kevin.mccarthy@jll.com

561 676 2131

561 292 2668

Suite 150 - 1,798 RSF

Suite 120 & 130 - 6,093 RSF

Although information has been obtained from sources deemed reliable, JLL does not make any guarantees, warranties or representations, express or implied, as to the completeness or accuracy as to the information contained herein. Any projections, opinions, assumptions or estimates used are for example only. There may be differences between projected and actual results, and those differences may be material. JLL does not accept any liability for any loss or damage suffered by any party resulting from reliance on this information. If the recipient of this information has signed a confidentiality agreement with JLL regarding this matter, this information is subject to the terms of that agreement. ©2026. Jones Lang LaSalle Brokerage, Inc. All rights reserved.