



59 JOHN STREET

In the Heart of Manhattan's Financial District

RETAIL FOR LEASE



59 JOHN STREET

In the Heart of Manhattan's Financial District

HIGHLIGHTS

- CORNER RETAIL ON JOHN & WILLIAM STREETS
- REASONABLE DIVISION CONSIDERED
- 195+ OF WRAP-AROUND FRONTAGE
- ALL USES CONSIDERED

ASKING \$95/PSF

GROUND:	6,210 SF
BASEMENT:	1,500 SF
TOTAL:	7,710 SF

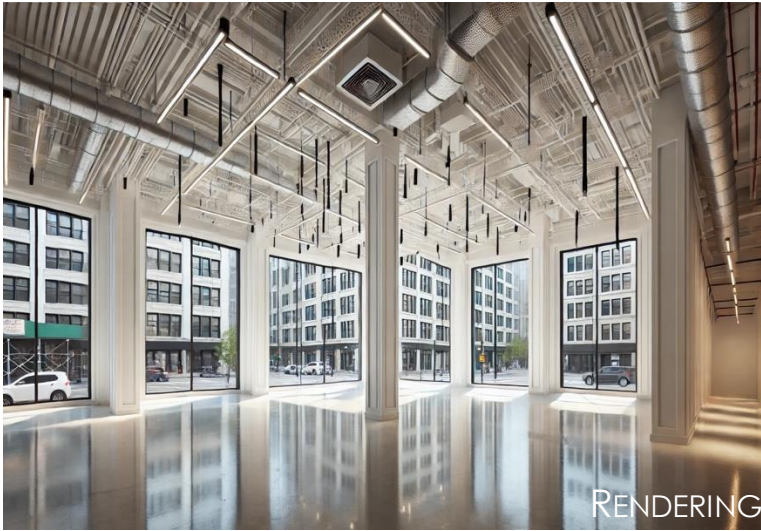
LEVIATHAN LEASING

DIRECT: 212-931-9463

ELIE COHEN
ELIE@LEVIATHANCRE.COM

YARON COHEN
YARON@LEVIATHANCRE.COM

TRANSPORTATION:



RENDERING



RENDERING

59 John Street

FLOOR-PLAN

