

3060 100th Street

Urbandale, Iowa 50322
www.cbre.com/desmoines

Flex or Retail space available for sublease on 100th Street, a primary north/south corridor in the western suburbs. This building offers excellent visibility to 100th Street and quick access to Hickman Road and Douglas Avenue. Surrounded by dozens of industrial/flex properties, the 100th Street corridor is a primary retail corridor in Urbandale and home to many restaurants, retail shops, and professional service occupiers.

Available Space

+ 3,060 SF

Lease Rate

+ \$10.50 PSF NNN

+ OPEX: \$7.36

Space Features

+ Two offices

+ Showroom

+ Drive-in door

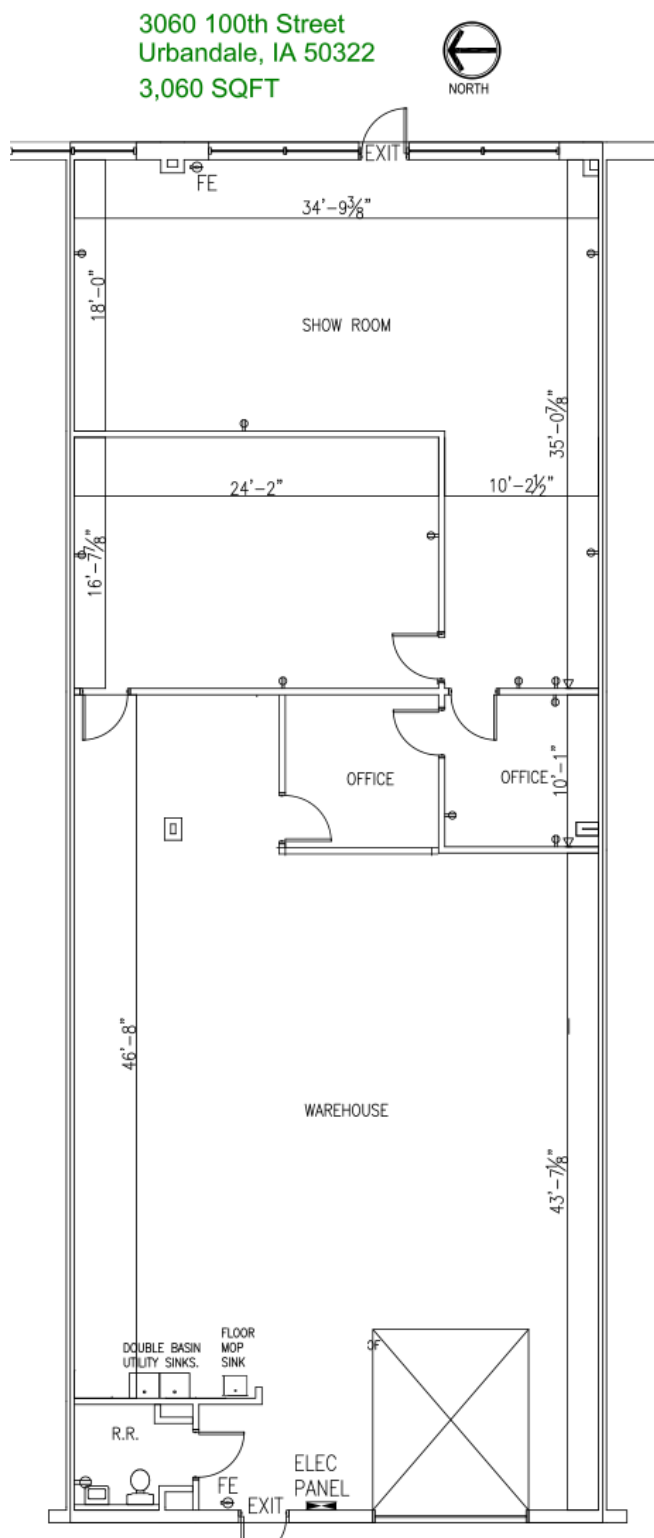
+ Zoning: M-2 Business Park Industrial District



3060 100th Street
Urbandale, Iowa

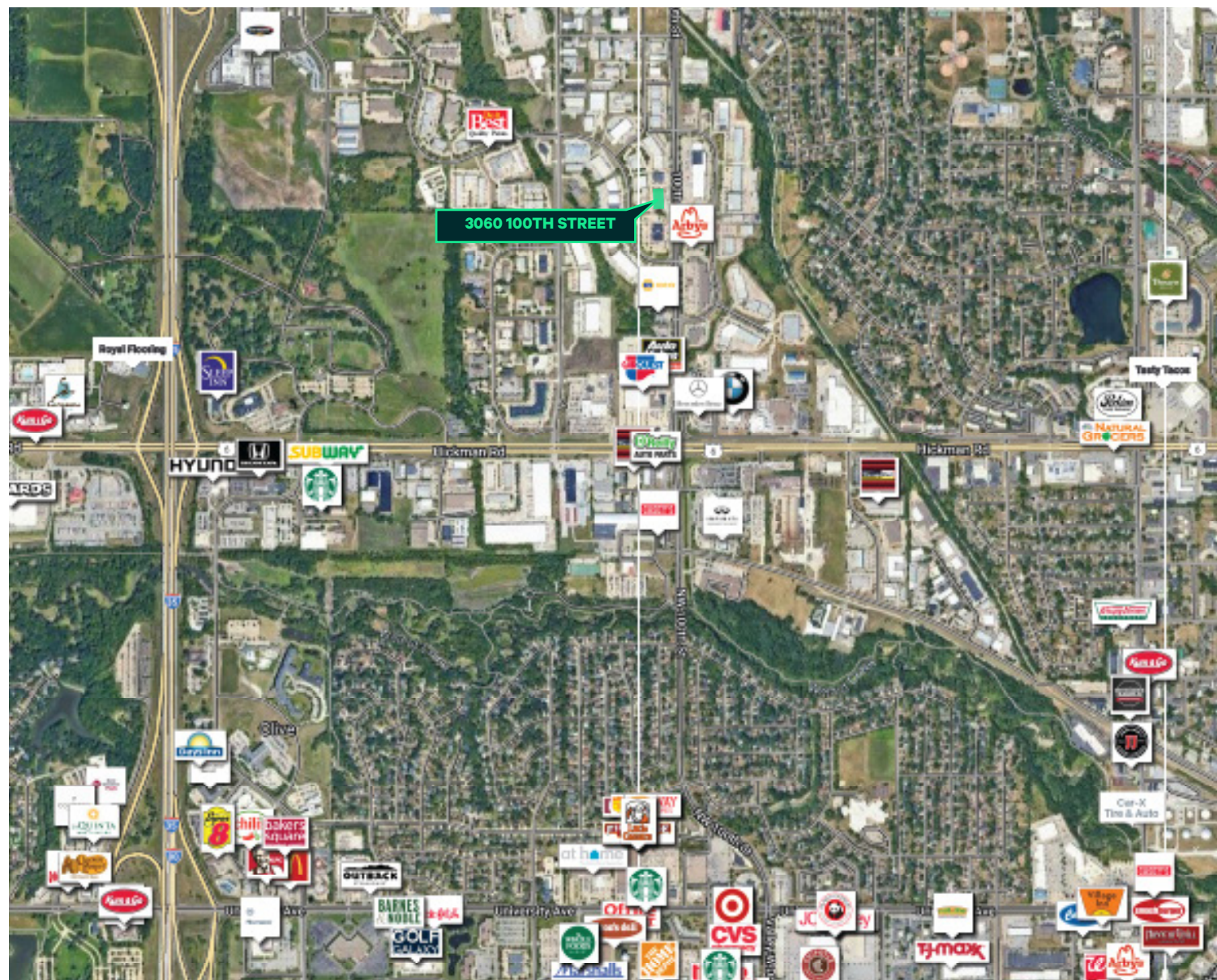
For Sublease

3,060 SF



CBRE

Location



Contact Us

Michael A. Smith

Vice President
+1 515 975 1112
mike.smith8@cbre.com
Licensed in the State of Iowa.

Bill Wright

Senior Vice President
+1 515 210 3050
bill.wright2@cbre.com
Licensed in the State of Iowa.

© 2026 CBRE, Inc. All rights reserved. This information has been obtained from sources believed reliable, but has not been verified for accuracy or completeness. You should conduct a careful, independent investigation of the property and verify all information. Any reliance on this information is solely at your own risk. CBRE and the CBRE logo are service marks of CBRE, Inc. All other marks displayed on this document are the property of their respective owners, and the use of such logos does not imply any affiliation with or endorsement of CBRE. Photos herein are the property of their respective owners. Use of these images without the express written consent of the owner is prohibited.