



LAND DEVELOPMENT OPPORTUNITY

BIRMINGHAM (TRUSSVILLE), ALABAMA

SALE

6042 Service Road
Trussville, AL 35235

SITE

(+/-) 16 Acres, rough graded

ZONING

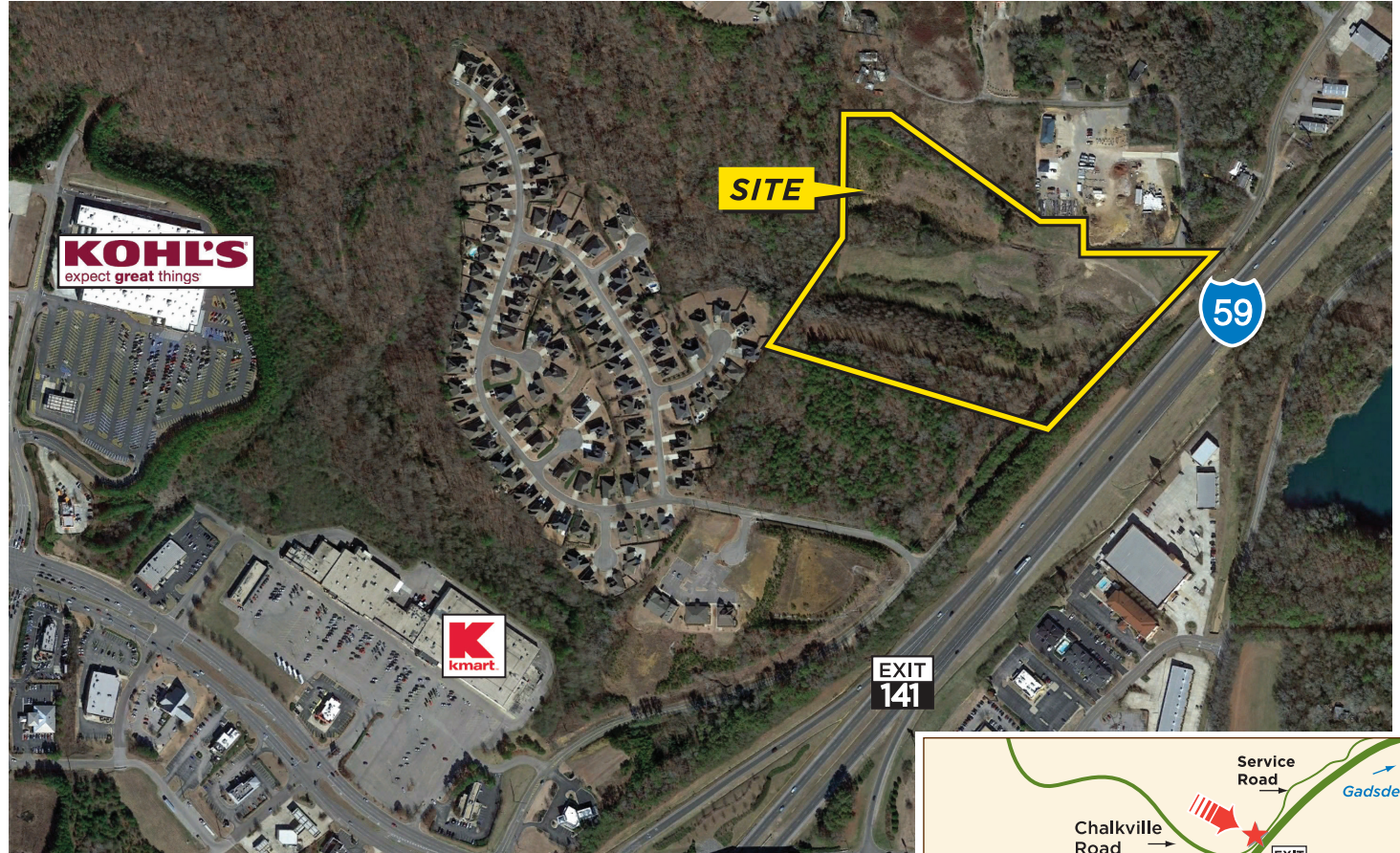
C-1; Commercial District
Unincorporated Jefferson
County zoning allows for banks,
hotels, office, restaurants and
retail

ACCESS

Less than 2 miles from Exit 141,
I-59, with excellent visibility from
the interstate

UTILITIES

All, including sewer



SALE PRICE

\$695,000.00

Information deemed reliable, but not guaranteed.



Graham & Co

1801 Fifth Avenue North
Suite 300
Birmingham, AL 35203

TEL 205.871.7100
FAX 205.871.3331
grahamcompany.com

10/17/17 JC