

# 3576 SH-6 SOUTH

FORMER GOLDEN CORRAL

Houston, Texas



For Sublease / 14,155 RSF

WE ARE  
THE CENTER  
OF RETAIL

**REDUCED RENT**



# 3576 SH-6 SOUTH

HOUSTON, TX 77082

## RETAIL SPACE

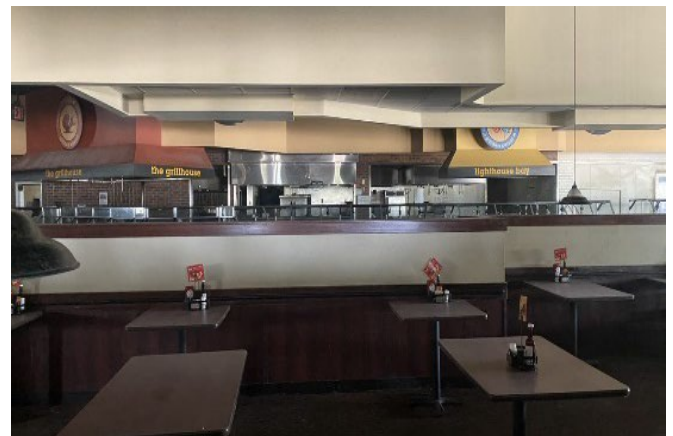
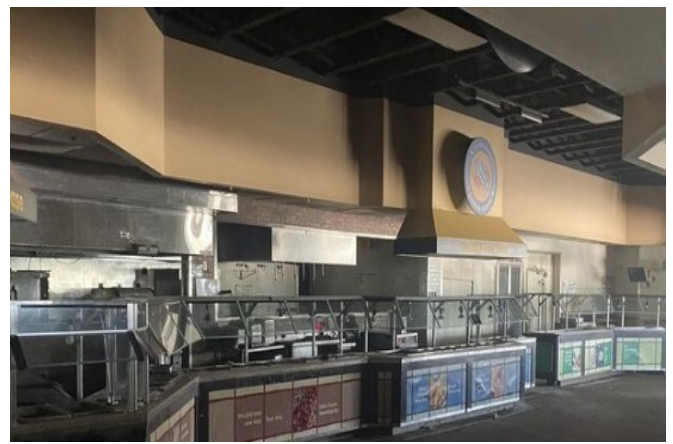
14,155 SF

## LEASE RATE

Contact Broker

## LOT SIZE

2.83 acres



## NEIGHBORING TENANTS

- Whataburger
- Take 5 Oil
- Wienerschnitzel
- Aldi
- H-E-B
- McDonald's
- Life Storage
- Palace Inn
- Walmart
- Home Depot
- Red Lobster
- Olive Garden
- Regal
- Dillard's Clearance
- Ross
- Dunkin' Donuts
- Shell Technology Center

## COMMENTS

- Second generation former Golden Corral with 185 surface parking spaces
- Busy intersection on Highway 6 and Schiller Road

## NEIGHBORHOOD DEMOGRAPHICS



POPULATION



MEDIAN HOUSEHOLD INCOME



DAYTIME POPULATION

1 Mile

19,035

\$48,397

4,691

3 Miles

151,872

\$55,129

36,707

5 Miles

366,416

\$60,496

110,330

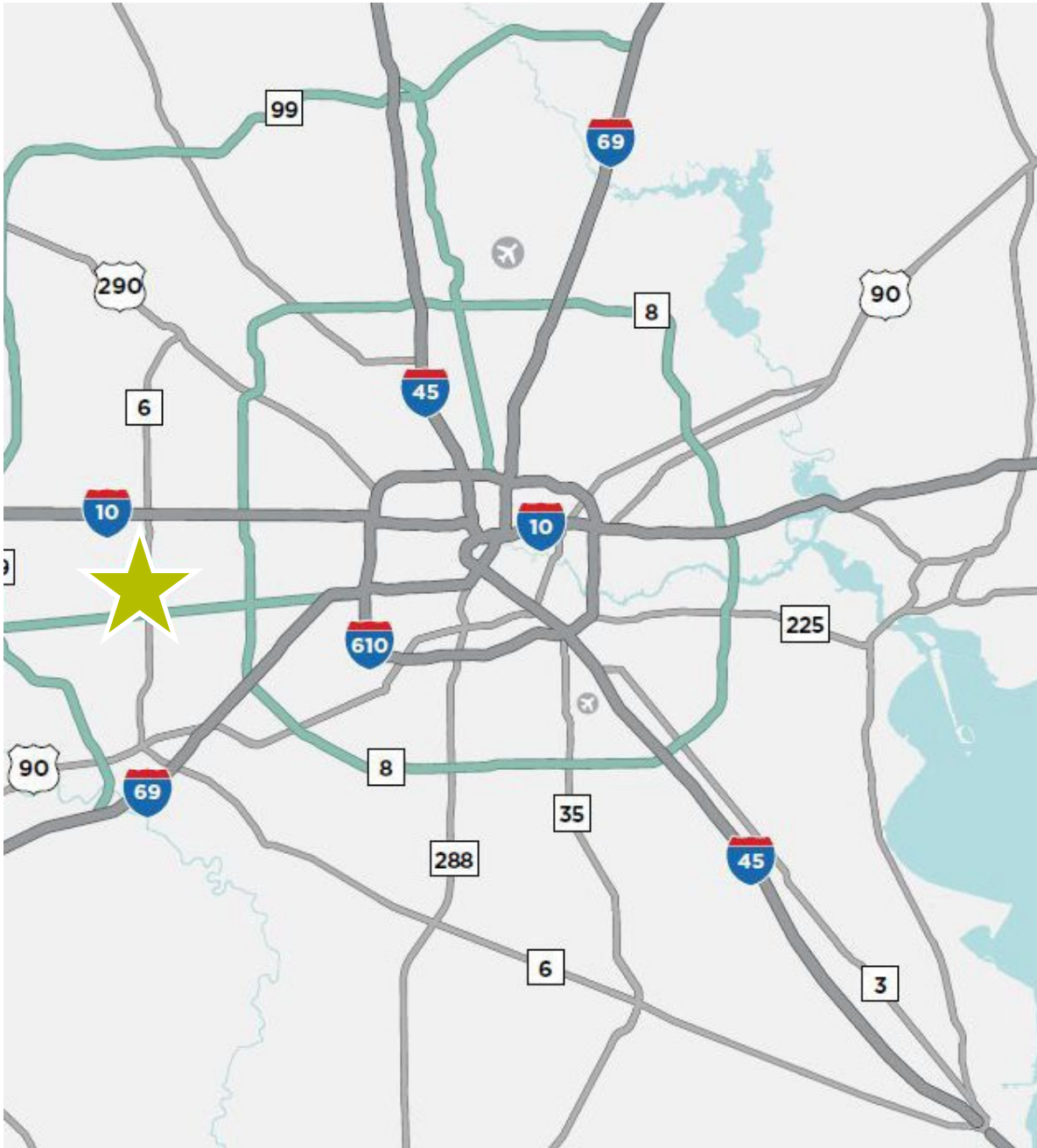
**Michael Burgower** / Associate / michael.burgower@cushwake.com / +1 713 331 1747  
**Rachel Hale Granstrom** / Associate / rachel.granstrom@cushwake.com / +1 713 260 0237

**WE ARE  
THE CENTER  
OF RETAIL**

©2023 Cushman & Wakefield. All rights reserved. The information contained in this communication is strictly confidential. This information has been obtained from sources believed to be reliable but has not been verified. NO WARRANTY OR REPRESENTATION, EXPRESS OR IMPLIED, IS MADE AS TO THE CONDITION OF THE PROPERTY (OR PROPERTIES) REFERENCED HEREIN OR AS TO THE ACCURACY OR COMPLETENESS OF THE INFORMATION CONTAINED HEREIN, AND SAME IS SUBMITTED SUBJECT TO ERRORS, OMISSIONS, CHANGE OF PRICE, RENTAL OR OTHER CONDITIONS, WITHDRAWAL WITHOUT NOTICE, AND TO ANY SPECIAL LISTING CONDITIONS IMPOSED BY THE PROPERTY OWNER(S). ANY PROJECTIONS, OPINIONS OR ESTIMATES ARE SUBJECT TO UNCERTAINTY AND DO NOT SIGNIFY CURRENT OR FUTURE PROPERTY PERFORMANCE.

# 3576 SH-6 SOUTH

HOUSTON, TX 77082



## FOCUS MAP

Michael Burgower / Associate / [michael.burgower@cushwake.com](mailto:michael.burgower@cushwake.com) / +1 713 331 1747

Rachel Hale Granstrom / Associate / [rachel.granstrom@cushwake.com](mailto:rachel.granstrom@cushwake.com) / +1 713 260 0237

WE ARE  
THE CENTER  
OF RETAIL

# 3576 SH-6 SOUTH

HOUSTON, TX 77082



**AERIAL**

Michael Burgower / Associate / michael.burgower@cushwake.com / +1 713 331 1747  
Rachel Hale Granstrom / Associate / rachel.granstrom@cushwake.com / +1 713 260 0237

**WE ARE  
THE CENTER  
OF RETAIL**