

PROJECT CODE INFORMATION

EXISTING BUILDING SHELL
 CODE IN USE FOR THIS PROJECT
 2012 INTERNATIONAL BUILDING CODE
 2012 INTERNATIONAL MECHANICAL CODE
 2012 INTERNATIONAL PLUMBING CODE
 2011 NATIONAL ELECTRIC CODE
 2012 INTERNATIONAL FIRE CODE
 ANCI

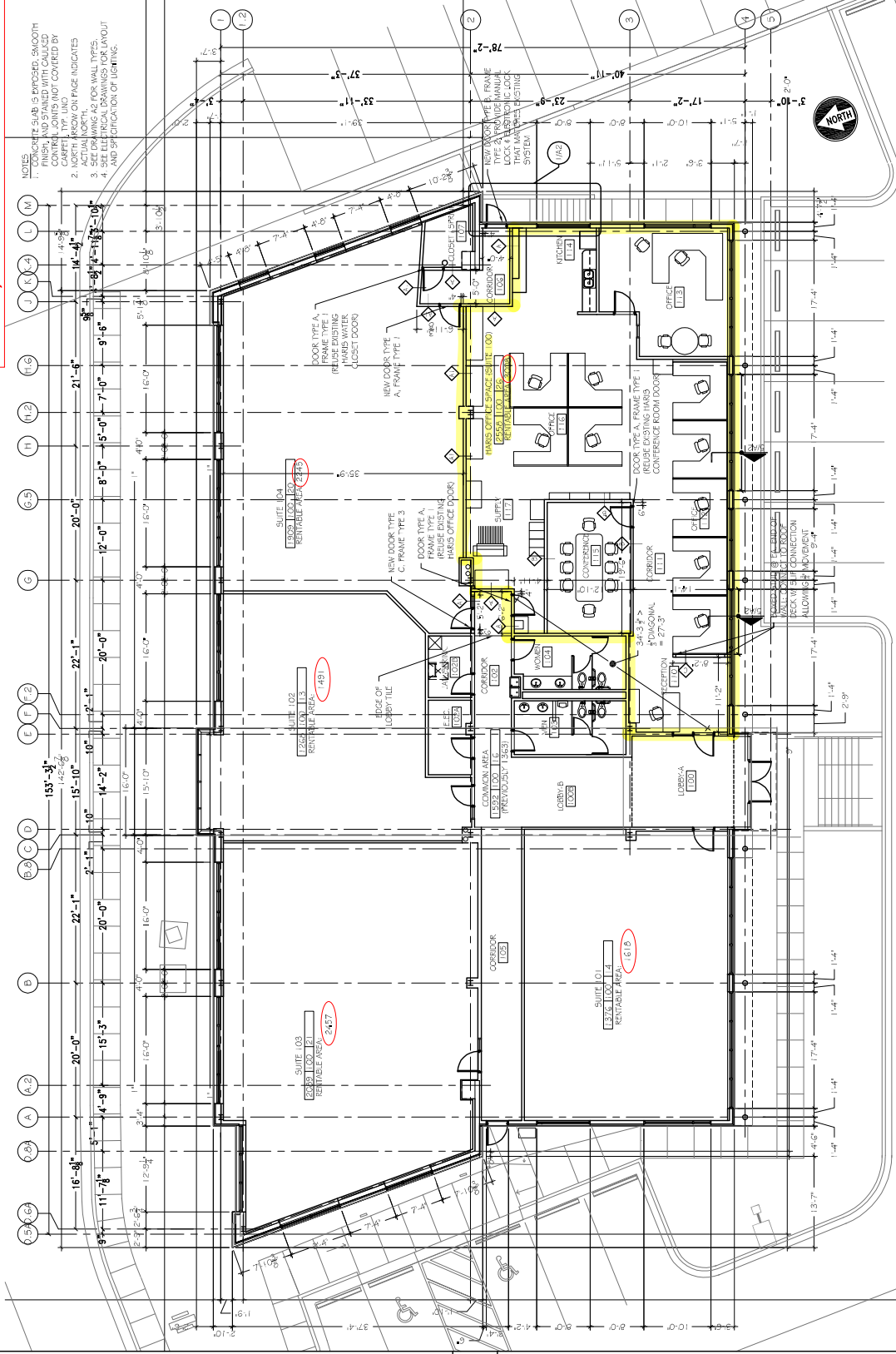
USE GROUP
 TYPE OF CONSTRUCTION: "VB"
 BUILDING HAS SPRINKLER SYSTEM: YES
 BUILDING HAS FIRE & ALARM SYSTEM: YES

FIRE RATING:
 WALLS(EXTERIOR)
 ROOF
 FLOOR
 TYPICAL FRAMING
 OCCUPANCY LOAD FOR EGRESS :
 REQUIRED NO. OF EXITS:
 EXIT PROVIDED:

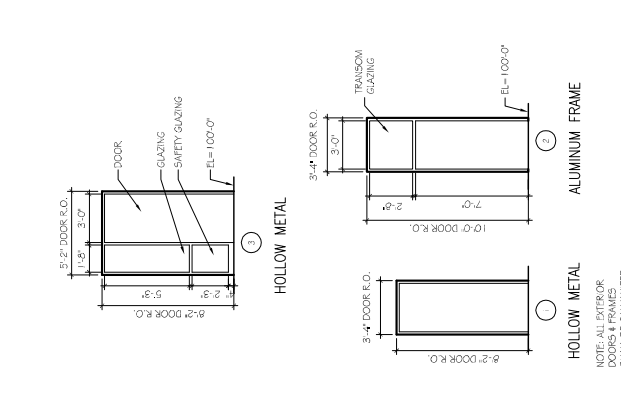
EXISTING
 EXISTING
 EXISTING
 EXISTING (NOT COMBUSTIBLE)
 2558/100=26 PEOPLE
 1 LESS THAN 50 OCCUPANTS.
 2
 TRAVEL DISTANCE LESS THAN 100'

'B' NEW TENANT
 TYPE OF CONSTRUCTION: "VB"
 BUILDING HAS SPRINKLER SYSTEM: YES
 BUILDING HAS FIRE & ALARM SYSTEM: YES

Correct square footage is circled in red (this is the footage that is used to calculate rental rate to charge tenant)



- NOTES
- CONCRETE SLAB IS EXPOSED, SMOOTH FINISH. ALL FINISHES ARE TO BE COVERED BY CARPET, TYP. LINO.
 - NORTH ARROW ON FACE INDICATES FINISH FLOOR LINE.
 - SET DRAWING AS FOR WALL TYPES.
 - SEE ELECTRICAL DRAWINGS FOR LAYOUT AND SPECIFICATION OF LIGHTING.



3 Frame Types
 SCALE: 1/8" = 1'-0"

2 Door Types
 SCALE: 1/8" = 1'-0"

DOOR & GLAZING NOTES:
 1. ALL EXTERIOR GLAZING SHALL BE VIRACON
 2. INTERIOR GLAZING SHALL BE CLEAR, TEMPERED GLASS.
 3. ALL ALUMINUM MILLWORKS AND FRAMES TO BE ANODIZED OR WITH CLEAR ANODIZED COATING.
 4. ALL HOLLOW METAL DOOR FRAMES TO BE SMOOTH FINISH OF WOOD GRAIN.
 5. DOOR HARDWARE TO MATCH EXISTING HARDWARE IN EXISTING DOORS.