

RETAIL PROPERTY

FOR LEASE

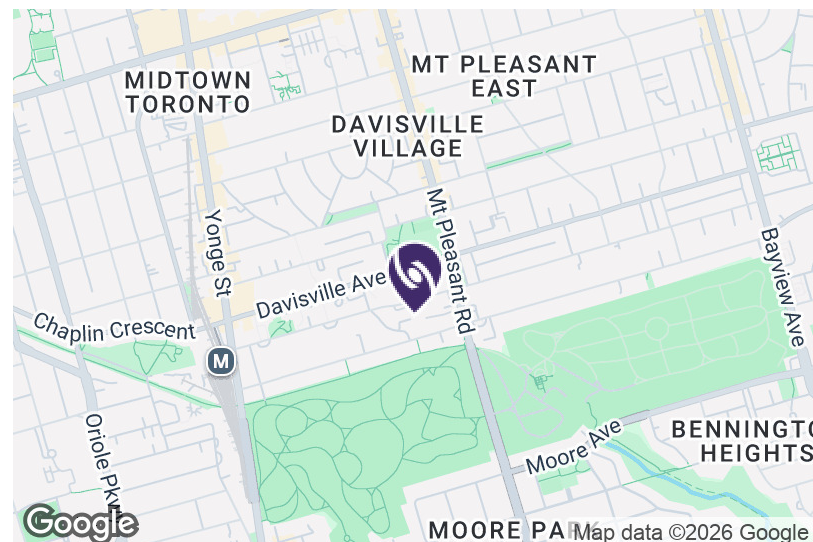


235 Balliol Street, Toronto, ON, M4S 1C7



Brand new retail unit comprising of 1,539 square feet located at the base of a new mixed-use development between Yonge Street and Mount Pleasant Road in Midtown Toronto.

- The space offers excellent street exposure with large windows and strong visibility to local vehicle and pedestrian traffic.
- Delivered in shell condition, the unit provides an open layout ready for tenant improvements and is well suited for a variety of retail, service, medical, or food-related uses.
- Surrounded by more than 7,000 residential units within walking distance, the property benefits from a built-in customer base and consistent local foot traffic.
- An exceptional opportunity to establish a retail presence in a rapidly growing residential neighbourhood.



ARYEH ROSENZWEIG

Sales Representative
O: +1(416)636.8898 EXT. 251
C: +1(416)521.5488
arosenzweig@thebehargroup.com

VANESSA TSE

Sales Representative, Capital Markets
O: +1(416)636.8898 EXT. 294
C: +1(416)220.1000
vanessat@thebehargroup.com



The Behar Group Realty Inc., Brokerage



PROPERTY DETAILS	
Size:	1,539 SF
Lease Rate:	Contact Listing Agents
Additional Rent:	TBD

DEMOGRAPHICS	500 M	1 KM	3 KM
Total Population	11,081	36,821	210,638
Daytime Population	11,113	32,496	213,980
Total Households	5,700	17,575	96,690
Average Household Income	\$133,697	\$169,307	\$280,507

Data Source: Environics Estimates 2025

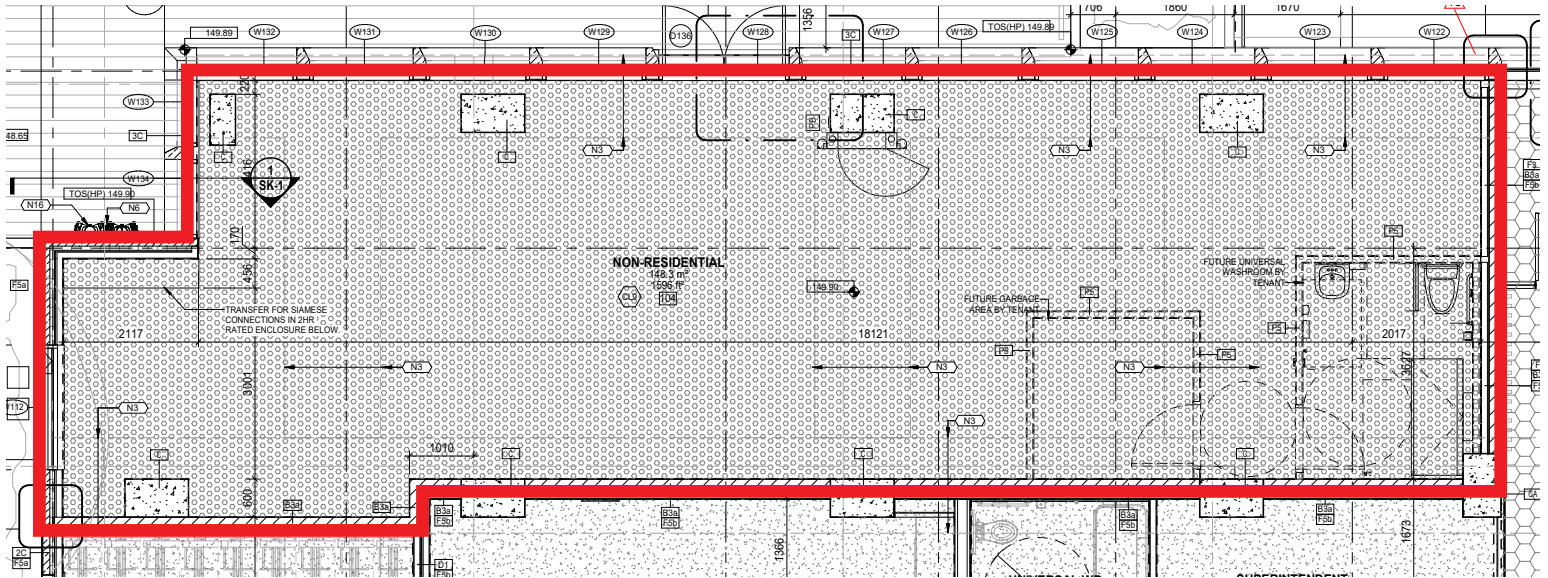
Map data ©2025 Google Imagery ©2025 Airbus, CNES / Airbus, First Base Solutions, Maxar Technologies

ARYEH ROSENZWEIG
 Sales Representative
 O: +1(416)636.8898 EXT. 251
 C: +1(416)521.5488
 arosenzweig@thebehargroup.com

VANESSA TSE
 Sales Representative, Capital Markets
 O: +1(416)636.8898 EXT. 294
 C: +1(416)220.1000
 vanessat@thebehargroup.com



FLOOR PLAN



ARYEH ROSENZWEIG

Sales Representative
O: +1(416)636.8898 EXT. 251
C: +1(416)521.5488
arosenzweig@thebehargroup.com

VANESSA TSE

Sales Representative, Capital Markets
O: +1(416)636.8898 EXT. 294
C: +1(416)220.1000
vanessat@thebehargroup.com





ARYEH ROSENZWEIG
Sales Representative
O: +1(416)636.8898 EXT. 251
C: +1(416)521.5488
arosenzweig@thebehargroup.com

VANESSA TSE
Sales Representative, Capital Markets
O: +1(416)636.8898 EXT. 294
C: +1(416)220.1000
vanessat@thebehargroup.com



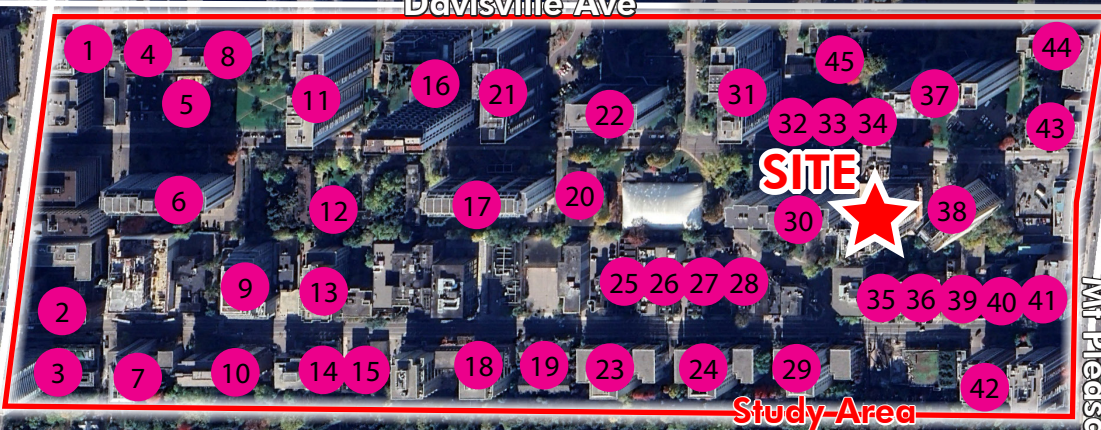
Existing Residential Density MAP

+/- 7,217 Units *Within Study Area*

Source: CoStar

ADDRESS UNITS

1	1901 Yonge St	66	24	225 Merton St	124
2	1819 Yonge St	65	25	180 Merton St	24
3	1815 Yonge St	241	26	194 Merton St	51
4	25 Davisville Ave	14	27	210 Merton St	7
5	44 Balliol St	30	28	212 Merton St	7
6	45 Balliol St	276	29	253 Merton St	245
7	35 Merton St	224	30	221 Balliol St	242
8	33 Davisville Ave	266	31	200 Balliol St	370
9	68 Merton St	149	32	228-316 Balliol St	5
10	71 Merton St	167	33	124-126 Balliol St	6
11	77 Davisville Ave	483	34	230-240 Balliol St	5
12	57-93 Balliol St	19	35	260 Merton St	100
13	100 Merton St	132	36	268 Merton St	38
14	111 Merton St	56	37	225 Davisville Ave	407
15	113 Merton St	9	38	265 Balliol St	202
16	118 Balliol St	521	39	292 Merton St	6
17	155 Balliol St	267	40	294 Merton St	6
18	119-139 Merton St	376	41	384 Mt Pleasant Rd	155
19	151 Merton St	35	42	319 Merton St	480
20	165 Balliol St	44	43	300 Balliol St	206
21	111 Davisville Ave	371	44	245 Davisville Ave	148
22	141 Davisville Ave	313	45	199-221 Davisville Ave	12
23	195 Merton St	247			



Mt Pleasant Rd



400 m

Disclaimer: Although the information contained herein is from sources believed to be reliable, no warranty or representation is made as to its accuracy and is subject to errors, omissions, conditions, withdrawn or other changes without notice and same should not be relied upon without independent verification. The Behar Group Realty Inc., Brokerage does not accept or assume any responsibility or liability, direct or consequential, for the information or the recipient's reliance upon the information.

ARYEH ROSENZWEIG

Sales Representative
O: +1(416)636.8898 EXT. 251
C: +1(416)521.5488
arosenzweig@thebehargroup.com

VANESSA TSE

Sales Representative, Capital Markets
O: +1(416)636.8898 EXT. 294
C: +1(416)220.1000
vanessat@thebehargroup.com



THE BEHAR GROUP™
LANDLORD SERVICES

Proposed Development MAP

+/- 6,406 Units *Under Development**

**Within Study Area*

Source: UrbanToronto

	PROJECT	STATUS	UNITS
1	22 Balliol Residences	Proposed	414
2	30 Merton Street	Under Construction	322
3	45 Balliol	Proposed	477
4	50 Merton	Proposed	603
5	60 Balliol at 33 Davisville	Proposed	526
6	55 Davisville Avenue	Proposed	400
7	155 Balliol Infill	Proposed	442
8	140 Merton Street	Proposed	294
9	141 Davisville	Proposed	432
10	185 Balliol	Proposed	442
11	170-180 Merton St	Proposed	531
12	214 Merton Street	Proposed	434
13	267-275 Merton Street	Under Construction	494
14	276-290 Merton	Proposed	91
15	235 Balliol	Under Construction	233
16	289 Balliol	Proposed	271



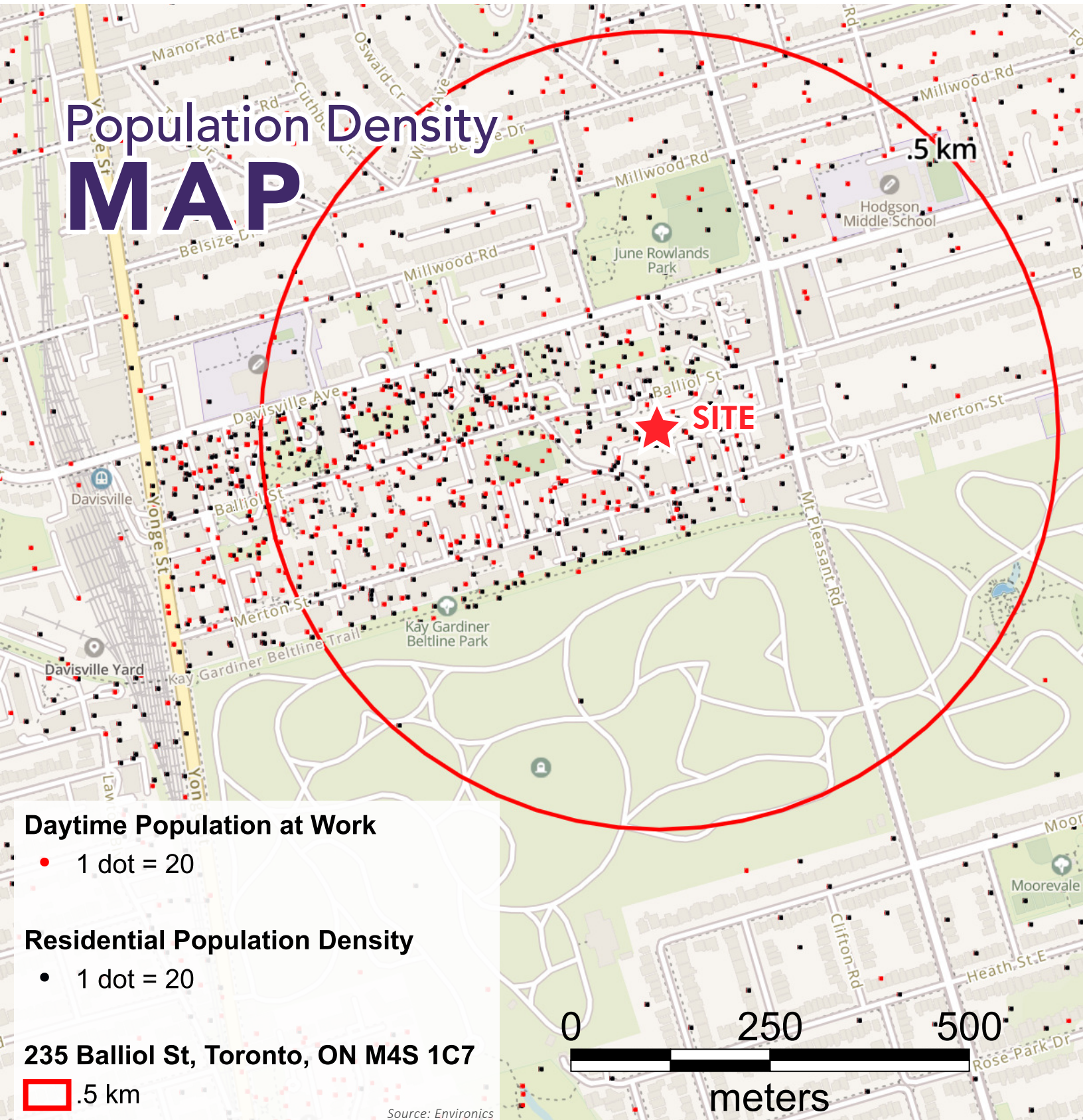
Disclaimer: Although the information contained herein is from sources believed to be reliable, no warranty or representation is made as to its accuracy and is subject to errors, omissions, conditions, withdrawn or other changes without notice and same should not be relied upon without independent verification. The Behar Group Realty Inc., Brokerage does not accept or assume any responsibility or liability, direct or consequential, for the information or the recipient's reliance upon the information.

ARYEH ROSENZWEIG
Sales Representative
O: +1(416)636.8898 EXT. 251
C: +1(416)521.5488
arosenzweig@thebehargroup.com

VANESSA TSE
Sales Representative, Capital Markets
O: +1(416)636.8898 EXT. 294
C: +1(416)220.1000
vanessat@thebehargroup.com



Population Density MAP



Daytime Population at Work

• 1 dot = 20

Residential Population Density

• 1 dot = 20

235 Balliol St, Toronto, ON M4S 1C7

0.5 km

Source: EnviroNics

ARYEH ROSENZWEIG

Sales Representative
O: +1(416)636.8898 EXT. 251
C: +1(416)521.5488
arosenzweig@thebehargroup.com

VANESSA TSE

Sales Representative, Capital Markets
O: +1(416)636.8898 EXT. 294
C: +1(416)220.1000
vanessat@thebehargroup.com





THE BEHAR GROUP™

BROKERAGE & COMMERCIAL REAL ESTATE SERVICES

LANDLORD
SERVICES

TENANT
SERVICES

CAPITAL
MARKETS

ADVISORY
SERVICES

Head Office (Mailing Address)

1170 Sheppard Avenue West, Suite 24,
Toronto, ON, M3K 2A3
Tel: 416.636.8898 | Fax: 416.636.8890

Downtown Office

30 Duncan Street, Suite 201
Toronto, ON, M5V 2A3

Vancouver Office

1110 Hamilton St, Unit 206
Vancouver, BC V6B 6C5
Tel: 604.616.0013

Calgary Office

639 5th Ave SW, Suite 2500
Calgary, AB T2P 0M9

The Behar Group Realty Inc., Brokerage
www.TheBeharGroup.com

DISCLAIMER & DISCLOSURE - IMPORTANT INFORMATION - PLEASE READ

Brokerage Duties and Representation Disclosure: The Real Estate Council of Ontario (RECO) regulates real estate professionals in Ontario. RECO's mandate is to protect the public interest by promoting a safe and informed marketplace and administering the rules that real estate agents and brokerages must follow.

As of December 1, 2023, new legislation has come into effect (TRESA -phase 2). These changes affect how you interact with real estate agents and brokerages.

Please read the Information guide published by RECO. Click here: [RECO Information Guide](#)

If you are represented by another Brokerage under a Tenant or Buyer Representation Agreement (Brokerage or Designated), please have your Designated Representative contact us on your behalf. This marketing material is not intended to solicit clients who are represented by another brokerage or Designated Representative. If you are not represented by another brokerage or another Designated Representative, and wish to hire brokerage representation, please contact us for details on our Landlord, Tenant, Advisory and Capital Markets Services.

This property is a Listing of The Behar Group Realty Inc. ("TBG") and the Designated Representative(s) named on these materials. The Landlord/Seller is our client to whom the Designated Representative(s) owes Fiduciary Duties.

Unless you are also a Client of TBG or the Designated Representative for this Listing (and you consent to Multiple Representation), then you are a Self Represented Party (SRP). It is important that you understand and acknowledge the risks and role as a SRP. Please read the RECO Information Guide, and before asking for assistance from the Designated Representative listed on this flyer be prepared to sign and acknowledge the RECO Information and Disclosure form for Self Represented Parties: [Click Here](#).

TBG strongly recommends that consumers retain the services of a qualified and experienced real estate agent.

For all transactions completed with TBG, you will be required to sign a Confirmation of Cooperation and Representation Agreement, whether you are a SRP or not, to ensure acknowledgement of representation disclosure.

Photo/Renderings Disclosure: Any photos used in these materials may have been digitally manipulated for illustrative purposes, and the actual property's appearance may differ; please verify details independently. Any property renderings used are artistic concepts only and may not reflect the final build of the project.

Errors and Omissions Disclosure: All information is from sources deemed reliable and is subject to errors and omissions which we believe to be correct and assume no responsibility. Changes in respect of price, rental, prior sale and withdrawal may be changed without notice. None of the information contained herein is intended to be construed as legal or tax or other professional advice. You should consult your legal counsel, accountant, planner/architect/engineer or other advisors as necessary on matters relating to these materials.