

VERADA

200 Kent Ave

Williamsburg

Prime Office
Opportunity



Located in one of Brooklyn's most dynamic neighborhoods, 200 Kent Avenue offers prime office space in a vibrant, mixed-use building anchored by Trader Joe's and Ever/Body. The property is surrounded by new developments, providing both an energetic atmosphere and convenient access to Williamsburg's retail and dining hotspots.

200 Kent Avenue offers 6,450 SF of premium office space on the 4th floor and 12,932 SF on the 5th floor, with high ceilings, large windows, and stunning views. Both floors provide flexible layouts suited to growing businesses and feature stunning views of the East River and the Manhattan skyline. Additionally, the 5th floor includes access to an 915 SF roof garden, perfect for breaks or company gatherings.

Situated just steps from the NYC Ferry and only a few blocks from the Bedford Ave L train station, 200 Kent Avenue boasts exceptional connectivity.

With immediate availability, this space is ideal for companies looking to capture the momentum of Williamsburg's growth and establish a presence in this thriving market.

[View Listing >](#)



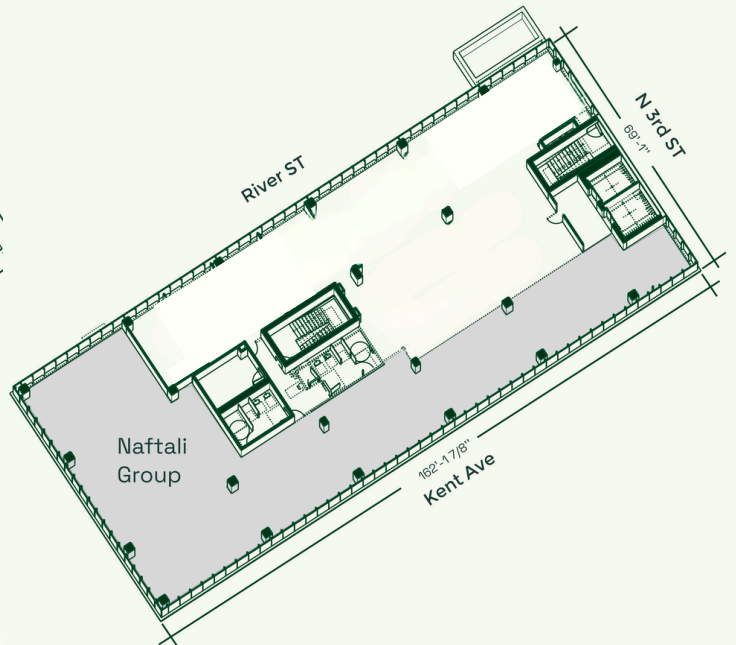
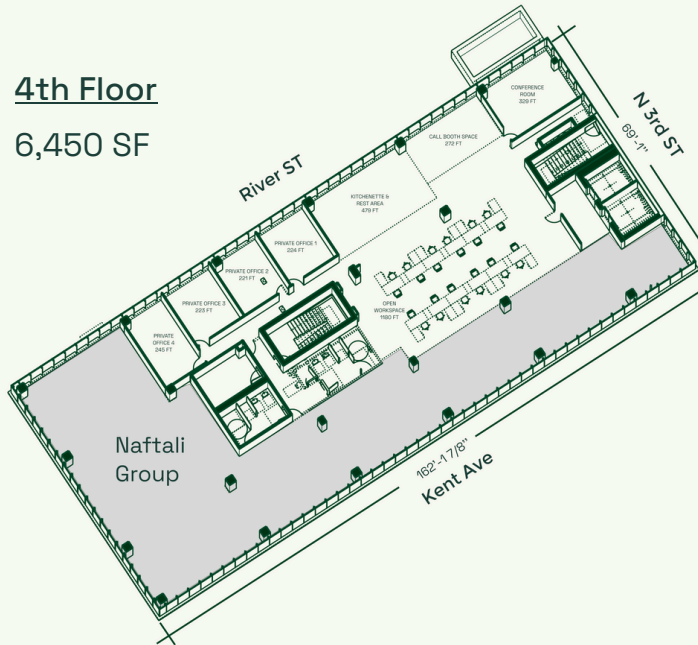
Total Square Footage	19,382 SF
4th Floor	6,450 SF
5th Floor	12,932 SF
5th Floor Roof Garden	915 SF
Ceiling Height	16 FT
Features	2 Bathrooms Floors to ceiling windows City Views
Market Concessions	Ownership open to build out
Divisible	Yes: Min- 2,000 SF

[View Listing >](#)

Available Floors

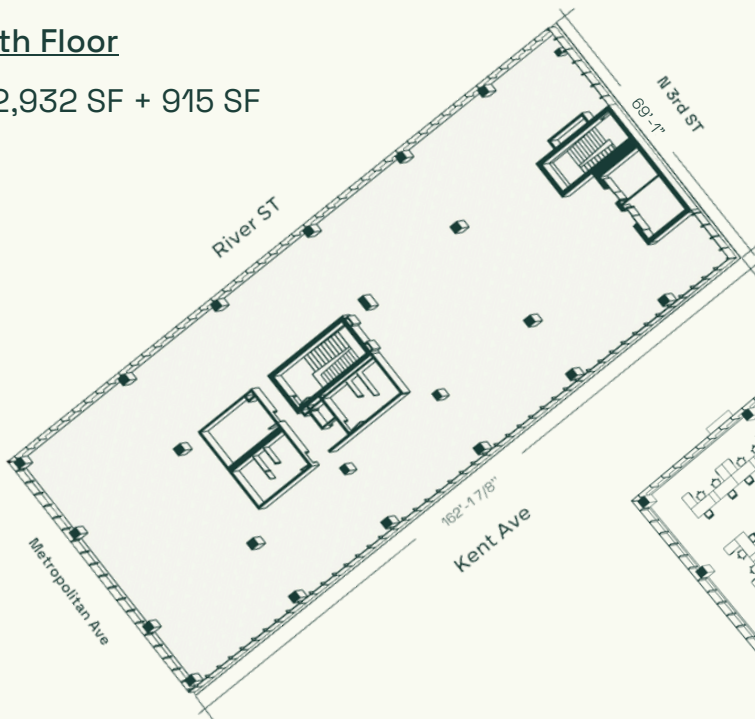
4th Floor

6,450 SF



5th Floor

12,932 SF + 915 SF



[View Listing >](#)



[View Listing >](#)



[View Listing >](#)



Neighborhood Description:

- Positioned between the thriving Metropolitan Avenue and North 3rd Street, offering easy access to Williamsburg's most popular retail, dining, and recreational spots.
- Steps from the NYC Ferry and just a few blocks from the Bedford Ave L train, providing quick access to Manhattan and beyond.
- Anchored by Trader Joe's and Ever/Body
- Surrounded by parks, including Bushwick Inlet Park and Domino Park, offering a lively mix of green space and waterfront views.

VERADA
veradaretail.com