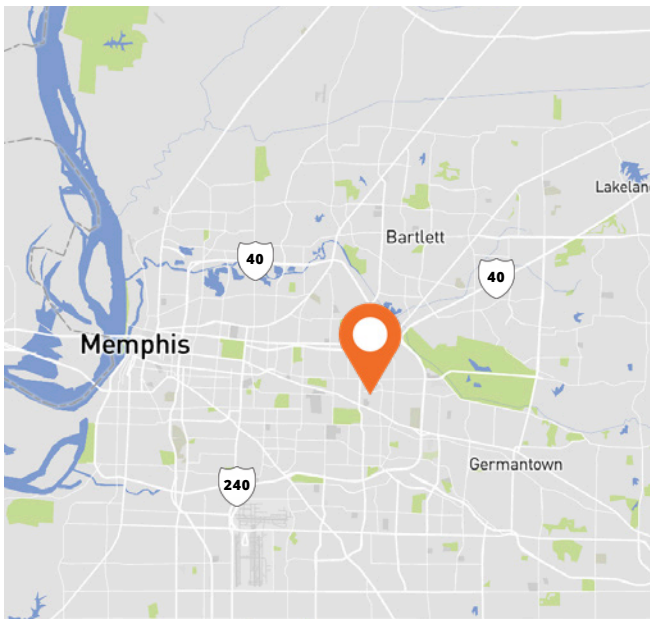




Retail & office space for sale or lease

Tournament Commons



Opportunity

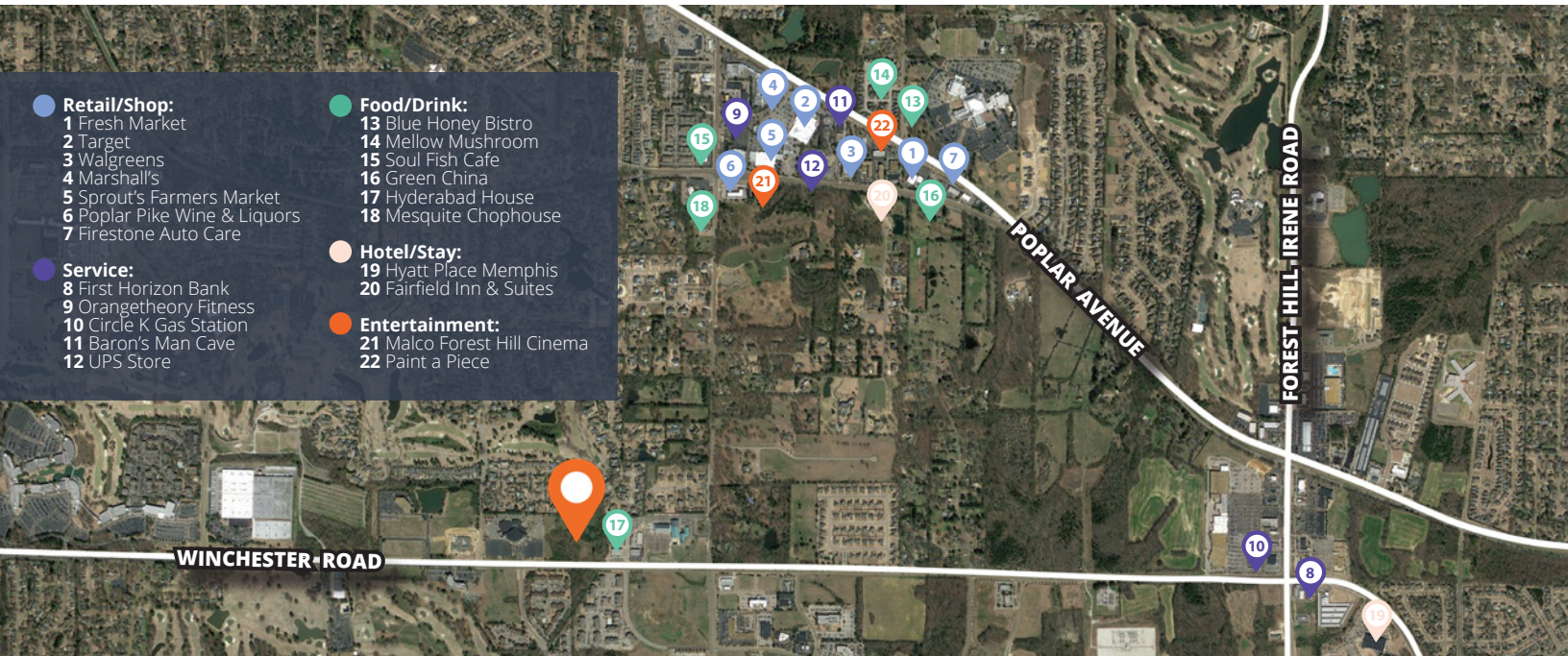
- 15,000-sf retail/office space available for sale or lease
- 1,500 - 7,500 sf available per building
- Close proximity to the FedEx World Headquarters with 3,200 employees, and TPC Southwind, home of the annual FESJC PGA Tournament
- Near the intersection of Winchester Road (27,193 VPD) and Forest Hill Irene Road (19,271 VPD)

| | 1 Mile | 3 Miles |
|-------------------|----------|----------|
| Population | 3,954 | 44,062 |
| Households | 1,543 | 16,769 |
| Average HH Income | \$96,959 | \$88,388 |

James H. McCraw, Vice President, Retail
D 901 410 5311
C 901 590 9997
 james.mccraw@avisonyoung.com

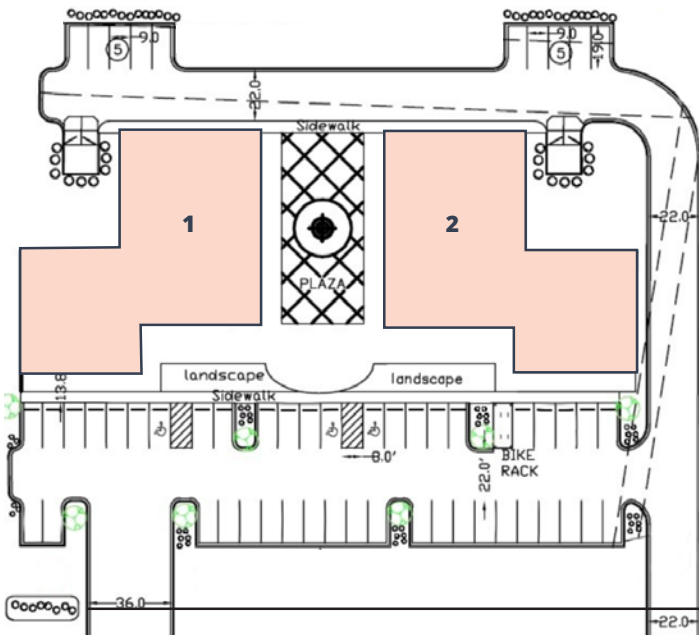
Jeff Higdon, SIOR, Vice President
D 901 410 1784
C 901 870 6740
 jeff.higdon@avisonyoung.com

5350 Poplar Avenue
Suite 205
 Memphis, TN 38119
 901 231 1400

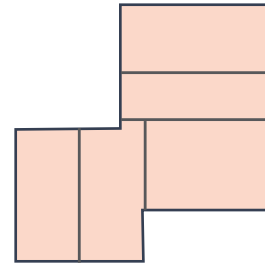


- Retail/Shop:**
 - 1 Fresh Market
 - 2 Target
 - 3 Walgreens
 - 4 Marshall's
 - 5 Sprout's Farmers Market
 - 6 Poplar Pike Wine & Liquors
 - 7 Firestone Auto Care
- Food/Drink:**
 - 13 Blue Honey Bistro
 - 14 Mellow Mushroom
 - 15 Soul Fish Cafe
 - 16 Green China
 - 17 Hyderabad House
 - 18 Mesquite Chophouse
- Service:**
 - 8 First Horizon Bank
 - 9 Orangetheory Fitness
 - 10 Circle K Gas Station
 - 11 Baron's Man Cave
 - 12 UPS Store
- Hotel/Stay:**
 - 19 Hyatt Place Memphis
 - 20 Fairfield Inn & Suites
- Entertainment:**
 - 21 Malco Forest Hill Cinema
 - 22 Paint a Piece

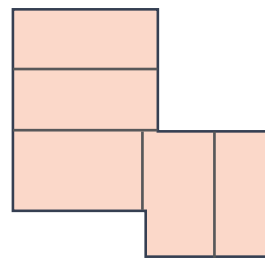
Site plan



Building 1 | 1,500 - 7,500 sf available



Building 2 | 1,500 - 7,500 sf available



James H. McCraw, Vice President, Retail
 D 901 410 5311
 C 901 590 9997
 james.mccraw@avisonyoung.com

Jeff Higdon, SIOR, Vice President
 D 901 410 1784
 C 901 870 6740
 jeff.higdon@avisonyoung.com