

1736 18TH STREET

FOR LEASE | GROUND FLOOR COMMERCIAL SPACE

TCP
TOUCHSTONE
COMMERCIAL PARTNERS



WWW.TCPRE.COM

ZACH HAUPERT zhaupert@tcpre.com
D 415.539.1121 | C 415.812.1219

MICHAEL SANBERG msanberg@tcpre.com
D 415.539.1103 | C 415.697.6088

TREVOR GUDIM trevor@tcpre.com
D 415.539.1122 | C 858.922.2632

1736 18TH STREET

PROPERTY SUMMARY

ADDRESS

1736 18th Street, San Francisco, CA 94107

AVAILABLE SPACE

+/- 2,280 Square Feet

RENTAL RATE

\$30 / Square Foot / Year, Industrial Gross

AVAILABLE

Immediately

BUILDING ATTRIBUTES

- + Four (4) Office / Meeting Rooms
- + Kitchenette
- + Two (2) Restrooms
- + +/- 153 Square Foot Mezzanine Space
- + Grade Level Roll-up Door w/ Curb Cut
- + Centrally Located in Heart of Sunny Potrero Hill
- + Within Walking Distance to Many Amenities

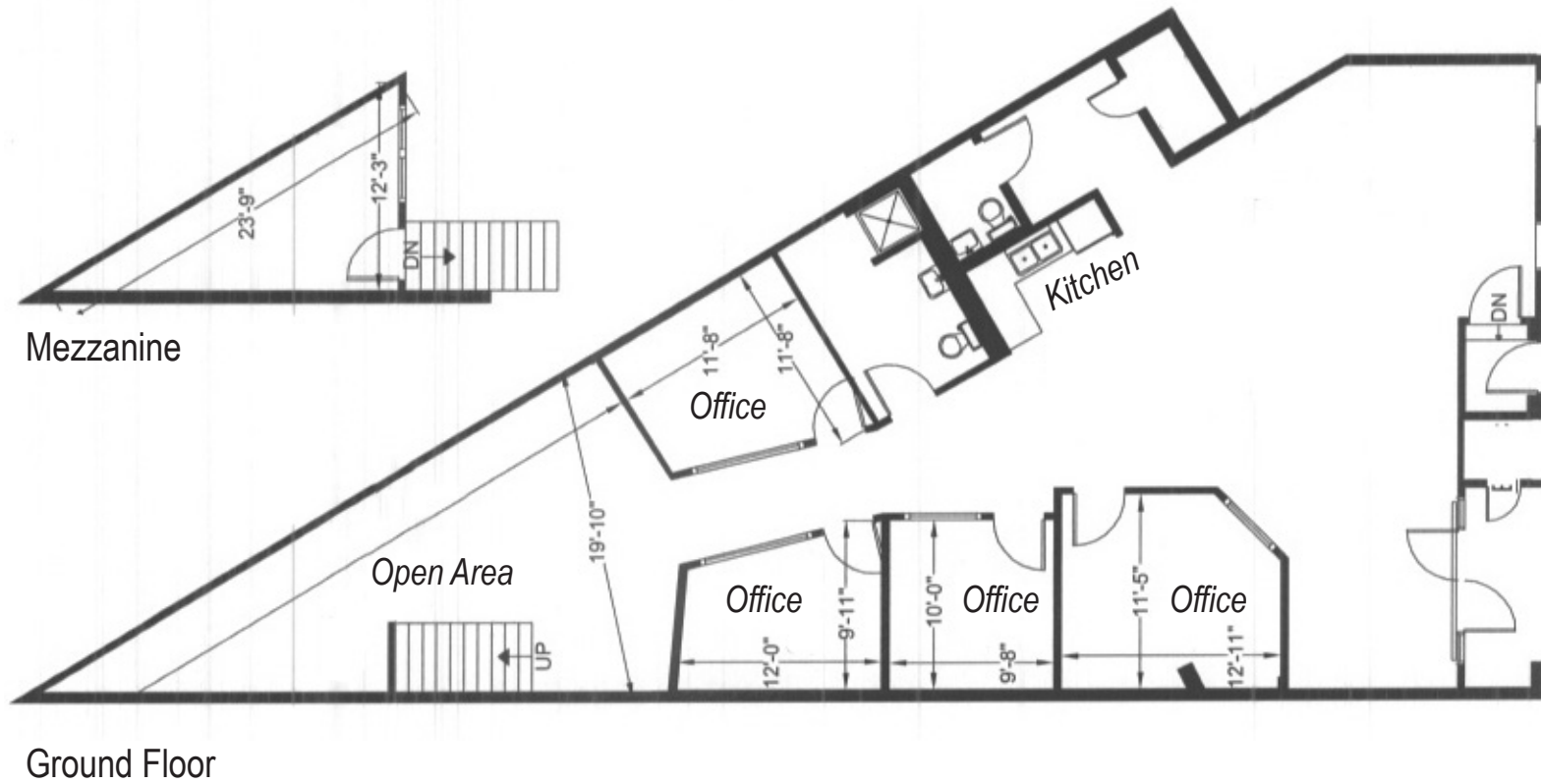


1736 18TH STREET

Floor Plans

Ground Floor +/- 2,280 Square Feet

Mezzanine +/- 153 Square Feet



1736 18TH STREET



LOCATION OVERVIEW

Desirable Potrero Hill location, walkable to various amenities and to surrounding neighborhoods.



11 MIN to Dogpatch
13 MIN to 3rd St Muni
25 MIN to 16th St. Bart



07 MIN to SOMA
16 MIN to Union Square
20 MIN to Financial District

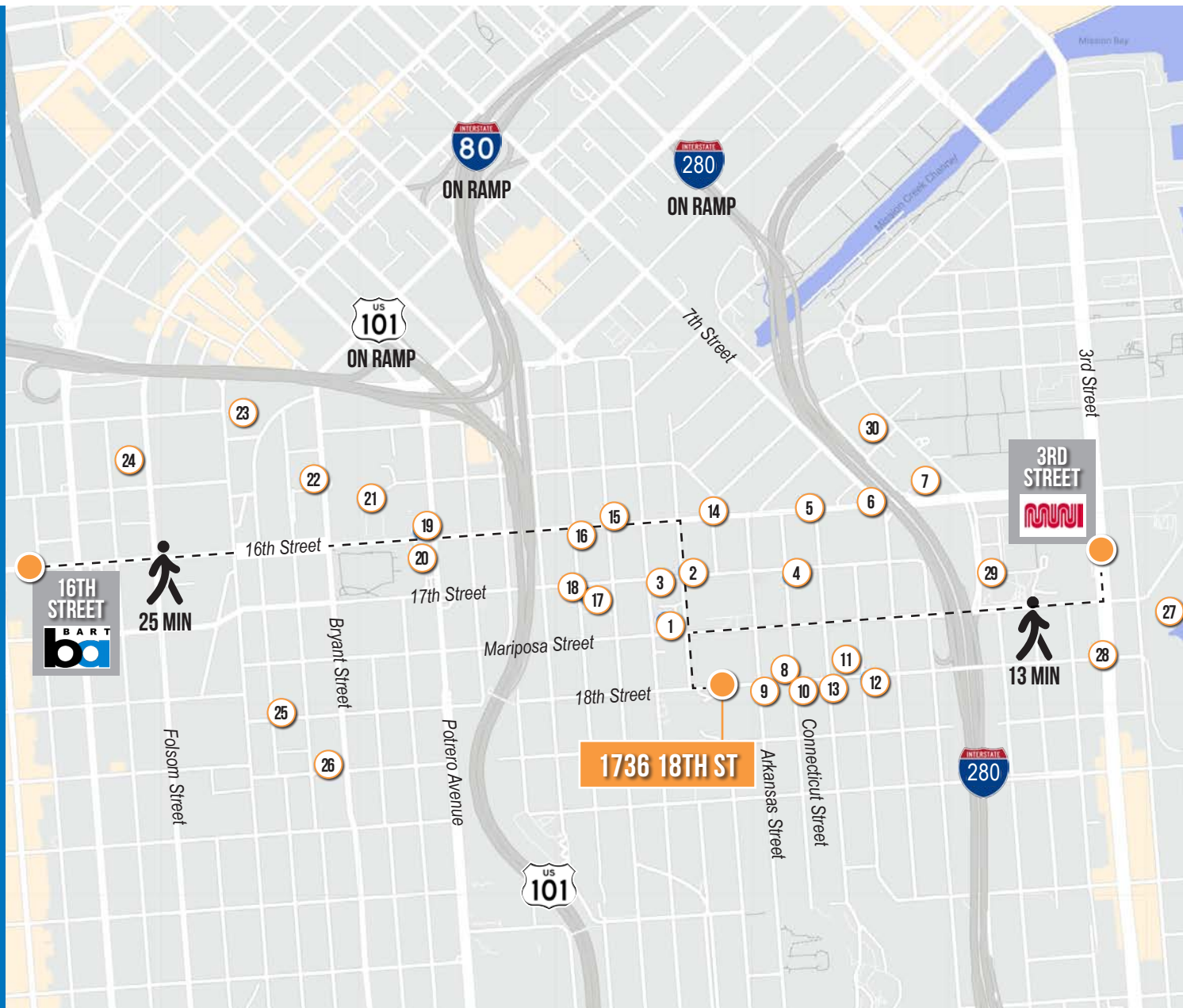


04 MIN to 101 On-Ramp
05 MIN to 280 On-Ramp
07 MIN to 80 On-Ramp

1736 18TH STREET

NEARBY AMENITIES

- 1..... Anchor Public Taps
- 2..... Zesty
- 3..... Philz Coffee
- 4..... Connecticut Yankee
- 5..... Boba Guys Potrero
- 6..... Truly Mediterranean
- 7..... Starbucks
- 8..... Sunflower Restaurant
- 9..... Chatz Roasting Company
- 10..... Mochica
- 11..... Umi
- 12..... Plow
- 13..... Parker Potrero
- 14..... Wolfe's Lunch
- 15..... Dos Piñas
- 16..... Starbucks
- 17..... Whole Foods Market
- 18..... Live Sushi Bar
- 19..... Smashburger
- 20..... McDonald's
- 21..... Safeway
- 22..... Sports Basement
- 23..... Best Buy
- 24..... Foods Co.
- 25..... Tartine Manufactory
- 26..... Universal Cafe
- 27..... The Ramp
- 28..... Moshi Moshi
- 29..... UCSF Medical Center
- 30..... Kaiser Permanente





1736 18TH
STREET



Corp. Lic. 01112906
www.tcpre.com

ZACH HAUPERT

D 415.539.1121 C 415.812.1219
zhaupert@tcpre.com DRE # 01822907

MICHAEL SANBERG

D 415.539.1103 C 415.697.6088
msanberg@tcpre.com DRE # 01930041

TREVOR GUDIM

D 415.539.1122 C 858.922.2632
trevor@tcpre.com DRE # 01979980

This document has been prepared by Touchstone Commercial Partners for advertising and general information only. Touchstone Commercial Partners makes no guarantees, representations or warranties of any kind, expressed or implied, regarding the information including, but not limited to, warranties of content, accuracy and reliability. Any interested party should undertake their own inquiries as to the accuracy of the information. Touchstone Commercial Partners excludes unequivocally all inferred or implied terms, conditions and warranties arising out of this document and excludes all liability for loss and damages arising there from. This publication is the copyrighted property of Touchstone Commercial Partners and/or its licensor(s). ©2022. All rights reserved.